

10632

Core drills with Morse taper shank

DIN 343
Z3
N
 120°
HSS
 900 N/mm²

Type

- Highly rounded heels
- Surface-treated for reduced tendency of the machined material to stick to the machining tool and improved chip removal.

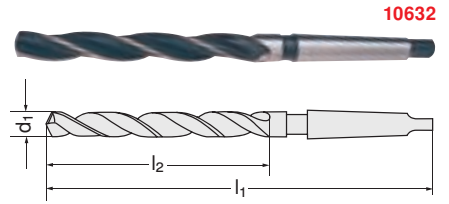
Quality

HSS ground for machining standard duty materials to 900 N/mm².

Advantage: For drilling out ovalised holes; holes that are not flush can be compensated.

Note:

The diameter to be core-drilled should be at least 3/4 of the core drilling Ø.



d ₁ h8 mm	l ₂ mm	l ₁ mm	MK	HSS 10632	...
7,80	75	156	1		101
8,00	75	156	1		102
8,80	81	162	1		103
9,80	87	168	1		104
10,00	87	168	1		105
10,75	94	175	1		106
11,75	101	182	1		107
12,00	101	182	1		108
12,75	101	182	1		109

d ₁ h8 mm	l ₂ mm	l ₁ mm	MK	HSS 10632	...
13,75	108	189	1		110
14,00	108	189	1		111
14,75	114	212	2		112
15,00	114	212	2		113
15,75	120	218	2		114
16,00	120	218	2		115
16,75	125	223	2		116
17,00	125	223	2		117
17,75	130	228	2		118

d ₁ h8 mm	l ₂ mm	l ₁ mm	MK	HSS 10632	...
18,00	130	228	2		119
18,70	135	233	2		120
19,70	140	238	2		121
20,00	140	238	2		122
20,70	145	243	2		123
21,70	150	248	2		124
22,00	150	248	2		125
25,00	160	281	3		127
30,00	175	296	3		129

Al<10%Si	Al>10%Si	Cu	St<520N	St<750N	St<900N	St<1100N	St<1200N	St<1400N	<45HRC	<55HRC	<60HRC	<67HRC	VA-steel<900N	VA-steel>900N	NTI-alloys	GG(G)	plastics
25-40	10-30	10-30	26-30	25-28	20-25	15-20	10-15	5-10	-	-	-	-	4-10	3-6	-	10-18	-

Info

Are you familiar with the Multiplex drilling system from HARTNER?

HARTNER

The tool system with interior-cooled holders in different lengths, as well as interchangeable cutting tips, consequently

- No re-sharpening
- Always the original grind
- Length always remains constant

Each holder drills with tips in different diameters and cutting materials, such as coated HSS-E PM and solid carbide – depending on the material to be machined. Drill range von Ø 9,7 to 65 mm – often up to 7 x d. This tool is not suitable for drilling out pre-cast or pre-drilled holes.

What you previously drilled conventionally, you now drill with the MULTIPLEX DRILLING SYSTEM

- Faster
- More accurately
- Better
- Cheaper

The MULTIPLEX Drilling System offers many advantages:

- No re-sharpening costs
- The coating advantage remains fully intact
- High machining performance and optimal service life thanks to interior cooling
- Constant tool length
- Pre-adjustment times and readjustment for NC machines are dispensed with
- Reduced stock keeping costs

further development as a special tool for the work steps

- Drilling
- Spot-facing
- Planing
- Chamfering
- Hollowing-out
- Countersinking

The MULTIPLEX Drilling System helps to reduce your costs!

10649 - 10674 Multiplex exchangeable blades - twist drills

Type

- With internal coolant feed.
- With straight shank, right-hand cut.
- Up to drilling Ø 35 mm hardened and nickel-plated.
- Above nickel-plated. Without cutting tip.

Point angle:

- To Ø 25,4 = 135°
- Over Ø 25,4 = 132°

Web-thinned:

Special shape with short web-thinned chisel edge.

Use

For drilling steel and cast steel, alloyed and unalloyed, **with a strength of up to approx. 1100 N/mm²**, grey cast iron, malleable cast iron, spheroidal cast iron, sintered iron, German silver, bronze, brass.

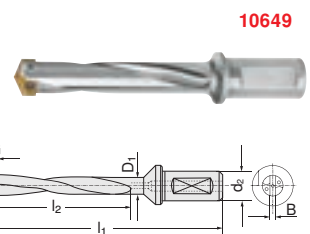
10649

Holder with straight shank 3 x D



HARTNER

For drilling Ø D mm	l ₂ mm	l ₁ mm	D ₁ mm	d ₂ mm	B mm	Torx screws G	HSS 10649	...
9,70-11,70	50	107	9,5	20	2,5	M2,0 x 4		201
11,71-13,40	53	109	11,5	20	2,5	M2,0 x 4		202
13,41-16,40	60	116	13,0	20	3,5	M2,5 x 5		203
16,41-18,90	65	118	16,0	20	3,5	M2,5 x 7		204
18,91-22,40	73	124	18,5	20	4,0	M3,0 x 6		205
22,41-25,40	78	127	22,0	20	4,0	M3,0 x 8		206
25,41-29,00	105	178	24,0	32	5,0	M3,5 x 10		207
29,01-35,00	108	178	28,0	32	5,0	M3,5 x 10		208
35,01-45,00	152	223	34,0	32	7,0	M4,0 x 15		209
45,01-55,00	152	233	44,0	40	7,0	M4,0 x 15		210
55,01-65,00	152	233	54,0	40	7,0	M4,0 x 15		211



Continuation ▶

Multiplex holder

10650

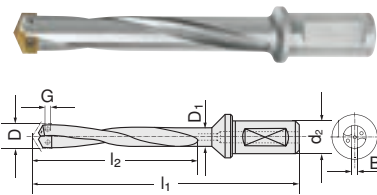
Holder with straight shank 5 x D



HARTNER



For drilling Ø D mm	l ₂ mm	l ₁ mm	D ₁ mm	d ₂ mm	B mm	Torx screws G	10650	...
9,70-11,70	83	140	9,5	20	2,5	M2,0 x 4	201	201
11,71-13,40	94	150	11,5	20	2,5	M2,0 x 4	202	202
13,41-16,40	104	160	13,0	20	3,5	M2,5 x 5	203	203
16,41-18,90	117	170	16,0	20	3,5	M2,5 x 7	204	204
18,91-22,40	129	180	18,5	20	4,0	M3,0 x 6	205	205
22,41-25,40	131	180	22,0	20	4,0	M3,0 x 8	206	206
25,41-29,00	166	240	24,0	32	5,0	M3,5 x 10	207	207
29,01-35,00	170	240	28,0	32	5,0	M3,5 x 10	208	208
35,01-45,00	210	280	34,0	32	7,0	M4,0 x 15	209	209
45,01-55,00	210	290	44,0	40	7,0	M4,0 x 15	210	210
55,01-65,00	210	290	54,0	40	7,0	M4,0 x 15	211	211



10650

10651

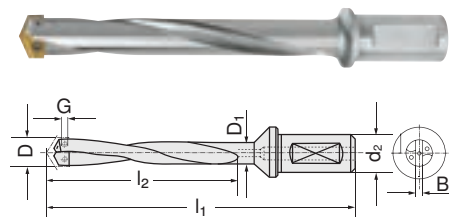
Holder with straight shank 7 x D



HARTNER



For drilling Ø D mm	l ₂ mm	l ₁ mm	D ₁ mm	d ₂ mm	B mm	Torx screws G	10651	...
9,70-11,70	123	180	9,5	20	2,5	M2,0 x 4	201	201
11,71-13,40	134	190	11,5	20	2,5	M2,0 x 4	202	202
13,41-16,40	155	210	13,0	20	3,5	M2,5 x 5	203	203
16,41-18,90	168	220	16,0	20	3,5	M2,5 x 7	204	204
18,91-22,40	199	250	18,5	20	4,0	M3,0 x 6	205	205
22,41-25,40	201	250	22,0	20	4,0	M3,0 x 8	206	206
25,41-29,00	246	320	24,0	32	5,0	M3,5 x 10	207	207
29,01-35,00	250	320	28,0	32	5,0	M3,5 x 10	208	208
35,01-45,00	310	380	34,0	32	7,0	M4,0 x 15	209	209
45,01-55,00	310	390	44,0	40	7,0	M4,0 x 15	210	210
55,01-65,00	310	390	54,0	40	7,0	M4,0 x 15	211	211



10651

10654 - 10657

Exchangeable Blades for Multiplex System

Type

- Facet ground
- Right-hand cut

10654

Quality

HSS-E-PM/TiN for steel to 1200 N/mm², cast iron, aluminium. With chip divider groove for short chips.



10654

10655

Quality

HSS-E-PM/fire-coating for longer service life in steel to 1200 N/mm², cast iron, aluminium, brass, bronze.

With chip divider groove for short chips.



10655

10657

Quality

Solid carbide/fire-coating for even longer service life and performance even in steel to 48 HRC and hardened cast iron.

With land, without chip divider groove.



10657

Ø mm	B mm	HSS-E-PM/TiN		HSS-E-PM/fire		H 22/fire	
		10654	...	10655	...	10657	...
10,00	2,5	602		602		602	
10,20	2,5	603				603	
10,50	2,5			604		604	
11,00	2,5	607		607		607	
12,00	2,5	615		615		615	
12,50	2,5	621		621		621	
12,75	2,5	624				624	
13,00	2,5	625		625		625	
13,50	3,5	628		628		628	
13,75	3,5	629				629	
14,00	3,5	630		630		630	
14,25	3,5	631		631			
14,50	3,5	633		633		633	

Ø mm	B mm	HSS-E-PM/TiN		HSS-E-PM/fire		H 22/fire	
		10654	...	10655	...	10657	...
14,75	3,5			634		634	
15,00	3,5	635				635	
15,25	3,5	636					
15,50	3,5	637				637	
15,75	3,5	638		638		638	
16,00	3,5	639				639	
16,25	3,5						640
16,50	3,5	641				641	
17,00	3,5	643		643		643	
17,50	3,5	645				645	
17,75	3,5	646					646
18,00	3,5	647				647	
18,25	3,5	648				648	

Continuation



10654 - 10657 Exchangeable Blades for Multiplex System

Continuation ▶

		HSS-E-PM/TiN				HSS-E-PM/fire				H 22/fire						HSS-E-PM/TiN				HSS-E-PM/fire				H 22/fire			
Ø	B	10654				10655				10657				Ø	B	10654				10655				10657			
mm	mm													mm	mm												
18,50	3,5													23,00	4,0												
18,75	3,5	649				649				649				23,50	4,0	670				670				670			
19,00	4,0													24,00	4,0												
19,50	4,0	650				650				650				24,25	4,0	672				672				672			
19,75	4,0													24,50	4,0												
20,00	4,0	651				651				651				25,00	4,0	675				675				675			
20,25	4,0													26,00	5,0	677				677				677			
20,50	4,0	654				654				654				27,00	5,0	680				680				680			
21,00	4,0													28,00	5,0	676				676				676			
21,25	4,0	655				655				655				29,00	5,0	677				677				677			
21,50	4,0													30,00	5,0	678				678				678			
21,75	4,0	656				656				656				33,00	5,0	679				679				679			
22,00	4,0													34,00	5,0	680				680				680			
22,50	4,0	657				657				657				35,00	5,0	681				681				681			
		658				658				658																	
		659				659				659																	
		660				660				660																	
		661				661				661																	
		662				662				662																	
		663				663				663																	
		664				664				664																	
		665				665				665																	
		666				666				666																	
		667				667				667																	
		668				668				668																	

Al<10%Si	Al>10%Si	Cu	St<520N	St<750N	St<900N	St<1100N	St<1200N	St<1400N	<45HRC	<55HRC	<60HRC	<67HRC	VA-steel<900N	VA-steel>900N	Ti-alloys	GG(G)	plastics
10654	80-85	65-70	40-45	35-40	30-35	25-30	22-25	20-22	-	-	-	-	15-20	-	-	28-35	-
10655	80-85	65-70	40-50	42-48	40-45	35-40	25-28	18-25	-	-	-	-	17-23	-	-	33-40	-
10657	140-160	130-150	70-80	90-100	80-85	75-80	70-75	55-65	40-45	-	-	-	30-45	-	-	70-90	-

10672 Exchangeable Blades for Multiplex System



HARTNER

Quality
HSS-E-PM/TiAlN for materials to 1200 N/mm².

Type
- Facet ground
- Right-hand cut



		HSS-E-PM/TiAlN				HSS-E-PM/TiAlN				HSS-E-PM/TiAlN				HSS-E-PM/TiAlN			
Ø	B	10672				10672				10672				10672			
mm	mm																
25	5																
25,5	5	600				611				622				633			
26	5																
26,5	5	601				612				623				634			
27	5																
28	5	602				613				624				635			
29	5																
29,5	5	603				614				625				636			
30	5																
31	5	604				615				626				637			
32	5																
		605				616				627				638			
		606				617				628				639			
		607				618				629				640			
		608				619				630				641			
		609				620				631							
		610				621				632							

Al<10%Si	Al>10%Si	Cu	St<520N	St<750N	St<900N	St<1100N	St<1200N	St<1400N	<45HRC	<55HRC	<60HRC	<67HRC	VA-steel<900N	VA-steel>900N	Ti-alloys	GG(G)	plastics
75-80	65-75	60-65	50-55	45-50	40-45	35-40	30-35	-	-	-	-	-	25-28	-	-	40-50	-

10674 TORX® clamp screws

HARTNER

Use
For Multiplex exchangeable blade twist drills
cat.-no. 10649 ff.

Type
Pack = 5 pcs.



Designation	For drilling mm	TORX size	10674	...	Designation	For drilling mm	TORX size	10674	...
M 2,0 x 4	10 - 13	T 6		201	M 3,0 x 8	> 22 - 25	T 9		205
M 2,5 x 5	> 13 - 16	T 7		202	M 3,5 x 10	> 25 - 35	T 15		206
M 2,5 x 7	> 16 - 18	T 7		203	M 4,0 x 15	> 35 - 65	T 20		207
M 3,0 x 6	> 18 - 22	T 9		204					



Type

- Right-hand cut
- With cylindrical tool receptacle
- With internal coolant feed

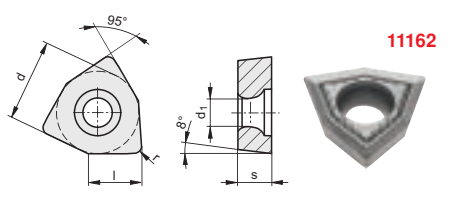
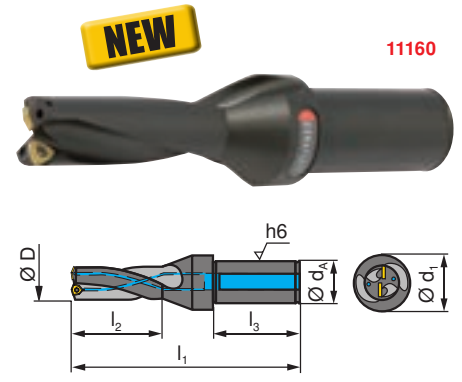
Scope of supply:

- Body with clamping screws
- Without indexable inserts

Use

Rotating or standing in all stable machine tools.

Ø D mm	Designation	Ø d _A mm	Ø d ₁ mm	l ₁ mm	l ₂ mm	l ₃ mm	Indexable inserts	11160	...
14	3D.140.R.02	25	32	128	44	74	WC.. / XO.. 02..	101	
15	3D.150.R.02	25	32	131	47	77	WC.. / XO.. 02..	102	
16	3D.160.R.02	25	32	134	50	80	WC.. / XO.. 02..	103	
17	3D.170.R.02	25	32	137	53	83	WC.. / XO.. 02..	104	
18	3D.180.R.03	25	32	140	56	86	WC.. / XO.. 03..	105	
19	3D.190.R.03	25	32	143	59	89	WC.. / XO.. 03..	106	
20	3D.200.R.03	25	32	146	62	92	WC.. / XO.. 03..	107	
21	3D.210.R.03	25	32	149	65	95	WC.. / XO.. 03..	108	
22	3D.220.R.03	25	32	152	68	98	WC.. / XO.. 03..	109	
23	3D.230.R.03	25	32	155	71	101	WC.. / XO.. 03..	110	
24	3D.240.R.05	25	32	158	74	104	WC.. / XO.. 05..	111	
25	3D.250.R.05	25	32	161	77	107	WC.. / XO.. 05..	112	
26	3D.260.R.05	25	32	164	80	110	WC.. / XO.. 05..	113	
27	3D.270.R.05	25	32	167	83	113	WC.. / XO.. 05..	114	
28	3D.280.R.05	25	32	170	86	116	WC.. / XO.. 05..	115	
29	3D.290.R.05	25	32	173	89	119	WC.. / XO.. 05..	116	
30	3D.300.R.06	32	49	180	92	122	WC.. / XO.. 06..	117	
31	3D.310.R.06	32	49	183	95	125	WC.. / XO.. 06..	118	
32	3D.320.R.06	32	49	186	98	128	WC.. / XO.. 06..	119	
33	3D.330.R.06	32	49	189	101	131	WC.. / XO.. 06..	120	
34	3D.340.R.06	32	49	192	104	134	WC.. / XO.. 06..	121	
35	3D.350.R.06	32	49	195	107	137	WC.. / XO.. 06..	122	
36	3D.360.R.06	32	49	198	110	140	WC.. / XO.. 06..	123	
37	3D.370.R.06	32	49	201	113	143	WC.. / XO.. 06..	124	
38	3D.380.R.07	32	49	204	116	146	WC.. / XO.. 07..	125	
39	3D.390.R.07	32	49	207	119	149	WC.. / XO.. 07..	126	
40	3D.400.R.07	32	49	210	122	152	WC.. / XO.. 07..	127	
41	3D.410.R.07	32	49	213	125	155	WC.. / XO.. 07..	128	
42	3D.420.R.07	32	49	216	128	158	WC.. / XO.. 07..	129	
43	3D.430.R.07	32	49	219	131	161	WC.. / XO.. 07..	130	
44	3D.440.R.07	32	49	222	134	164	WC.. / XO.. 07..	131	
45	3D.450.R.07	40	59	240	137	172	WC.. / XO.. 07..	132	
46	3D.460.R.07	40	59	243	140	175	WC.. / XO.. 07..	133	
47	3D.470.R.07	40	59	246	143	178	WC.. / XO.. 07..	134	
48	3D.480.R.07	40	59	249	146	181	WC.. / XO.. 07..	135	
49	3D.490.R.07	40	59	252	149	184	WC.. / XO.. 07..	136	
50	3D.500.R.07	40	59	255	152	187	WC.. / XO.. 07..	137	
51	3D.510.R.07	40	59	258	155	190	WC.. / XO.. 07..	138	
52	3D.520.R.07	40	59	261	158	193	WC.. / XO.. 07..	139	
53	3D.530.R.07	40	59	264	161	196	WC.. / XO.. 07..	140	



M CTCP435 Coated 11162 ...
P M K CTPP430 Coated 11162 ...

Use

Carbide type
Coating

Designation	d mm	l mm	s mm	r mm	d ₁ mm		11162	...	11162	...
XOMT 020204SN	5,50	3,39	2,30	0,40	2,25	10 pcs.	101		201	
XOMT 030204SN	6,00	3,97	2,50	0,40	2,50	10 pcs.	102		202	
XOMT 050304SN	8,00	5,29	3,00	0,40	2,80	10 pcs.	103		203	
XOMT 060304SN	10,00	6,62	3,00	0,40	4,00	10 pcs.	104		204	
XOMT 070304SN	12,00	3,97	3,80	0,40	4,40	10 pcs.	105		205	

Spare parts

for indexable inserts	Clamping screws	Wrench	11162	...	11162	...
WC.. / XO.. 02	M 2,0 x 4,8	T 6	101		202	
WC.. / XO.. 03	M 2,2 x 5,0	T 7	102		203	
WC.. / XO.. 05	M 2,5 x 6,0	T 8	103		204	
WC.. / XO.. 06/07	M 3,5 x 11,0	T 15	104		207	

Al<10%Si	Al>10%Si	Cu	St<520N	St<750N	St<900N	St<1100N	St<1200N	St<1400N	<45HRC	<55HRC	<60HRC	<67HRC	VA-steel<900N	VA-steel>900N	Ti alloys	GG(G)	Plastics
150-500	150-300	150-300	180-300	160-280	140-250	130-220	100-200	100-200	-	-	-	-	100-160	80-150	40-100	80-200	-

Indexable Insert Drills



11165 - 11168 Indexable Insert Drills MaxiDrill 900



11165 - 11166

Type

- Stable design
- Circumference cutter and centre cutter same indexable insert
- Long service life through hard&tough coating
- Optimal chip transport

Scope of supply:

- Body with clamping screws
- **Without** indexable inserts

11165

Use

For boring depths up to 3 x D.

11166

Use

For bore depths up to 5 x D.

11168

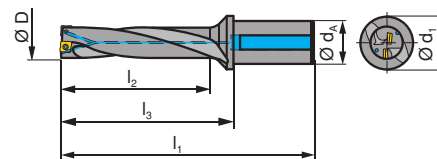
Indexable Inserts

Type

- 4 effective cutting edges per indexable insert
- Indexable inserts - broadband type



11165



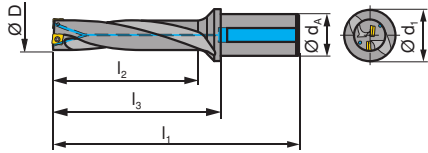
Ø D mm	Designation	Ø d _A mm	Ø d ₁ mm	l ₁ mm	l ₂ mm	l ₃ mm	Indexable inserts	3 x D 11165	...
14	C900.3D.140.R.04	20	30	109	42	59	SONT 04..		101
15	C900.3D.150.R.04	20	30	112	45	62	SONT 04..		102
16	C900.3D.160.R.05	20	30	115	48	65	SONT 05..		103
17	C900.3D.170.R.05	20	30	118	51	68	SONT 05..		104
18	C900.3D.180.R.06	25	32	128	54	72	SONT 06..		105
19	C900.3D.190.R.06	25	32	131	57	75	SONT 06..		106
20	C900.3D.200.R.06	25	32	134	60	78	SONT 06..		107
21	C900.3D.210.R.07	25	32	138	63	82	SONT 07..		108
22	C900.3D.220.R.07	25	32	141	66	85	SONT 07..		109
23	C900.3D.230.R.07	25	32	144	69	88	SONT 07..		110
24	C900.3D.240.R.08	32	40	155	72	95	SONT 08..		111
25	C900.3D.250.R.08	32	40	158	75	98	SONT 08..		112
26	C900.3D.260.R.08	32	40	161	78	101	SONT 08..		113
27	C900.3D.270.R.08	32	40	164	81	104	SONT 08..		114
28	C900.3D.280.R.09	32	40	167	84	107	SONT 09..		115
29	C900.3D.290.R.09	32	40	170	87	110	SONT 09..		116
30	C900.3D.300.R.09	32	40	173	90	113	SONT 09..		117
31	C900.3D.310.R.09	32	40	176	93	116	SONT 09..		118
32	C900.3D.320.R.09	32	40	179	96	119	SONT 09..		119
33	C900.3D.330.R.10	40	50	193	99	125	SONT 10..		120
34	C900.3D.340.R.10	40	50	196	102	128	SONT 10..		121
35	C900.3D.350.R.10	40	50	199	105	131	SONT 10..		122
36	C900.3D.360.R.10	40	50	202	108	134	SONT 10..		123
37	C900.3D.370.R.12	40	56	211	111	141	SONT 12..		124
38	C900.3D.380.R.12	40	56	214	114	144	SONT 12..		125
39	C900.3D.390.R.12	40	56	217	117	147	SONT 12..		126
40	C900.3D.400.R.12	40	56	220	120	150	SONT 12..		127
41	C900.3D.410.R.12	40	56	223	123	153	SONT 12..		128
42	C900.3D.420.R.13	40	60	229	126	159	SONT 13..		129
43	C900.3D.430.R.13	40	60	232	129	162	SONT 13..		130
44	C900.3D.440.R.13	40	60	235	132	165	SONT 13..		131
45	C900.3D.450.R.13	40	60	238	135	168	SONT 13..		132
46	C900.3D.460.R.13	40	60	241	138	171	SONT 13..		133
47	C900.3D.470.R.15	40	60	245	141	175	SONT 15..		134
48	C900.3D.480.R.15	40	60	248	144	178	SONT 15..		135
49	C900.3D.490.R.15	40	60	251	147	181	SONT 15..		136
50	C900.3D.500.R.15	40	60	254	150	184	SONT 15..		137
51	C900.3D.510.R.15	40	60	257	153	187	SONT 15..		138
52	C900.3D.520.R.15	40	60	260	156	190	SONT 15..		139
53	C900.3D.530.R.15	40	60	263	159	193	SONT 15..		140
54	C900.3D.540.R.15	40	60	266	162	196	SONT 15..		141
55	C900.3D.550.R.17	40	60	270	165	200	SONT 17..		142
56	C900.3D.560.R.17	40	60	273	168	203	SONT 17..		143
57	C900.3D.570.R.17	40	60	276	171	206	SONT 17..		144
58	C900.3D.580.R.17	40	60	279	174	209	SONT 17..		145
59	C900.3D.590.R.17	40	60	282	177	212	SONT 17..		146
60	C900.3D.600.R.17	40	62	285	180	215	SONT 17..		147
61	C900.3D.610.R.17	40	62	288	183	218	SONT 17..		148
62	C900.3D.620.R.17	40	64	291	186	221	SONT 17..		149

Continuation ▶





Continuation ▶



NEW

11166



5 x D

Ø D mm	Designation	Ø d _A mm	Ø d ₁ mm	l ₁ mm	l ₂ mm	l ₃ mm	Indexable inserts	11166	...
14	C900.5D.140.R.04	20	30	137	70	87	SONT 04..		101
15	C900.5D.150.R.04	20	30	142	75	92	SONT 04..		102
16	C900.5D.160.R.05	20	30	147	80	97	SONT 05..		103
17	C900.5D.170.R.05	20	30	152	85	102	SONT 05..		104
18	C900.5D.180.R.06	25	32	164	90	108	SONT 06..		105
19	C900.5D.190.R.06	25	32	169	95	113	SONT 06..		106
20	C900.5D.200.R.06	25	32	174	100	118	SONT 06..		107
21	C900.5D.210.R.07	25	32	179	105	124	SONT 07..		108
22	C900.5D.220.R.07	25	32	184	110	128	SONT 07..		109
23	C900.5D.230.R.07	25	32	189	115	133	SONT 07..		110
24	C900.5D.240.R.08	32	40	203	120	143	SONT 08..		111
25	C900.5D.250.R.08	32	40	208	125	148	SONT 08..		112
26	C900.5D.260.R.08	32	40	212	130	152	SONT 08..		113
27	C900.5D.270.R.08	32	40	217	135	157	SONT 08..		114
28	C900.5D.280.R.09	32	40	221	140	161	SONT 09..		115
29	C900.5D.290.R.09	32	40	226	145	166	SONT 09..		116
30	C900.5D.300.R.09	32	40	230	150	170	SONT 09..		117
31	C900.5D.310.R.09	32	40	235	155	175	SONT 09..		118
32	C900.5D.320.R.09	32	40	239	160	179	SONT 09..		119
33	C900.5D.330.R.10	40	50	259	165	191	SONT 10..		120
34	C900.5D.340.R.10	40	50	264	170	196	SONT 10..		121
35	C900.5D.350.R.10	40	50	269	175	201	SONT 10..		122
36	C900.5D.360.R.10	40	50	274	180	206	SONT 10..		123
37	C900.5D.370.R.12	40	56	285	185	215	SONT 12..		124
38	C900.5D.380.R.12	40	56	290	190	220	SONT 12..		125
39	C900.5D.390.R.12	40	56	295	195	225	SONT 12..		126
40	C900.5D.400.R.12	40	56	300	200	230	SONT 12..		127
41	C900.5D.410.R.12	40	56	305	205	235	SONT 12..		128

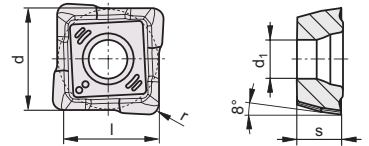
Indexable Inserts and Spare Parts

Use
Carbide type
Coating

NPMKS
CTPP430
coated

11168

Designation	d mm	l mm	s mm	r mm	d ₁ mm		11168	...
SONT 042105ER-M30	4,6	4,2	2,1	0,5	2,25	10 pcs.		101
SONT 052306ER-M30	5,3	4,8	2,3	0,6	2,25	10 pcs.		102
SONT 062506ER-M30	5,9	5,5	2,5	0,6	2,5	10 pcs.		103
SONT 072907ER-M30	6,5	6,1	2,9	0,7	2,5	10 pcs.		104
SONT 083308ER-M30	7,7	7,3	3,3	0,8	2,9	10 pcs.		105
SONT 093808ER-M30	8,9	8,5	3,8	0,8	3,5	10 pcs.		106
SONT 104408ER-M30	10,1	9,6	4,4	0,8	4,1	10 pcs.		107
SONT 124810ER-M30	11,6	11,0	4,8	1,0	4,1	10 pcs.		108
SONT 135012ER-M30	13,0	12,2	5,0	1,2	5,3	10 pcs.		109
SONT 155312ER-M30	15,2	14,4	5,3	1,2	5,3	10 pcs.		110
SONT 175612ER-M30	17,5	16,7	5,6	1,2	5,3	10 pcs.		111



Spare parts

Clamping screw

Wrench

for indexable inserts	Clamping screws	Wrench	17999	...	51932	...
SONT 04/05..	M 2,0 x 4,0 IP 6		105		402	
SONT 06/07..	M 2,2 x 5,0 IP 7		106		403	
SONT 08..	M 2,5 x 6,0 IP 8		107		404	
SONT 09..	M 3,0 x 7,0 IP 9		108		405	
SONT 10/12..	M 3,5 x 8,6 IP 15		109		407	
SONT 13/15/17..	M 4,5 x 10,5 IP 20		110		408	

Al<10%Si	Al>10%Si	Cu	St<520N	St<750N	St<900N	St<1100N	St<1200N	St<1400N	<45HRC	<55HRC	<60HRC	<67HRC	VA-steel<900N	VA-steel>900N	Ti alloys	GG(G)	Plastics
150-500	150-300	150-300	180-300	160-280	140-250	130-220	100-200	100-200	-	-	-	-	100-160	80-150	40-100	80-200	-

Drilling and Turning Tools

Drilling Tools

11170 - 11172 Drilling and turning tool EcoCut Mini



NEW

11170 - 11171



Type
 - Single-flute tool for drilling and turning
 - New carbide type with improved ductility and temperature stability

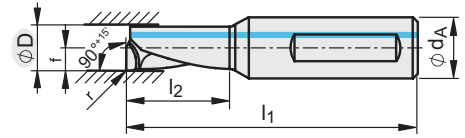
Quality
 Universal finest grit CTPP435.

Note:
 Use only with holder cat.-no. 11172.

11170
Use
 For boring depths up to 2,25 x D.

11171
Use
 For boring depths up to 4 x D.

11172
Holder for accommodating the EcoCut Mini

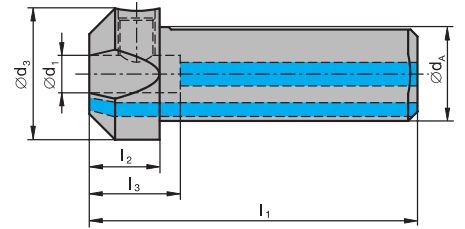


2,25 x D							Right-hand		Left-hand	
Ø D	Designation	Ø d _A	l ₁	l ₂	f	r	11170	...	11170	...
mm		mm	mm	mm	mm	mm				
4	ECM 04R/L-2.25D	6	35	9,00	2,0	0,2		101		201
5	ECM 05R/L-2.25D	6	37	11,25	2,5	0,2		102		202
6	ECM 06R/L-2.25D	8	38	13,50	3,0	0,2		103		203
7	ECM 07R/L-2.25D	8	42	15,75	3,5	0,2		104		204
8	ECM 08R/L-2.25D	8	45	18,00	4,0	0,2		105		205

4 x D							Right-hand		Left-hand	
Ø D	Designation	Ø d _A	l ₁	l ₂	f	r	11171	...	11171	...
mm		mm	mm	mm	mm	mm				
4	ECM 04R/L-4.00D	6	41	16	2,0	0,2		101		201
5	ECM 05R/L-4.00D	6	45	20	2,5	0,2		102		202
6	ECM 06R/L-4.00D	8	49	24	3,0	0,2		103		203
7	ECM 07R/L-4.00D	8	53	28	3,5	0,2		104		204
8	ECM 08R/L-4.00D	8	57	32	4,0	0,2		105		205



11172



Holders

Ø d ₁	Designation	Ø d _A	Ø d ₃	l ₁	l ₂	11172	...
mm		mm	mm	mm	mm		
6	EC-ADX20-06	20	25	65	14		101
8	EC-ADX20-08	20	25	65	14		102

Al<10%Si	Al>10%Si	Cu	St<520N	St<750N	St<900N	St<1100N	St<1200N	St<1400N	<45HRC	<55HRC	<60HRC	<67HRC	VA-steel<900N	VA-steel>900N	Ti alloys	GG(G)	Plastics
80-1300	80-600	80-300	60-230	60-200	60-180	50-160	40-150	40-140	-	-	-	-	40-200	40-100	30-120	80-200	-

11173 - 11175 Drilling and Turning Tool EcoCut Classic



NEW

11173



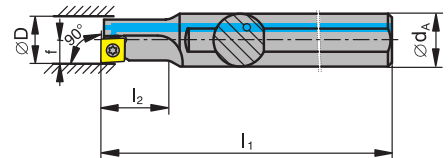
Type
 - Drilling and turning in one
 - Multi-function tool with indexable insert
 - Made of high-quality tool steel with hard&tough coating
 - Chip-Booster coolant bore

Use
 - For drilling into solid material with level drill base
 - For facing operations
 - For external and internal profiling

Note:
 For boring depths up to 3 x D available on request.

11173
Type
 - Straight chip space
Use
 For boring depths up to 1,5 x D.

11174
Type
 - Twisted chip space
 - Optimised, axial support collar
Use
 For boring depths up to 2,25 x D.



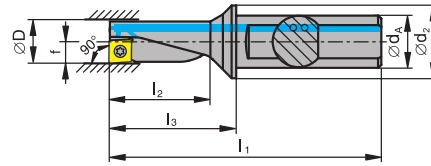
1,5 x D							Right-hand		Left-hand	
Ø D	Designation	Ø d _A	l ₁	l ₂	f	Indexable inserts	11173	...	11173	...
mm		mm	mm	mm	mm					
8	ECC 08R/L-1,5D 04	12	80	12	4	XC.. 0401..		101		201
10	ECC 10R/L-1,5D 05	12	90	15	5	XC.. 0502..		102		202
12	ECC 12R/L-1,5D 06	16	100	18	6	XC.. 0602..		103		203
14	ECC 14R/L-1,5D 07	16	110	21	7	XC.. 0703..		104		204
16	ECC 16R/L-1,5D 08	20	125	24	8	XC.. 0803..		105		205
18	ECC 18R/L-1,5D 09	25	135	27	9	XC.. 09T3..		106		206
20	ECC 20R/L-1,5D 10	25	150	30	10	XC.. 10T3..		107		207
25	ECC 25R/L-1,5D 13	32	180	37,5	12,5	XC.. 1304..		108		208
32	ECC 32R/L-1,5D 17	40	200	48	16	XC.. 1705..		109		209

Continuation ▶





Continuation ▶



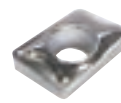
11174

Right-hand 11174 ... Left-hand 11174 ...

2,25 x D

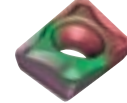
Ø D mm	Designation	Ø d _A mm	Ø d ₂ mm	l ₁ mm	l ₂ mm	l ₃ mm	f mm	Indexable inserts	Right-hand 11174	...	Left-hand 11174	...
8	ECC 08R/L-2,25D 04	10	15	60,0	18,0	22,0	4	XC.. 0401..	101		201	
10	ECC 10R/L-2,25D 05	12	18	69,5	22,5	27,5	5	XC.. 0502..	102		202	
12	ECC 12R/L-2,25D 06	16	22	78,0	27,0	33,0	6	XC.. 0602..	103		203	
14	ECC 14R/L-2,25D 07	16	23	83,5	31,5	38,5	7	XC.. 0703..	104		204	
16	ECC 16R/L-2,25D 08	20	28	94,0	36,0	44,0	8	XC.. 0803..	105		205	
18	ECC 18R/L-2,25D 09	25	36	109,5	40,5	53,5	9	XC.. 09T3..	106		206	
20	ECC 20R/L-2,25D 10	25	35	111,0	45,0	55,0	10	XC.. 10T3..	107		207	
25	ECC 25R/L-2,25D 13	32	44	129,0	56,5	69,0	12,5	XC.. 1304..	108		208	
32	ECC 32R/L-2,25D 17	40	54	158,0	72,0	88,0	16	XC.. 1705..	109		209	

Indexable Inserts and Spare Parts



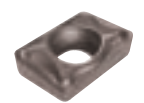
N

H216T
Coated
-
XCET ..
11175



PMK

CTCP435
Colourful Coat
7,5 µm
XCNT ..
11175



NPMKS

CTPP430
PVD/TiAlN
7,0 µm
XCNT ..
11175

Use

Carbide type
Coating
Coating thickness
Designation

	r mm						
040102ER	0,2	10 pcs.					201 301
040102FR-27P	0,2	10 pcs.		101			
040104ER	0,4	10 pcs.					202 302
040104FR-27P	0,4	10 pcs.		102			
050202EN	0,2	10 pcs.					203 303
050202FN-27P	0,2	10 pcs.		103			
050204EN	0,4	10 pcs.					204 304
050204FN-27P	0,4	10 pcs.		104			
060202EN	0,2	10 pcs.					205 305
060202FN-27P	0,2	10 pcs.		105			
060204EN	0,4	10 pcs.					206 306
060204FN-27P	0,4	10 pcs.		106			
070304EN	0,4	10 pcs.					207 307
070304FN-27P	0,4	10 pcs.		107			
080304EN	0,4	10 pcs.					208 308
080304FN-27P	0,4	10 pcs.		108			
09T304EN	0,4	10 pcs.					209 309
09T304FN-27P	0,4	10 pcs.		109			
10T304EN	0,4	10 pcs.					210 310
10T304FN-27P	0,4	10 pcs.		110			
10T308EN	0,8	10 pcs.					211 311
10T308FN-27P	0,8	10 pcs.		111			
130404EN	0,4	10 pcs.					212 312
130404FN-27P	0,4	10 pcs.		112			
130408EN	0,8	10 pcs.					213 313
130408FN-27P	0,8	10 pcs.		113			
170508EN	0,8	10 pcs.					214 314
170508FN-27P	0,8	10 pcs.		114			

Spare parts

Clamping screw

17999

Wrench

51932

for indexable inserts	Clamping screws	Wrench					
XC.. 0401..	M 1,8 x 3,0	IP 6					111 402
XC.. 0502..	M 2,0 x 4,3	IP 6					112 402
XC.. 0602..	M 2,2 x 5,0	IP 7					106 403
XC.. 0703..	M 2,5 x 6,0	IP 8					107 404
XC.. 0803../09T3..	M 3,0 x 7,0	IP 9					108 405
XC.. 10T3	M 3,5 x 8,6	IP 15					109 407
XC.. 1304../1705..	M 4,5 x 10,5	IP 20					110 408

Al<10%Si	Al>10%Si	Cu	St<520N	St<750N	St<900N	St<1100N	St<1200N	St<1400N	<45HRC	<55HRC	<60HRC	<67HRC	VA-steel<900N	VA-steel>900N	Ti alloys	GG(G)	Plastics
100-1500	100-800	100-400	60-230	60-200	60-180	50-160	40-150	40-140	-	-	-	-	40-200	40-100	30-120	80-250	-