



Möbel für Menschen

Type

- Wide range of different dimensions for every purpose
- Even better operating safety and wear resistance
- Ergonomic attractive optic thanks to the recessed grip Ergo-Lock (3 bar lock) in black with 2 keys
- Door hinges with approx. 110° opening angle
- On request with hinges on the outside, approx. 180° opening angle
- Door reinforcement in the middle for high door stability
- High flexibility of the interior equipment by adjustability in 15 mm grid pattern
- High load capacity per galvanised shelf: 70 kg (up to 110 kg in the reinforced version)
- Body finish RAL 7035
- Door finish RAL 5012, RAL 7035 or RAL 6011

85120 601-606

85120 501-506



Ergo-Lock recessed handle lock, wear resistant and user friendly



Cabinets with depths of 400, 500 and 600 mm

85122 504-507

External dimensions W x D mm	Height mm	Number of shelves	RAL 5012		RAL 7035	
			85120	...	85120	...
930 x 400	1950	4	F # 501		F # 601	
930 x 500	1950	4	F # 502		F # 602	
930 x 600	1950	4	F # 503		F # 603	
1200 x 400	1950	4	F # 504		F # 604	
1200 x 500	1950	4	F # 505		F # 605	
1200 x 600	1950	4	F # 506		F # 606	

External dimensions W x D mm	Height mm	Number of shelves	RAL 5012		RAL 7035	
			85121	...	85121	...
930 x 400	1000	1	F # 503		F # 603	
930 x 500	1000	1	F # 504		F # 604	
1200 x 400	1000	1	F # 505		F # 605	
1200 x 500	1000	1	F # 506		F # 606	



85122 604-607

External dimensions W x D mm	Height mm	Number of shelves	RAL 5012		RAL 7035	
			85122	...	85122	...
930 x 400	1200	2	F # 504		F # 604	
930 x 500	1200	2	F # 505		F # 605	
1200 x 400	1200	2	F # 506		F # 606	
1200 x 500	1200	2	F # 507		F # 607	



85124

Accessories for cabinets with swing doors with shelves



Möbel für Menschen

85124 201-304 Shelves

Type Galvanised incl. 4 shelf supports

85124 401 Shelf supports

Type Galvanised, pack = 10 pcs.

85124 201-304

for width mm	for depth mm	Height mm	Shelves		Shelf supports	
			85124	...	85124	...
930	400	24	# 201			
930	500	24	# 203			
930	600	24	# 204			
1200	400	24	# 301			
1200	500	24	# 303			
1200	600	24	# 304			
-	-	-				401





85127 Cabinets with swing doors with drawers



- Type**
- Wide range of different dimensions for every purpose
 - Even better operating safety and wear resistance
 - Ergonomic attractive optic thanks to the recessed grip Ergo-Lock (3 bar lock) in black with 2 keys
 - Door hinges with approx. 110° opening angle
 - On request with hinges on the outside, approx. 180° opening angle
 - Door reinforcement in the middle for high door stability
 - Body finish RAL 7035
 - Door finish RAL 5012 or RAL 7035

85127 101-102 + 602-603

- Figure 1**
- Left side: - 3 shelves
 - 2 large drawers
 - Right side: - 3 shelves
 - 2 large drawers



Figure 1

85127 103-104 + 604-605

- Figure 2**
- Left side: - 3 shelves
 - 4 small drawers
 - Right side: - 3 shelves
 - 2 large drawers



Figure 2

85127 105-106 + 606+609

- Figure 3**
- Left side: - 2 shelves
 - 4 small drawers
 - 4 large drawers
 - Right side: - 4 shelves



Figure 3

85127 107-108 + 607-608

- Figure 4**
- Left side: - 1 valuables compartment with cylinder lock
 - 8 large drawers
 - Right side: - 4 shelves



Figure 4

External dimensions W x D mm	Height mm	Figure	RAL 5012		RAL 7035	
			85127	...	85127	...
930 x 500	1950	1	F # 101		F # 602	
1200 x 500	1950	1	F # 102		F # 603	
930 x 500	1950	2	F # 103		F # 604	
1200 x 500	1950	2	F # 104		F # 605	
930 x 500	1950	3	F # 105		F # 606	
1200 x 500	1950	3	F # 106		F # 609	
930 x 500	1950	4	F # 107		F # 601	
1200 x 500	1950	4	F # 108		F # 608	

Ergo-Lock recessed handle lock, wear resistant and user friendly



85130 Accessories for cabinets with swing doors with drawers



- 85130 101-102**
- Shelves**
- Type**
- Galvanised incl. 4 shelf supports

- 85130 103-105**
- Drawer division**
- Type**
- With plastic boxes.

- 85130 106-107**
- Drawer division**
- Type**
- With galvanised partition plates.



85130 101-102

	for width mm	for depth mm	Height mm	85130	...
Shelf	930	500	24	# 101	
Shelf	1200	500	24	# 102	
Drawer fittings, boxes	930	500	-	# 103	
Drawer fittings, boxes	1200	500	-	# 105	
Drawer fittings, partition plates	930	500	-	# 106	
Drawer fittings, partition plates	1200	500	-	# 107	



85130 103-105



Möbel für Menschen

85128 402-404

Type

- Wide range of different dimensions for every purpose
- Attractive optic thanks to the recessed grip Ergo-Lock (3 bar lock) in black with 2 keys
- Door hinges with hinges on the outside, approx. 180° opening angle
- Door reinforcement in the middle for high door stability
- High flexibility of the interior equipment by adjustability in 15 mm grid pattern
- High load capacity per galvanised shelf: 70 kg (up to 110 kg in the reinforced version)
- 3 shelves
- 3 drawers with telescopic rail guides, 100 % extension, 50 kg load capacity / drawer
- Wall fittings required if the drawers are loaded
- Body finish RAL 7035
- Door finish RAL 5012 or RAL 7035



85128 505-507



85128 402-407

Type
Block of drawers, bottom.

85128 502-507

Type
Block of drawers, middle.



Ergo-Lock recessed handle lock, wear resistant and user friendly



Cabinets with depths of 400, 500 and 600 mm

Drawer block	External dimensions W x D mm	Height mm	RAL 5012		RAL 7035	
			85128	...	85128	...
Bottom	1200 x 400	1950	F # 402		F # 405	
Bottom	1200 x 500	1950	F # 403		F # 406	
Bottom	1200 x 600	1950	F # 404		F # 407	
Middle	1200 x 400	1950	F # 502		F # 505	
Middle	1200 x 500	1950	F # 503		F # 506	
Middle	1200 x 600	1950	F # 504		F # 507	

85131

Accessories for large tool cabinets



Möbel für Menschen

85131 101-103

Shelves

Type
Galvanised incl. 4 shelf supports

85131 101-103



85131 201-202

85131 201-202

Drawer division

Type
With plastic boxes.



85131 301-302

Drawer division

Type
With galvanised partition plates.

85131 301-302



	for width mm	for depth mm	Height mm	85131	...
Shelf	1200	400	24	#	101
Shelf	1200	500	24	#	102
Shelf	1200	600	24	#	103
Drawer fittings, boxes	1200	400	-	#	201
Drawer fittings, boxes	1200	500 + 600	-	#	202
Drawer fittings, partition plates	1200	400	-	#	301
Drawer fittings, partition plates	1200	500 + 600	-	#	302



85137 - 85139 Folding door cabinets



NEW

85137 - 85138

Folding door cabinets

Type

- Cabinet height 1000 or 1950 mm
- 2 widths: 1200 or 1500 mm
- 3 depths: 400, 500 or 600 mm
- 2 (for height 1000 mm) or 4 (for height 1950 mm) galvanised shelves (also available as powder coated on request) with a 17 mm grid pattern, 80 kg load capacity
- At an additional price, also a shelf load capacity of 100 kg at equal load distribution possible
- Reinforced doors and 3-bar turning handle with integrated cylinder lock
- Extremely high warping resistance due to corner soldering
- High-quality powder coating
- Body finish RAL 7035
- Door finish RAL 7035 or 5012
- Total load capacity 400 kg at equal load distribution



85139

Shelves

Type

- Galvanised
- 80 kg load capacity



W x D mm	Finish RAL	H 1950 mm		H 1000 mm		Shelve	
		85137	...	85138	...	85139	...
1200 x 400	7035/5012	F #	101	F #	101	#	101
1200 x 400	7035	F #	201	F #	201	#	101
1200 x 500	7035/5012	F #	102	F #	102	#	102
1200 x 500	7035	F #	202	F #	202	#	102
1200 x 600	7035/5012	F #	103	F #	103	#	103
1200 x 600	7035	F #	203	F #	203	#	103

1000 x 1200 x 400 85138 101



1000 x 1500 x 600 85138 206



W x D mm	Finish RAL	H 1950 mm		H 1000 mm		Shelve	
		85137	...	85138	...	85139	...
1500 x 400	7035/5012	F #	104	F #	104	#	201
1500 x 400	7035	F #	204	F #	204	#	201
1500 x 500	7035/5012	F #	105	F #	105	#	202
1500 x 500	7035	F #	205	F #	205	#	202
1500 x 600	7035/5012	F #	106	F #	106	#	203
1500 x 600	7035	F #	206	F #	206	#	203

85117 - 85118 Cabinet with swing doors with shelves



85117

Type

- Extra wide
- High-quality and durable sheet steel construction
- All edges machined in a clean and safe manner
- Extremely high warping resistance due to corner soldering
- Smooth internal doors with approx. 125° door opening angle (180° with door hinges on the outside subject to charge)
- Doors with reinforced recessed grip
- Using the practical turning handle, the door can be locked with the 3 bars and locked together
- Integrated cylinder lock with 2 keys
- 4 galvanised shelves with a 17 mm grid pattern, easily and individually height adjustable, 80 kg load capacity
- Body finish RAL 7035
- Door finish RAL 5012 or RAL 7035
- TÜV/GS tested and 100 % Made in Germany



85117


Continuation ▶



Facility Equipment

85117 - 85118

Cabinet with swing doors with shelves

Continuation 



Practical turning handle for 3 bar lock (also easy to operate when wearing working gloves)



Door hinges with hinges on the outside (surcharge) with 180° door opening angle for even better

85118 Shelves

Type
- Galvanised
- 80 kg load capacity

85118



Dimensions H x W x D mm	Number of shelves	Shelves H x W x D mm	RAL 7035		RAL 7035/5012		Shelves	
			85117	...	85117	...	85118	...
1950 x 1500 x 400	4	30 x 1483 x 370	F #	101	F #	201 NEW	#	101
1950 x 1500 x 500	4	30 x 1483 x 470	F #	102	F #	202 NEW	#	102
1950 x 1500 x 600	4	30 x 1483 x 570	F #	103	F #	203 NEW	#	103

85140 - 85142

Steel organisation cabinets with viewing windows



Möbel für Menschen

Type

- Steel construction with long service life
- Very good operating safety, wear resistant and attractive optic due to the handle lock Ergo-Lock (3-bolt lock) in black with 2 keys
- Door hinges with hinges on the outside, approx. 180° opening angle
- Steel doors with viewing window made from acrylic glass (3 mm thickness) for direct viewing
- High flexibility of the interior equipment by adjustability in 15 mm grid pattern
- High capacity per galvanised shelf 70 kg



Ergo-Lock recessed handle lock, registered for patent



Wear resistant and ergonomic, attractive optic

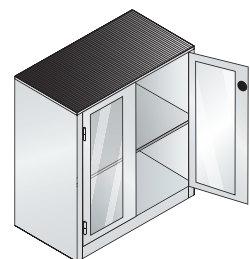
85140 201-206



85141 201-202



85142 201-202



Exterior dimensions H x W x D mm	Finish RAL	Shelf thickness 24 mm	85140	...
1950 x 930 x 400	7035	4	F #	101
1950 x 930 x 400	7035/5012	4	F #	201
1950 x 930 x 500	7035	4	F #	102
1950 x 930 x 500	7035/5012	4	F #	202
1950 x 930 x 600	7035	4	F #	103
1950 x 930 x 600	7035/5012	4	F #	203
1950 x 1200 x 400	7035	4	F #	104
1950 x 1200 x 400	7035/5012	4	F #	204
1950 x 1200 x 500	7035	4	F #	105
1950 x 1200 x 500	7035/5012	4	F #	205
1950 x 1200 x 600	7035	4	F #	106
1950 x 1200 x 600	7035/5012	4	F #	206

Exterior dimensions H x W x D mm	Finish RAL	Shelf thickness 24 mm	85141	...
1200 x 930 x 400	7035	2	F #	101
1200 x 930 x 400	7035/5012	2	F #	201
1200 x 1200 x 500	7035	2	F #	102
1200 x 1200 x 500	7035/5012	2	F #	202

Exterior dimensions H x W x D mm	Finish RAL	Shelf thickness 24 mm	85142	...
1000 x 930 x 400	7035	1	F #	101
1000 x 930 x 400	7035/5012	1	F #	201
1000 x 1200 x 500	7035	1	F #	102
1000 x 1200 x 500	7035/5012	1	F #	202

Facility Equipment



85135 - 85136 Tool cabinet (with shelves)



85135 601

Type

With plastic roller shutter. Precisely manufactured, made of high-quality thin sheet. Upper opening direction of shutter. Tools are stored safely and dust is kept away thanks to the roller blinds (lockable), shelves not included.

Standard finish: RAL 7035 light grey.

Further finishes in RAL 3003, 3020, 5012, 5013, 5015, 6011 and 9005 available without additional cost (not in stock).

Note:

The shelves (cat.-no. 85136 101) must be ordered separately.

85136 101

Shelf

Type

Adjusting grid 25 x 25 mm, load capacity 100 kg.



85135

	Dimensions H x W x D mm	85135	...	85136	...
Cabinet	1950 x 1000 x 500	F #	601		
Shelf	22 x 925 x 418			#	101

85115 Multi-purpose cabinet



Type

Housing made of sheet steel, plastic-coated. Smooth front, when doors are closed. Folding doors fully reinforced, opening angle more than 200°, rods and levers in guides. 4 galvanised shelves, can be adjusted in grids of 10 mm, 80 kg at equal load distribution. 3 bar safety cylinder lock with recessed turning handle.

Standard finish:

Housing RAL 7035 light grey, Doors RAL 5012 light blue, powder-coated.

Note:

Further group or master keys are available on request.

	RAL 7035/5012	...	RAL 7035	...
External dimensions H x W x D mm	85115		85115	
1950 x 1000 x 410	F #	401	F #	600
1950 x 1000 x 500	F #	402	F #	601



85115

85116 Shelves for cat.-no. 85115

for depth of cabinet mm	85116	...
410	#	101
500	#	102



85116

LARGE SELECTION – SIMPLE SEARCH

Always remember! CATALOGUE VOLUME [1]

The specialist catalogue for machining and clamping technology.

Experience our extensive product range of quality tools from **ATORN**.

ATORN® Performance requires quality





KAPPES

Type

Load capacity up to 1,65 tons. The floor of the cabinet by itself has a load capacity of 400 kg at equal distribution. Extremely sturdy, welded steel construction, corners brazed. Impact and scratch-resistant plastic coating. Housing light grey. Doors by default light blue or light grey. Available on request doors in gentian blue or reseda green (not in stock). As an option: double-walled reinforced doors or doors with windows. Front-built doors for a smooth front, opening angle more than 200°. Continuous rodding guiding. Telescope-guided drawers with 100 % extension. **Drawer load capacity 110 kg at equal distribution.** Adjustability grid pattern 25 mm. Three-bolt security cylinder lock.

Note:

Drawer stop available on request.
Additional shelves see cat.-no. 85180.

85160

Without middle divider.

Drawers W x D 900 x 520 mm. Galvanised shelves, load capacity 160 kg at equal distribution.

85165

With middle divider.

Drawers W x D 443 x 500 mm. Galvanised shelves, load capacity 80 kg at equal distribution.

Note:

End no. 401, 405, 501 and 505 **without** drawers.



Different

types of doors:

- viewing window
- Perforated panel (available on request)
- slotted panel (available on request)
- double-walled sheet metal doors

85160 401



85160 402



85160 403



85160 404



85165 501



85165 502



85165 503



85165 504



Without divider				RAL 7035/5012		RAL 7035		RAL 7035/5012		RAL 7035	
Doors	Dimensions H x W x D mm	Shelves	Drawer height mm 100 / 125 / 175	85160	...	85160	...	85160	...	85160	...
Full sheet metal	1950x1000x600	4	- / - / -	F #	401	F #	501				
Full sheet metal	1950x1000x600	3	- / - / 2	F #	402	F #	502				
Full sheet metal	1950x1000x600	3	1 / 2 / -	F #	403	F #	503				
Full sheet metal	1950x1000x600	2	1 / 2 / 2	F #	404	F #	504				
Viewing window	1950x1000x600	4	- / - / -					F #	405	F #	505
Viewing window	1950x1000x600	3	- / - / 2					F #	406	F #	506
Viewing window	1950x1000x600	3	1 / 2 / -					F #	407	F #	507
Viewing window	1950x1000x600	2	1 / 2 / 2					F #	408	F #	508
With divider				RAL 7035/5012		RAL 7035		RAL 7035/5012		RAL 7035	
Doors	Dimensions H x W x D mm	Shelves	Drawer height mm 100 / 125 / 175	85165	...	85165	...	85165	...	85165	...
Full sheet metal	1950x1000x600	6	- / - / -	F #	401	F #	501				
Full sheet metal	1950x1000x600	6	- / - / 4	F #	402	F #	502				
Full sheet metal	1950x1000x600	6	- / 6 / -	F #	403	F #	503				
Full sheet metal	1950x1000x600	6	4 / - / 4	F #	404	F #	504				
Viewing window	1950x1000x600	6	- / - / -					F #	405	F #	505
Viewing window	1950x1000x600	6	- / - / 4					F #	406	F #	506
Viewing window	1950x1000x600	6	- / 6 / -					F #	407	F #	507
Viewing window	1950x1000x600	6	4 / - / 4					F #	408	F #	508

Facility Equipment



85166

Heavy-load cabinets for 1.65 t load capacity

KAPPES

Type

Load capacity up to 1,65 tons. The floor of the cabinet by itself has a load capacity of 400 kg at equal distribution. Extremely sturdy, welded steel construction, corners brazed. Impact and scratch-resistant plastic coating. Housing light grey. Doors by default light blue or light grey. Available on request doors in gentian blue or reseda green (not in stock). Reinforced double-walled doors. Front-built doors for a smooth front, opening angle more than 200°. Continuous rodding guiding. Telescope-guided drawers with 100 % extension. **Drawer load capacity 110 kg at equal distribution.** Adjustability grid pattern 25 mm. Three-bolt security cylinder lock.

Note:

Drawer stop available on request.
Additional shelves see cat.-no. 85180.

85166 101-102 + 201-202

Without middle divider.

Drawers W x D 900 x 520 mm. Galvanised shelves, load capacity 160 kg at equal distribution.

85166 103-104 + 203-204

With middle divider.

Drawers W x D 443 x 500 mm. Galvanised shelves, load capacity 80 kg at equal distribution.

85166 101



85166 102



85166 103



85166 104



Doors	Dimensions H x W x D mm	Middle divider	Shelves	Drawer height 100 mm	Drawer height 125 mm	Drawer height 175 mm	RAL 7035/5012		RAL 7035	
							85166	...	85166	...
Full sheet metal	1110 x 1000 x 600	without	1	2	-	-	F #	101	F #	201
Full sheet metal	1110 x 1000 x 600	without	-	2	1	1	F #	102	F #	202
Full sheet metal	1110 x 1000 x 600	with	2	2	2	2	F #	103	F #	203
Full sheet metal	1110 x 1000 x 600	with	-	-	16	-	F #	104	F #	204

85180

Shelves for Cabinets for Heavy Loads

Type

Sheet steel, galvanised, with shelf supports.

85180 101

Use

For cat.-no. 85160, 85166 101-102 and 85166 201-202.

85180 102+103

Use

For cat.-no. 85165, 85166 103-104 and 85166 203-204.

Dimensions W x D mm	Load capacity per shelf kg	Type	85180	...
935 x 535	160	-	#	101
440 x 535	80	right	#	102
440 x 535	80	left	#	103

85180



85185

Cabinets for cordless devices

HW

Type

3-point safety lock. Behind each shelf, mounted on an additional back wall (approx. 10-15 cm in front of the cabinet back wall), is a 6-x multiple socket outlet 230 V with fuse. Cabinet, swing doors and shelves extra grounded. Cabinet with air vents in front and back, fan and peripheral device outlet, 16 A, on the side for receiving a 380 V plug, within the cabinet distribution box with 3 fuses. Assembled and wired. Body finish RAL 7035. Doors finish RAL 5012.

Use

For securely and clearly storing battery chargers and cordless devices.

85185 101

Type

3 fixed shelves, 1 drawer 90 mm high with 100 % extension.

85185 102

Type

3 fixed shelves, 1 shelf adjustable (not grounded), 1 drawer 90 mm high with 100 % extension.

85185 102

Dimensions H x W x D mm	Number of shelves	Number of drawers	RAL 7035/5012	
			85185	...
1030 x 1000 x 500	3	1	F #	101
1950 x 1000 x 500	4	1	F #	102

85185 101



Facility Equipment



85123

Cabinets with swing doors with clothes rail



Möbel für Menschen

85123 602-603

Type

- Even better operating safety and wear resistance
- Ergonomic attractive optic thanks to the recessed handle lock Ergo-Lock (3 bar lock) in black with 2 keys
- Door hinges with approx. 110° opening angle
- With middle divider

- Left side, hat shelf and clothes rail (without coat hangers)
- Right side 4 shelves
- Body finish RAL 7035
- Door finish RAL 5012 or RAL 7035

85123 701

Shelf

Type
Galvanised incl. 4 shelf supports



Ergo-Lock recessed handle lock, wear resistant and user friendly

85123 603



External dimensions W x D mm	Height mm	RAL 5012		RAL 7035		Shelves	
		85123	...	85123	...	85123	...
930 x 500	1950	F #	603	F #	602	#	701

85307

Wardrobes

Type

- Welded sheet steel construction on a base plinth
- Doors with marking frames, air vents and turning locking bar for padlocks
- Finish RAL 7035 light grey, powder-coated

Note:

Also available on request with legs.
Padlock see cat.-no. 86929 cont.

85307 602

85307 603

85307 604



Number of compartments	External dimensions H x W x D mm	85307	...
1	1800 x 300 x 500	F #	601
2	1800 x 600 x 500	F #	602
3	1800 x 900 x 500	F #	603
4	1800 x 1200 x 500	F #	604

85308

Doubledecker wardrobe

Type

- On a base plinth
- 2 compartments above one another, 1 door for each compartment
- each compartment with 1 clothes rail and 3 hooks
- doors with air vents for ventilation and label frames for marking
- Turning locking bar for padlocks
- Finish RAL 7035 light grey

Note:

Padlock see cat.-no. 86929 cont.

85308 101

85308 102



Number of compartments	Compartment width mm	Number of shelves	External dimensions H x W x D mm	85308	...
2	300	4	1940 x 600 x 500	F #	101
3	300	6	1940 x 900 x 500	F #	102

85309

Valuables lockers and middle wardrobe section

85309 101

Valuables locker

Type

- On a base plinth
- Stable, fixed welded steel construction
- Reinforced doors with cylinder lock and 2 keys each
- Finish RAL 7035 light grey

Note:

If more are required, the valuables locker and middle wardrobe section (cat.-no. 85309 201) can be arranged next to each other in any combination.

85309 201

Middle wardrobe section

Type

- Comprising:
- 1 top sheet steel cover
 - 1 hat shelf
 - 1 clothing rail with
 - 5 coat hangers
 - 1 shoe rail

Use

For use with valuable lockers (cat.-no. 85309 101).

85309 101

85309 101 (2x) + 85309 201



	Number of compartment	External dimensions H x W x D mm	85309	...
Valuable lockers	5	1900 x 410 x 450	F #	101
Middle wardrobe section	-	- x 670 x 450	#	201



Wardrobe cabinets | Small compartment cabinets

85301 - 85312

Wardrobe cabinet S 2000 Classic



Möbel für Menschen

Type

- Easy interior cleaning due to the smooth compartment floors that can be swept
- Insertable hat shelf and clothes rail with 3 sliding hooks for each compartment
- Turning locking bar for padlocks as practical basic equipment
- Body finish RAL 7035
- Doors finish RAL 7035

Doors:

- Right side closed
- Mounted in the pintle
- With vertical box reinforcement
- Air vents
- Stamped label frame

Note:

Padlock see cat.-no. 86929 cont.

85301

Type

With plastic feet = increased corrosion protection of the cabinet.

85303

Type

With base plinth.

85312

Type

With seating bench incl. adjustable base slides for simple level compensation (10 mm).

85301 601+701



85303 602+702



85312 603+703



Turning locking bar for padlocks with 4,5-6,5 mm shackle thickness



Good ventilation and drying in the compartment

With feet		Compartment width mm	External dimensions H x W x D mm	85301	...
Number of compartments					
2	300	1850 x 610 x 500	F #	601	
2	400	1850 x 810 x 500	F #	701	
3	300	1850 x 900 x 500	F #	602	
3	400	1850 x 1200 x 500	F #	702	
4	300	1850 x 1190 x 500	F #	603	
4	400	1850 x 1590 x 500	F #	703	

With base plinth		Compartment width mm	External dimensions H x W x D mm	85303	...
Number of compartments					
2	300	1800 x 610 x 500	F #	601	
2	400	1800 x 810 x 500	F #	701	
3	300	1800 x 900 x 500	F #	602	
3	400	1800 x 1200 x 500	F #	702	
4	300	1800 x 1190 x 500	F #	603	
4	400	1800 x 1590 x 500	F #	703	

With seating bench		Compartment width mm	External dimensions H x W x D mm	85312	...
Number of compartments					
2	300	2090 x 610 x 500	F #	601	
2	400	2090 x 810 x 500	F #	701	
3	300	2090 x 900 x 500	F #	602	
3	400	2090 x 1200 x 500	F #	702	
4	300	2090 x 1190 x 500	F #	603	
4	400	2090 x 1590 x 500	F #	703	

85315

Wardrobe cabinets S 3000 Evolo



Möbel für Menschen

Type

- With storage box mounted underneath
- Sitting area made from solid beechwood timber
- Easy interior cleaning due to the smooth compartment floors that can be swept
- Hat shelf with stable wardrobe rails made from oval profile
- 3 Different hooks with system mounts, e.g., for clothes hooks or different compartment dividers
- Ergonomic safety turning locking bar with lock guard as practical basis equipment
- Body finish RAL 7035
- Doors finish RAL 7035

Doors:

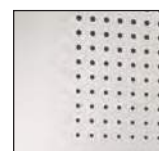
- Increased burglary resistance thanks to the extremely warp-resistant doors
- Doors that close to one-another in pairs for a combined lock
- Mounted in the pintle
- With cleaning-friendly hole pattern
- Embossed label frame for integrated numbering
- Comfortable door stop dampers for a pleasant closing state

Note:

Padlock see cat.-no. 86929 cont.

Number of compartments	For number of persons	Compartment width mm	External dim. H x W mm	External dim. depth mm compartment / storage box	85315	...
2	1	300	2090 x 610	500 / 815	F #	101
2	1	400	2090 x 810	500 / 815	F #	201
4	2	300	2090 x 1190	500 / 815	F #	102
4	2	400	2090 x 1590	500 / 815	F #	202

85315 102+202



Cleaning-friendly - ventilation - hole pattern



Safety turning locking bar with lock guard



The seating area is also used as a lock at the same time and can only be opened by the cabinet owner



Use the storage area under the seating area

Facility Equipment

85310

Doubledecker wardrobe cabinet S 2000 Classic



Möbel für Menschen

Type

- Doubledeck, 2 compartments on top of each other
- For each compartment, 1 door, clothes rail and 3 sliding hooks
- Easy interior cleaning due to the smooth compartment floors that can be swept
- Turning locking bar for padlocks as practical basic equipment
- Body finish RAL 7035
- Doors finish RAL 7035

Doors:

- Right side closed
- Mounted in the pintle
- Top and bottom, each with 1 perforated hole rosette
- Stamped label frame

Note:

Padlock see cat.-no. 86929 cont.

85310 701-703

Type

With plastic feet = increased corrosion protection of the cabinet.

85310 601-603

Type

With base plinth.

85310 603



With feet

Number of compartments on top of each other	Number of compartments	Number of shelves	Compartment width mm	External dim. H x W x D mm	85310	...
2	2	4	300	1850 x 610 x 500	F #	701
2	3	6	300	1850 x 900 x 500	F #	702
2	4	8	300	1850 x 1190 x 500	F #	703

With base plinth

Number of compartments on top of each other	Number of compartments	Number of shelves	Compartment width mm	External dim. H x W x D mm	85310	...
2	2	4	300	1800 x 610 x 500	F #	601
2	3	6	300	1800 x 900 x 500	F #	602
2	4	8	300	1800 x 1190 x 500	F #	603

85316 - 85318

Small compartment cabinets S 2000 Classic



Möbel für Menschen

Type

- Smooth doors on one side
- Each door with cylinder lock and 2 keys
- The base of the shelves are generally carried out in the finish of the body
- Body finish RAL 7035
- Doors finish RAL 7035

85316 501-503

85317 601-603

85318 601-603

Type

With plastic feet = increased corrosion protection of the cabinet.

85316 601-603

85317 501-503

85318 501-503

Type

With base plinth.

Note:

Plastic lable frames for doors available on request.

85318 501

85316 502

85317 601



With feet

Number of compartments on top of each other	Number of compartments	Number of shelves	Compartment width mm	External dim. H x W x D mm	85316	...	85317	...	85318	...
3	2	6	300	1850 x 610 x 500	F #	501				
3	3	9	300	1850 x 900 x 500	F #	502				
3	4	12	300	1850 x 1190 x 500	F #	503				
4	2	8	300	1850 x 610 x 500			F #	601		
4	3	12	300	1850 x 900 x 500			F #	602		
4	4	16	300	1850 x 1190 x 500			F #	603		
5	2	10	300	1850 x 610 x 500					F #	601
5	3	15	300	1850 x 900 x 500					F #	602
5	4	20	300	1850 x 1190 x 500					F #	603

With base plinth

Number of compartments on top of each other	Number of compartments	Number of shelves	Compartment width mm	External dim. H x W x D mm	85316	...	85317	...	85318	...
3	2	6	300	1800 x 610 x 500	F #	601				
3	3	9	300	1800 x 900 x 500	F #	602				
3	4	12	300	1800 x 1190 x 500	F #	603				
4	2	8	300	1800 x 610 x 500			F #	501		
4	3	12	300	1800 x 900 x 500			F #	502		
4	4	16	300	1800 x 1190 x 500			F #	503		
5	2	10	300	1800 x 610 x 500					F #	501
5	3	15	300	1800 x 900 x 500					F #	502
5	4	20	300	1800 x 1190 x 500					F #	503



Cabinet feet made of plastic for a better corrosion protection



Each door with cylinder lock and 2 keys

Facility Equipment



85320 - 85324

Multi-purpose cabinet S 2000 Classic



Möbel für Menschen

Type

- Doors close against one-another
- With a common turning locking bar for padlocks
- Shelves not height adjustable
- Body finish RAL 7035
- Doors finish RAL 7035

Note:

Padlock see cat.-no. 86929 cont.

85320

Clothing wardrobe cabinet

Type

- Left, 4 shelves
- Right side, 1 hat shelf, 1 clothing rail, 3 sliding hooks

85322

Room care equipment cabinet

Type

- Left side, shortened divider, 4 shelves
- Right side, 1 rail with 6 sliding hooks

85324

Clothing and storage cabinet

Type

- 4 continuous shelves

85320 501

85322 501

85324 501

Type

With plastic feet = increased corrosion protection of the cabinet.

85320 601

85322 601

85324 601

Type

With base plinth.



85320 601



85322 601



85324 601



Turning locking bar for padlocks with 4,5-6,5 mm shackle thickness



Good ventilation and drying in the compartment

Cabinet type	Type	Number of compartments	Compartment width mm	External dim. H x W x D mm	85320	...	85322	...	85324	...
Clothes cabinet	with feet	2	300	1850 x 610 x 500	F #	501				
Clothes cabinet	with base plinth	2	300	1800 x 610 x 500	F #	601				
Room care equipment cabinet	with feet	2	300	1850 x 610 x 500			F #	501		
Room care equipment cabinet	with base plinth	2	300	1800 x 610 x 500			F #	601		
Clothing and storage cabinet	with feet	1	300	1850 x 610 x 500					F #	501
Clothing and storage cabinet	with base plinth	1	300	1800 x 610 x 500					F #	601

85325

Free sitting benches



Möbel für Menschen

Type

- Bench slats made from hardwood strips planed on all sides and rounded for good seating comfort
- Profile approx. 60 x 30 mm
- Clear varnish with natural finish
- Adjustable glides for easy level compensation (10 mm)
- Supplied pre-assembled and ready to use
- Frame finish RAL 7021 anthracite

Note:

Sitting slats made of plastic (e.g., humid rooms) available on request.

85325 100-102

Type

With shoe rail.

85325 200-202

Type

Without shoe rail.

Shoe rail	External dimensions H x W x D mm	Number of feet	85325	...
x	420 x 1000 x 353	4	F #	100
x	420 x 1500 x 353	4	F #	101
x	420 x 1960 x 353	6	F #	102
-	420 x 1000 x 353	4	F #	200
-	420 x 1500 x 353	4	F #	201
-	420 x 1960 x 353	6	F #	202

85325 100-101



85325 200-201



Facility Equipment