

LIFTING CARTS

The programme for lifting, transporting and storage •
From the classical forklift trolley to the machine lifter,
from furniture dollies to a chassis with 24 tons load capacity • Valuable assistants offering every transport solution





2114

Frames and forks of steel construction, finished powder coated distinct yellow. Hand hydraulic pump with maintenance-free bearing. Strong steel handle with counter bearing for pushing operation. Powder coated black; operating lever for lifting, moving, lowering. Steering lock 2 x 100°
 Fork length 1150 mm
 Fork width 160 mm
 Loading width 540 mm
 Lifting range 85-200 mm
 Overall length 1540 mm
 Steering wheels 200 x 50 mm
 Fork rollers 80 x 70 mm
 Locating wheels at fork tips.

2114

Handle powder coated.
 Loading width 540 mm
 Fork rollers Ø x W = 80 x 93 mm

Wheels 2114

Steering wheels polyurethane, fork rollers polyurethane single. Low rolling resistance, non-marking.

Wheels 2115

Steering nylon, fork rollers tandem nylon. Very little rolling resistance. High chemical resistance, non-marking. Good on even, smooth surfaces; hard road noise.

Wheels 2116

Steering elastic-solid rubber wheels, nylon tandem rollers. Low rolling resistance. Easy movement. Good on level and uneven surfaces or when negotiating edges and bumps. Low road noise.

Wheels 2117

Steering wheels polyurethane. Fork rollers tandem polyurethane. Low rolling resistance. Easy movement. Good on sensitive surfaces. Non-marking. Low road noise.

Wheels 2119

Steering wheels with elastic solid rubber tyres. Fork rollers tandem polyurethane. Low rolling resistance. Easy movement. Comfortable to operate. Good on sensitive and uneven surfaces. Advantageous when frequently going over edges and bumps. Low road noise.

Warranty

for pallet trucks 2 years.



2115 | 2116 | 2117 | 2119

**Handle**

Rubber coated.

**Tandem rollers**

Two adjustable rollers housed in each fork. Advantageous for uneven surfaces and when going over edges and bumps. Locating wheels at fork tips.

	Oder no.	Capacity kg	Lifting range mm	Fork length mm	Steered wheels	Fork rollers	Net weight kg
Pallet trucks	2114	2000	85-200	1150	Polyurethane	Polyurethane single	60
	2115	2500	85-200	1150	Nylon	Nylon Tandem	73
	2116	2500	85-200	1150	Solid rubber	Nylon Tandem	75
	2117	2500	85-200	1150	Polyurethane	Polyurethane Tandem	76
	2119	2500	85-200	1150	Solid rubber	Polyurethane Tandem	76

Blue marked item numbers = quick delivery (for details see page 7)

2118 Pallet truck

Short type
Fork length 800 mm
Total length 1190 mm
extremely space saving and
suitable for HGVs.

2120

Low type
Lowered height 55 mm
Lifting range 55-175 mm,
suitable for underclearances
from 57 mm.
Steered wheels:
Ø x W = 180 x 50 mm
Fork rollers:
Ø x W = 51 x 70 mm

2116-15 | 2116-18 | 2116-20

Extra long model.
Fork lengths 1500, 1800 or
2000 mm. Steering wheels
200 x 50 mm solid rubber
tyres. Fork rollers 80 x 70 mm
nylon tandem. Reduced lifting
capacity.

2122 Pallet truck with scale

Pallet truck with scale,
weighing range of 1 – 2000
kg, with a weighing accuracy
of ± 2 kg. Graduation: 1 kg.
LCD-display with 18 mm high
figures, touch-panel with on-/
off- and tare weight button.
Power supply by 4 x 1,5-V-AA-
batteries, protection class IP 65.
Steering wheels Ø x W =
180 x 50 mm
Fork rollers Ø x W = 70 x 70 mm
Loading width 550 mm



2118



2120



2116-15 | 2116-18 | 2116-20



2122



Pallet truck with scale

Warranty
for pallet trucks 2 years.

	Order no.	Capacity kg	Lifting range mm	Fork length mm	Total length mm	Steered wheels	Fork rollers	Net weight kg
Pallet trucks	2118	2500	85–200	800	1190	Solid rubbers	Nylon Single	66
	2120	2000	55–175	1150	1540	Solid rubbers	Nylon Tandem	72
	2116-15	1500	85–200	1500	1890	Solid rubbers	Nylon Tandem	97
	2116-18	1200	85–200	1800	2190	Solid rubbers	Nylon Tandem	100
	2116-20	1000	85–200	2000	2390	Solid rubbers	Nylon Tandem	112
	2122	2000	85–205	1150	1550	Polyurethane	Polyurethane Tandem	117



6815



6820



6821



Attachable platform
for skid lifter
6820 and 6821

6815
High lift pallet truck

Frame and forks made in non-buckling shell-type construction, powder coated, signal yellow. Hydraulic hand pump, service-free bearing. Sturdy tubular steel drawbar with counter bearing for shove operation, powder coated, black, rubber covered handle. Operating lever for the following functions:

- Lifting - moving - lowering
 - Steering lock: 2 x 100°
 - Carrying capacity: 1000 kg
 - Fork length: 1165 mm
 - Fork width: 160 mm
 - Carrying width: 540 mm
 - Lifting range: 85-800 mm
 - Total length: 1540 mm
 - Steered wheels Ø x W = 200 x 50 mm
 - Fork rollers Ø x W = 80 mm
 - Climbing rolls at fork tips.
- High lift pallet truck is no longer movable from pumping height of 290 mm.

6820 | 6821
Skid lifter

Excellent stability under load and travelling even with lifted load. Frame and forks made in sectional steel construction, powder coated, blue RAL 5007. Sturdy tubular push handle. Hydraulic pump with chromium-plated piston and overload valve. Operated via pedal control. Lowering valve to be operated via hand lever. 2 castor wheels with polyurethane tyres 150 x 40 mm and 2 fork rollers nylon 70 x 65 mm, castor wheels with lock.

- Carrying capacity: 500 and 1000 kg
- Fork length: 1115 mm
- Fork width: 153 mm
- Carrying width: 526 mm
- Lifting range: 85-830 mm
- Total length: 1550/1640 mm
- Total width: 526/687 mm

6821: the 1000 kg version is additionally equipped with a steering shaft.

Attachable platform

Made of edged steel plate powder coated blue, suitable for 6820 and 6821. Measures (L x W): 1115 x 538 mm

Warranty

for high lift pallet truck and skid lifter 2 years.

	Order no.	Capacity kg	Lifting range mm	Fork length mm	Steered wheels	Fork rollers	Net weight kg
High lift pallet truck	6815	1000	85-800	1165	Solid rubber	Nylon	110
Skid lifter	6820	500	85-830	1115	Polyurethane	Nylon	107
	6821	1000	85-830	1115	Polyurethane	Nylon	135
Attachable platform	6828	-	-	-	-	-	15

Stackers

For the occasional use as lifting and transport appliance. Sturdy sectional steel construction with tubular push handles, powder coated blue RAL 5007.

6851 | 6852

Hand winch stacker

Maintenance free. Lifting by means of safety hand winch. Forks adjustable. 2 castor wheels, wheels with polyurethane tyres 150 x 40 mm and 2 fork rollers nylon 80 x 47 mm. Castor wheels with lock. Load center distance: 400/500 mm Fork width: 60 mm Stroke per crank turning: 40/22 mm



6851 | 6852

6855 | 6856

Hydraulic hand stackers

Hydraulic pump with chromium-plated piston and overload valve. Operated via drawing shaft. Lowering valve precisely adjustable via hand lever. 2 castor wheels, wheels with polyurethane tyres 150 x 40 mm and 2 fork rollers nylon 80 x 70 mm. Castor wheels with lock. Load center distance: 585 mm Fork width: 160 mm Stroke per shaft operation: 20/12.5 mm



6855 | 6856

Warranty
for stackers 2 years.

	Order no.	Capacity kg	Lifting range mm	Total height mm	Fork length mm	Carrying width mm	Total length mm	Total width mm	Net weight kg
Hand winch stacker	6851	250	90-1560	2030	800	150-690	1350	725	140
	6852	500	90-1560	2030	1000	150-690	1550	725	146
Hydraulic hand stacker	6855	500	88-1500	2010	1150	540	1600	794	210
	6856	1000	88-1500	2010	1150	540	1600	794	220



6831



6832

Lifting table carts

Sectional steel/steel plate construction, powder coated blue RAL 5007. Sturdy tubular push handle. Hydraulic pump with chromium-plated piston. Operation via pedal control. Lowering valve precisely adjustable via hand lever. Platform 50 mm high. 2 castor and 2 fixed wheels, wheels with polyurethane tyres, castor wheels with lock.

6831

Tilttable tubular push handle.

6832

Tubular push handle fixed with screws.

6833 | 6834 | 6835

Tubular push handle fixed with screws.

6836 | 6837

Double shears for enlarged lifting range. Tubular push handle fixed with screws.

Accessories

For platform size 1010 x 520 mm: (6833/6834/6835/6836/6837)

Roller conveyor with attachable frame

Sectional steel frame with holding angles and 2 upward tilting stops, powder coated blue RAL 5007. 9 steel rolls (Ø 57 mm and length 430 mm) with roller bearings.

Distance between axles 112,5 mm, height 64 mm, carrying capacity 500 kg – rigid –

Roller conveyor with live ring

Can be fixed to platform with clamped joint, swivelling by 360°, arrestable. 6 steel rolls (Ø 57 mm and length 430 mm) with roller bearings. Distance between axles: 110 mm Height 92 mm Carrying capacity 500 kg – swivelling –

Warranty

for lifting table carts 2 years.



6833 | 6834 | 6835



6836 | 6837



Roller conveyor with attachable frame.

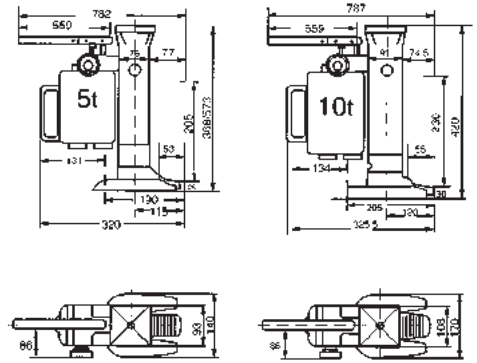


Roller conveyor with live ring.

	Order no.	Capacity kg	Lifting range mm	Platform L x W mm	Outside dimension L x W mm	Wheel-Ø mm	Net weight kg
Lifting table carts	6831	150	265–755	700 x 450	930 x 450	100	41
	6832	250	330–910	830 x 500	1020 x 500	125	78
	6833	500	435–1000	1010 x 520	1275 x 520	150	118
	6834	750	442–1000	1010 x 520	1275 x 520	150	120
	6835	1000	445–950	1010 x 520	1275 x 520	150	137
	6836	300	435–1585	1010 x 520	1275 x 520	150	150
	6837	500	440–1575	1010 x 520	1275 x 520	150	168
Roller conveyor with attachable frame	6890	500	-	-	-	-	31
Roller conveyor with live ring	6891	500	-	-	-	-	51

**6931/6932
Machine lifter**

Hydraulic, for lifting of machines and other heavy loads. Easy lifting with lifting claw and end plate by means of installed hydraulic hand pump. Precise lowering via lowering valve, overload valve. Pump lever detachable. Swivelling of housing by 360°, variable range of application. Sturdy compact steel construction, coating blue RAL 5007.



6931 | 6932 Machine lifter

**6943 | 6944 | 6945
Transport roller**

For the easy and safe transport of heavy goods such as containers, boxes, machines etc. Sturdy welded steel construction with handles made of round or tubular steel, powder coated blue RAL 5007. Carrying platforms with anti-slip rubber cover. Big nylon rolls with roller bearings. High carrying capacity combined with low net weight.



6943 Transport roller



6944 Transport roller



6945 Transport roller

	Order no.	Carrying capacity to	Lifting range at lifting claw mm	Lifting range at end plate mm	Net weight kg
Machine lifters	6931	5	25-230	368-573	25
	6932	10	30-260	420-650	35

	Order no.	Carrying capacity kg	Carrying platform L x W mm	Outside dimension L x W x H mm	Axles	Rolls	Size of rolls Ø x W mm	Net weight kg
Transport rollers	6943	2500	210 x 100	275 x 120 x 100	2	2	85 x 90	4
	6944	3000	330 x 220	400 x 228 x 100	2	4	85 x 85	9,5
	6945	6000	260 x 200	415 x 210 x 100	3	6	85 x 85	12

Warranty
for machine lifters and transport rollers 2 years.



6951



6952



6953



6956



6957



6958

6951 | 6952
Moving gear, adjustable

for the easy and safe transport of machines and other heavy goods. Sturdy welded steel construction with handles made of round steel, powder coated blue RAL 5007. Carrying platforms with anti-slip rubber cover. Big nylon rolls with roller bearings.

6953

As 6951/6952, but with a traction eye at the shaft.

Adjustable range:

- 6951 = 500–1190 mm
- 6952 = 700–1190 mm
- 6953 = 850–1190 mm

Scope of delivery:

- 2 transport rollers and
- 2 connecting rods made of round steel

6956 | 6957 | 6958
Moving gear, steerable

as adjustable moving gear, but with additional swivelling carrying platform and drawing shaft.

6957

With a traction eye at the shaft.

6958

With a traction eye at the shaft. Big steel wheels with ball bearings.

Scope of delivery:

- 1 transport roller with swivelling platform and drawing shaft.

	Order no.	Capacity to	Carrying platform L x W mm	Outside dimension L x W x H mm	Axles	Rolls	Size of rolls Ø x W mm	Net weight kg
Moving gears, adjustable	6951	6	250 x 200	320 x 268 x 110	4	8	85 x 90	30
	6952	12	350 x 200	420 x 268 x 110	4	12	85 x 90	38
	6953	24	425 x 220	495 x 288 x 110	4	16	83 x 85	88
Moving gears, steerable	6956	3	185 x 150	300 x 200 x 104	2	4	85 x 90	15
	6957	6	400 x 220	640 x 534 x 115	2	8	85 x 90	50
	6958	12	400 x 220	640 x 566 x 115	2	8	83 x 85	66

Warranty
for moving gears 2 years.



**Dollies for furniture
2350 | 2352**

With platform made of beech plywood, with non-slip coating. 4 swivel castors with polyamide wheels 100 mm Ø.

VE = packing unit = 2 pieces

2351 | 2353

As 2350 | 2352, but with 4 swivel castors, wheels with solid rubber tyres 100 mm Ø.

VE = packing unit = 2 pieces

2358

Dollies for furniture with platform made of plywood, with non-slip coating. 4 swivel castors, wheels with solid rubber tyres 125 mm Ø, blue-grey "trackless".

2359

Dollies for furniture with platform made of plywood, non-slip. 4 swivel castors with polyamide wheels 125 mm Ø.

6980

Furniture lifting rollers

Manual crank for one man transport of cupboards, lockers etc.

Steel tubular construction, powder coated blue RAL 5007. Winch with manual crank arm. Crank protected by a C-profile. Adjustable supports with protective covering. Loading surface with anti-slip covering, lowered 10 mm high.

Two steering wheels with non-marking polyurethane tyres and non-tracking elasticated solid rubber tyres, hub with roller bearings. One fixed 5 m long strap. Delivered in pairs.



2350 | 2352



2351 | 2353



2358



2359



6980



Function



	Order no.	Capacity kg	Length mm	Width mm	Height mm	Polyamide tyres mm	Solid rubber tyres mm	Net weight kg
Dollies for furniture	2350	350	600	300	140	100 x 30	-	4,5
	2351	250	600	300	140	-	100 x 38	5
	2352	500	600	350	140	100 x 30	-	5,5
	2353	300	600	350	140	-	100 x 38	6
	2358	500	800	600	175	-	125 x 38	10
	2359	600	800	600	175	125 x 40	-	10
	Order no.	Capacity per set kg	Stroke mm	Outside dimensions L x W x H mm	Platform W x D mm	Wheel size Ø x W mm	Net weight per set kg	
Furniture lifting rollers	6980	600	300	600 x 390 x 800	300 x 110	160 x 50	45	