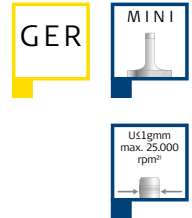
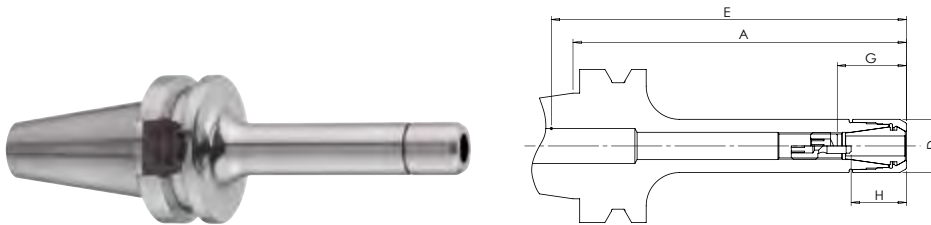


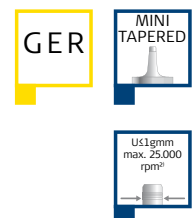
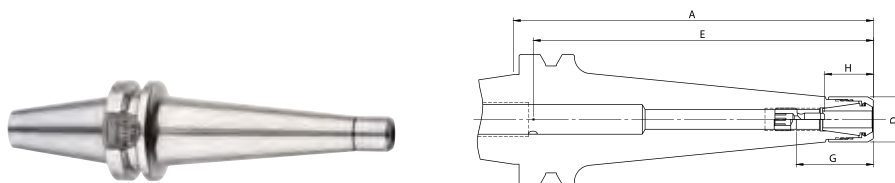
Collet Chucks with Taper Shanks JIS B 6339 – MAS/BT30 (AD)



CENTROJP – Slim Version for HPCM Mini Clamping Nuts

Description	Order-No.	Form	D	A ¹⁾	max. tool insertion depth without stop	Tool insertion depth with stop				Clamping Range / Collets	Clamping Nuts
						Type U		Type W			
						G max.	G min.	H max.	H min.		
CP8M-BT30-A=75	43163000750	AD	10	75	75	-	-	-	-	1,0–5,0 GERC8-HP	HPC8M
CP11M-BT30-A=50	43263000500					32	18	22	12	1,0–7,0 GERC11-HP/HPD	HPC11M• HPC11M-DI
CP11M-BT30-A=100	43263001000					36	18	26	12		

Accessories: Clamping Nuts pages 58, 59, Wrenches pages 63, 64, Mounting Devices page 64, Precision Collets pages 65, 66, Stop Screws page 72, Taper Wipers page 73, Flex-Hone Brushes page 73, Pull Studs pages 76, 77



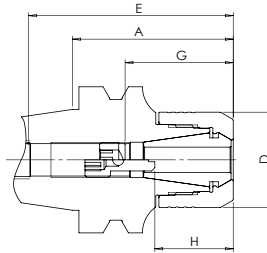
CENTROJP – Tapered Version for HPCM Mini Clamping Nuts

Description	Order-No.	Form	D	A ¹⁾	max. tool insertion depth without stop	Tool insertion depth with stop				Clamping Range / Collets	Clamping Nuts
						Type U		Type W			
						G max.	G min.	H max.	H min.		
CPC11M-BT30-A=130	43263001300	AD	16	130	130	29	19	19	13	1,0–7,0 GERC11-HP/HPD	HPC11M• HPC11M-DI
CPC11M-BT30-A=160	43263001600			160	160						

Accessories: Clamping Nuts pages 58, 59, Wrenches pages 63, 64, Mounting Devices page 64, Precision Collets pages 65, 66, Stop Screws page 72, Taper Wipers page 73, Flex-Hone Brushes page 73, Pull Studs pages 76, 77

¹⁾ Dimension A applies to Clamping Nuts without Sealing Discs. For Clamping Nuts with Sealing Discs see dimension A¹⁾ under Clamping Nuts on page 58
²⁾ Bitte die Hinweise auf Seite 80 ff zum Thema Wuchten beachten. Die max. Drehzahl ist von der Länge and vom Gewicht des Futters abhängig

Collet Chucks with Taper Shanks JIS B 6339 – MAS/BT30 (AD)



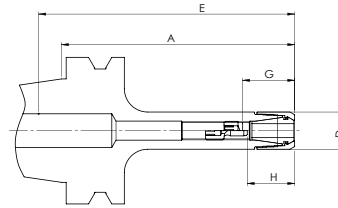
CENTROJP – Version for HPC Clamping Nuts

Description	Order-No.	Form	D	A ¹⁾	max. tool insertion depth without stop	Tool insertion depth with stop				Clamping Range / Collets	Clamping Nuts	
						Type U		Type W				
						G max.	G min.	H max.	H min.			
CP16-BT30-A=50	44363000500	AD	30	50	73	44	28	31	16	1,0–10,0 GERC16-HP/HPD/GBD	HPC16• HPC16-DI	
CP16-BT30-A=60	44363000600			60	82	45	28	31	14			
CP16-BT30-A=75	44363000750			75	97							
CP16-BT30-A=90	44363000900			90	112	44						16
CP16-BT30-A=100	44363001000			100	123							
CP16-BT30-A=120	44363001200			120	112	45						
CP20-BT30-A=75	44463000750		32	75	65	47				31	-	
CP25-BT30-A=60	44563000600		40	60	77	59	35	42	30	1,0–16,0 GERC25-HP/HPD/GBD	HPC25• HPC25-DI	
CP25-BT30-A=75	44563000750			75	72	56	38	39	23			
CP25-BT30-A=90	44563000900			90	87							
CP25-BT30-A=120	44563001200			120	115							
CP32-BT30-A=60	44663000600			50	60	69						52
CP32-BT30-A=75	44663000750	75	84		62	42				45	24	
CP32-BT30-A=90	44663000900	90	94									

Accessories: Clamping Nuts pages 60, 62, Wrenches pages 63, 64, Mounting Devices page 64, Precision Collets pages 65 - 67, Tap Collets pages 68, 69, Sealing Discs page 71, Stop Screws page 72, Taper Wipers page 73, Flex-Hone Brushes page 73, Pull Studs pages 76, 77

¹⁾ Dimension A applies to Clamping Nuts without Sealing Discs. For Clamping Nuts with Sealing Discs see dimension A¹⁾ under Clamping Nuts on page 60 and 62
²⁾ Please refer to page 80 onwards regarding the subject of balancing. The max. rpm is depending on the length and the weight of each chuck.

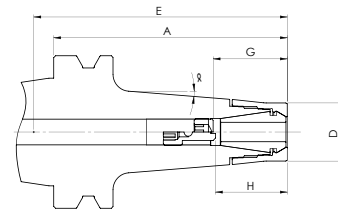
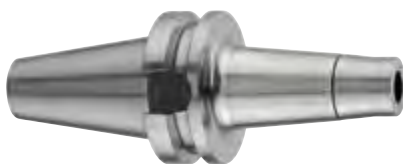
Collet Chucks with Taper Shanks JIS B 6339 – MAS/BT40 (AD|AD/B)



CENTRO|P – Slim Version for HPCM Mini Clamping Nuts

Description	Order-No.	Form	D	A ¹⁾	max. tool insertion depth without stop	Tool insertion depth with stop				Clamping Range / Collets	Clamping Nuts
						Type U		Type W			
						G max.	G min.	H max.	H min.		
CP11M-BTB40-A=75	43264000750	AD/B	16	75	85	30	15	21	8	1,0–7,0 GERC11-HP/HPD	HPC11M• HPC11M-DI
CP11M-BTB40-A=100	43264001000			100	110	36	18	26	12		
CP11M-BTB40-A=120	43264001200			120	130	30	15	21	8		
CP11M-BTB40-A=160	43264001600			160	170	36	18	26	12		
CP16M-BTB40-A=75	43364000750		22	75	100	49	27	32	16	1,0–10,0 GERC16-HP/HPD/GBD	HPC16MS• HPC16MS-DI
CP16M-BTB40-A=90	43364000900			90	115						
CP16M-BTB40-A=120	43364001200			120	145						
CP16M-BTB40-A=150	43364001500			150	175						

Accessories: Clamping Nuts pages 58, 59, Wrenches pages 63, 64, Mounting Devices page 64, Precision Collets pages 65 - 67, Tap Collets pages 68, 69, Sealing Discs page 71, Stop Screws page 72, Taper Wipers page 73, Flex-Hone Brushes page 73, Pull Studs pages 76, 77



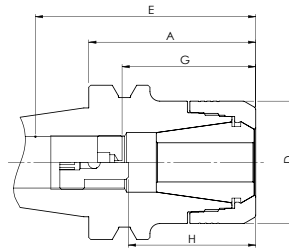
CENTRO|P – Tapered Version for HPCC Special Clamping Nuts

Description	Order-No.	Form	D	A ¹⁾	α	max. tool insertion depth without stop	Tool insertion depth with stop				Clamping Range / Collets	Clamping Nuts
							Type U		Type W			
							G max.	G min.	H max.	H min.		
CPC16-BTB40-A=100	44364401000	AD/B	24	100	4,5	110	48	28	35	20	1,0–10,0 GERC16-HP/ HPD/GBD	HPC16C• HPC16C-DI
CPC16-BTB40-A=160	44364401600			160								

Accessories: Clamping Nuts page 59, Wrenches pages 63, 64, Mounting Devices page 64, Precision Collets pages 65 - 67, Tap Collets pages 68, 69, Sealing Discs page 71, Stop Screws page 72, Taper Wipers page 73, Flex-Hone Brushes page 73, Pull Studs pages 76, 77

¹⁾ Dimension A applies to Clamping Nuts without Sealing Discs. For Clamping Nuts with Sealing Discs see dimension A¹⁾ under Clamping Nuts on pages 58 and 59
²⁾ Please refer to page 80 onwards regarding the subject of balancing. The max. rpm is depending on the length and the weight of each chuck.

Collet Chucks with Taper Shanks JIS B 6339 – MAS/BT40 (AD|AD/B)



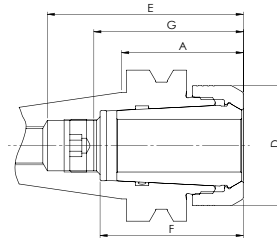
CENTROJP – Version for HPC Clamping Nuts

Description	Order-No.	Form	D	A ¹⁾	max. tool insertion depth without stop	Tool insertion depth with stop				Clamping Range / Collets	Clamping Nuts										
						Type U		Type W													
						G max.	G min.	H max.	H min.												
CP16-BT40-A=70	44365000700	AD	30	70	110	45	28	31	16	1,0–10,0 GERC16-HP/HPD/GBD	HPC16• HPC16-DI										
CP16-BTB40-A=70	44364000700	AD/B		100	138																
CP16-BT40-A=100	44365001000	AD										120	140								
CP16-BTB40-A=100	44364001000	AD/B												160	198						
CP16-BTB40-A=120	44364001200															200	238				
CP16-BTB40-A=160	44364001600																				
CP16-BTB40-A=200	44364002000																				
CP20-BTB40-A=75	44464000750	AD/B	32	75	76	57	31	-	-	1,0–13,0 GERC20-HP/HPD/GBD	HPC20• HPC20-DI										
CP20-BTB40-A=120	44464001200	AD/B		120	105																
CP25-BTB40-A=55	44564000550	AD/B	40	55	93	60	44	-	24	1,0–16,0 GERC25-HP/HPD/GBD	HPC25• HPC25-DI										
CP25-BT40-A=70	44565000700	AD		70	110																
CP25-BTB40-A=70	44564000700	AD/B										100	100								
CP25-BT40-A=100	44565001000	AD												120	116						
CP25-BTB40-A=100	44564001000	AD/B														160	116				
CP25-BTB40-A=120	44564001200																	200	146		
CP25-BTB40-A=160	44564001600																				
CP25-BTB40-A=200	44564002000																				
CP32-BTB40-A=55	44664000550	AD/B	50	55	90	70	52	61	35	2,0–20,0 GERC32-HP/HPD/GBD	HPC32• HPC32-DI										
CP32-BT40-A=70	44665000700	AD		70	100																
CP32-BTB40-A=70	44664000700	AD/B										100	113								
CP32-BT40-A=100	44665001000	AD												120	110						
CP32-BTB40-A=100	44664001000	AD/B														160	129				
CP32-BTB40-A=120	44664001200																	70	42	52	32
CP32-BTB40-A=160	44664001600																				
CP40-BT40-A=70	44765000700	AD	63	70	90	58	48	-	-	3,0–26,0 GERC40-HP/HPD/GBD	HPC40• HPC40-DI										
CP40-BT40-A=100	44765001000			100	120							65									

Accessories: Clamping Nuts pages 60, 62, Wrenches pages 63, 64, Mounting Devices page 64, Precision Collets pages 65 - 67, Tap Collets pages 68, 69, Sealing Discs page 71, Stop Screws page 72, Taper Wipers page 73, Flex-Hone Brushes page 73, Pull Studs pages 76, 77

¹⁾ Dimension A applies to Clamping Nuts without Sealing Discs. For Clamping Nuts with Sealing Discs see dimension A¹⁾ under Clamping Nuts on pages 60 and 62
²⁾ Please refer to page 80 onwards regarding the subject of balancing. The max. rpm is depending on the length and the weight of each chuck.

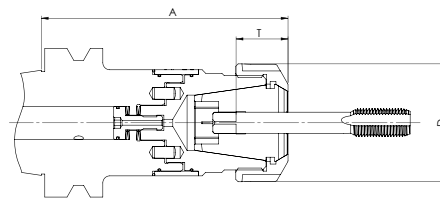
Collet Chucks with Taper Shanks JIS B 6339 – MAS/BT40 (AD/B)



CENTROJP – Version for HPC Clamping Nuts

Description	Order-No.	Form	D	A ¹⁾	max. tool insertion depth without stop		Tool insertion depth with stop				Clamping Range / Collets	Clamping Nuts
					E ²⁾	F ²⁾	Type U		Type W			
							G max.	G min.	H max.	H min.		
CP225DG-BTB40-A=48	48464000480	AD/B	50	48	89	59	62	56	-	-	2,0–25,0 FM25DG-HP	HPC225• HPC225-DIG

Accessories: Clamping Nuts page 61, Wrenches pages 63, 64, Mounting Devices page 64, Precision Collets page 70, Sealing Discs page 71, Stop Screws page 72, Taper Wipers page 73, Flex-Hone Brushes page 73, Pull Studs pages 76, 77



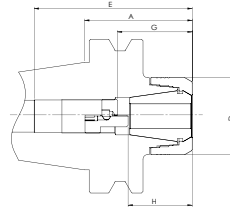
SYNCHROIT

Description	Order-No.	Form	D	A	Tap insertion depth T				Cutting range	Collets
					Shank-ø 2,8-7,1	Shank-ø 8-9	Shank-ø 10-16	Shank-ø 18-25		
ST16-GB-BTB40-A=84	52364000840	AD/B	30	84	18	22	25	-	M3–M12	GERC16-GBD
ST20-GB-BTB40-A=85	52464000850		32	85				-	M3–M16	GERC20-GBD
ST25-GB-BTB40-A=89	52564000890		40	89				30	M3–M20	GERC25-GBD
ST32-GB-BTB40-A=110	52664001100		50	110				33	M4–M27	GERC32-GBD
ST40-GB-BTB40-A=115	52764001150		63	115					M4–M33	GERC40-GBD

Accessories: Wrenches pages 63, 64, Mounting Devices page 64, Tap Collets pages 68, 69, Taper Wipers page 73, Flex-Hone Brushes page 73, Pull Studs pages 76, 77

¹⁾ Dimension A applies to Clamping Nuts without Sealing Discs. For Clamping Nuts with Sealing Discs see dimension A¹⁾ under Clamping Nuts on page 61
²⁾ Dimension E is for tool shanks ≤ 20 mm and dimension F is for tool shanks > 20 mm
³⁾ Please refer to page 80 onwards regarding the subject of balancing. The max. rpm is depending on the length and the weight of each chuck.

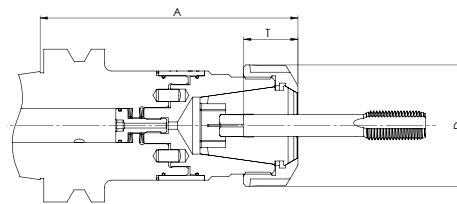
Collet Chucks with Taper Shanks JIS B 6339 – MAS/BT50 (AD|AD/B)



CENTRO|P – Version for HPC Clamping Nuts

Description	Order-No.	Form	D	A ¹⁾	max. tool insertion depth without stop	Tool insertion depth with stop				Clamping Range / Collets	Clamping Nuts
						Type U		Type W			
						G max.	G min.	H max.	H min.		
CP16-BT50-A=105	44367001050	AD	30	105	105	43	29	-	-	1,0–10,0 GERC16-HP/HPD/GBD	HPC16• HPC16-DI
CP16-BT50-A=135	44367001350			135	135						
CP25-BT50-A=105	44567001050			105	105						
CP25-BT50-A=135	44567001350		40	135	135	64	38	46	36	1,0–16,0 GERC25-HP/HPD/GBD	HPC25• HPC25-DI
CP25-BT50-A=165	44567001650			165	165						
CP32-BT50-A=70	44667000700			70	90						
CP32-BTB50-A=100	44666001000	AD/B	50	100	150	70	53	63	35	2,0–20,0 GERC32-HP/HPD/GBD	HPC32• HPC32-DI
CP32-BT50-A=135	44667001350	AD		135	135	70	45	52	42		
CP32-BTB50-A=160	44666001600	AD/B		160	200	80	53	60	35		
CP40-BT50-A=70	44767000700	AD	63	70	120	48	55	-	-	3,0–26,0 GERC40-HP/HPD/GBD	HPC40• HPC40-DI
CP40-BT50-A=100	44767001000			100	150		70				

Accessories: Clamping Nuts pages 60, 62, Wrenches pages 63, 64, Mounting Devices page 64, Precision Collets pages 65 - 67, Tap Collets pages 68, 69, Sealing Discs page 71, Stop Screws page 72, Taper Wipers page 73, Flex-Hone Brushes page 73, Pull Studs pages 76, 77



SYNCHRO|T

Description	Order-No.	Form	D	A	Tap insertion depth T				Cutting range	Collets
					Shank-ø 2,8–7,1	Shank-ø 8–9	Shank-ø 10–16	Shank-ø 18–25		
ST16-GB-BTB50-A=99	52366000990	AD/B	30	99	18	22	25	-	M3–M12	GERC16-GBD
ST20-GB-BTB50-A=100	52466001000		32	100				-	M3–M16	GERC20-GBD
ST25-GB-BTB50-A=104	52566001040		40	104				30	M3–M20	GERC25-GBD
ST32-GB-BTB50-A=120	52666001200		50	120				33	M4–M27	GERC32-GBD
ST40-GB-BTB50-A=120	52766001200		63	120					M4–M33	GERC40-GBD

Accessories: Wrenches pages 63, 64, Mounting Devices page 64, Tap Collets pages 68, 69, Taper Wipers page 73, Flex-Hone Brushes page 73, Pull Studs pages 76, 77

¹⁾ Dimension A applies to Clamping Nuts without Sealing Discs. For Clamping Nuts with Sealing Discs see dimension A¹⁾ under Clamping Nuts on pages 60 and 62
²⁾ Please refer to page 80 onwards regarding the subject of balancing. The max. rpm is depending on the length and the weight of each chuck.