

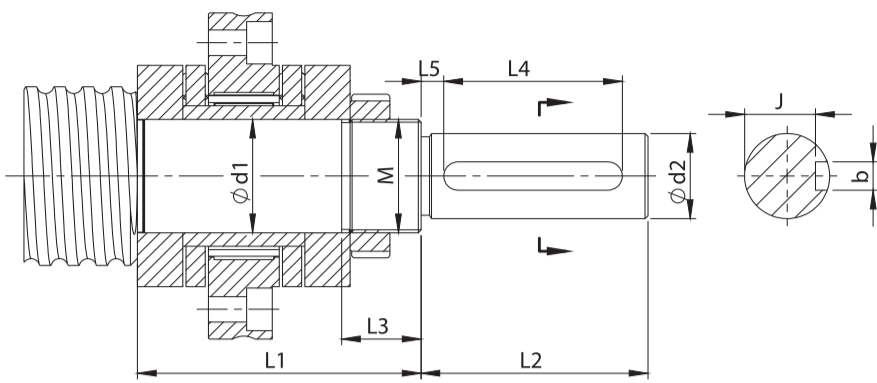
# STANDARD BALLSCREW AND MACHINING



**KSK Precise Motion, a.s.**  
We always have the right solution

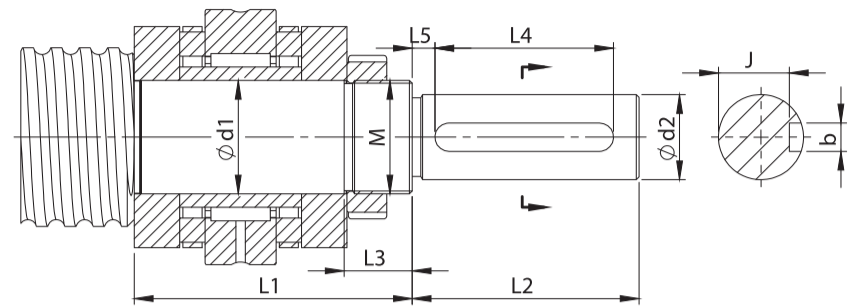


## HKF



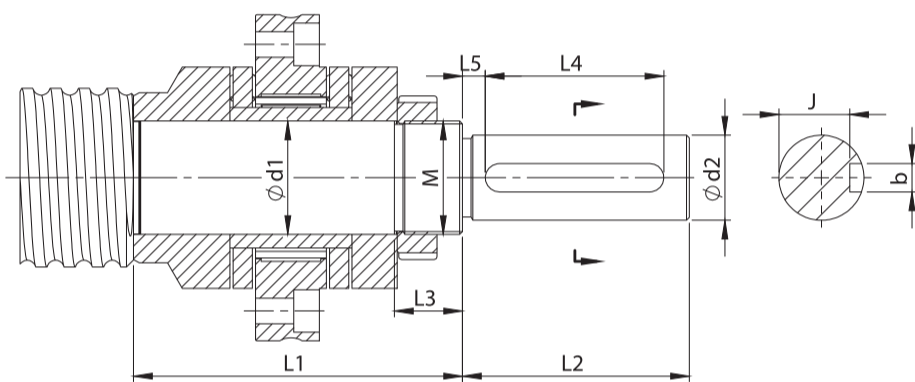
Screw end machining for LKSF bearing

## HKN



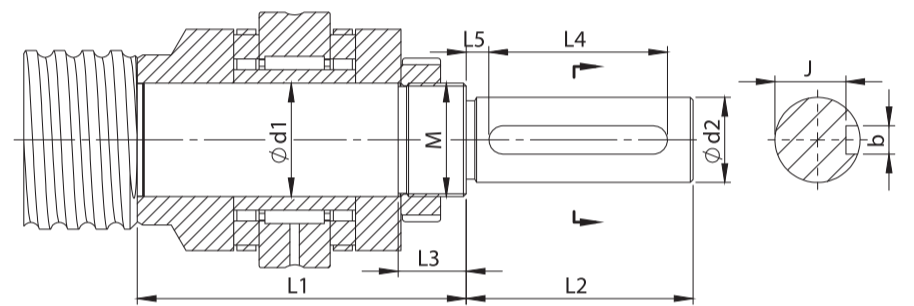
Screw end machining for LKSN bearing

## HKF - L



Screw end machining for LKSF-L bearing

## HKN - L



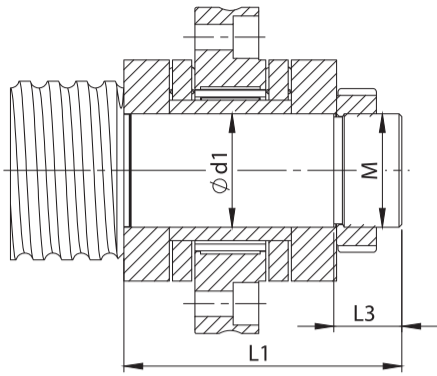
Screw end machining for LKSN-L bearing

Designation	Key-way(*)	Ballscrew type	Bearing type	d1 j6	d2 h6	L1	L2	L3	L4	L5	J	bP9	M	Tightening nut
<b>HKN 15</b>	1/0	<b>K25</b>	LKSN 1545	15	12	57	25	18	16	3	9,5	4	M 15x1	ZM 15
<b>HKN-L 15</b>	1/0		LKSN-L 1545	15	12	70	25	18	16	3	9,5	4	M 15x1	ZM 15
<b>HKF 15</b>	1/0		LKSF 1560	15	12	57	25	18	16	3	9,5	4	M 15x1	ZM 15
<b>HKF-L 15</b>	1/0		LKSF-6 1560	15	12	70	25	18	16	3	9,5	4	M 15x1	ZM 15
<b>HKN 20</b>	1/0	<b>K32</b>	LKSN 2052	20	15	65	30	20	22	4	12	5	M 20x1	ZM 20
<b>HKN-L 20</b>	1/0		LKSN-L 2052	20	15	79	30	20	22	4	12	5	M 20x1	ZM 20
<b>HKF 20</b>	1/0		LKSF 2068	20	15	65	30	20	22	4	12	5	M 20x1	ZM 20
<b>HKF-L 20</b>	1/0		LKSF-L 2068	20	15	79	30	20	22	4	12	5	M 20x1	ZM 20
<b>HKN 25</b>	1/0	<b>K40</b>	LKSN 2557	25	20	71	40	22	28	5	16,5	6	M 25x1,5	ZM 25
<b>HKN-L 25</b>	1/0		LKSN-L 2557	25	20	81	40	22	28	5	16,5	6	M 25x1,5	ZM 25
<b>HKF 25</b>	1/0		LKSF 2575	25	20	71	40	22	28	5	16,5	6	M 25x1,5	ZM 25
<b>HKF-L 25</b>	1/0		LKSF-L 2575	25	20	86	40	22	28	5	16,5	6	M 25x1,5	ZM 25
<b>HKN 35</b>	1/0	<b>K50</b>	LKSN 3585	35	25	89	60	24	40	8	20,8	8	M 35x1,5	ZM 35
<b>HKN-L 35</b>	1/0		LKSN-L 3585	35	25	105	60	24	40	8	20,8	8	M 35x1,5	ZM 35
<b>HKF 35</b>	1/0		LKSF 35110	35	25	89	60	24	40	8	20,8	8	M 35x1,5	ZM 35
<b>HKF-L 35</b>	1/0		LKSF-L 35110	35	25	105	60	24	40	8	20,8	8	M 35x1,5	ZM 35
<b>HKN 40</b>	1/0	<b>K63</b>	LKSN 4090	40	30	98	80	24	63	8	25	10	M 40x1,5	ZM 40
<b>HKN-L 40</b>	1/0		LKSN-L 4090	40	30	116	80	24	63	8	25	10	M 40x1,5	ZM 40
<b>HKF 40</b>	1/0		LKSF 40115	40	30	98	80	24	63	8	25	10	M 40x1,5	ZM 40
<b>HKF-L 40</b>	1/0		LKSF-L 40115	40	30	116	80	24	63	8	25	10	M 40x1,5	ZM 40
<b>HKN 55</b>	1/0	<b>K80</b>	LKSN 55115	55	40	108	110	27	90	8	34,5	14	M 55x2	ZM 55
<b>HKN-L 55</b>	1/0		LKSN-L 55115	55	40	129	110	27	90	8	34,5	14	M 55x2	ZM 55
<b>HKF 55</b>	1/0		LKSF 55145	55	40	108	110	27	90	8	34,5	14	M 55x2	ZM 55
<b>HKF-L 55</b>	1/0		LKSF-L 55145	55	40	129	110	27	90	8	34,5	14	M 55x2	ZM 55
<b>HKN 75</b>	1/0	<b>K100</b>	LKSN 75155	75	60	131	140	32	110	12	53,2	18	M 75x2	ZM 75
<b>HKN-L 75</b>	1/0		LKSN-L 75155	75	60	156	140	32	110	12	53,2	18	M 75x2	ZM 75
<b>HKF 75</b>	1/0		LKSF 75185	75	60	131	140	32	110	12	53,2	18	M 75x2	ZM 75
<b>HKF-L 75</b>	1/0		LKSF-L 75185	75	60	156	140	32	110	12	53,2	18	M 75x2	ZM 75

Bearings mentioned are ZARN, ZARF bearing equivalents

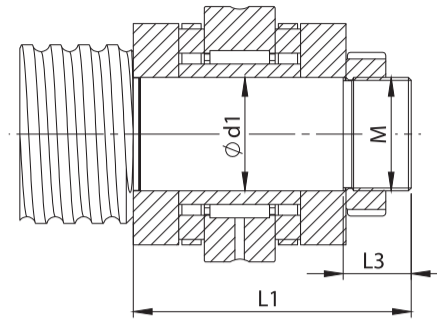
\*Code: HKN15-LKSN1545/1 standard end machining with a keyway for LKSN 1545 bearing  
HKN15-LKSN1545/0 standard end machining without a keyway for LKSN bearing

## HKF



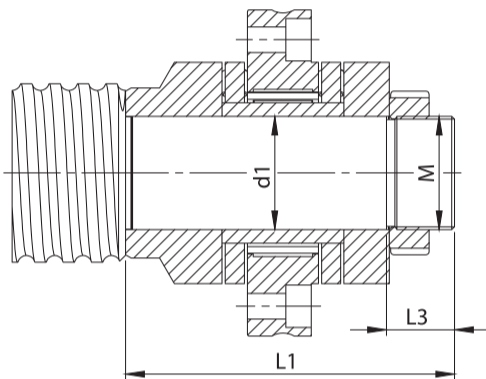
Screw end machining for LKSF bearing

## HKN



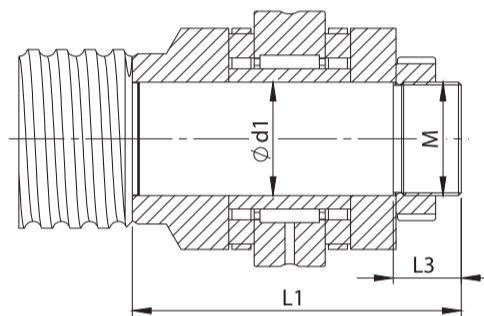
Screw end machining for LKSN bearing

## HKF - L



Screw end machining for LKSF-L bearing

## HKN - L

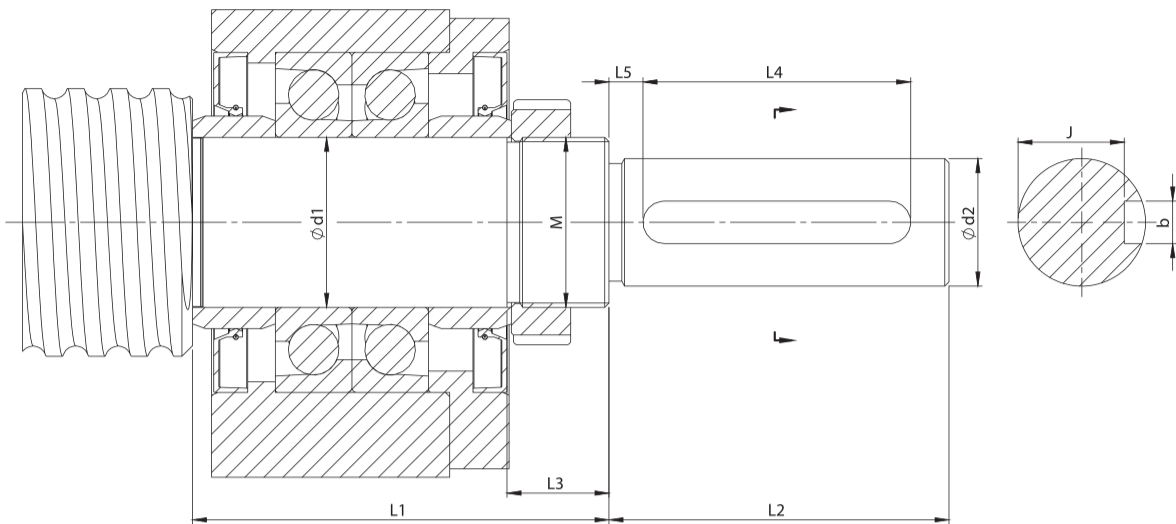


Screw end machining for LKSN-L bearing

Designation	Ball screw type	Bearing type	d1 j6	L1	L3	M	Tightening nut
<b>HKN 15</b>	<b>K25</b>	LKSN 1545	15	57	18	M 15x1	ZM 15
<b>HKN-L 15</b>		LKSN-L 1545	15	70	18	M 15x1	ZM 15
<b>HKF 15</b>		LKSF 1560	15	57	18	M 15x1	ZM 15
<b>HKF-L 15</b>		LKSF-6 1560	15	70	18	M 15x1	ZM 15
<b>HKN 20</b>	<b>K32</b>	LKSN 2052	20	65	20	M 20x1	ZM 20
<b>HKN-L 20</b>		LKSN-L 2052	20	79	20	M 20x1	ZM 20
<b>HKF 20</b>		LKSF 2068	20	65	20	M 20x1	ZM 20
<b>HKF-L 20</b>		LKSF-L 2068	20	79	20	M 20x1	ZM 20
<b>HKN 25</b>	<b>K40</b>	LKSN 2557	25	71	22	M 25x1,5	ZM 25
<b>HKN-L 25</b>		LKSN-L 2557	25	81	22	M 25x1,5	ZM 25
<b>HKF 25</b>		LKSF 2575	25	71	22	M 25x1,5	ZM 25
<b>HKF-L 25</b>		LKSF-L 2575	25	86	22	M 25x1,5	ZM 25
<b>HKN 35</b>	<b>K50</b>	LKSN 3585	35	89	24	M 35x1,5	ZM 35
<b>HKN-L 35</b>		LKSN-L 3585	35	105	24	M 35x1,5	ZM 35
<b>HKF 35</b>		LKSF 35110	35	89	24	M 35x1,5	ZM 35
<b>HKF-L 35</b>		LKSF-L 35110	35	105	24	M 35x1,5	ZM 35
<b>HKN 40</b>	<b>K63</b>	LKSN 4090	40	98	24	M 40x1,5	ZM 40
<b>HKN-L 40</b>		LKSN-L 4090	40	116	24	M 40x1,5	ZM 40
<b>HKF 40</b>		LKSF 40115	40	98	24	M 40x1,5	ZM 40
<b>HKF-L 40</b>		LKSF-L 40115	40	116	24	M 40x1,5	ZM 40
<b>HKN 55</b>	<b>K80</b>	LKSN 55115	55	108	27	M 55x2	ZM 55
<b>HKN-L 55</b>		LKSN-L 55115	55	129	27	M 55x2	ZM 55
<b>HKF 55</b>		LKSF 55145	55	108	27	M 55x2	ZM 55
<b>HKF-L 55</b>		LKSF-L 55145	55	129	27	M 55x2	ZM 55
<b>HKN 75</b>	<b>K100</b>	LKSN 75155	75	131	32	M 75x2	ZM 75
<b>HKN-L 75</b>		LKSN-L 75155	75	156	32	M 75x2	ZM 75
<b>HKF 75</b>		LKSF 75185	75	131	32	M 75x2	ZM 75
<b>HKF-L 75</b>		LKSF-L 75185	75	156	32	M 75x2	ZM 75

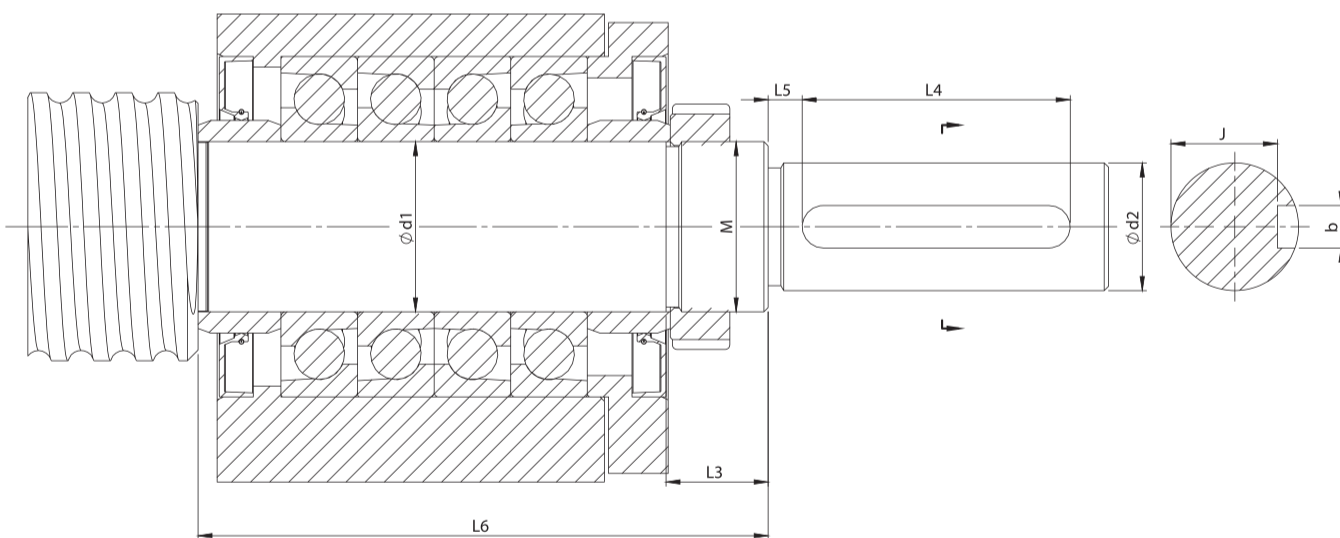
Bearings mentioned are ZARN, ZARF bearing equivalents

## HKH



Screw end machining with LPH bearing support

## HKHD

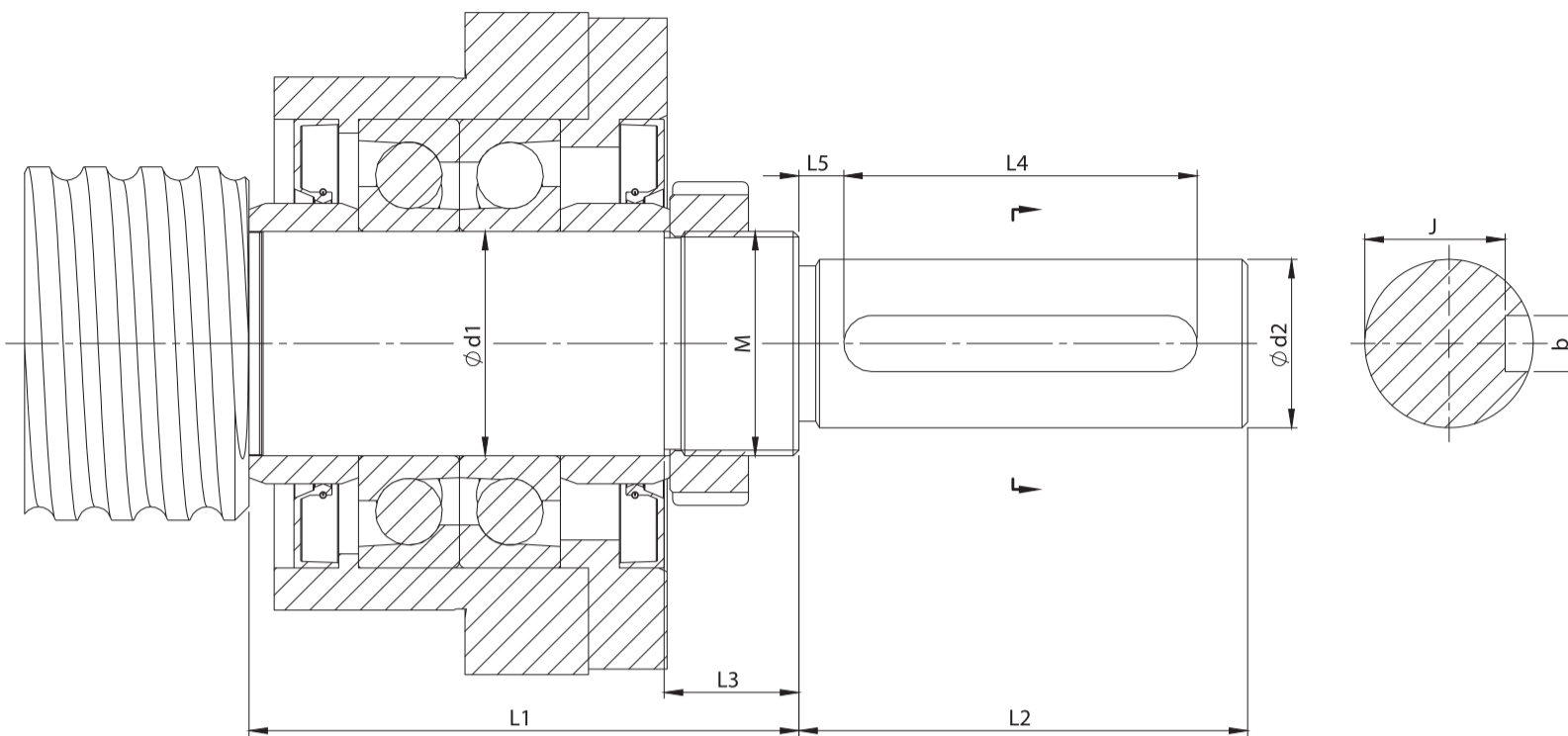


Screw end machining with LPHD bearing support

Designation	Key-way(*)	Ballscrew type	Bearing type	d1 js6	d2 h6	L1	L2	L3	L4	L5	L6	J	bP9	M	Tightening nut	Bearing support
<b>HKH 15, HKHD 15</b>	1/0	<b>K25</b>	7202	15	12	68	25	18	16	3	90	9,5	4	M 15x1	ZM 15	LPH 15, LPHD 15
<b>HKH 20, HKHD 20</b>	1/0	<b>K32</b>	7204	20	15	76	30	20	22	4	104	12	5	M 20x1	ZM 20	LPH 20, LPHD 20
<b>HKH 25, HKHD 25</b>	1/0	<b>K40</b>	7205	25	20	84	40	22	28	5	114	16,5	6	M 25x1,5	ZM 25	LPH 25, LPHD 25
<b>HKH 35, HKHD 35</b>	1/0	<b>K50</b>	7206	35	25	96	60	24	40	8	130	20,8	8	M 35x1,5	ZM 35	LPH 35, LPHD 35
<b>HKH 40, HKHD 40</b>	1/0	<b>K63</b>	7207	40	30	98	98	24	63	8	134	25	10	M 40x1,5	ZM 40	LPH 40, LPHD 40

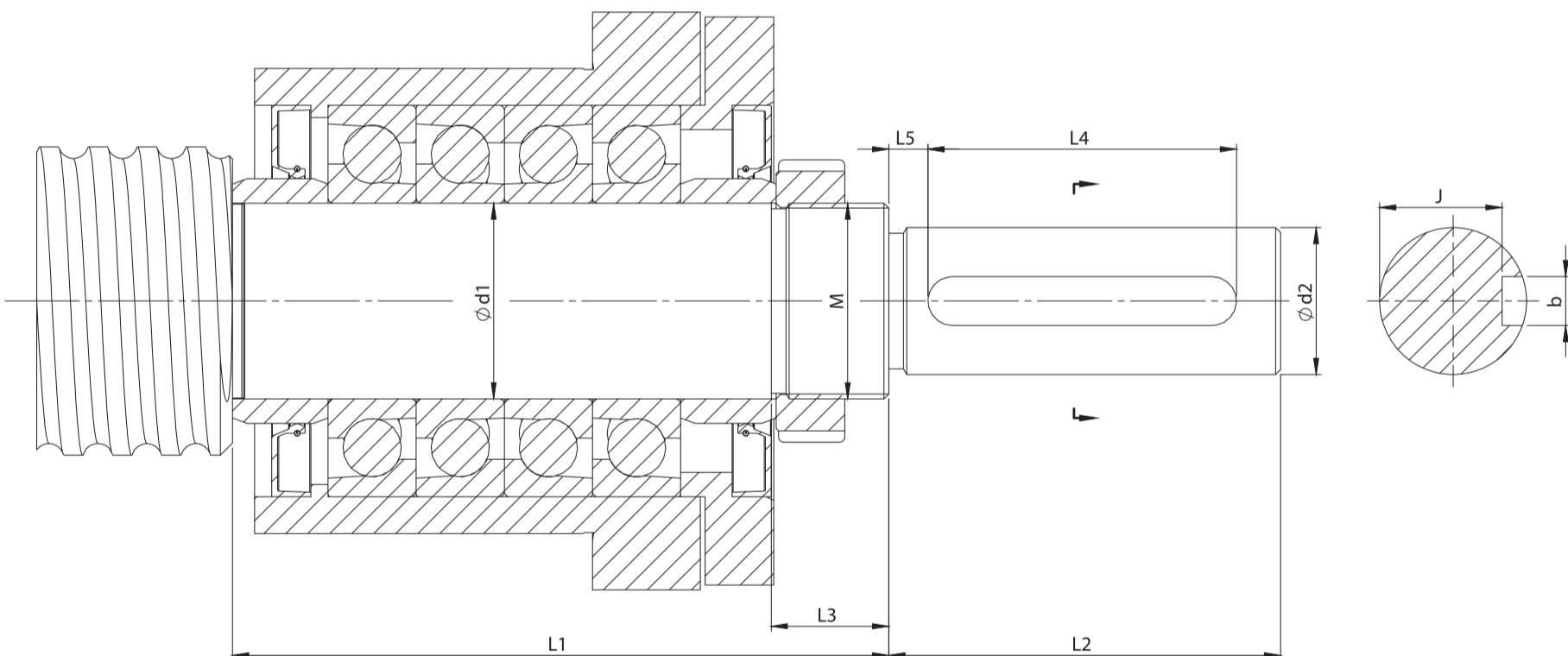
\*Code: HKN15-LKSN1545/1 standard end machining with a keyway for LKSN 1545 bearing  
 HKN15-LKSN1545/0 standard end machining without a keyway for LKSN bearing

## HKE



Screw end machining with LPE bearing support

## HKED

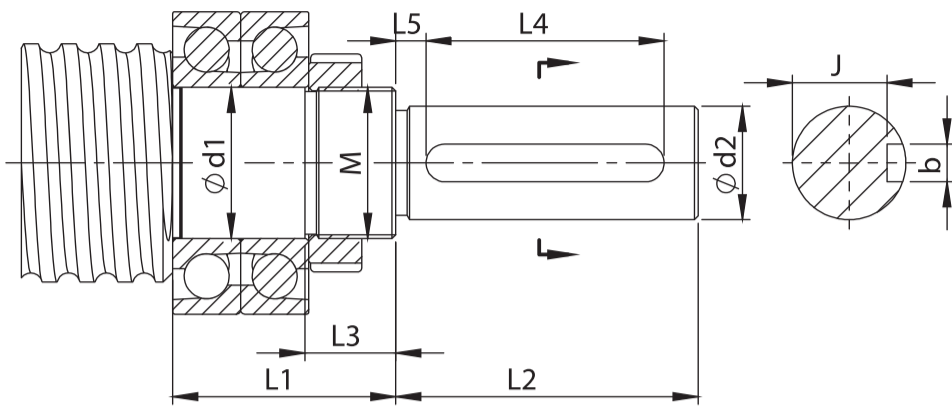


Screw end machining with LPED bearing support

Designation	Key-way(*)	Ballscrew type	Bearing type	d1 js6	d2 h6	L1	L2	L3	L4	L5	L6	J	bP9	M	Tightening nut	Bearing support
<b>HKE 15, HKED 15</b>	1/0	<b>K25</b>	<b>7202</b>	15	12	68	25	18	16	3	90	9,5	4	M 15x1	ZM 15	LPE 15, LPED 15
<b>HKE 20, HKED 20</b>	1/0	<b>K32</b>	<b>7204</b>	20	15	76	30	20	22	4	104	12	5	M 20x1	ZM 20	LPE 20, LPED 20
<b>HKE 25, HKED 25</b>	1/0	<b>K40</b>	<b>7205</b>	25	20	84	40	22	28	5	114	16,5	6	M 25x1,5	ZM 25	LPE 25, LPED 25
<b>HKE 35, HKED 35</b>	1/0	<b>K50</b>	<b>7207</b>	35	25	96	60	24	40	8	130	20,8	8	M 35x1,5	ZM 35	LPE 35, LPED 35
<b>HKE 40, HKED 40</b>	1/0	<b>K63</b>	<b>7208</b>	40	30	98	98	24	63	8	134	25	10	M 40x1,5	ZM 40	LPE 40, LPED 40

\*Code: HKN15-7202/1 standard end machining with a keyway for 7202 bearing  
HKN15-7202/0 standard end machining without a keyway for 7202 bearing

## HKI

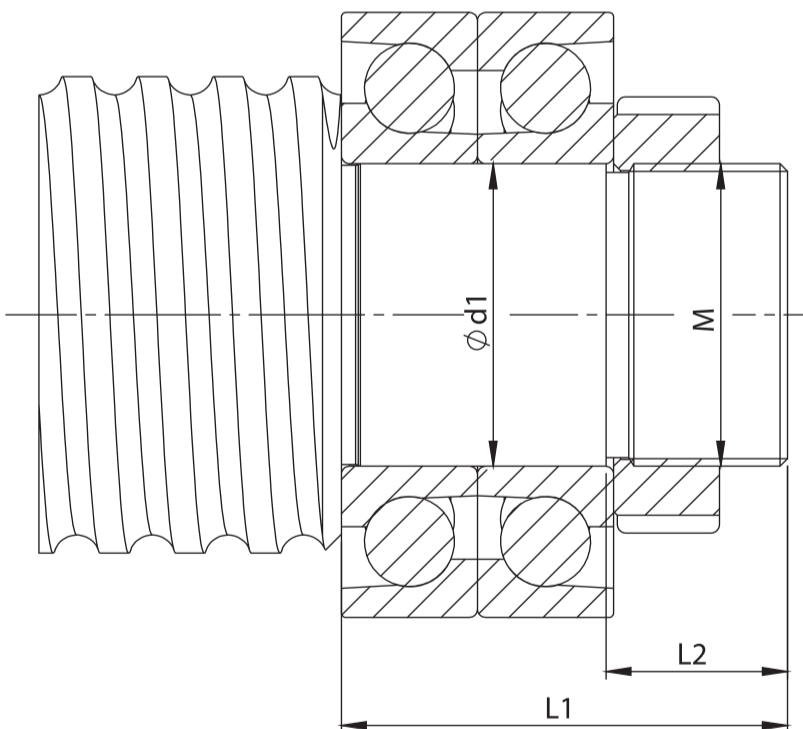


Screw end machining with an angular contact bearing

Designation	Key-way(*)	Ballscrew type	Bearing type	d1 js6	d2 h6	L1	L2	L3	L4	L5	J	bP9	M	Tightening nut
<b>HKI 15</b>	1/0	<b>K25</b>	7202	15	12	39	25	18	16	3	9,5	4	M 15x1	ZM 15
<b>HKI 20</b>	1/0	<b>K32</b>	7204	20	15	47	30	20	22	4	12	5	M 20x1	ZM 20
<b>HKI 25</b>	1/0	<b>K40</b>	7205	25	20	51	40	22	28	5	16,5	6	M 25x1,5	ZM 25
<b>HKI 35</b>	1/0	<b>K50</b>	7207	35	25	57	60	24	40	8	20,8	8	M 35x1,5	ZM 35
<b>HKI 40</b>	1/0	<b>K63</b>	7208	40	30	59	80	24	63	8	25	10	M 40x1,5	ZM 40
<b>HKI 55</b>	1/0	<b>K80</b>	7211	55	40	68	110	27	90	8	34,5	14	M 55x2	ZM 55
<b>HKI 75</b>	1/0	<b>K100</b>	7215	75	62	81	140	32	110	12	53,2	18	M 75x2	ZM 75

\*Code: HKN15-7202/1 standard end machining with a keyway for 7202 bearing  
HKN15-7202/0 standard end machining without a keyway for 7202 bearing

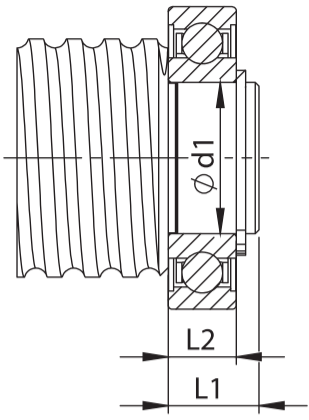
## HKJ



Screw end machining with an angular contact bearing

Designation	Ballscrew type	Bearing type	d1 j6	L1	L2	DIN 471	M	Tightening nut
<b>HKJ 15</b>	<b>K25</b>	7202	15	39	18	15x1,0	M 15x1	ZM 15
<b>HKJ 20</b>	<b>K32</b>	7204	20	47	20	20x1,2	M 20x1	ZM 20
<b>HKJ25</b>	<b>K40</b>	7205	25	51	22	25x1,2	M 25x1,5	ZM 25
<b>HKJ 35</b>	<b>K50</b>	7207	35	57	24	35x1,5	M 35x1,5	ZM 35
<b>HKJ 40</b>	<b>K63</b>	7208	40	59	24	40x1,75	M 40x1,5	ZM 40
<b>HKJ 55</b>	<b>K80</b>	7211	55	68	27	55x2,0	M 55x2	ZM 55
<b>HKJ 75</b>	<b>K100</b>	7215	75	81	32	75x2,5	M 75x2	ZM 75

# HKK

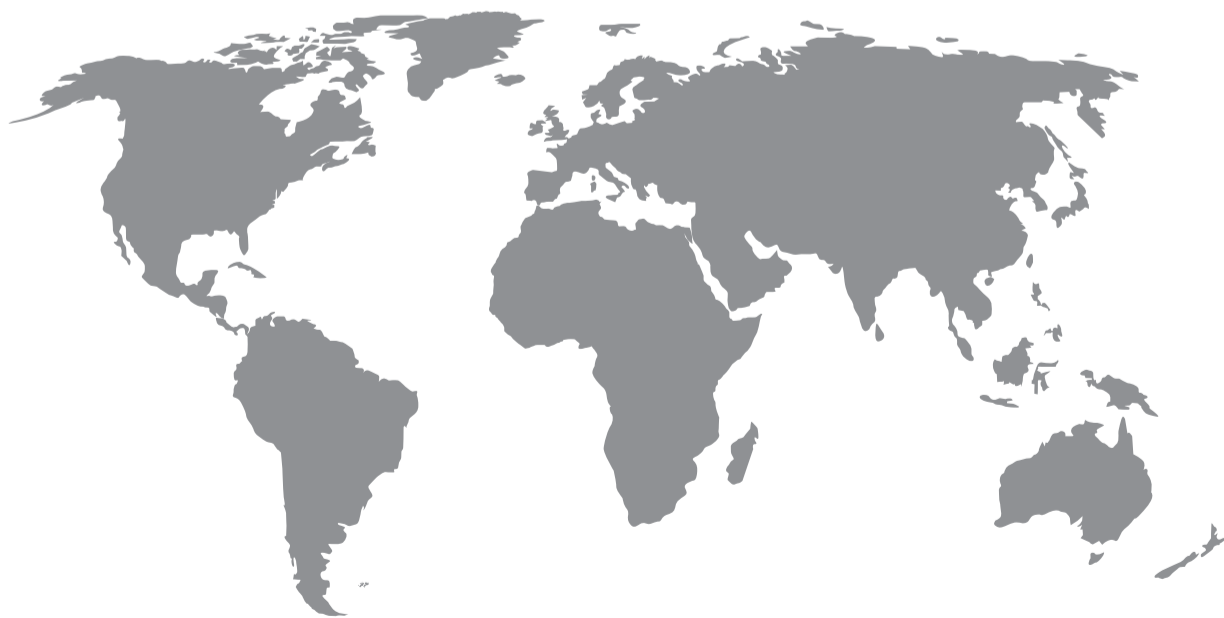


Screw end machining with a single row ball bearing

Designation	Ball screw type	Bearing type	d1 j6	L1	L2	DIN 471
<b>HKK 15</b>	<b>K25</b>	6202	15	14	11	15x1,0
<b>HKK 20</b>	<b>K32</b>	6204	20	17	14	20x1,2
<b>HKK 25</b>	<b>K40</b>	6205	25	18	15	25x1,2
<b>HKK 35</b>	<b>K50</b>	6207	35	23	17	35x1,5
<b>HKK 40</b>	<b>K63</b>	6208	40	24	18	40x1,75
<b>HKK 55</b>	<b>K80</b>	6211	55	28	21	55x2,0
<b>HKK 75</b>	<b>K100</b>	6215	75	32	25	75x2,5

**OFFICIAL ADDRESS**

KSK Precise Motion, a.s.  
Blanenská 1277/37  
664 34 Kuřim  
CZ - Czech republic  
tel.: +420 533 033 710  
fax: +420 533 033 734  
e-mail: info@ksk-pm.cz



[www.ksk-pm.com](http://www.ksk-pm.com)