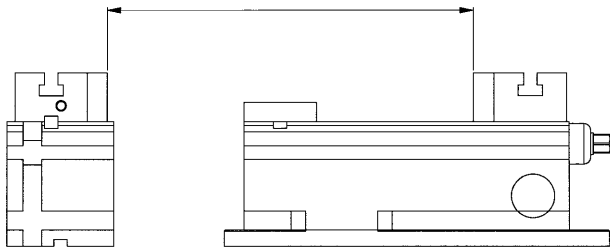
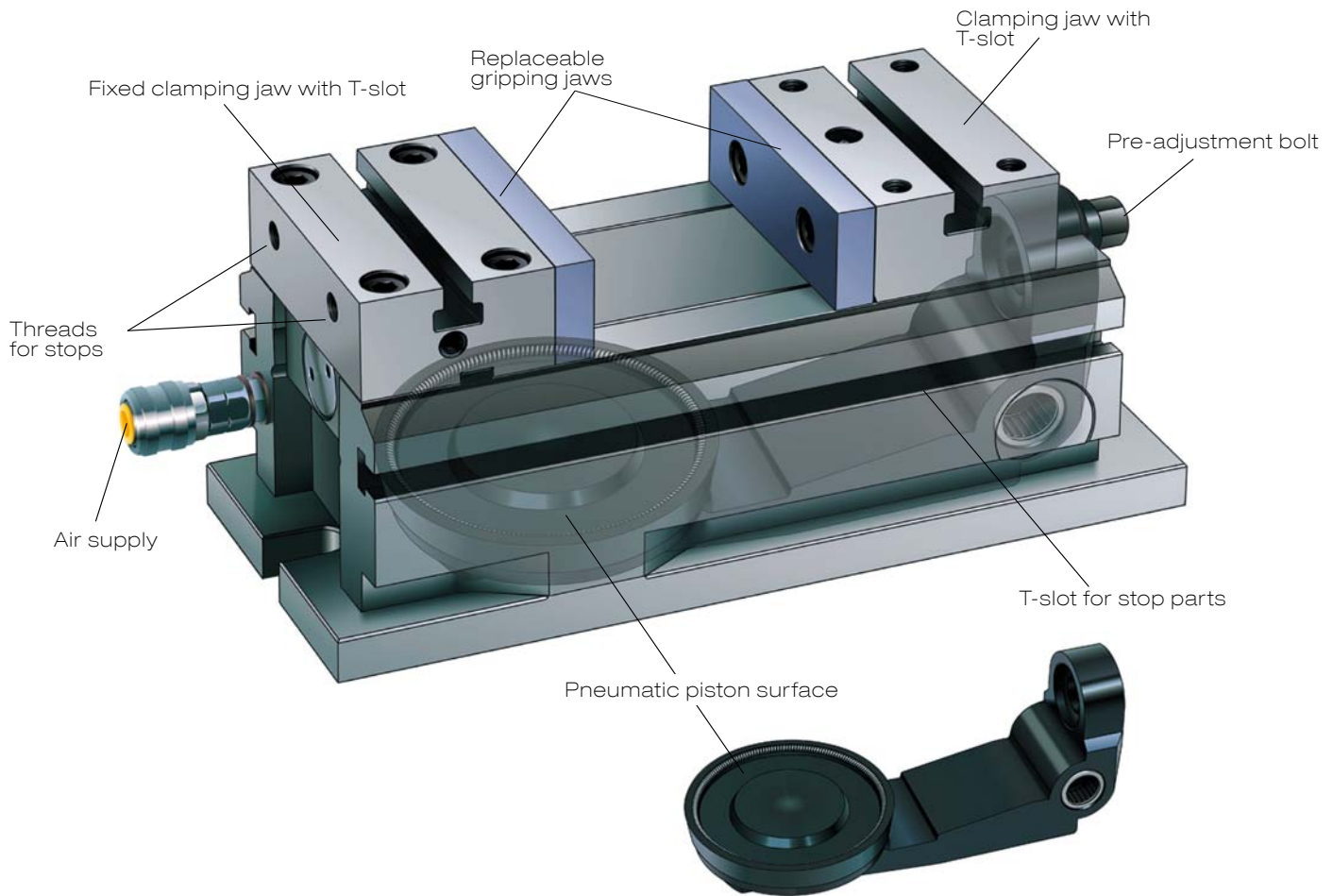


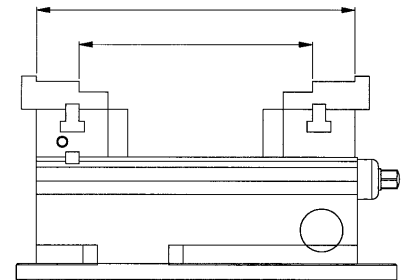
PNEUMATIC VICE - THE ADVANTAGES AT A GLANCE

- > The pneumatic vice is specifically designed for the machining of single and series parts that require quick and precise clamping.
- > The clamping force is adjustable to different work-piece requirements.
- > Jaws case-hardened 60 HRC
- > Jaw widths 70 to 200 mm
- > Clamping forces up to 70 kN at 6 bar

- > The pneumatic operation significantly reduces the clamping time.
- > All supports and guides are hardened (55-60 HRC) and ground. The supports are manufactured to a height tolerance of ± 0.01 mm.
- > With 4 slots, locators, gauges and special jaws can be easily attached.



Vice with modular carrier



Vice with stepped gripping jaw

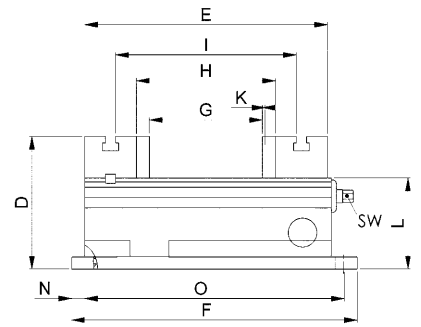
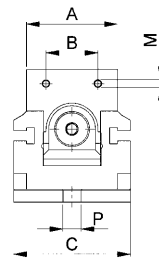
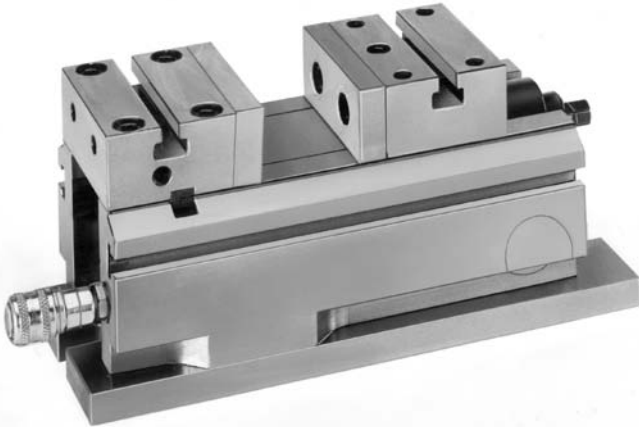
No. 6372

Base element

Hardened 56 HRC

With 1 pair of gripping jaws, smooth, hardened 60 HRC.

Order no.	Size	Jaw width A	Clamping force at 6 bar	
			[kN]	Weight [Kg]
301085	0700-E070	70	5	8,5
301101	0900-E090	90	10	18
301127	1002-E100	100	15	25
301143	1150-E115	115	22	30
301168	1301-E130	130	30	39
301184	1600-E160	160	50	58
301200	2000-E200	200	70	112



Dimensions:

Order no.	B	C	D	E	F	G	H	I	Stroke K	L	M	N	O	P	SW
301085	40	90	102	187	220	87	107	139	2	70	M6	10	200	14	8
301101	44	112	128	241	248	103	133	177	4	92	M8	20	288	18	14
301127	46	128	145	260	317	86	116	178	4	105	M10	20	277	18	14
301143	60	140	145	290	340	112	142	206	3,2	105	M10	20	300	18	17
301168	65	160	155	315	370	127	163	229	3,5	110	M10	20	330	18	17
301184	80	196	160	368	403	164	200	272	4	115	M10	18,5	366	18	17
301200	100	236	195	475	480	235	275	361	4,5	135	M12	20	440	18	17

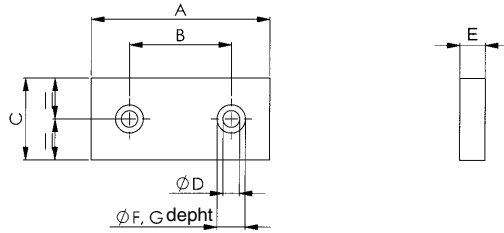
No. 6372

Gripping jaw, smooth

Hardened 60 HRC.



Order no.	Size	A	B	C	dia. D	E	dia. F	G	Weight [g]
301176	4048-E070	70	40	32	7,0	10	11	6,5	232
301192	4041-E090	90	44	36	8,5	15	14	9,0	352
301218	4042-E100	100	46	40	11,0	15	17	11,0	423
301234	4043-E115	115	60	40	11,0	15	17	11,0	493
301259	4044-E130	130	65	45	11,0	18	17	11,0	771
301275	4045-E160	160	80	45	11,0	18	17	11,0	950
301291	4046-E200	200	100	60	13,0	20	19	13,0	1790



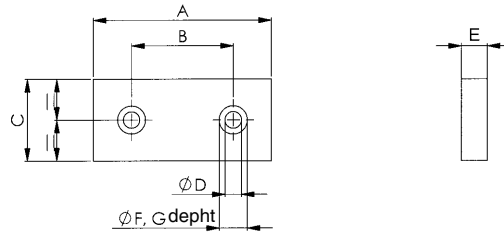
No. 6372

Gripping jaw, knurled

Hardened 60 HRC.



Order no.	Size	A	B	C	dia. D	E	dia. F	G	Weight [g]
301317	4071-E070	70	40	32	7,0	10	11	6,5	262
301333	4073-E090	90	44	36	8,5	15	14	9,0	322
301358	4074-E100	100	46	40	11,0	15	17	11,0	392
301374	4075-E115	115	60	40	11,0	15	17	11,0	455
301390	4076-E130	130	65	45	11,0	18	17	11,0	720
301416	4077-E160	160	80	45	11,0	18	17	11,0	896
301432	4078-E200	200	100	60	13,0	20	19	13,0	1661



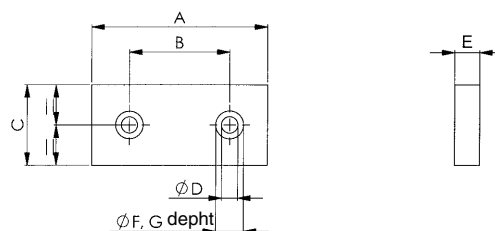
No. 6372

Gripping jaw, smooth

Not hardened, for individual processing.



Order no.	Size	A	B	C ±0.01	dia. D	E ±0.01	dia. F	G	Weight [g]
301580	4050-E070	70	40	32	7,0	10	11	6,5	235
301606	4001-E090	90	11	36	8,5	15	14	9,0	359
301622	4002-E100	100	46	40	11,0	15	17	11,0	426
301648	4003-E115	115	60	40	11,0	15	17	11,0	495
301663	4004-E130	130	65	45	11,0	18	17	11,0	775
301689	4005-E160	160	80	45	11,0	18	17	11,0	955
301705	4006-E200	200	100	60	13,0	20	19	13,0	1790



Subject to technical alterations.

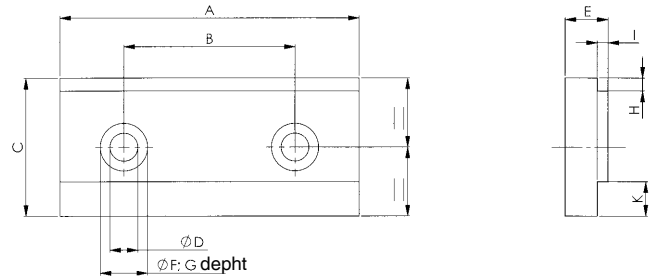
No. 6372

Gripping jaw, stepped

Hardened 60 HRC.



Order no.	Size	A	B	C ±0.01	dia. D	E ±0.01	dia. F	G	H ±0.01	I	K ±0.01	Weight [g]
301440	4061-E070	70	40	32	7,0	10	11	6,5	3	2,5	8	262
301465	4007-E090	90	44	36	8,5	15	14	9,0	4	3	9	322
301481	4008-E100	100	46	40	11,0	15	17	11,0	4	3	9	392
301507	4009-E115	115	60	40	11,0	15	17	11,0	4	3	9	455
301523	4010-E130	130	65	45	11,0	18	17	11,0	4	3	13	720
301549	4011-E160	160	80	45	11,0	18	17	11,0	4	3	13	896
301564	4012-E200	200	100	60	13,0	20	19	13,0	6	4	16	1661



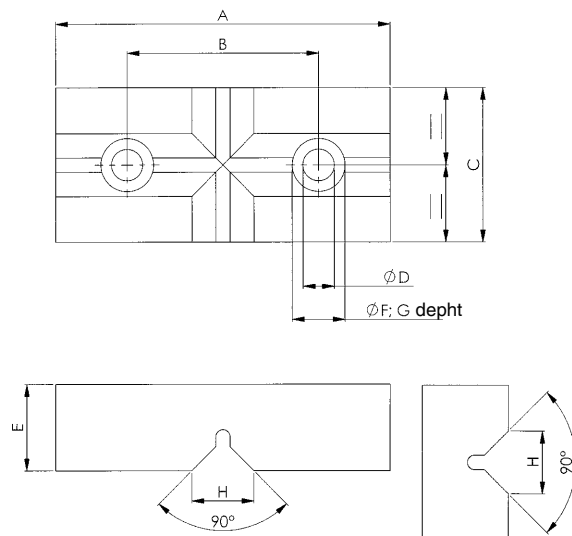
No. 6372

Gripping jaw, V-block

Hardened 60 HRC.



Order no.	Size	A	B	C ±0.01	D	E ±0.01	F	G	H	Weight [g]
301515	4054-E070	70	40	32	7	18	11	14	13,3	262
301531	4013-E090	90	44	36	9	26	14	20	20,3	532
301556	4014-E100	100	46	40	11	28	17	22	20,3	708
301572	4015-E115	115	60	40	11	28	17	22	20,3	822
301598	4016-E130	130	65	45	11	28	17	22	20,3	1079
301614	4017-E160	160	80	45	11	28	17	22	24,3	1296
301630	4018-E200	200	100	60	13	28	19	22	23,8	2260

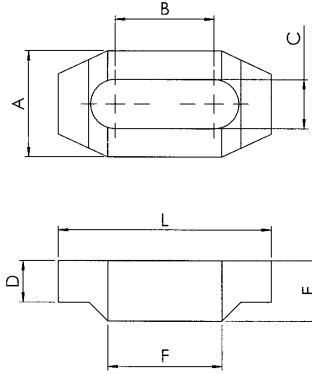


Subject to technical alterations.

No. 6372

Double-ended clamp

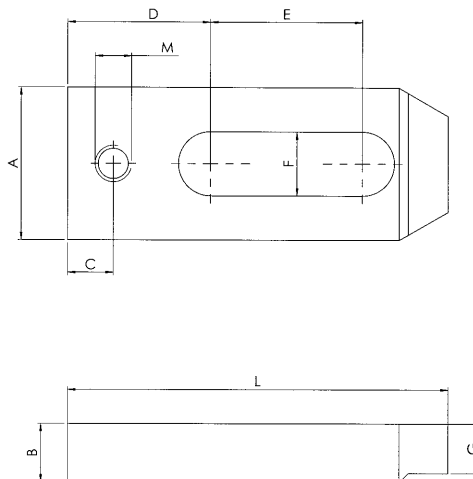
Order no.	Size	A	B	C	D	E	F	L	Weight [g]
301804	5003-E070-E090	28	26	13	11	16	30	56	135
301796	5001-E100-E200	38	30	17	16	18	34	60	226



No. 6372

Straight clamp

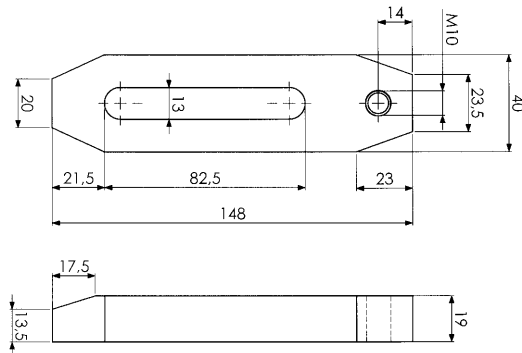
Order no.	Size	A	B	C	D	E	F	G	L	M	Weight [g]
301846	5006-E070-E090	26	16	12	33	25	13	11	86	12	278
301820	5002-E100-E200	50	19	15	47	50	21	16	125	12	524



No. 6372

Stop

Order no.	Size	Weight [g]
301861	5004	643



No. 6372

Pneumatic valve

Order no.	Size	Weight [g]
301903	6001	1037



No. 6372

Air filter and pressure regulator

Order no.	Size	Weight [g]
301929	6002	1079

