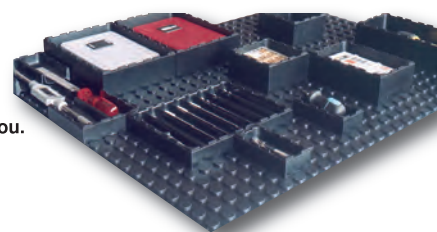


- stackable
- flexible
- clearly arranged

A whole range of different system boxes for a customised storage system. This means: No waste of space due to unnecessary shelves and quick access to tools, in accordance with your working routines.

Thanks to the napped base plate, each box stays in its place, even during transport. The system boxes can easily be stacked, dependent on the drawer height.

Customise AQURADO® according to your wishes - our field sales force will assist you.

**84131****UNI-BOXES**

AQURADO®
MODULARES ORDNUNGSSYSTEM

Type

ABS-plastics, black.
Simple box for receiving different parts.

84131 212-214**Type**

With holes for mounting the dividers (not included, see cat.-no. 84137.)

Note:

Also available as ESD-boxes.

External dimensions W x D x H mm	Internal dimensions W x D x H mm	Max. number of compartment dividers	84131	...
48 x 96 x 24	37 x 85 x 18	-		101
96 x 96 x 24	85 x 85 x 18	-		102
96 x 144 x 24	85 x 133 x 18	-		103
72 x 192 x 24	61 x 181 x 18	-		106
96 x 192 x 24	85 x 181 x 18	-		104
96 x 288 x 24	85 x 277 x 18	-		105
96 x 96 x 48	85 x 85 x 42	-		201
96 x 144 x 48	85 x 133 x 42	-		202
72 x 192 x 48	61 x 181 x 42	-		211
96 x 192 x 48	85 x 181 x 42	-		203
96 x 240 x 48	85 x 229 x 42	-		204
96 x 288 x 48	85 x 277 x 42	-		205
96 x 336 x 48	85 x 325 x 42	-		206
144 x 144 x 48	133 x 133 x 42	-		207
144 x 192 x 48	133 x 181 x 42	-		208
144 x 384 x 48	133 x 373 x 42	-		209
240 x 336 x 48	229 x 325 x 42	-		210
144 x 144 x 48	133 x 133 x 42	5	#	212
144 x 192 x 48	133 x 181 x 42	7		213
144 x 384 x 48	133 x 373 x 42	15		214

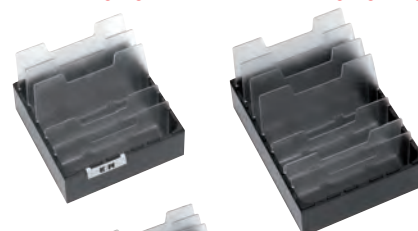
84131 101-106

84131 201-211

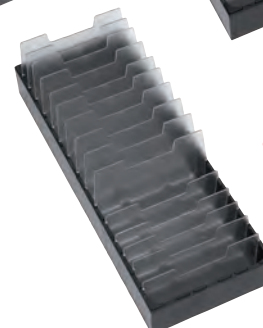


84131 212

84131 213



84131 214

**84137****Dividers**

AQURADO®
MODULARES ORDNUNGSSYSTEM

Type

Transparent.

Use

For Uni-boxes cat.-no. 84131 212-214.

Height mm	84137	...
60		101
100		102

84137 101

84137 102

**84132****MULTI-BOXES**

AQURADO®
MODULARES ORDNUNGSSYSTEM

Type

ABS-plastics, black.
Box with separate trays.

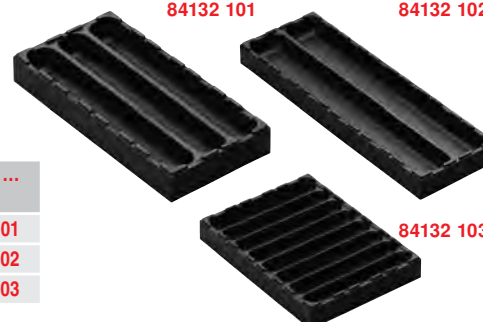
Use

For mounting several parts without mix-up.

External dimensions W x D x H mm	Dimensions per tray mm	Number of trays	84132	...
96 x 192 x 24	24 x 181 x 18	3		101
96 x 288 x 24	40 x 277 x 18	2		102
144 x 192 x 24	133 x 22 x 18	8		103

84132 101

84132 102



84132 103



AQURADO storage system

84133

VARIO-BOX

AQURADO®
MODULARES ORDNUNGSSYSTEM

Type

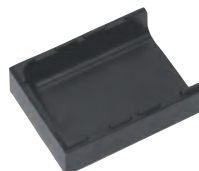
ABS-plastics, black.

End pieces for length customisation.

84133 101



84133 107



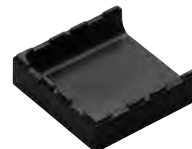
84133 104



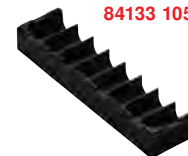
84133 103



84133 102



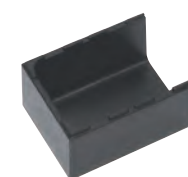
84133 105



84133 106



84133 108



External dimensions W x D x H mm	Number of trays	Tray width mm	84133	...
73 x 48 x 24	1	37		101
72 x 92 x 24	1	81		107
96 x 96 x 24	2	40		104
96 x 96 x 24	3	24		103
96 x 96 x 24	1	85		102
48 x 192 x 24	8	22		105
73 x 192 x 24	8	22		106
72 x 92 x 48	1	81		108

84134

SPECIAL-BOX

AQURADO®
MODULARES ORDNUNGSSYSTEM

Type

ABS-plastics, black.

With pre-manufactured tool mounts.

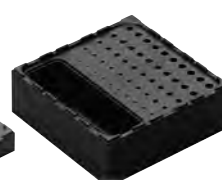
84134 101



84134 102



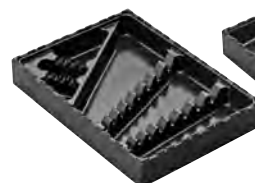
84134 201



84134 204



84134 208



84134 209



84134 210



84134 211



	External dimensions W x D x H mm	Number of slots	84134	...
Allen key box, size 1,5 - 10	96 x 288 x 24	9		101
Box for slide callipers	96 x 288 x 24	1		102
Twist drill box, 1,0 - 6,0/ 0,1 incr.	144 x 144 x 48	51		201
Twist drill box, 6,1 - 10,0/ 0,1 incr.	144 x 192 x 48	48		202
Collet box for ER 16	96 x 144 x 48	10		203
Collet box for ER 25	96 x 288 x 48	16		204
Collet box for ER 32	96 x 288 x 48	12		205
Collet box for ER 40	96 x 336 x 48	13		207
Open-end/combination wrench box	240 x 336 x 48	12		208
Box for double-ended ring wrenches	240 x 336 x 48	8		209
Box for screwdrivers	144 x 384 x 48	6		210
Socket wrench box 1/2 inch, size 10 - 32	144 x 384 x 48	22		211

84135

Base Plates

AQURADO®
MODULARES ORDNUNGSSYSTEM

Type

ABS-plastics, black.

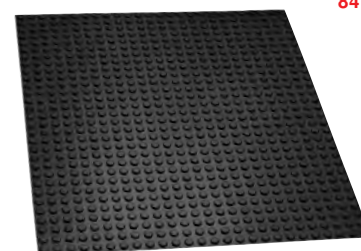
Base plate for the fixation of the separate elements, cut to use.

Note:

Also available as ESD-boxes.

Suitable assembly kit see cat.-no. 84136 109.

84135



Size mm	84135	...
430 x 600		099
455 x 528		100
528 x 624		101
600 x 600		102
720 x 525		103
1056 x 624		104

84136

Accessories for AQURADO® Storage Systems

AQURADO®
MODULARES ORDNUNGSSYSTEM

84136 109

Assembly kit for the fixation of the base plate, cut to use.

Comprising:

4 sticking pads, 2 cutting and sticking aids,
1 universal knife, assembly instructions.

84136 110-111

Labelling Tabs

Simple stick them in, the boxes still can be stacked. Colour light grey.

84136 110

Labelling tab, horizontal.

84136 111

Labelling tab, vertical.

Size mm	84136	...
-		109
48 x 15		110
48 x 15	#	111



84138

Drawer Assortments

AQURADO®
MODULARES ORDNUNGSSYSTEM

84138 101

17-part, fits tool cabinets cat.-no. 82335.

84138 102

15-part, fits tool cabinets cat.-no. 84300.

84138 103

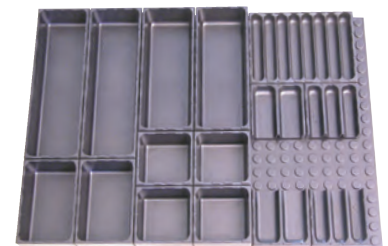
21-part, fits tool cabinets cat.-no. 84320.

84138 101	17-part set, consists of:	
1 x Base plate	455 x 525 mm	(cat.-no. 84135 100)
2 x UNI-BOX	96 x 192 x 48 mm	(cat.-no. 84131 203)
2 x UNI-BOX	96 x 240 x 48 mm	(cat.-no. 84131 204)
4 x UNI-BOX	96 x 96 x 48 mm	(cat.-no. 84131 201)
3 x UNI-BOX	48 x 96 x 24 mm	(cat.-no. 84131 101)
1 x UNI-BOX	144 x 192 x 26 mm	(cat.-no. 84132 103)
2 x VARIO-BOX	96 x 96 x 24 mm	(cat.-no. 84133 103)
2 x VARIO-BOX	96 x 96 x 24 mm	(cat.-no. 84133 104)

84138 102	15-part set, consists of:	
1 x Base plate	430 x 600 mm	(cat.-no. 84135 099)
2 x UNI-BOX	96 x 288 x 48 mm	(cat.-no. 84131 205)
2 x UNI-BOX	96 x 144 x 48 mm	(cat.-no. 84131 202)
4 x UNI-BOX	96 x 96 x 48 mm	(cat.-no. 84131 201)
2 x UNI-BOX	96 x 240 x 48 mm	(cat.-no. 84131 204)
1 x UNI-BOX	144 x 192 x 24 mm	(cat.-no. 84132 103)
2 x VARIO-BOX	96 x 96 x 24 mm	(cat.-no. 84133 103)
2 x VARIO-BOX	96 x 96 x 24 mm	(cat.-no. 84133 104)

84138 103	21-part set, consists of:	
1 x Base plate	600 x 600 mm	(cat.-no. 84135 102)
6 x UNI-BOX	96 x 336 x 48 mm	(cat.-no. 84131 206)
3 x UNI-BOX	96 x 122 x 48 mm	(cat.-no. 84131 203)
6 x UNI-BOX	96 x 96 x 24 mm	(cat.-no. 84131 201)
6 x UNI-BOX	48 x 96 x 24 mm	(cat.-no. 84131 101)

	84138	...
17-part set		101
15-part set		102
21-part set		103



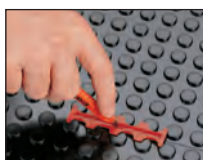
Info

The simple way to get an overview

AQURADO®
MODULARES ORDNUNGSSYSTEM

Nap matting for the perfect fixation of the modules and for protecting the contents. Can be cut to ANY drawer size!

cut it



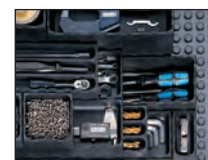
break it



glue it



fill it with modules



84205

HHW Service Boxes

Your advantage - Our service

- Reduction of activity cost
- No effort for ordering and processing for constantly recurring items
- Saving time
- All the handling necessary is done by the **HHW** field sales force
- Reduction in cost
- Reduction of fixed capital
- No redundant stock keeping
- Fixed prices
- Market-oriented prices, guaranteed for a given time
- No additional cost
- All **HHW** services included
- No zero stock balance
- Your best products are always available thanks to repeated checks
- Automatic refill
- The **HHW** sales force refills your system in agreed-upon time-frames
- Determination of the tools to be stored
- Creation of a range in accordance with your customers

- Determination of quantities to be stored
- Definition of the materials necessary
- Contract design
- Determination of visit and refill-cycles
- Start-up of the **HHW** Service Box



Type

Assembly with ball-bearing mounted full-extension drawers. Housing, powder-coated.

84205 301-303

84205 201-203

84205 101-103

Type	External dimensions H x W x D mm	Effective area H x W x D mm	Number of drawers x (useable) front height mm	Drawer finish RAL colour	Housing finish RAL colour	84205	...
On-top cabinet	520 x 556 x 450	450 x 478 x 410	5 x 90 (70)	5012 light blue	7035 light grey	F #	101
On-top cabinet	520 x 556 x 450	450 x 478 x 410	5 x 90 (70)	6011 reseda green	7035 light grey	F #	102
On-top cabinet	520 x 556 x 450	450 x 478 x 410	5 x 90 (70)	3020 traffic red	7035 light grey	F #	103
Drawer cabinet	800 x 722 x 700	720 x 600 x 600	4 x 90 (70) + 3 x 120 (100)	5012 light blue	7035 light grey	F #	201
Drawer cabinet	800 x 722 x 700	720 x 600 x 600	4 x 90 (70) + 3 x 120 (100)	6011 reseda green	7035 light grey	F #	202
Drawer cabinet	800 x 722 x 700	720 x 600 x 600	4 x 90 (70) + 3 x 120 (100)	3020 traffic red	7035 light grey	F #	203
Drawer cabinet	1036 x 722 x 700	960 x 600 x 600	8 x 120 (100)	5012 light blue	7035 light grey	F #	301
Drawer cabinet	1036 x 722 x 700	960 x 600 x 600	8 x 120 (100)	6011 reseda green	7035 light grey	F #	302
Drawer cabinet	1036 x 722 x 700	960 x 600 x 600	8 x 120 (100)	3020 traffic red	7035 light grey	F #	303

84250

HHW Standard Tool Cabinets, Width 705 mm



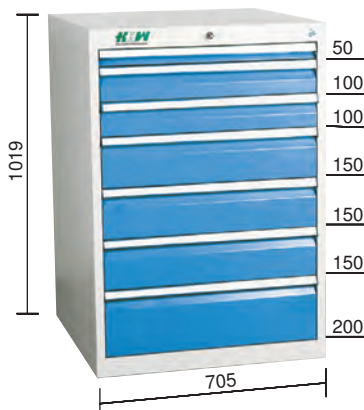
Type

- All drawers with precision ball bearing guidance. Extreme extension (93%), therefore optimal access and overview.
- The rails are flush with the housing. No protruding edges and corners.
- Aluminium rails with transparent cover and white paper strips, lateral protection caps.
- Drawers 80 kg load capacity, centralised locking, 2 keys, with drawer lock (only one drawer can be opened at any one time).

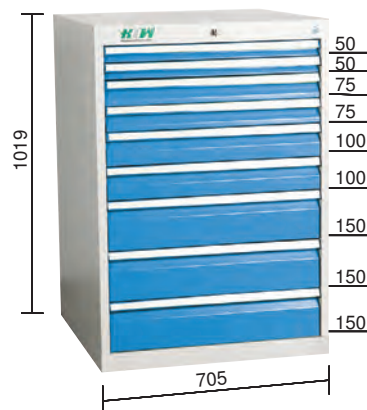
Dim. of cabinet H x W x D:	1019 x 705 x 736 mm
Internal drawer dim.:	600 x 600 mm
Finish:	powder-coated
Housing:	RAL 7035 light grey
Drawers:	RAL 5012 light blue

Tool cabinet with	84250	...
7 drawers	F #	501
9 drawers	F #	502

With 7 drawers



With 9 drawers



84255 - 84256

Drawer fitting assortments for tool cabinets with drawers cat.-no. 84250

84255

For cat.-no. 84250 301 + 501

Comprising:

- 1 each set type 130, 134, 135, 139 and 2 sets type 144.

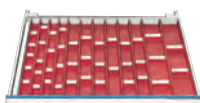
84256

For cat.-no. 84250 302 + 502

Comprising:

- 1 each set type 130, 140 and 2 sets type 138, 143 and 144.

Type 130



Type 134



Type 135



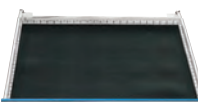
Type 138



Type 139



Type 140



Type 143



Type 144



84255	...	84256	...
#	101	#	101



Tool cabinets	series 50	see cat.-no. 84300 - 84310
Tool cabinets	series 70	see cat.-no. 84320 - 84330
Tool cabinets	series 100	see cat.-no. 84340 - 84350



Building block system, from tool cabinets through to complete tool room counters.

Cabinet in canted fine quality sheet steel design;

Cabinet in canted fine quality sheet steel design; stability provided by special . **Standard equipment with centralised locking and drawer lock (only one drawer can be opened at any one time).**

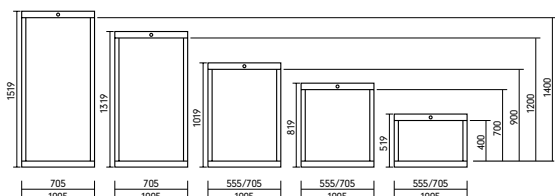
Cabinet frame closed and very stable.

Cabinet frame (inside):	1,75 mm sheet steel,
Drawer frame :	1,25 mm sheet steel,
Z-slide:	4,00 mm sheet steel,
Ball bearings:	tested with approx. 55 000 retractions.

Drawers available with each 5 sizes of useful heights and 10 sizes of front heights. Many combinations possible. The drawers are provided with slotted strips at front, rear and side for mounting the different fittings for. All drawer floors are completely perforated.

Available cabinet sizes: 5 units high,
3 units wide.

Drawer load capacity either 80 or 200 kg, each with full extension.



Available colours:

RAL-colours:



RAL 6011
reseda green



RAL 5013
cobalt blue



RAL 7035
light grey



RAL 9005
black



RAL 5015
sky blue



RAL 5012
light blue



RAL 3003
ruby red



RAL 3020
traffic red



RAL 7040
window grey

Aluminium rails with transparent cover and white paper strips.

Lateral protection caps prevent injury.

The cabinets can be stacked to certain heights. When arranged in a row, they are connected by side bolts. Inside, the drawer runners are fitted into spot-welded runner beads.

The rails are flush with the housing.

Standard finish:

Housing RAL7035 light grey,
drawers RAL 5012 light blue,
powder-coated.

Further finishes see colour chart, without additional cost.

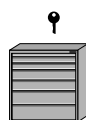


Note:

Cabinet Types

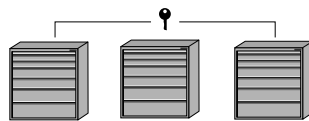
The following pages are showing -ready-to-use- cabinet types, which are in most common use throughout workshops and warehouses. The tool cabinets can be individually configured, as well. When doing this, it has to be ensured that the sum of all drawer front heights is the same as the useable height of the cabinet.

Locking systems of the HHW Tool Cabinets



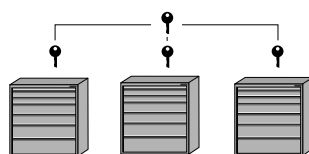
Regular locking system

as standard. The locks have different keys. With each key only one tool cabinet can be opened.



Family locks,

without additional cost. All locks have the same key. Each key can open several tool cabinets (please specify in your purchase order).



Main locking system,

subject to surcharge. The locks have different keys. With each key only one tool cabinet can be opened. With one master key, all drawer units can be opened.



Tool cabinets with drawers

84300

Standard Tool Cabinets Series 50/555



HHW

Type

Width: 555 mm.

Use

Smallest width unit of the system range, ideal as **machine cabinet**, enabling compact storage of a sufficient number of tools within easy reach of the workplace.

Standard finish:

Housing RAL 7035 light grey, side panel RAL 5012 light blue. Further finishes in RAL 3003, 3020, 5013, 5015, 9005 and 7040 without additional cost (not in stock).

Colour table see page 84.6

Note:

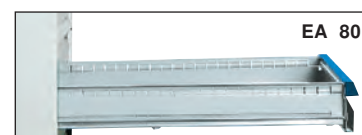
Housing and drawers for individual configurations see cat.-no. 84400 - 84405.



Cabinet external dimensions:	555 mm wide, 736 mm deep, 519, 819, or 1019 mm high.
Internal dimensions of the drawers:	450 mm wide, 600 mm deep.
Accessories:	
Cover plate	cat. no. 84370 101,
Flanged edge	cat. no. 84373 601,
Corrugated rubber covering	cat. no. 84376 101 and
pallet truck base plinth	cat. no. 84379 601
at additional cost.	

Drawers dimensions								
Front height	mm	50	75	100	125	150	175	200
Useable height	mm	30	55	80	105	130	150	180
Unit height	mm	30	55	80	80	130	130	180

Standard tool cabinets of series 50 of most common drawer configurations.



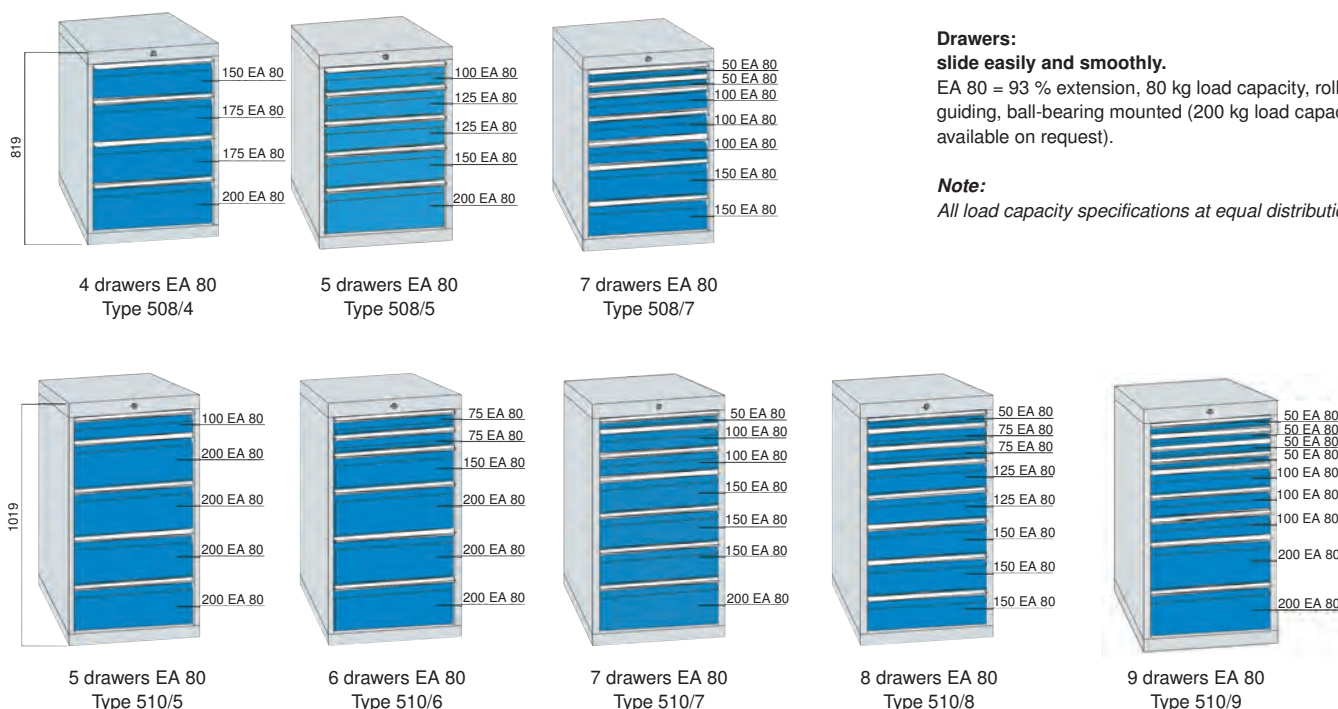
Drawers:

slide easily and smoothly.

EA 80 = 93 % extension, 80 kg load capacity, roller guiding, ball-bearing mounted (200 kg load capacity available on request).

Note:

All load capacity specifications at equal distribution.



Type	Number of drawers	84300	...
508/4	4 x EA 80	F #	501
508/5	5 x EA 80	F #	502
508/7	7 x EA 80	F #	503
510/5	5 x EA 80	F #	504
510/6	6 x EA 80	F #	505
510/7	7 x EA 80	F #	506
510/8	8 x EA 80	F #	507
510/9	9 x EA 80	F #	508



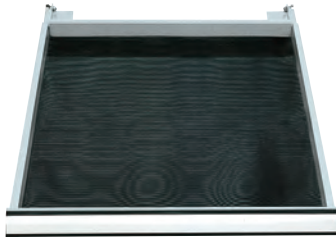
Use

For cabinets width 555 mm.

Note:

Separate drawer fittings, see
cat.-no. 84450-84476.

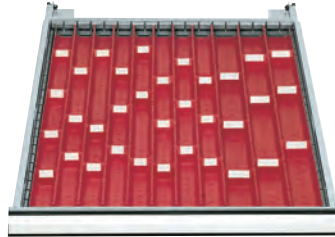
MP = tray plate,
Stw = tray divider,
KTK = compartment for small parts,
MF = compartment rail,
TW = compartment divider.



84305

Model 501

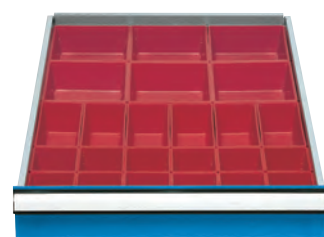
1 x rubber covering 450 x 600 mm



84306

Model 502

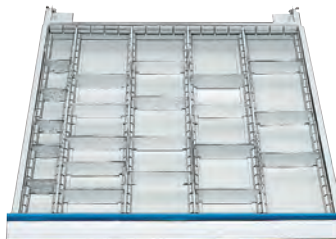
8 x MP with 4 trays,
4 x MP with 3 trays,
20 x STW for 4 trays,
40 x STW for 3 trays



84307

Model 504

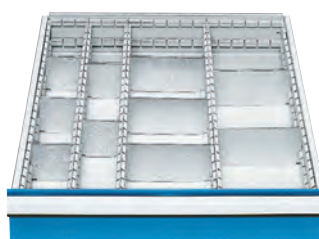
6 x KTK 150 x 150 x 65 mm,
6 x KTK 75 x 150 x 65 mm,
12 x KTK 75 x 75 x 65 mm



84308

Model 505

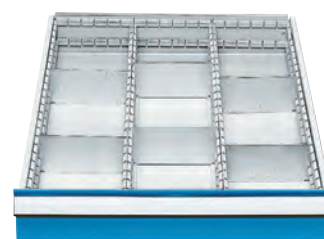
4 x MF 600 mm, 5 x TW 50 mm, 16 x TW 100 mm



84309

Model 506

3 x MF 600 mm, 5 x TW 75 mm, 5 x TW 150 mm



84310

Model 507

2 x MF 600 mm, 6 x TW 150 mm

Model	501		502		504		505		506		507	
for front height mm	84305	...	84306	...	84307	...	84308	...	84309	...	84310	...
50			#	201			#	101	#	101	#	101
75							#	102	#	102	#	102
100 and 125					#	103	#	103	#	103	#	103
150 and 175											#	104
200											#	105
all front heights		201										

**Type**

Width: 705 mm.

Use

Conventional width, as **part of tool room counters**
for **central tool and material storage** or as
machine cabinet for local storage.

Standard finish:

Housing RAL 7035 light grey, side panel
RAL 5012 light blue. Further finishes in
RAL 3003, 3020, 5013, 5015, 9005 and 7040
without additional cost (not in stock).

Colour table see page 84.6

Note:

Housing and drawers for individual configurations
see cat.-no. 84410 - 84418.



continuation ➤



Tool Cabinets

continuation ►

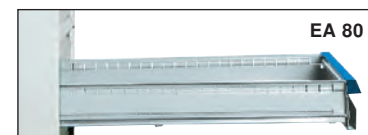
Drawers: slide easily and smoothly.

EA 80 = 93 % extension, 80 kg load capacity, roller guiding, ball-bearing mounted (200 kg load capacity

available on request).

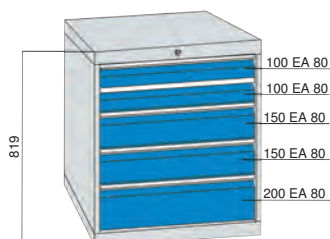
Note:

All load capacity specifications at equal distribution.

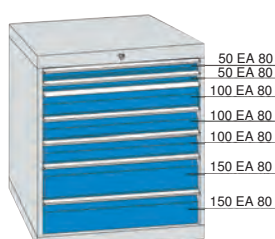


Drawers	Dimensions							
Front height	mm	50	75	100	125	150	175	200
Useable height	mm	30	55	80	105	130	150	180
Unit height	mm	30	55	80	80	130	130	180

Standard tool cabinets of series 70 of most common drawer configurations.



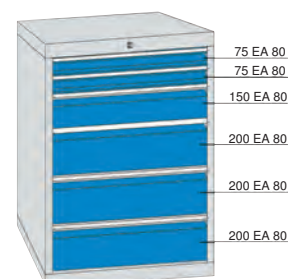
5 drawers EA 80
Type 708/5



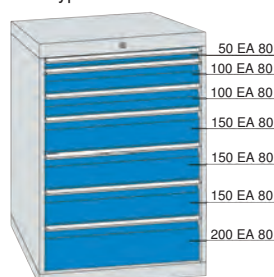
7 drawers EA 80
Type 708/7



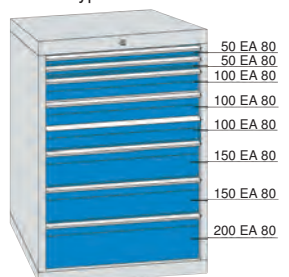
5 drawers EA 80
Type 710/5



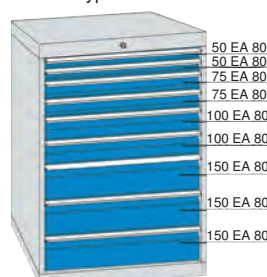
6 drawers EA 80
Type 710/6



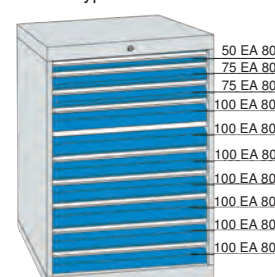
7 drawers EA 80
Type 710/7



8 drawers EA 80
Type 710/8



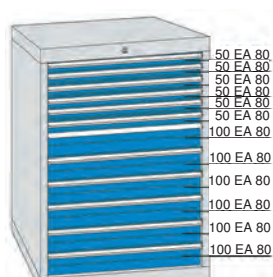
9 drawers EA 80
Type 710/9



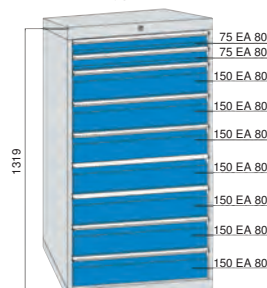
10 drawers EA 80
Type 710/10



11 drawers EA 80
Type 710/11



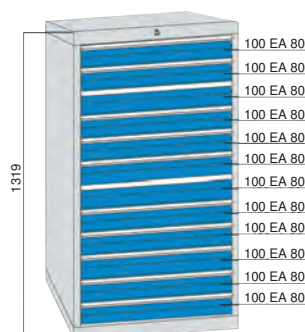
12 drawers EA 80
Type 710/12



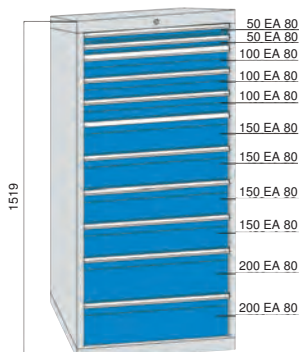
9 drawers EA 80
Type 713/9



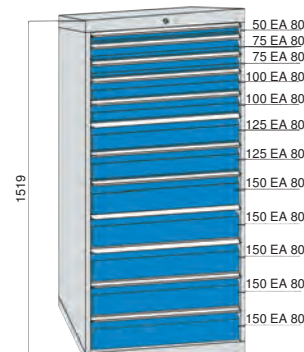
10 drawers EA 80
Type 713/10



12 drawers EA 80
Type 713/12

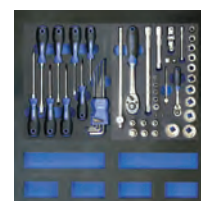


11 drawers EA 80
Type 715/11



12 drawers EA 80
Type 715/12

Note:
Fitting frames for
ATORN tool inserts
see cat. -no. 59692.



Type	Number of drawers	84320	...
708/5	5 x EA 80	F #	501
708/7	7 x EA 80	F #	502
710/5	5 x EA 80	F #	503
710/6	6 x EA 80	F #	504
710/7	7 x EA 80	F #	505
710/8	8 x EA 80	F #	506
710/9	9 x EA 80	F #	507
710/10	10 x EA 80	F #	508

Type	Number of drawers	84320	...
710/11	11 x EA 80	F #	509
710/12	12 x EA 80	F #	510
713/9	9 x EA 80	F #	511
713/10	10 x EA 80	F #	512
713/12	12 x EA 80	F #	513
715/11	11 x EA 80	F #	514
715/12	12 x EA 80	F #	515

Use

For cabinets, width 705 mm.

Note:

Separate drawer fittings, see cat.-no. 84450- 84476.

MP = tray plate,

Stw = tray divider,

KTk = compartment for small parts,

MF = compartment rail,

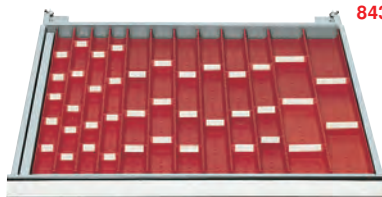
TW = compartment divider.



84325

Model 701

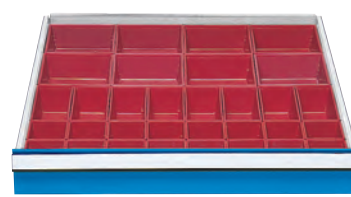
1 x rubber covering 600 x 600 mm



84326

Model 702

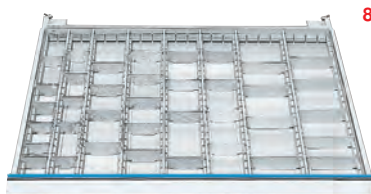
4 x MP with 4 trays, 20 x Stw. for 4 trays,
8 x MP with 3 trays, 30 x Stw. for 3 trays,
4 x MP with 2 trays, 10 x Stw. for 2 trays



84327

Model 704

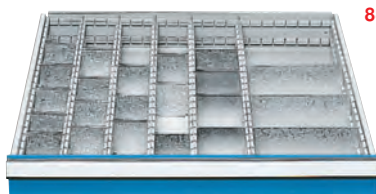
8 x KTK 150 x 150 x 65 mm,
8 x KTK 75 x 150 x 65 mm,
16 x KTK 75 x 75 x 65 mm



84328

Model 705

7 x MF 600 mm, 11 x TW 50 mm,
16 x TW 75 mm, 9 x TW 100 mm



84329

Model 706

5 x MF 600 mm, 15 x TW 75 mm,
4 x TW 100 mm, 3 x TW 200 mm



84330

Model 707

3 x MF 600 mm, 9 x TW 150 mm

Model	701		702		704		705		706		707	
for front height mm	84325	...	84326	...	84327	...	84328	...	84329	...	84330	...
50			#	201			#	101	#	101	#	101
75							#	102	#	102	#	102
100 and 125					#	103	#	103	#	103	#	103
150 and 175											#	104
200											#	105
all front heights		201										

84340

Standard Tool Cabinets Series 100/1005

**Type**

Width: 1005 mm.

Use

Most common width, as **part of tool room counters for central tool and material storage** or as machine cabinet for local storage.

Standard finish:

Housing RAL 7035 light grey, side panel

RAL 5012 light blue. Further finishes in

RAL 3003, 3020, 5013, 5015, 9005 and 7040

without additional cost (not in stock).

Colour table see page 84.6

Note:

Housing and drawers for individual configurations see cat.-no. 84420 - 84428.



continuation ►



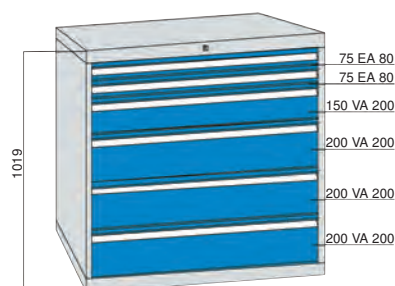
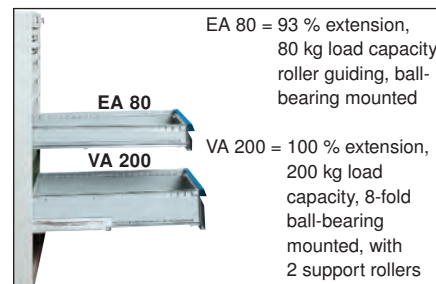
continuation ▶

Slide easily and smoothly.
Load capacity 200 kg.

Note:

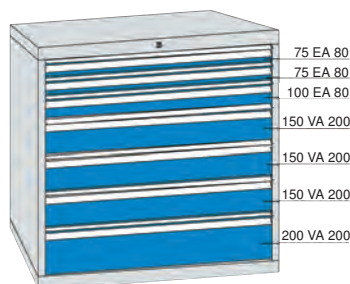
All load capacity specifications at equal distribution.

Drawers	Dimensions									
Front height	mm	50	75	100	125	150	175	200	300	400
Useable height	mm	30	55	80	105	130	150	180	280	380
Unit height	mm	30	55	80	80	130	130	180	180	180

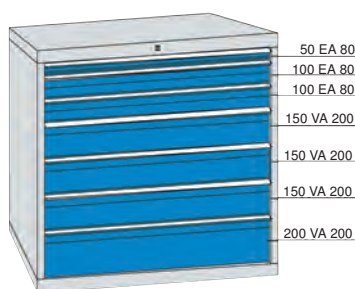


6 drawers EA 80/VA 200
Type 1010/6

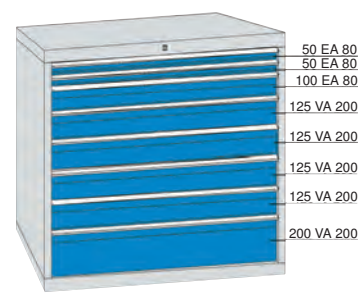
Standard tool cabinets of series 100 of most common drawer configurations.



7 drawers EA 80/VA 200
Type 1010/7



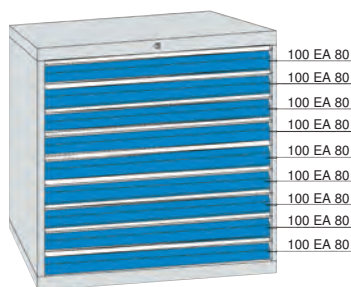
7 drawers EA 80/VA 200
Type 1010/7



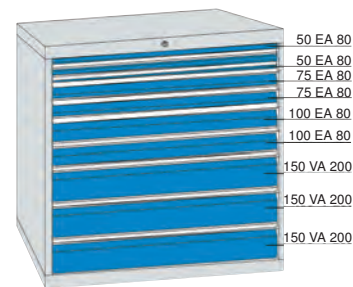
8 drawers EA 80/VA 200
Type 1010/8



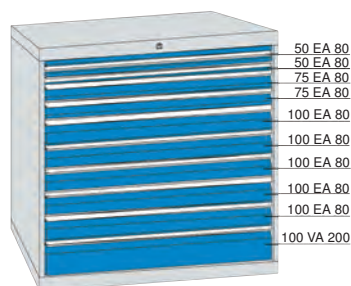
8 drawers EA 80/VA 200
Type 1010/8



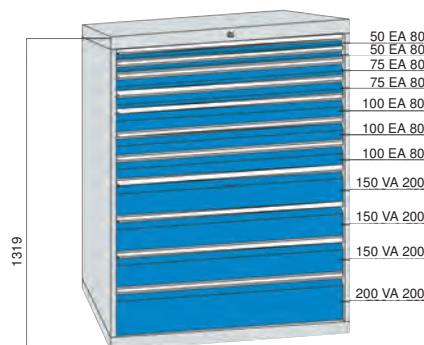
9 drawers EA 80
Type 1010/9



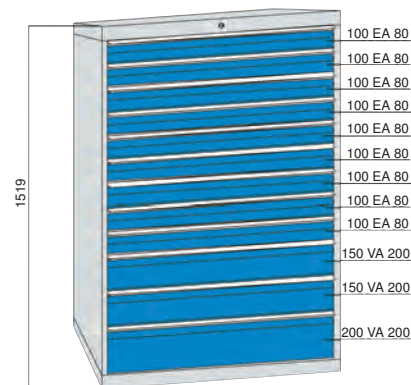
9 drawers EA 80/VA 200
Type 1010/9



10 drawers EA 80/VA 200
Type 1010/10



11 drawers EA 80/VA 200
Type 1013/11



12 drawers EA 80/VA 200
Type 1015/12

Type	Number of drawers	84340	...
1010/6	6 x EA 80 / VA 200	F #	501
1010/7	7 x EA 80 / VA 200	F #	502
1010/7	7 x EA 80 / VA 200	F #	503
1010/8	8 x EA 80 / VA 200	F #	504
1010/8	8 x EA 80 / VA 200	F #	505

Type	Number of drawers	84340	...
1010/09	9 x EA 80	F #	506
1010/9	9 x EA 80 / VA 200	F #	507
1010/10	10 x EA 80 / VA 200	F #	508
1013/11	11 x EA 80 / VA 200	F #	509
1015/12	12 x EA 80 / VA 200	F #	510

84345 - 84350

Drawer Fitting Assortments Series 100

Use

For cabinets, width 1005 mm.

Note:

Separate drawer fittings, see cat.-no. 84450-84476.

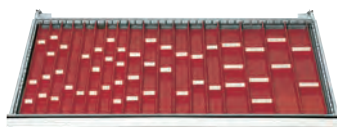
MP = tray plate,
Stw = tray divider,
KTK = compartment for small parts,
MF = compartment rail,
TW = compartment divider.



84345

Model 1001

1 x rubber covering 900 x 600 mm



84346

Model 1002

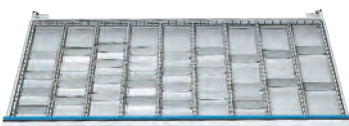
8 x MP with 4 trays, 40 x Stw. for 4 trays,
8 x MP with 3 trays, 30 x Stw. for 3 trays,
8 x MP with 2 trays, 20 x Stw. for 2 trays



84347

Model 1004

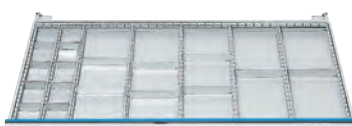
9 x KTK 150 x 150 x 65 mm,
18 x KTK 75 x 150 x 65 mm,
24 x KTK 75 x 75 x 65 mm



84348

Model 1005

8 x MF 600 mm, 30 x TW 100 mm



84349

Model 1006

6 x MF 600 mm, 8 x TW 75 mm, 8 x TW 150 mm



84350

Model 1007

5 x MF 600 mm, 15 x TW 150 mm

Model	1001		1002		1004		1005		1006		1007	
for front height mm	84345	...	84346	...	84347	...	84348	...	84349	...	84350	...
50			#	201			#	101	#	101	#	101
75							#	102	#	102	#	102
100 and 125					#	103	#	103	#	103	#	103
150 and 175											#	104
200											#	105
all front heights		201										

84360

Tool corner cabinet



Type

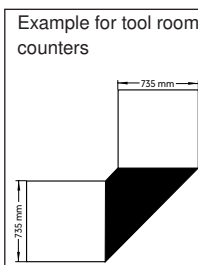
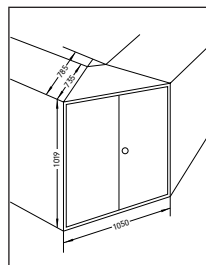
With two doors, locked by rotating cylinder lock, used for rectangular tool room counters.

Standard finish:

Housing RAL 7035 light grey, doors RAL 5012 light blue.

Use

Suitable as filler piece or as additional effective area thanks to 2 individually adjustable storage shelves.



84360

Dimensions H x W x D mm	84360	...
1019 x 1050 x 735	F #	501

Note:

Further finishes in RAL 3003, 3020, 5012, 5015, 9005 and 9005 without additional cost (not in stock).

Info

Accessories for tool cabinets

Series 50 / 70 / 100 (cat.-no. 84370 - 84379)

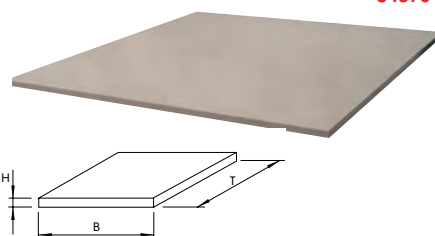
84370

Cabinet cover panels

Type

Made of melamine-resin-coated chipboard, 19 mm thick, light grey.

For tool cabinets series	H x W x D mm	84370	...
50	19 x 555 x 736	#	101
70	19 x 705 x 736	#	102
100	19 x 1005 x 736	#	103
Corner cabinet	19 x 1100 x 736	#	105



84370



Accessories for tool cabinets | Machine cabinets for local storage | Tool cabinets with sliding doors

84373

Flanged Edge

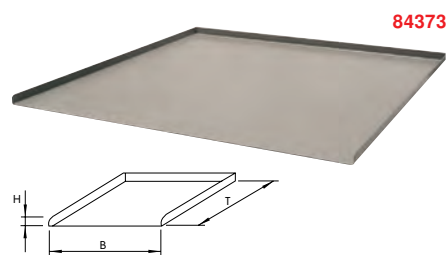
Type

Sheet steel edging on 3 sides, 25 mm, 1,5 mm thick, powder-coated.

Finish:

RAL 7035 light grey, standard.
Further finishes see colour table page 84.6 without additional cost (not in stock).

For tool cabinets series	H x W x D mm	84373	...
50	25 x 555 x 736	#	601
70	25 x 705 x 736	#	602
100	25 x 1005 x 736	#	603



84376

Corrugated Rubber Covering

Type

3 mm thick, oil-resistant, to be used in conjunction with the flanged edge or separately. Colour: black.

For tool cabinets series	Width x Depth mm	84376	...
50	550 x 730	#	101
70	700 x 730	#	102
100	1000 x 730	#	103



84379

Pallet Truck Base Plinth



Type

Rugged, sturdy design, with 2 panels.

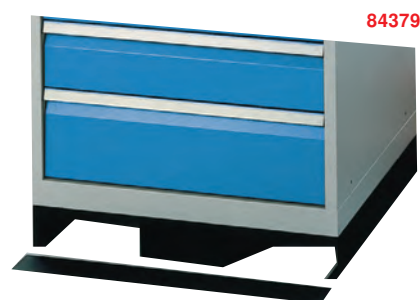
Finish:

RAL 9005 black, standard.

Note:

Only transport unloaded, max. cabinet height 1019 mm. Pallet truck base plinth available on request.

For tool cabinets series	H x W x D mm	84379	...
50	100 x 555 x 736	#	601
70	100 x 705 x 736	#	602
100	100 x 1005 x 736	#	603



84720

Machine cabinets for local storage



Type

Stable welded sheet steel housing made of quality fine sheet steel, variable configuration. 1,0 mm thick, stability provided by special stiffened parts. Centralised locking with drawer stop, only one drawer can be opened at any one time, drawers close flush with the housing. Strip handles with labelling strips.
With 7 drawers ball-bearing mounted, 100% extension by means of telescopic system.
Load capacity per drawer 75 kg.
Side walls with slots for individual configuration.
Internal drawer dimensions: W x D 900 x 400 mm.

Standard finish:

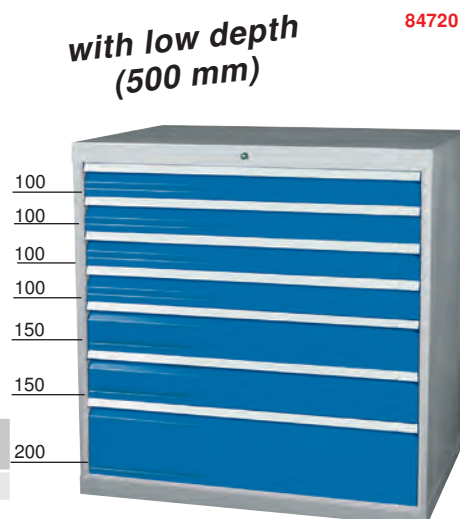
Housing RAL 7035 light grey, drawers RAL 5012 light blue, powder-coated. Further finishes in RAL 3003, 5010 and 7016 without additional cost (not in stock).

Note:

Other front heights of drawers see cat. no. 84730.

Dimensions H x W x D mm	84720	...
1019 x 980 x 500	F #	502

with low depth
(500 mm)



84728

Empty housing



Type

Similar to cat.-no. 84720, but without drawers.
For customising with drawers cat.-no. 84730 with different front heights.

Standard finish:

RAL 7035 light grey, powder-coated.
Further finishes in RAL 3003, 5010, 6011 and 7016 without additional cost (not in stock).

Note:

The sum of the front heights must be the same as the inbuild size of the housing (900 mm).

Dimensions H x W x D mm	Housing useable height mm	84728	...
1019 x 980 x 500	900	F #	602



84730

Single drawers for empty cabinet housings cat.-no. 84728



Type

Drawers made of sheet steel with ball-bearing mounted telescopic rails. The perforated base and the slotted side walls ensure individual configuration. Front panels of drawers in 5 different heights with plastics rails and marking strips. All drawers exchangeable. Internal drawer dimensions: W x D 900 x 400 mm.

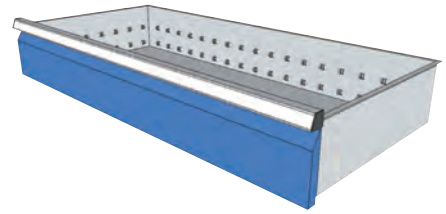
Standard finish:

RAL 5012 light blue, powder-coated. Further finishes in RAL 3003, 5010, 7016 and 7035 without additional cost (not in stock).

Note:

The sum of the front heights must be the same as the inbuild size of the housing (900 mm).

84730



Front height mm	Unit height mm	Useable height mm	Loading capacity kg	84730	...
100	51	55	75	#	506
150	84	86	75	#	507
200	125	128	75	#	508
250	204	207	75	#	509
300	204	282	75	#	511

84732

Drawer fitting assortments for single drawers cat.-no. 84730



Type

Through plates made of sheet steel, powder-coated. Compartment dividers made of galvanised sheet steel.

Height 85 mm for front height 100 mm.

Height 135 mm for front height 150 mm.

Complete fitting per each drawer (see model).

Use

For machine cabinet for local storage series 1100 (cat.-no. 84720) and drawers series 1100 (cat.-no. 84730).

84732 201+204



84732 202+205



84732 203+206



For front height mm	Number of shelves	Compartment rails pcs. x length x height	Compartment dividers pcs. x length x height	84732	...
100	12	2 x 400 x 85	9 x 300 x 85	#	201
100	16	3 x 400 x 85	6 x 250 x 85 and 6 x 200 x 85	#	202
100	20	4 x 400 x 85	6 x 150 x 85 and 9 x 200 x 85	#	203
150	12	2 x 400 x 135	9 x 300 x 135	#	204
150	16	3 x 400 x 135	6 x 250 x 135 and 6 x 200 x 135	#	205
150	20	4 x 400 x 135	6 x 150 x 135 and 9 x 200 x 135	#	206

84390

Tool Cabinets with Sliding Doors Series 140 (Empty)



Type

Empty housing, sturdy welded sheet steel, **double width of series 70 (1410 mm)**. For use as machine cabinet for local storage. This cabinet is characterised by the compact and space-saving design. Inside fitting (2 x 900 mm height) and drawers, retractable shelves and storage shelves are similar to those of the tool cabinets of the series 70. Inner dimensions: 2 storage compartments. With 2 smooth-running sliding doors, double edged and reinforced, safety cylinder lock.

Standard finish:

Housing RAL 7035 light grey, sliding doors RAL 5012 light blue. Further finishes in RAL 3003, 3020, 5013, 5015, 9005 and 7040 without additional cost (not in stock).

Note:

Drawers of series 70, 84415 and 84418 but without drawer stop, can be inbuilt as well.

84390



Fitting example

External dimensions H x W x D mm	Useable housing height mm	84390	...
1019 x 1410 x 790	2 x 900	F #	501

84392 - 84394

Accessories for tool cabinets with drawers and sliding doors, series 140 cat.-no. 84390



84392

Retractable shelf

Type

Roller ball bearing slides, complete with guiding rails. Unit height 80 mm, Useable height 80 mm.

EA 80 = 93 % extension, 80 kg load capacity.

Perforated base, side panels with slotted strips on 3 sides. Effective area 600 x 600 mm.

84393

Retractable shelf

Type

Similar to cat.-no. 84392, but with **VA 200 = 100% extension, 200 kg load capacity.**

84394

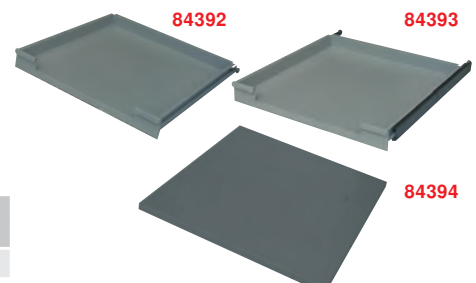
Storage shelf

Type

Sheet steel, adjustable in height, increments 25:25 mm. Load capacity 100 kg. Effective area W x D 600 x 600 mm.

Standard finish: RAL 7035 light grey.

Further finishes in RAL 3003, 3020, 5012, 5013, 5015, 9005 and 7040 without additional cost (not in stock).



84392	...	84393	...	84394	...
#	101	#	101	#	101



Info

Drawer shelving

As an recommended alternative and completion to tool cabinets. 4 heights from 1950 - 3000 mm for ideal usage of space. The shelving units with 2 unit widths 655 and 955 mm, with drawers and storage shelves in any number, can be sidewise extended as required.

Basic elements are the drawers, or steady storage shelves. The programme is completed by a wing door, rear and side panels and other accessories. Optional assembly of a rail sliding safety ladder allows easy access to higher positioned shelves.

Please contact us for price information.



84400

Cabinet Frames Series 50



Type

Cabinet frame made of quality fine sheet steel 1,0 mm thick, solid and precision design, special stiffened parts provide necessary stability. Cover made of sheet steel, **with centralised locking drawer lock** (only one drawer can be opened at any one time), **but without drawers** and without slides, variable configuration of drawers with different front heights.

Standard finish:

RAL 7035 light grey.

Further finishes in RAL 3003, 3020, 5012, 5013, 5015, 6011, 9005 and 7040 without additional cost (not in stock).

Note:

The sum of the drawer front heights must be the same as the useable height of the housing.

84400



External dimensions H x W x D mm	Useable housing height mm	84400	...
519 x 555 x 736	400	F #	601
819 x 555 x 736	700	F #	602
1019 x 555 x 736	900	F #	603

84405

Drawer series 50/EA 80



Type

Roller ball bearing slides, complete with guiding rails **EA 80 = 93 % extension, 80 kg load capacity.** Perforated base, side panels equipped with slotted strips (increments 25 mm). Internal drawer dimension W x D 450 x 600 mm.

Standard finish:

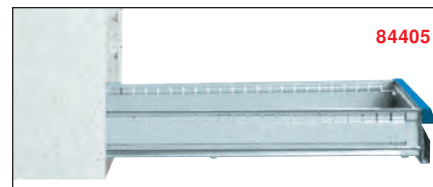
Drawer inside RAL 7035 light grey, front panel RAL 5012 light blue.

Further finishes of front panels in RAL 3003, 3020, 5013, 5015, 7035, 9005 and 7040 without additional cost (not in stock).

Note:

Drawers with 200 kg load capacity on request.

84405



Front height mm	Useable height mm	Unit height mm	84405	...
50	30	30	#	501
75	55	55	#	502
100	80	80	#	503
125	105	80	#	504

Front height mm	Useable height mm	Unit height mm	84405	...
150	130	130	#	505
175	155	130	#	506
200	180	180	#	507



84410

Cabinet Frames Series 70



Type

Cabinet frame made of quality fine sheet steel 1,0 mm thick, solid and precision design. Special reinforcements provide necessary stability. Cover made of sheet steel, **with centralised locking drawer lock** (only one drawer can be opened at any one time), **but without drawers** and without slides, variable configuration of drawers with different front heights and load capacities.

Standard finish:

RAL 7035 light grey.
Further finishes in RAL 3003, 3020, 5012, 5013, 5015, 6011, 9005 and 7040 without additional cost (not in stock).

Note:

The sum of the drawer front heights must be the same as the useable height of the housing.

84410



External dimensions H x W x D mm	Useable housing height mm	84410	...
519 x 705 x 736	400	F #	601
819 x 705 x 736	700	F #	602
1019 x 705 x 736	900	F #	603
1319 x 705 x 736	1200	F #	604
1519 x 705 x 736	1400	F #	605

84415

Drawers series 70 and 140/EA 80



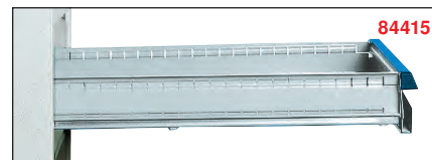
Type

Roller ball bearing slides, complete with guiding rails, **EA 80 = 93 % extension, 80 kg load capacity**. Perforated base, side panels equipped with slotted strips (increments 25 mm), for individual configuration.

Internal drawer dimensions W x T 600 x 600 mm.

Standard finish:

Drawer inside RAL 7035 light grey, front panel RAL 5012 light blue.
Further finishes of front panels in RAL 3003, 3020, 5013, 5015, 7035, 9005 and 7040 without additional cost (not in stock).



Front height mm	Useable height mm	Unit height mm	RAL 5012 84415	...
50	30	30	#	501
75	55	55	#	502
100	80	80	#	503
125	105	80	#	504

Front height mm	Useable height mm	Unit height mm	RAL 5012 84415	...
150	130	130	#	505
175	155	130	#	506
200	180	180	#	507

84418

Drawers series 70 and 140/VA 200



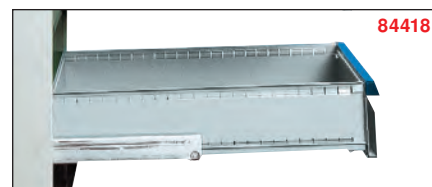
Type

Reinforced roller ball bearing slides, complete with guiding rails, **VA 200 = 100 % extension, 200 kg load capacity**, perforated base. Side panels equipped with slotted strips (increments 25 mm), for individual configuration.

Internal drawer dimensions W x T 600 x 600 mm.

Standard finish:

Drawer inside RAL 7035 light grey, front panel RAL 5012 light blue.
Further finishes of the panels in RAL 3003, 3020, 5015, 7032, 7035 and 9005 without additional cost (not in stock).



Front height mm	Useable height mm	Unit height mm	RAL 5012 84418	...
75	55	55	#	502
100	80	80	#	503
125	105	80	#	504
150	130	130	#	505

Front height mm	Useable height mm	Unit height mm	RAL 5012 84418	...
175	155	130	#	506
200	180	180	#	507
300	280	180	#	508
400	380	80	#	510

Info

Tool frame fitting for OPT-I-STORE hard foam insert



Type

- Two colour fitting frame made of polyethylene (PE)
- Light, durable, water repellent, oil resistant
- With damping properties
- Colour, black / blue
- The hard foam is durable, odour neutral and food safe

Use

For a clearly simple arrangement and protected storage of tools in the drawers.

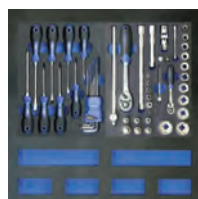


Figure shows the tool frame fitting with 2x OPT-I-STORE hard foam insert 260x345 mm:
- Hexagon socket set (cat.-no. 59665)
- Screwdriver / pin spanner set (cat.-no. 59670)



84420

Cabinet Frames Series 100



Type

Cabinet frame made of quality fine sheet steel 1,0 mm thick, solid and precision design. Special profile reinforcements for necessary stability, cover made of sheet steel, **with centralised locking and drawer lock**, (only one drawer can be opened at any one time), **but without drawers** and without slides, variable configuration of drawers with different front heights and load capacities.

Standard finish:

RAL 7035 light grey.

Further finishes in RAL 3003, 3020, 5012, 5013, 5015, 6011, 9005 and 7040 without additional cost (not in stock).

Note:

The sum of the drawer front heights must be the same as the useable height of the housing.

84420



External dimensions H x W x D mm	Useable housing height mm	84420	...
819 x 1005 x 736	700	F #	600
1019 x 1005 x 736	900	F #	601
1319 x 1005 x 736	1200	F #	602
1519 x 1005 x 736	1400	F #	603

84425

Drawer series 100/EA 80



Type

Roller ball bearing slides, complete with guiding rails, **EA 80 = 93 % extension, 80 kg load capacity**. Perforated base. Side panels equipped with slotted strips (increments 25 mm), for individual configuration.

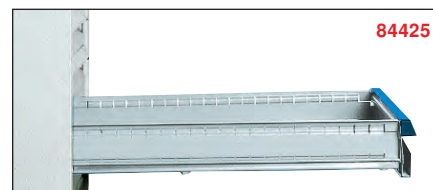
Internal drawer dimensions W x D 900 x 600 mm.

Standard finish:

Drawer inside RAL 7035 light grey, front panel RAL 5012 light blue.

Further finishes of front panels in RAL 3003, 3020, 5013, 5015, 7035, 9005 and 7040 without additional cost (not in stock).

84425



Front height mm	Useable height mm	Unit height mm	84425	...
50	30	30	#	501
75	55	55	#	502
100	80	80	#	503
125	105	80	#	504

Front height mm	Useable height mm	Unit height mm	84425	...
150	130	130	#	505
175	155	130	#	506
200	180	180	#	507

84428

Drawer series 100/VA 200



Type

Reinforced roller ball bearing slides, complete with guiding rails, **VA 200 = 100 % extension, 200 kg load capacity**. Perforated base. Side panels equipped with slotted strips (increments 25 mm), for individual configuration.

Internal drawer dimensions W x D 900 x 600 mm.

Standard finish:

Drawers inside RAL 7035 light grey, front panel RAL 5012 light blue.

Further finishes of front panels in RAL 3003, 3020, 5013, 5015, 7035, 9005 and 7040 without additional cost (not in stock).

84428



Front height mm	Useable height mm	Unit height mm	84428	...
75	55	55	#	502
100	80	80	#	503
125	105	80	#	504
150	130	130	#	505

Front height mm	Useable height mm	Unit height mm	84428	...
175	155	130	#	506
200	180	180	#	507
300	280	180	#	508
400	380	80	#	510

LARGE SELECTION – SIMPLE SEARCH

Always remember! CATALOGUE VOLUME [1]

The specialist catalogue for machining and clamping technology.

Experience our extensive product range of quality tools from **ATORN**.

ATORN® Performance requires quality



Series 50 / 70 / 100 / 140 (cat.-no. 84450 - 84478)

84450

Compartment Rails

Type

Sheet steel, equipped with slotted strips on both sides. Grid spacing 25 mm.

Standard finish:

RAL 7035 light grey, powder-coated.

Use

For drawers of series 50/70/100/140.

Note:

For reasons of stability, the compartment rails can be screwed to drawer base (see cat.-no. 84455 - 84456).

84450



For front height mm	For drawer height mm	Length mm	84450	...
50	30	596	#	601
75	55	596	#	602
100/125	80	596	#	603
150/175	130	596	#	604
200	180	596	#	605

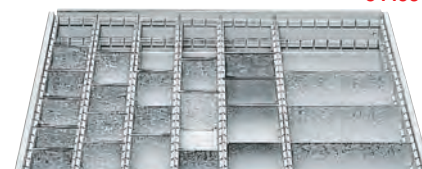
84453

Compartment Dividers

Type

Made of galvanised sheet steel, for inserting into compartment rails. **Pack = 5 pcs.**

84453



For front height mm	For drawer height mm	Length mm	84453	...
50	30	50	#	111
50	30	75	#	112
50	30	100	#	113
50	30	150	#	114
75	50	50	#	211
75	50	75	#	212
75	50	100	#	213
75	50	150	#	214
75	50	200	#	215
100/125	75	50	#	311
100/125	75	75	#	312
100/125	75	100	#	313
100/125	75	150	#	314

For front height mm	For drawer height mm	Length mm	84453	...
100/125	75	200	#	315
100/125	80	225	#	316
100/125	75	300	#	318
150/175	125	100	#	411
150/175	125	150	#	412
150/175	125	200	#	413
150/175	130	225	#	414
150/175	125	300	#	416
200	175	100	#	511
200	175	150	#	512
200	175	200	#	513
200	180	225	#	514
200	175	300	#	516

84455 - 84456

Fasteners

Type

Pack = 100 pcs.

84455

Hexagon nuts

M 3 with rotating locking device.

84455

84456

Threaded studs

M 3 x 6, as flat head screw. Suitable for all fittings.

84456

Hexagon nuts		Threaded stud	
84455	...	84456	...
#	101	#	101



continuation ►



Drawer fittings

84457

Tray plates

Type

Basic dimension 150 x 150 x 30 mm, made of red impact-proof polystyrene, **connectable**, slotted strips 14:14 mm, for mounting trough dividers cat.-no. 84459.

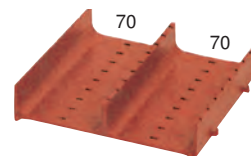
Use

For storing fragile items up to Ø 70 mm, e.g. cutting tools.

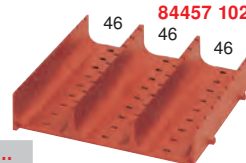
Note:

Number of tray plates per drawer for
series 50 = 3 packs,
series 70 = 4 packs,
series 100 = 6 packs,
The tray plates are mounted in length and cross direction.

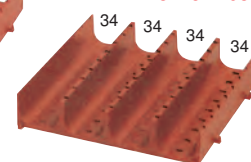
84457 101



84457 102



84457 103



Number of trays	Tray width mm	pack = pcs.	84457	...
2	70	4		101
3	46	4		102
4	34	4		103

84458

Compensators

Type

U-shaped rails, lacquered.

Use

For front and sidewise compensation when using tray plates in the drawers.

84458



For tool cabinets series	Pack = pcs.	84458	...
50	1	#	101
70	2	#	102
100	2	#	103

84459

Tray dividers

Type

Made of red impact-proof polystyrene with labelling tab.

Use

For division or limiting of tray plates cat.-no. 84457.

84459 101



84459 102



84459 103



For tray width mm	Pack = pcs.	84459	...
70	10		101
46	20		102
34	25		103

84462

Compartments for Small Parts

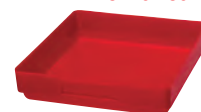
Type

Made of red impact-proof plastics, polystyrene. Unit height 28 mm.

Note:

Useable for drawers with a front height of min. 50 mm.

84462 301



84462 302



84462 303



Compartment size mm	Pack = pcs.	84462	...
150 x 150	4		301
150 x 75	8		302
75 x 75	16		303

84465

Compartments for Small Parts

Type

Made of red impact-proof plastics, polystyrene. Unit height 65 mm.

Note:

Useable for drawers with a front height starting at 100 mm.

84465 101



84465 102



84465 103



Compartment size mm	Pack = pcs.	84465	...
150 x 150	4		101
150 x 75	8		102
75 x 75	16		103

84468**Tool holder and holding pins****84468 201****Tool holder****Type**

Made of red plastics, polystyrene.

Use

For tools with different Ø.

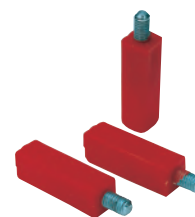
Can be mounted on pins.

84468 202**Holding pins****Type**

With screw M 3.

Use

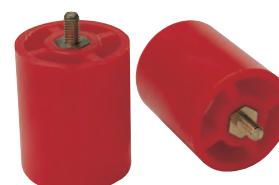
For tool holder.

84468 201**84468 202**

Size mm	84468	...
38 x 15 x 4	#	201
10 x 6 x 6	#	202

84471**Spindle Sleeves****Type**

Height 26 mm. Made of red plastics, with embedded screw and nut M 3. The sleeves can be screwed onto each other.

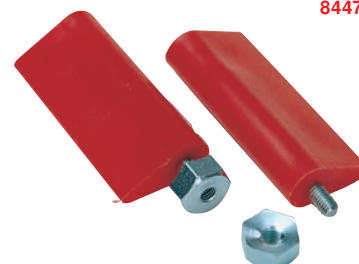
84471

Ø mm	Pack = pcs.	84471	...
12	10	#	101
15	10	#	102
20	10	#	103

Ø mm	Pack = pcs.	84471	...
25	5	#	104
30	5	#	105
39	5	#	106

84474**Holding pins****Type**

Made of red plastics, conical shape, with embedded M 3 screw.

84474

Size H x L mm	84474	...
36 x 16	#	201

84476**Threaded Studs****Type**

Made of steel, cadmium-plated.

Use

E.g. for storing tool tags.

84476

Size L x Ø mm	Pack = pcs.	84476	...
29 x 2.5	20		101

84478**Spare Rail Covers****Type**

Aluminium. With transparent cover and white paper strips.

Use

For standard tool cabinets series 50/70/100.

Note:

Starting at the construction year 2000.

84478

For series	84478	...
50	#	101
70	#	102
100	#	103



84560 - 84562 Computer stations with monitor housing**Type**

- Stable and warp-free sheet steel housing
- Housing at the top with keyboard compartment (H 120 mm) incl. lockable front hatch and pull-out shelf for positioning the keyboard and mouse
- Housing at the bottom with wing doors (H 850 mm) incl. lockable door (3-fold locking)
- Cable ducts on the back of the housing, in the cover as well as the inner section
- Pull-out shelf (storage area B 570 x T 450 mm) on precision sliding rails, load capacity 20 kg, extension 80 %
- Monitor housing with lockable monitor compartment
- Monitor compartment with viewing window (viewing window W 480 x H 430 mm)
- An open storage compartment underneath the monitor compartment (H 140 mm)
- Environmentally friendly powder coating RAL 7035/5010, light grey / gentian blue

84560 101**Type**

Monitor housing with a depth of 250 mm.

84560 102**Type**

Monitor housing with a depth of 520 mm.

Note:

Roller set see cat.-no. 84562.

84562**Roller set****Type**

- 2 support and 2 steering rollers with brake
- Wheel body made from polypropylene, grey
- Roller Ø 100 mm with plain bearing
- Tread (W 30 mm) made from thermoplastic rubber, grey, non-marking, 85° Shore A

Use

For computer stations cat.-no. 84560 and 84561.

84560 101**84560 102****84560 101 + 84562**

	Dimensions H x W x D mm	Monitor housing H x W x D mm	Monitor compartment inside H x W x D mm	84560	...	84562	...
Computer station	1770 x 650 x 520	710 x 650 x 250	530 x 635 x 230	F #	101		
Computer station	1770 x 650 x 520	710 x 650 x 520	530 x 635 x 500	F #	102		
Roller set	-	-	-			#	101

84561 - 84562 Computer station**Type**

- Stable and warp-free sheet steel housing
- Housing at the top with keyboard compartment (H 120 mm) incl. lockable front hatch and pull-out shelf for positioning the keyboard and mouse
- Housing at the bottom with wing doors (H 850 mm) incl. lockable door (3-fold locking)
- Cable ducts on the back of the housing, in the cover as well as the inner section
- Pull-out shelf (storage area W 570 x D 450 mm) on precision sliding rails, load capacity 20 kg, extension 80 %
- Environmentally friendly powder coating RAL 7035/5010, light grey / gentian blue

Note:

Roller set see cat.-no. 84562.

84562**Roller set****Type**

- 2 support and 2 steering rollers with brake
- Wheel body made from polypropylene, grey
- Roller Ø 100 mm with plain bearing
- Tread (W 30 mm) made from thermoplastic rubber, grey, non-marking, 85° Shore A

Use

For computer stations cat.-no. 84560 and 84561.

84561

	Dimensions H x W x D mm	84561	...	84562	...
Computer station	1060 x 650 x 520	F #	101		
Roller set	-			#	101

84565

Monitor housing

Type

- Stable and warp-free sheet steel housing
- Housing with lockable monitor compartment
- Monitor compartment with viewing window (viewing window W 545 x H 495 mm)
- Monitor compartment incl. fan and filter mat (ventilation and dust protection)
- An open storage compartment underneath the monitor compartment (H 140 mm)
- Cable ducts on the base of the monitor compartment
- Environmentally friendly powder coating RAL 7035/5010, light grey / gentian blue

Use

The monitor housing can be used on worktables, workbenches, etc.

84565 101

84565 102



84565 101

Type

Monitor housing with a depth of 300 mm.

84565 102

Type

Monitor housing with a depth of 550 mm.

Dimensions H x W x D mm	Monitor compartment inside H x W x D mm	84565	...
710 x 720 x 300	530 x 705 x 280	F #	101
710 x 720 x 550	530 x 705 x 530	F #	102

84570

Computer Cabinets (Empty)



Type

Cabinet housing made of sheet steel, powder-coated. Back wall with air vents and fan. Lockable door, with acrylic glass window in the top part (H x W 320 x 420 mm), below that spot-welded keyboard drawer in ergonomic height incl. of lid and mouse drawer. 3 adjustable shelves inside.

Use

For a safe and secure flat-screen workplace in the workshop.

84570 101

Type

Fixed. With projecting base 750 mm.
With cover made of corrugated sheet steel.

84570 102

Type

Mobile. With projecting base 750 mm.
With cover made of corrugated sheet steel.
Base with 4 steering wheels, 2 of which with stop lock. Roller Ø 75 mm.

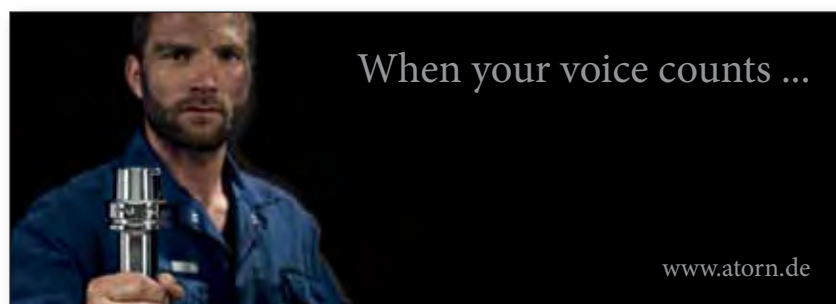
84570 101

84570 102



Facility Equipment

Dimensions H x W x D mm	Number of shelves	Number of wheels	84570	...
1750 x 550 x 420	3	-	F #	101
1850 x 550 x 420	3	4	F #	102



When your voice counts ...

www.atorn.de

... your suggestions are heard.

ATORN®
Performance requires quality



84601 - 84603

Cabinets for local storage with drawers (width 500 mm + 930 mm)



Möbel für Menschen

84601 - 84602

Type

- Steel construction with long service life
- Very good operating safety, wear resistant and attractive optic due to the handle lock Ergo-Lock (3-bolt lock) in black with 2 keys
- Including rubber ribbed mats at the top and flanged edge
- Door hinges with approx. 110° opening angle
- Door reinforcement in the middle for high door stability
- High flexibility of the interior equipment by adjustability in 15 mm grid pattern
- Load capacity per drawer 25 kg
- High capacity per galvanised shelf 70 kg

Note:

Drawers with front height 82 mm =

Clear internal dim. H x W x D: 70 x 367 x 438 mm

Drawers with front height 125 mm =

Clear internal dim. H x W x D: 115 x 367 x 438 mm

Drawers with front height 170 mm =

Clear internal dim. H x W x D: 125 x 367 x 438 mm

84603

Drawer fittings

Type

- Plastic boxes for small parts
- Approx. 54 mm high

Use

Cabinets for local storage cat.-no. 84601 and 84602.



84603



Wear resistant and ergonomic, attractive optic



Ergo-Lock recessed handle lock, registered for patent



84601 602



84601 603



84601 604



84601 605



84602 602



84602 603



84602 604



84602 605

84603

Drawer fittings

#

101

External dimensions H x W x D mm	Colour RAL	Drawers 82 mm	Drawers 125 mm	Drawers 170 mm	Shelves strength 24 mm	Width 500 mm	
						84601	...
1000 x 500 x 500	7035	1	1	-	1	F #	502
1000 x 500 x 500	7035/5012	1	1	-	1	F #	602
1000 x 500 x 500	7035	-	1	4	-	F #	503
1000 x 500 x 500	7035/5012	-	1	4	-	F #	603
1000 x 500 x 500	7035	2	1	3	-	F #	504
1000 x 500 x 500	7035/5012	2	1	3	-	F #	604
1000 x 500 x 500	7035	8	1	-	-	F #	505
1000 x 500 x 500	7035/5012	8	1	-	-	F #	605

External dimensions H x W x D mm	Colour RAL	Drawers 82 mm	Drawers 125 mm	Drawers 170 mm	Shelves strength 24 mm	Width 930 mm	
						84602	...
1000 x 930 x 500	7035	4	1	2	2	F #	502
1000 x 930 x 500	7035/5012	4	1	2	2	F #	602
1000 x 930 x 500	7035	-	2	8	-	F #	503
1000 x 930 x 500	7035/5012	-	2	8	-	F #	603
1000 x 930 x 500	7035	-	1	4	2	F #	504
1000 x 930 x 500	7035/5012	-	1	4	2	F #	604
1000 x 930 x 500	7035	2	2	-	2	F #	505
1000 x 930 x 500	7035/5012	2	2	-	2	F #	605

Type

- shock and scratch-proof plastic coating
- Housing RAL 7035 light grey
- Doors and drawers RAL 5012 light blue
- Double-walled reinforced doors, opening over 180°
- Double-walled drawer panels
- Stamped drawer base
- Galvanised shelves
- Security cylinder lock
- Ball-bearing telescopic rails

Use

Due to their attractive modern design, these cabinets can be used everywhere. Not only in warehouses and workshops, but also in offices or doctor's offices, or as counters in show rooms. Thanks to common dimensions, the cabinets can be extended and customised at will.

Note:

Fig. with corrugated rubber covering as an option (cat. no. 84672).

84670 601



Double wall reinforced door with perforated plate

84670 603-604

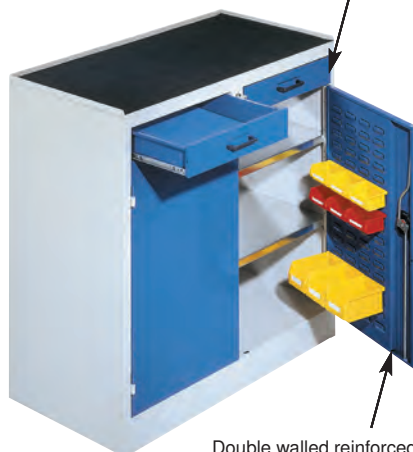


84670 605



Drawers guided on telescopic rails

84670 610



Double-walled drawer panels

Double walled reinforced door with slotted panel

84670 620



Double walled reinforced doors

External dimensions H x W x D mm	Inside of door perforated panel	Inside of door slotted panel	With shelves	With drawers	With safe box	84670	...
1000 x 500 x 500	X	-	2	1	-	F #	601
1000 x 500 x 500	-	X	2	1	-	F #	602
1000 x 500 x 500	X	-	1	3	-	F #	603
1000 x 500 x 500	-	X	1	3	-	F #	604
1000 x 500 x 500	-	-	-	9	-	F #	605
1000 x 1000 x 500	X	X	2	2	-	F #	610
1950 x 1000 x 500	-	-	4	15	1	F #	620

84672

Accessories for workplace tool cabinets cat.-no. 84670

84672 101



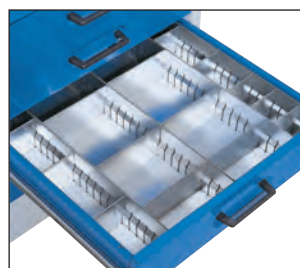
Desktop

84672 102-103



Corrugated Rubber Covering

84672 104



Drawer fittings

84672 105



Mobile frame

	Length x Width mm	84672	...
Desktop RAL 7035/5012	500 x 500	#	101
Corrugated rubber covering, black	500 x 500	#	102
Corrugated rubber covering, black	1000 x 500	#	103

	Length x Width mm	84672	...
Drawer fittings, thin sheet metal	-	#	104
Mobile frame RAL 7035	500 x 500	#	105



84835 - 84842

Sliding door cabinets with shelves

**HHW**

84835 - 84839

Type

- Stable sheet steel construction with full sheet metal doors or doors with windows
- Reinforced doors with recessed grip, safely guided in the upper guide rail
- With crush guard, resting on buffers
- Centralised locking with turn-and-push cylinder lock (including 2 keys)
- Including galvanised shelves
- Adjustable in height, 17 mm grid pattern
- Load capacity per shelf 80 kg at equal distribution

Finish:

Housing RAL 7035 light grey, doors RAL 5012 light blue.

Further colours available on request.

Note:

Additional shelves see cat.-no. 84842.

84842

Shelves**Type**

- Galvanised
- 4 shelf supports included
- Load capacity per shelf 80 kg at equal distribution

Use

For sliding door cabinets cat.-no. 84835 and 84839.

84835 612

1000



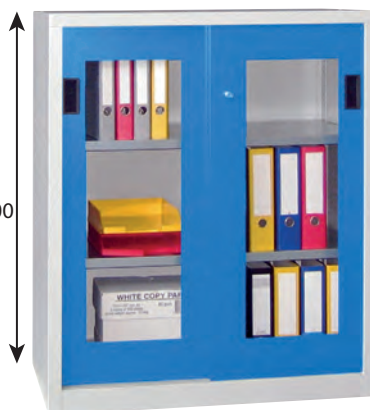
84839 625

1950



84839 615

1200



84842



Sheet metal doors

Doors with windows

Shelves

H x W x D mm	Compartment divider	Number of shelves	Overall load kg	84835	...	84839	...	84842	...
1000 x 1000 x 400	-	2	400	F # 607	NEW	F # 607	NEW	# 103	NEW
1000 x 1000 x 500	-	2	400	F # 601		F # 601		# 101	
1000 x 1000 x 600	-	2	400	F # 608	NEW	F # 608	NEW	# 104	NEW
1000 x 1500 x 400	x	4	600	F # 609	NEW	F # 609	NEW	# 107	NEW
1000 x 1500 x 500	x	4	600	F # 602		F # 602		# 102	
1000 x 1500 x 600	x	4	600	F # 610	NEW	F # 610	NEW	# 108	NEW
1000 x 2000 x 400	x	4	600	F # 611	NEW	F # 611	NEW		
1000 x 2000 x 500	x	4	600	F # 603		F # 603		# 101	
1000 x 2000 x 600	x	4	600	F # 612	NEW	F # 612	NEW		
1200 x 1000 x 400	-	2	400	F # 613	NEW	F # 613	NEW	# 103	NEW
1200 x 1000 x 500	-	2	400	F # 614	NEW	F # 614	NEW	# 101	
1200 x 1000 x 600	-	2	400	F # 615	NEW	F # 615	NEW	# 104	NEW
1200 x 1500 x 400	x	4	600	F # 616	NEW	F # 616	NEW	# 107	NEW
1200 x 1500 x 500	x	4	600	F # 617	NEW	F # 617	NEW	# 102	
1200 x 1500 x 600	x	4	600	F # 618	NEW	F # 618	NEW	# 108	NEW
1200 x 2000 x 400	x	4	600	F # 619	NEW	F # 619	NEW		
1200 x 2000 x 500	x	4	600	F # 620	NEW	F # 620	NEW	# 101	
1200 x 2000 x 600	x	4	600	F # 621	NEW	F # 621	NEW		
1950 x 1000 x 400	-	4	400	F # 622	NEW	F # 622	NEW	# 103	NEW
1950 x 1000 x 500	-	4	400	F # 604		F # 604		# 101	
1950 x 1000 x 600	-	4	400	F # 623	NEW	F # 623	NEW	# 104	NEW
1950 x 1500 x 400	x	8	600	F # 624	NEW	F # 624	NEW	# 107	NEW
1950 x 1500 x 500	x	8	600	F # 605		F # 605		# 102	
1950 x 1500 x 600	x	8	600	F # 625	NEW	F # 625	NEW	# 108	NEW
1950 x 2000 x 400	x	8	600	F # 626	NEW	F # 626	NEW		
1950 x 2000 x 500	x	8	600	F # 606		F # 606		# 101	
1950 x 2000 x 600	x	8	600	F # 627	NEW	F # 627	NEW		

continuation



84841

On-top cabinets for sliding door cabinets cat.-no. 84835 - 84842



continuation ▶

84841

On-top cabinets

- Type**
- Doors with reinforced recessed grip
 - Guided safely in the top guide profile on special ball bearing rollers
 - With crush guard, resting on buffers

- Centralised locking with turn-and-push cylinder lock
- In order to prevent the on-top-cabinet from slipping, it must be secured to the bottom cabinet (fixing material is provided)

NEW

84841



H x W x D mm	Compartment divider	84841	...
440 x 1000 x 400	-	F #	101
440 x 1000 x 500	-	F #	102
440 x 1000 x 600	-	F #	103
440 x 1500 x 400	X	F #	104
440 x 1500 x 500	X	F #	105
440 x 1500 x 600	X	F #	106
440 x 2000 x 400	X	F #	107
440 x 2000 x 500	X	F #	108
440 x 2000 x 600	X	F #	109

84752 - 84755

Drawer Cabinets (Empty)



Type

Made of high-quality sheet steel, centralised locking with drawer lock, smooth running drawers. Ball-bearing mounted drawers with 80 % extension, loading per drawer 35 kg. Drawer rails can be marked over the whole width.

Powder-coating:

RAL 7035 light grey/ RAL 5012 light blue, powder-coated.

Internal drawer dimensions:

W x D 440 x 430 mm, height 90/190 mm.

84752

84755



Dimensions H x W x D mm	Drawers number of x drawer height mm	84752	...	84755	...
900 x 1000 x 500	12 x 100 / 2 x 200	F #	601		
1800 x 1000 x 500	18 x 100 / 8 x 200			F #	601

Facility Equipment

SAFETY FIRST! The current PSA catalogues





HHW

84837

Type

Sturdy sheet steel design. Reinforced doors with recessed grip, safely guided in the upper guide rail, with crush guard, resting on buffers, centralised locking with turn-and-push cylinder lock (incl. of 2 keys).

Finish:

Housing RAL 7035 light grey, doors RAL 5012 light blue. Further colours available on request.

Note:

Suitable accessories see cat.-no. 84845.



84837 601-602

Fitting example



84837 603-604

Fitting example

Empty housing H x W x D mm	Compartment divider	Overall load kg	84837	...
1000 x 1000 x 600	X	600	F #	601
1000 x 2000 x 600	X	600	F #	602
1950 x 1000 x 600	X	600	F #	603
1950 x 2000 x 600	X	600	F #	604

84845 101-206

Accessories

Use

For sliding door cabinets cat.-no. 84837.

84845 101+201

Shelf galvanised

Type

30 mm thick, 4 shelf supports included. Load capacity per shelf 80 kg at equal distribution. Adjustable in height, 17 mm grid pattern.

84845 102+202

Shelf powdered

Type

30 mm thick, 4 shelf supports included. Load capacity per shelf 80 kg at equal distribution. Adjustable in height, 17 mm grid pattern.

84845 103+203

Tray powdered

Type

Height 35 mm, 100% extension. Adjustable in height, 17 mm grid pattern.

84845 104+204

Drawer powdered

Type

Height 75 mm, 100% extension. Adjustable in height, 17 mm grid pattern.

84845 105+205

Corrugated rubber mat

Type

3 mm thick, black, included.

84845 106+206

Counter top

Type

16 mm thick, grey, melamine-resin coated, assembled.



84845 101+201



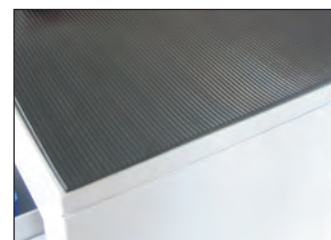
84845 102+202



84845 103+203



84845 104+204



84845 105+205



84845 106+206

Accessory	For width 1000 mm		for width 2000 mm	
	84845	...	84845	...
Shelf galvanised	#	101	#	201
Shelf powdered	#	102	#	202
Tray	#	103	#	203
Drawer	#	104	#	204
Corrugated rubber mat	#	105	#	205
Counter top	#	106	F #	206

