

68008

## Skin protection cream LINDESA®

LINDESA®

## Type

- Slightly oily, fast-penetrating Skin protection and care cream with natural beeswax
- The skin's barrier function is strengthened

- Protection against skin damage through external stress
- Also contains camomile
- Silicone-free, does not leave grease marks.

## Use

For lower levels of stress and for care.

68008



## Contents

68008

...

50 ml tube

#

201

68001

## Skin protection cream pr88® / skin protection fluid pr88® liquid

rath's  
ARBEITSCHUTZ UND WEGAR

## Type

- Non-oily, water-soluble, silicone-free skin protection cream with barrier function between skin and work material
- No residue
- Skin functions, such as moisture release, sense of touch are not impaired.

## Use

Highly-adhesive contamination through oil, varnish, tar and bitumen, artificial resin, silicone and glues.

68001 101-102

Skin protection cream in the tin.

68001 103

Skin protection fluid in the spray bottle.

68001 102

68001 103

68001 101



## Contents

68001

...

100 ml tin

#

101

150 ml spray bottle

#

103

1 l tin

#

102

68006

## Skin protection cream / lotion Ligana®

GREVEN

68006 101-102

Ligana® REMO-tec

## Type

- Water-soluble skin protection cream, no residue
- Protective film prevents adhesion of dirt and facilitates wash-up
- Free of oil and silicone.

## Use

Highly adhesive oily or dry contamination due to old oil, varnish, paints, tar and bitumen.

68006 201-202

Ligana® MULTI-tec

## Type

- Skin protection lotion with barrier function against water-soluble and water-insoluble substances
- In addition D-panthenol and vitamin E have an inflammation inhibiting effect and support the natural regeneration of the skin
- Silicone-free.

## Use

For skin hazards that are not clearly defined or when using different types of work materials, when wearing gloves.

68006 202

68006 102



68006 201

68006 101

## Product

## Contents

68006

...

REMO-tec

100 ml tube

#

101

REMO-tec

2000 ml vario bottle

#

102

MULTI-tec

100 ml bottle

#

201

MULTI-tec

2000 ml vario bottle

#

202

68002 - 68003

## Skin protection cream

STOKO

68002

Skin protection cream Travabon® classic

## Type

Water-soluble, grease and silicone-free, high proportion of solid substances, dirt-bonding, scented. Facilitates skin cleaning thanks to dirt-bonding emulsifier. Increased protection thanks to skin care pigments. Non-slip.

## Use

Protection when working with oily, water-insoluble materials, such as oil, varnish, graphite, metal dust, soot.

68003

Skin care cream Stokoderm® aqua

## Type

Soft cream with repair effect protects the skin when working in a wet environment. Slightly oily and quickly absorbed. Stabilises and regenerates the skin barrier.

## Use

For contact with aqueous work materials, such as cooling lubricant and aqueous solution, when wearing gloves and enclosed protective clothing.

68003 102

68002 102



68002 101



68003 101

## Contents

Travabon® classic

68002

...

Stokoderm® aqua

68003

...

100 ml tube

#

101

#

101

1000 ml soft bottle

#

102

#

102



68000

Hand cleanser

**REINOL®**

**Type**  
Sandless, slightly acidic.  
Contains skin care protection.

**Use**  
For cleaning the skin from heavy dirt.

**Note:**  
Very good cleaning effect with skin care, even under very dirty conditions.

68000 102

Contents	68000	...
500 ml tin	#	101
10 l bucket	#	102

68000 101



68010 - 68011

Hand cleansers and dispensers

**HHW**

**68010**  
Hand cleanser

**Type**  
The HHW hand cleanser® is moisturising, pH-neutral, dermatologically tested and has a sustainable protective skin effect; soap and solvent free.

**Use**  
Severe contamination through oil, grease, tar, paints and bitumen.

**68011 101**  
**Dispenser**  
For 3 l-tin incl. wall fixture and screws.

**68011 102**  
**Dispenser**  
For 10 l-bucket.

68010 102 + 68011 102

Contents	Cleanser		Dispenser	
	68010	...	68011	...
3 l tin	#	101	#	101
10 l bucket	#	102	#	102

68010 101 + 68011 101



68024

Skin cleaning lotion Ivrxaxo®

**GREVEN**

**68024 101-102**  
Ivrxaxo® Soft B

**Type**  
- Skin cleaning lotion, free of abrasive agents with high cleansing power and skin-adjusted pH value  
- Moisturising, free of soaps and solvents.

**Use**  
For moderate to severe contamination due to grease, oil, metal dust or soot, for example.

**68024 201-202**  
**Ivrxaxo® Active Pearls**  
**Type**  
- Hand cleanser with dirt-binding, soft castor-oil plant wax pearls ASP (Active Soft Pearls)  
- Without sharp edges or hard abrasives, thus less skin stress than is the case when using conventional abrasive skin cleansers  
- Free of soaps and solvents.  
**Use**  
For severe contamination through grease, oil, metal dust or soot. Recommended for frequent hand-washing.

68024 102

Product	Contents	68024	...
Soft B	250 ml bottle		101
Soft B	2000 ml vario bottle		102
Active Pearls	250 ml bottle	#	201
Active Pearls	2000 ml vario bottle	#	202

68024 202



68024 101



68024 201



68005

Hand cleanser

**STOKO**

**Note:**  
STOKO VARIO dispenser for 1000 ml or 2000 ml soft bottle see cat.-no 68030.

**68005 101**  
Hand cleanser Kresto® classic

**Type**  
With special solvent. Paste with abrasive agent ASTOPON® (refined walnut shell powder), with skin protection substance EUCORNOL®. Extremely high cleaning performance.

**Use**  
For extremely severe contamination, due to oil, grease, lubricants, for example.

**68005 100+103**  
**Hand cleanser Solopol® strong**  
**Type**  
Paste with abrasive agent Astopon® (refined walnut shell powder) and skin protection substance EUCORNOL®, as well as aloe vera. Gentle on the skin, extremely high cleansing power.  
**Use**  
For solvent-free cleaning of hands with a very high proportion of abrasive agents, for extreme contamination due to oil, grease, soot, graphite, lubricants, for example.

**68005 099+102**  
**Hand cleanser Solopol® natural**  
**Type**  
Paste with abrasive agent Astopon® (refined walnut shell powder) and skin protection substance EUCORNOL®, as well as aloe vera. Leaves a tangible feeling of well-cared-for skin.  
**Use**  
For severe contamination, such as oil, grease, soot, metal dust, lubricants.

Product	Contents	68005	...
Kresto® classic	250 ml tube		101
Solopol® strong	250 ml tube	#	100
Solopol® strong	2000 ml soft bottle	#	103
Solopol® natural	250 ml tube	#	099
Solopol® natural	2000 ml soft bottle	#	102

68005 099



68005 100



68005 101



68005 102



68005 103



Special Tools / PPE

**68028**

**Skin care cream**

**68028 101-102**

**Special cream C**

**Type**

- Quickly-absorbed cream for care and regeneration of stressed skin
- Moisturising, silicone-free.

**Use**

For highly stressed skin. Suitable for all skin types.

**68028 201-202**

**Ligana® Urea**

**Type**

- Slightly oily and rapidly absorbed care cream for hands and face
- Highly effective regeneration for severely stressed skin
- With urea and beeswax
- Silicone-free, fragrance-free.

**Use**

For heavily-stressed, dry and sensitive skin.



Product	Contents	68028	...
Special cream C	100 ml tube	#	101
Special cream C	2000 ml vario bottle	#	102
Ligana® Urea	50 ml tube	#	201
Ligana® Urea	2000 ml vario bottle	#	202

**68026 - 68027**

**Skin care**

**STOKO**  
ALCOHOL-FREE

**68026**

**Skin care cream Stokolan® classic**

**Type**

- Quickly-absorbed skin cream with soothing and regenerative effect for hands and face
- Excellent skin tolerance with excellent care effect
- Silicone-free.

**Use**

Suitable for highly stressed skin, for all skin types.

**68027**

**Skin Care Gel Stokolan® soft+care**

**Type**

- Intensive moisturising, quickly absorbed care gel for hands and face
- With the endogenous energiser creatine, as well as urea and glycerine
- Silicone-free.

**Use**

For care of normal skin



**Note:**

STOKO VARIO dispenser for 1000 ml or 2000 ml soft bottles see cat.-no 68030.

Product	Contents	68026	...	68027	...
Stokolan® classic	100 ml tube		101		
Stokolan® classic	1000 ml soft bottle		102		
Stokolan® soft+care	100 ml tube			#	201

**68030**

**STOKO® dispenser**

**STOKO**  
ALCOHOL-FREE

**STOKO Mat® vario**

**Type**

Housing made of stainless steel, white coated.

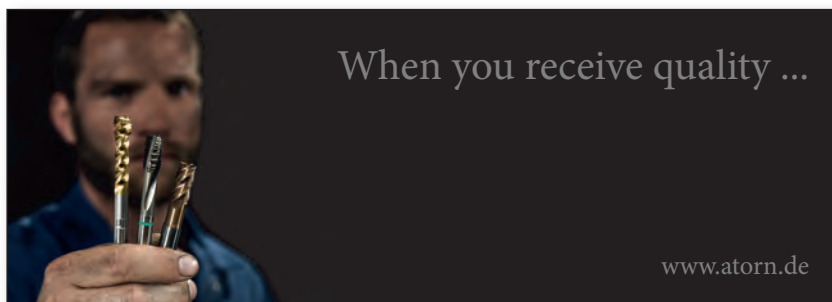
**Use**

Wall dispenser with variable dosing from 1000 ml or 2000 ml soft bottles of the STOKO® skin care products.

H x W x T mm	68030	...
322 x 126 x 140		101



**68030**



When you receive quality ...

www.atorn.de

... then it's ATORN.

**ATORN®**

Performance requires quality



Special Tools / PPE

## Protective gloves

68075

### Nitrile disposable gloves Dermatril®



**Type**

- Disposable nitrile glove, powder-free
- The fingertips are slightly roughened for better grip
- High tear strength
- Non-sterile, can be worn on both sides
- EN 420, EN 374, EN 455, EN 61340-5-1, AQL 0,65, cat. III.

**Use**

In laboratory and research, chemical industry, food and electrical industry, for cleaning and maintenance tasks and for product protection.

68075 100-101

**Dermatril® 740**

**Type**

With rolled edge, overall length approx. 250 mm, layer thickness 0.11 mm.

**In dispenser, 100 pcs.**

68075 200-201

**Dermatril® P 743**

**Type**

With long cuff, overall length approx. 280 mm, layer thickness 0.2 mm.

**In dispenser, 50 pcs.**

68075



Size	Dermatril® 740		Dermatril® P 743	
	68075	...	68075	...
9	#	100	#	200
10	#	101	#	201

68080

### Disposable latex gloves

**Type**

Seamless, powdered, wearable from both sides, in dispenser with 100 pcs.

68080



Size	68080	...
10		101

68085

### Cotton tricot gloves

**Type**

Bleached. Very comfortable, good touch, very flexible. With fingerwalls, inserted thumb, breathable.

**Use**

Immediate recognition of dirt and attrition. Keeps fingerprints off of the product. Can be used as a liner glove as well.

68085



Size	Pack =	68085	...
M (7 - 8)	12 pair	#	101
L (10)	12 pair	#	102
XL (13)	12 pair	#	103

68086

### Assembly gloves

**PROFAS | uvex**

**Type**

Very light, breathable working glove. Effective sense of touch and tactile feel through new shaping.

Fingertips, thumb and palm impregnated with NBR.

**Lining:** Cotton interlock, **coating:** NBR special (nitrile rubber) EN 388, colour white

**Use**

For use in small part assembly, sorting and control working, product protection.

68086



Size	Length approx. cm	Pack =	68086	...
9	27	1 pair		101

68089

### Protective gloves

**PROFAS | uvex**

**Type**

High quality protective glove with great feeling, extremely resistant, seamlessly coated. **Lining:** Cotton interlock, **coating:** NBR special (nitrile-rubber), EN 388.

**Use**

For use in metal working, maintenance, painting, inspection and control environments. Good resistance against oil, fat, and petrol.

68089



Size	Length approx. cm	Pack =	68089	...
9	27	1 pair		101

Special Tools / PPE

**68090****PVC gloves****Type**

High quality glove with cotton tricot lining and PVC coating. **EN 388, cat. II.**

**68090**

Size	Length cm	Pack =	68090	...
10	40	12 pair		<b>101</b>

**68100****Work gloves****Type**

Long model with textile hand back and textile cuff with knuckle protection and rubber draw.

**68100 101**

Artificial leather, lined palm, white drill. Colour yellow.

**68100 102**

Full-grain pigskin, lined palm. **CE cat. I.**

**68100 103**

Furniture leather, top quality, palm reinforcement, canvas cuff, bright colours.

**68100 104****-Bull's head natural-**

Cowhide, top quality, rubberised cuff, lined palm, thickness at least 1.2 mm. **EN 388 cat. II.**

**68100 101**

Size	Pack =	68100	...
10	12 pair	<b>101</b>	
10	12 pair	<b>102</b>	
10	12 pair	<b>103</b>	
10	1 pair	<b>104</b>	

**68100 102****68100 103****68100 104****68107****Protective glove Man at Work® 301****Type**

Glove of textile fabric with polymer coating, sail-cloth cuff and knuckle protection. Sure grip, repels contamination and moisture, washable. Longer service life compared with leather gloves.

**EN 420, EN 388 Level 2111, cat. II.**

**Use**

Construction industry, shipyards, landscaping.

**68107**

Size	Pack =	68107	...
9	10 pair	#	<b>101</b>
10	10 pair	#	<b>102</b>

**68101****Cotton gloves Sahara 100****Type**

Special nitrile coating on the inner surface and on the fingers, moisture repellent, offers high mechanical load capacity.

High-quality cotton tricot on the back of the hand ensures ergonomic fit, optimum wear comfort and excellent breathability. Additional wrist protection thanks to knitted cuff.

**EN 420, EN 388 Level 3111, cat. II.**

**68101**

Size	Pack =	68101	...
7	10 pair	#	<b>101</b>
8	10 pair	#	<b>102</b>
9	10 pair	#	<b>103</b>
10	10 pair	#	<b>104</b>

**68108****Nylon glove Gripmaster®****Type**

Black nylon glove with micro-porous latex coating on the hand inner surface. Excellent tactile feel and excellent grip of oily and slippery parts.

**EN 420, EN 388 Level 2122, cat. II.**

**Use**

Tasks with oily and slippery workpieces, assembly and maintenance, precision mechanics, automobile industry.

**68108**

Size	Pack =	68108	...
8	12 pair	#	<b>101</b>
9	12 pair	#	<b>102</b>
10	12 pair	#	<b>103</b>



## Protective gloves

68103

### Nylon glove Camapur® Comfort 626



#### Type

With PU coating of the palm and on the knuckles. Extremely good feel, tight fit, high mechanical

resilience and gripping safety. Breathable thanks to polyamide tricot on the back of the hand. Low susceptibility to dirt.

EN 388 Level 2131, cat. II.

68103



Size	Pack =	68103	...
7	10 pair	#	101
8	10 pair	#	102
9	10 pair	#	103
10	10 pair	#	104

68105

### Knitted gloves Polytril Air

## Honeywell

#### Type

Black polyamide glove with nitrile foam coating on the palm for sure grip and abrasion resistance. Air-permeable back of hand for optimal breathability, good tactile sensitivity. EN 420, EN 388 Level 4121, cat. II.

#### Use

For general precision maintenance work under dirty, fatty, and oily conditions.

68105



Size	Pack =	68105	...
7	10 pair	#	101
8	10 pair	#	102
9	10 pair	#	103
10	10 pair	#	104
11	10 pair	#	105

68109

### Nylon fine-knit glove ActiveGrip™ Advance

#### Type

Nylon fine-knit glove with black micro-finish® nitrile coating on the palm. Anatomical fit, extremely wear-resistant and non-slip, breathable. EN 420, EN 388 Level 3121, cat. II.

#### Use

Assembly and maintenance tasks under dry, wet, or oily conditions, automobile industry, construction industry and mechanical engineering.

68109



Size	Pack =	68109	...
9 (L)	12 pair	#	101
10 (XL)	12 pair	#	102
11 (XXL)	12 pair	#	103

68110

### Nitrile gloves

#### Type

Multi-purpose use. Nitrile gloves do combine the advantages of natural cotton with high safety features of nitrile compositions. High cutting-, stick- and abrasion resistance, fat- and oil repelling, back partially coated

#### Use

For assembly and maintenance work, metalworking, automotive industry and shipbuilding etc.

#### 68110 100

Light version, back of the hand partially coated, tear-resistant, oil and grease repellent, with knitted cuff, tactile feel and pleasant to wear. CE cat. II.

#### 68110 101

Heavy-duty model, with sailor cotton cuff in compliance with CE cat. II. Uncoated back of hand.

#### 68110 103

PROFAS I<sub>uvex</sub> PROFI-CLASSIC protective gloves

Knitted cuff, DIN EN 388, very good dry and wet grip, very comfortable.

68110 100



68110 101



68110 103



Size	Pack =	68110	...
10	12 pair	#	100
10	12 pair	#	101
9	1 pair	#	103

Special Tools / PPE

68112

**Mechanic's glove Tactyl Grip****Type**

Nylon, Lycra® and elastane with breathable and water-repellent membrane. Silicon dots on the palm for sure grip in dry and wet environments. Additional reinforcement between thumb and index finger, robust Velcro fastener, washable.

EN 420, EN 388 Level 3111, cat. II.

**Use**

Automobile industry, trade, assembly, logistics and transport.

Size	Pack =	68112	...
9	1 pair	#	101
10	1 pair	#	102
11	1 pair	#	103



68112

68115

**Heat protective gloves****Type**

Seamless cotton gloves with high comfort and good finger grip. **Heat protection up to 250°C.** Both sides with nitrile-N-profile coating for better grip and wear resistance. cat I.

**Use**

Light to moderate thermal conditions.

Size	Pack =	68115	...
XL (10)	1 pair	#	102



68115

68117

**Cut protection glove Camapur® Cut 620****Type**

Knitted glove with HPPE high-modulus fibre with grey polyurethane coating on the palm. Excellent fit and good tactile feel with excellent cutting-resistance characteristics, washable.

EN 420, EN 388 Level 4342, cat.II.

**Use**

Sheet metal and metal processing with moderate cutting hazards, automobile industry, assembly and maintenance.

Size	Pack =	68117	...
8	1 pair	#	101
9	1 pair	#	102
10	1 pair	#	103



68117

68118

**Dyneema® knitted glove****Type**

Best comfort, long service life, heavy-duty version. The Dyneema® fibre ensures improved protection against cuts and perfect fit. Grey version, cut-resistant, finger and palm with PU coating.

In compliance with EN 388. Cat. II, EN 420.

Size	Pack =	68118	...
8	1 pair	#	101
10	1 pair	#	102



68118

68120

**Cut-Resistant Gloves****Type**

Kevlar medium-knit, PVC dots on both sides. EN 388 and EN 407.

Size	Pack =	68120	...
8	1 pair	#	101
10	1 pair	#	102



68120



# Ear protection

## 68150 Earplugs



**68150 101**  
**Foam earplugs Laserlight**  
**Type**

With smooth outer skin, pointed pre-shaped. Adapts exactly to the contours of the ear channel and allows easy fitting and closing. **SNR-value: 35 dB. Pack = 200 pair, each pair in a bag.**

**68150 201**  
**Banded earplugs QB1**  
**Type**

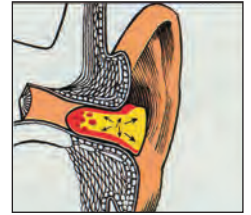
Lightweight and comfortable. The special ergonomic shape ensures the right distance of the earplug, e.g. for placement on a work surface. **SNR-value: 26 dB.**

**68150 202**  
**Spare earplugs**  
 For banded earplugs cat.-no. 68150 201.  
**Pack = 50 pairs.**

**68150 101**



**68150 201**



Pack =	<b>68150</b>	...
200 pairs	#	<b>101</b>
1 pc.	#	<b>201</b>
50 pair	#	<b>202</b>

## 68155 - 68156 Hearing protection dispenser Bilsomat 400



**68155**  
**Type**

**Dispenser type Bilsomat 400:**  
 Wall dispenser for 400 pairs of earplugs Bilsom 303. Your fast and easy to reach hearing protection centre on the wall. Transparent for fill level control.

**Hearing protection, type Bilsom 303:**  
 Efficient disposable earplugs. Made of polyurethane foam, conical shape for perfect fit, smooth and hygienic surface, 2 sizes for perfect fit. L for medium and large auditory canals, S for small auditory canals. Colour: Yellow-white. **SNR-value: SNR = 33, H = 32, M = 29, L = 29.**

**Use**  
 Mounting the dispenser at the entrance of noisy areas makes hearing protection available where it is needed and at the same time the workers are reminded to use it.

**68155 101**  
**Type**  
 With 400 pairs of Bilsom 303, size L.

**68155 102**  
**Type**  
 With 400 pairs of Bilsom 303, size S.

**68156**  
**Refill packs for Bilsomat 400**

**68156 101**  
**Type**  
 With 200 pairs of Bilsom 303, size L.

**68156 102**  
**Type**  
 With 200 pairs of Bilsom 303, size S.

**68155**

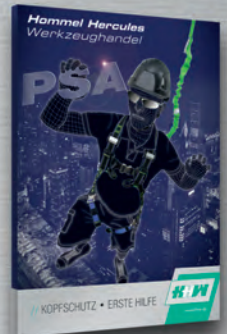


**68156**



Size	Pack = pair	Dispenser		Refill pack	
		<b>68155</b>	...	<b>68156</b>	...
303 L	400	#	<b>101</b>		
303 S	400	#	<b>102</b>		
303 L	200			#	<b>101</b>
303 S	200			#	<b>102</b>

# SAFETY FIRST! The current PSA catalogues



Special Tools / PPE



68160

Earmuff/Hearing Protection Box

68160 101



Earmuff Hearing Protectors

Type

With plastic head band, soft, skin-friendly cushion, suitable for any head size, high wear comfort even when during extended use. **EN 352-1. SNR-value: 29 dB(A).**

68160 104

Hearing protection box

Type

Made of ABS plastic, blue, dust-protected and splash-proof, easy assembly by screwing or glueing on. Incl. Fastening material. Dimensions 23,6 x 22,5 x 12,5 cm.

68160 104

68160 101



	68160	...
Hearing protectors	#	101
Hearing protection box	#	104

68161 - 68162

Earmuff Hearing Protectors

Honeywell

68161

Type Leightning L2F High Visibility

Type

With folding head band for convenient storage. Bright green protectors for extraordinary visibility in bad weather or darkness. Reflecting headset, which is clearly visible when light shines on it, and ensures greater safety. Air flow control technology offers optimal insulation performance in all frequency areas. Weight 236 g. **Testing in compliance with EN 352-1. SNR = 32 dB.**

**SNR = 32 dB.**

Use

Perfect for night-time use, under low-light and bad weather conditions.

68162 101

Ear protector type Leightning L2

Type

Spring steel frame for operating under extremely high load. The soft foam cushion of the frame and the comfortable ear covers (replaceable) ensure best comfort in spite of long usage. Perfect fit for all head sizes thanks to the telescopic adjustment of the frame. **Tested in compliance with EN 352-1. SNR = 31 dB.**

Use

For medium noise and long wear time.

68161



68162



Type	68161	...	68162	...
Leightning L2F	#	101		
Leightning L2			#	101

68163

Earmuff Optime

3M PELTOR™

68163 101

Optime I

Type

Multi-purpose use and very low weight (180 g). This earmuff has a slim design, but is very deep inside. It can easily be combined with other equipment. The perfect choice for people who need multi-purpose ear protection for shorter or longer periods. **Tested in compliance with EN 352-1/352-3. SNR = 27 dB.**

Use

For low-level noise exposure. Workshop, plumbing shops, printing shops, and recreation.

68163 201

Optime II

Type

Optime II was developed for high-level noise exposure and is very effective even against low-frequency noise. The sealing rings are filled with a mixture of liquid and foam and ensure a perfect seal even when used with low contact pressure. High wearing comfort even during longer use. The headsets offer variable height adjustment and are flexible. Wight 210 g.

**Tested in compliance with EN 352-1/352-3. SNR = 31 dB.**

Use

For high-level noise exposure. For use with construction site equipment, compressed-air drill and in agriculture.

68163 301

Optime III

Type

The Optime III is the perfect choice for extreme noise exposure. Double protectors for a reduction of resonance inside. This ensures maximum high-frequency damping. Signs and language are still easily discernible. The acoustic coupling of inner space and the space between the protectors ensures a perfect damping of low frequencies. Wide, soft frame. Weight 285 g.

**Tested in compliance with EN 352-1/352-3. SNR = 35 dB.**

Use

For extreme noise exposure. Airports, mines, and machine rooms.

68163 101



68163 201



68163 301



Type	68163	...
Optime I	#	101
Optime II	#	201
Optime III	#	301

Special Tools / PPE



68200

Respiratory masks



68200 201

Type

Reinforced outer shell, soft inner shell, formable nose frame. **Protection class FFP1 D, EN 149:2001.**

Use

Protection against solid, non-toxic particles.

68200 202

Type

Solid housing, adjustable nose frame, breath-out valve, low resistance, great comfort, foam inner gasket, tacked head band. **Protection class FFP2 D, EN 149:2001.**

Use

Protects against solid, harmful particles of low-toxic substances.

68200 201



Protection class	Pack = pcs.	68200	...
FFP1 D	20	#	201
FFP2 D	10	#	202

68202

Respiratory masks

Honeywell

68202 101

Type

**FFP1 in compliance with EN 149:2001.**

Respiratory mask with soft, skin-friendly sealing lip for optimal seal in the nose area. Elastic straps with high tensile strength ensure perfect fit. The mask is free of PVC, silicone and latex. Colour code of the nose-piece: yellow.

Use

Protection against solid and liquid aerosols (dusts, sprays) up to 4x their limit value.

68202 102

Type

**FFP2 in compliance with EN 149:2001.**

Respiratory mask with soft, skin-friendly sealing lip for optimal seal in the nose area. Elastic straps with high tensile strength ensure perfect fit. The mask is free of PVC, silicone and latex. Colour code of the nose-piece: green.

Use

Protection against solid and liquid aerosols (dusts, sprays) up to 10x their limit value.

68202 103

Type

Like cat.-no 68202 102, however with exhalation valve for even more comfort.

Use

Protection against solid and liquid aerosols (dusts, sprays) up to 10x their limit value.

68202 104

Type

**FFP3 D in compliance with EN 149:2001.**

Folding mask in hygienically clean individual packaging with supple soft sealing lip in the nose area and an exhalation valve. The mask offers minimal breathing resistance even if the filter material is highly loaded. The mask is free of PVC, silicone and latex. Colour code of the nose-piece: red.

Use

Protection against solid and liquid aerosols (dusts, sprays) up to 30x their limit value.

68202 101



68202 102



68202 103



68202 104



Protection class	Pack = pcs.	68202	...
FFP1	20	#	101
FFP2	20	#	102
FFP2	20	#	103
FFP3 D	10	#	104

68203

Respiratory masks

3M

Type

Mask body pre-shaped, nose section can be fitted individually.

68203 201

**Respiratory mask FFP2**

Use

Protection against fine dusts up to 10x the limit value.

68203 202-203

Type

Breathing masks with patented **Cool Flow breath-out valve** for best comfort. No fogging.

68203 202

**Respiratory mask FFP2 with Cool-Flow exhalation valve.**

Use

Protection against fine dusts up to 10x the limit value.

68203 203

**Respiratory mask FFP2 D with Cool-Flow exhalation valve, adjustable strap and sealing lip.**

Use

Protection against fine dusts up to 10x the limit value.

68203 201



68203 202



68203 203



Protection class	Pack = pcs.	68203	...
FFP2	20	#	201
FFP2	10	#	202
FFP2 D	5	#	203



Special Tools / PPE

68206

## Respiratory masks, series Aura™ 9300

**3M****Type**

Three-piece design, with extra soft fleece on the inside for best comfort, trouble-free speaking and high acceptance. **New filter technology** for hardly noticeable breathing resistance. Sealed seat through the **new design of the nose region** and the **innovative chin strap**. Integrated nose clip with sweat-absorbing cushioning. Hygienic individual packaging and **Cool-Flow exhalation valve** are the characteristics of these masks.

**68206 101****Type 9312**

Protection class **FFP1 in compliance with EN 149: 2001**, 4-x limit value for particles. Strap colour: yellow.

**68206 201****Type 9322**

Protection class **FFP2 in compliance with EN 149: 2001**, 10x limit value for particles. Strap colour: Blue.

**68206 301****Type 9332**

Protection class **FFP3 in compliance with EN 149: 2001**, 30-x limit value for particles. Strap colour: red.

68206



Protection class	Pack = pcs.	68206	...
FFP1	10	#	101
FFP2	10	#	201
FFP3	10	#	301

68215

## Respiratory mask 4279 (maintenance-free)

**3M****Type**

Maintenance-free mask for maximum security and easy use. Two large active charcoal filter elements ensure minimal breathing resistance, large field of vision thanks to low-profile design, parabolic exhalation valve reduces heat accumulation. Soft, skin-friendly material. Light and well-balanced design, elastic bands with head band, easy-to-fasten bands for the nape of the neck. **Protection class FFABEK1P3D in compliance with EN 405:2002.**

**Use**

Organic vapours, inorganic and acidic gases and ammonia up to 10-x the MAK-value or 1000 ml/m<sup>3</sup>, whichever happens first. Fine dusts up to 30-x the limit value.

When working with ammonia, methyl-amine, chlorine, bleaching agents, hydrochloric acid, sulphur dioxide, hydrogen sulphide, solvents.

68215



68215	...
#	101

68240

## Safety goggles MAX T7

**MAX**  
SAFETY**Type**

Lightweight double-lens safety goggles with flexible, non-slip earpieces for good comfort. Soft nose pads for perfect seat. The nose pads can be removed for cleaning. 100 % UV-shield, scratch-proof and anti-fog. **EN 166-168.**

**Use**

For inside and outside projects.

68240 201



68240 202



Lens	Frame	68240	...
transparent	crystal-black	#	201
grey tinted	crystal-black	#	202

**LARGE SELECTION – SIMPLE SEARCH**

Always remember! CATALOGUE VOLUME [1]

The specialist catalogue for machining and clamping technology.

Experience our extensive product range of quality tools from **ATORN**.

**ATORN**® Performance requires quality



## Safety goggles

68242

### Safety goggles MAX W3



#### Type

Indoor/outdoor safety goggles with mirrored polycarbonate lens for usage under changing light conditions. The soft nose bridge and the earpieces that can be adjusted in length ensure a secure hold. The large lens also protects the eyebrow area and ensures good all-round vision. Lens with 100 % UV-shield, scratch-proof and anti-fog. **EN 166-168.**

#### Use

For working under changing light conditions inside and outside.



68242

Lens	Frame	68242	...
silver mirrored	black-orange	#	101

68246 - 68248

### Safety goggles MAX C4 / MAX Z8



68246

#### Type MAX C4

#### Type

Made of polycarbonate. Very lightweight. Perfect fit and large covered area. Lens with 100 % UV-shield, scratch-proof and anti-fog. **EN 166-168.**

#### Use

For visitors as well as in the workshop, in the field, in laboratories.

68248

#### Type MAX Z8

#### Type

Earpiece made of robust metal. Soft, PVC-coated earpiece ends for comfort. Large lens also protects the eyebrow area and ensures good all-round vision. Lens with 100 % UV-shield, scratch-proof and anti-fog. **EN 166-168.**

#### Use

Workshop, in the field, extreme conditions.



68246 101



68246 102



68246 105

Lens	Frame	MAX C4		MAX Z8	
		68246	...	68248	...
clear	clear	#	101		
clear	metallic-silver			#	101
grey	grey	#	102		
blue	blue	#	105		



68248

68249

### Safety goggles MAX A1



#### Type

The classic among safety goggles with earpieces made of elastic nylon. Two components make up the flexible earpiece ends with very soft naps, which improve the fit of the goggles. Earpiece length and inclination are individually adjustable for precise fit. Side protection for increased safety. Lens with 100 % UV-shield, scratch-proof and anti-fog. **EN 166-168.**

#### Use

Workshops and laboratories. Protects when drilling, milling and grinding.



68249 101



68249 102

Lens	Frame	68249	...
clear	blue-red	#	101
grey tinted	blue-red	#	102

68243

### Safety goggles MAX XR



#### Type

Non-slip soft pads on the earpiece ends. The earpiece ends are inclinable. Unimpeded all-round vision. Lens with 100 % UV-shield, scratch-proof and anti-fog. **EN 166-168.**

#### Use

For use in workshops, in the field, and in laboratories.



68243

Lens	Frame	68243	...
clear	black-orange	#	101

68244

## Safety glasses MAX SL



## Type

Sporty double-lens safety goggles with laterally adjustable earpieces made of nylon and soft nose pad for comfort and perfect fit. Lens with 100 % UV-shield, scratch-proof and anti-fog. EN 166-168.

## Use

For use in workshops, in the field, and in laboratories.

68244



Lens	Frame	68244	...
clear	grey	#	101

68245

## Safety glasses MAX K9



## Type

Anti-fog lens made of polycarbonate. Frame made of nylon, adjustable in length and with inclination adjustment at the joint. Nose pad made of soft PVC. Lens with 100 % UV-shield, scratch-proof and anti-fog. EN 166-168.

## Use

For outdoor use.

68245



Lens	Frame	68245	...
clear	grey	#	101

68250

## Safety glasses MAX V1 / MAX V2



68250 201

## Type MAX V1

## Type

With side protection, made of sturdy polycarbonate, extremely shock and scratch-proof, can be worn on top of regular glasses. EN 166-168.

## Use

Protects during sawing, planing, boring, milling, grinding, polishing and at laboratory work.

68250 301

## Type MAX V2

## Type

User glasses, for which the earpieces and the lens are manufactured of clear polycarbonate. Ideally suited for wearing over corrective glasses. EN 166.

68250 101



68250 301



Type	Lens	Frame	68250	...
MAX V1	clear	transparent	#	201
MAX V2	clear	clear	#	301

68257

## Safety glasses Terminator Plus/Small



68257 101

## Type Terminator Plus

## Type

Ultra-modern safety goggles in sporty design. An additional rubber lip on the upper edge of the frame prevents penetration of foreign objects. The earpiece lengths and inclination adjustment offer the possibility of individual adaptation and thus a perfect seat. Soft earpieces ensure pressure-free wear. Lens polycarbonate, clear 100% UV protection, scratch-proof.

Tested in compliance with EN 166-168, EN 170.

## Use

Grinding, turning, milling, precision mechanics, application in the field and laboratories.

68257 201

## Type Terminator Small

## Type

Especially for **smaller head shapes**, seals tight all around. Soft earpiece, inclination and earpiece length adjustment offer the highest level of wearer acceptance and perfect seat. Lens polycarbonate, clear 100% UV protection, scratch-proof.

Tested in compliance with EN 166-168, EN 170.

## Use

Precision mechanical tasks, assembly and laboratory tasks, visitor glasses.

68257 101



68257 201



Type	Lens	Frame	68257	...
Terminator Plus	clear	black-mint	#	101
Terminator Small	clear	white	#	201



## Safety goggles

### 68252 - 68253 Safety goggles Millennia/XC FogBan

#### Honeywell

68252

Type Millennia

Type

Safety goggles with excellent wear comfort, perfect fit and very lightweight. Distortion-free. Adjustable, flexible lanyard. Lens 100% UV protection, scratch-resistant.

Tested in compliance with EN 166-168, EN 170.

Use

For operation with extreme postures of the head, in workshops and in the field.

68253

Type XC FogBan

Type

Wide lens for large coverage and distortion-free vision. Adjustable earpieces (length and inclination) for perfect customisation. Soft materials covering all parts touching the face for perfect fit. Lens with 100 % UV-shield, scratch-proof and anti-fog.

Tested in compliance with EN 166-168, EN 170.

Use

Grinding, milling and turning tasks, protection against all conventional hazards in workshops.



68252



68253

Lens	Frame	Millennia		XC FogBan	
		68252	...	68253	...
clear	blue	#	101	#	101

### 68255 Safety goggles skylite NT

#### uvex

Type

Fashionable shape with blue earpieces, earpieces can be adjusted, Ultradura coating.

Lens 100% UV protection, scratch-resistant. The glasses offer secure fit and large viewing area.

Tested in compliance with EN, 166-168, EN 170.

Lens	Frame	68255	...
clear	blue	#	101



68255

### 68262 Safety goggles cybric

#### uvex

Type

Dynamic, sporty safety goggles, modern design. The Quattroflex-earpiece with its 4 cushions ensures perfect fit in the ear region. Frame black/orange, lenses UV protection, scratch-resistant, optidur 3000 UV.

Tested in compliance with EN 166-168, EN 170.

Use

Grinding, turning, milling, application in the field and laboratories.

Lens	Frame	68262	...
clear	black-orange	#	101



68262

### 68277 Safety goggles astrospec 9168

#### uvex

Type

Super lightweight safety goggles with full vision, only 36 g. Frame of high impact resistant plastic, lens of high impact resistant polycarbonate, high level UV protection.

Maximum wear comfort, earpiece length adjustable, lens integrated side protection. Lens with 100 % UV-shield, scratch-proof and anti-fog.

Tested in compliance with EN 166-168, EN 170.

Lens	Frame	68277	...
clear	yellow-black	#	102
Spare lens	-	#	103



68277

### 68280 Safety goggles pheos 9192

#### uvex

Type

Safety goggles with modern fashion look. Perfect all-round protection, large field of vision through duo-pane lens. Outstanding ventilation through integrated UVEX climazone earpiece concept,

non-slip through hard/soft technology with non-slip components on the earpiece ends. Lens with 100 % UV-shield, scratch-proof and anti-fog. Tested in accordance with EN 166, EN 170.

Lens	Frame	68280	...
clear	light-grey	#	101



68280

68281

**Safety goggles futura 9180****uvex®****Type**

Lightweight safety goggles with almost unrestricted vision range. Maximum wear comfort and sealed seat thanks to outstanding fit.

Variable adjustment earpiece inclination, earpiece length individually adjustable. **EN 166-168, EN 170.**

68281



Lens	Frame	68281	...
clear	brown-transparent	#	101
Spare lenses, in pairs	-	#	102

68283

**Safety goggles i-vo****uvex®****Type**

Soft components in sensitive areas and comfortably cushioned earpieces for comfortable permanent fit. Lens 100% UV protection, scratch-proof and anti-fog, HC-AF.

Tested in compliance with **EN 166-168, EN 170.**

**Use**

Grinding, turning, milling, application in the field and laboratories.

68283



Lens	Frame	68283	...
clear	blue-orange	#	101
Spare lens	-	#	201

68284

**Safety goggles skyper 9195****uvex®****Type**

Super lightweight safety goggles with unrestricted side view, lens and earpiece made of high-impact strength plastics, high-flexible comfort earpiece allows non-pressure fit.

Earpiece length individually adjustable with built-in safety pull stop. Earpiece inclination for optimum fit of glasses. Matt side protection for dazzle-free working. 100% UV-protection. **EN 166-168, EN 170.**

68284



Lens	Frame	68284	...
clear	black	#	101
Spare lens	-	#	102

68271

**Wrap-Around Goggle for Wearers of Glasses****uvex®****Type 9161****Type**

Fits on top of all glasses. Unrestricted side view thanks to super-panorama lens with 180° vision range. Outstanding pressure-free seat, effective indirect ventilation through special earpiece

construction with optimum lateral protection. Earpiece ends length-adjustable in 4 increments, maximum wear comfort. **Tested in compliance with EN 166-168, EN 170.**

**Use**

Protects during sawing, planing, boring, milling, grinding, polishing and at laboratory work.

68271



Lens	Frame	68271	...
clear	blue-black	#	101

68268

**Full vision safety goggles MAX V20****MAX SAFETY****Type**

Chemicals safety goggles with indirect aeration by means of 4 button-shaped valves. Anti-fog lens made of polycarbonate. **Tested in compliance with EN 166.**

**Use**

For working with chemicals and in laboratories.

68268



Lens	Frame	68268	...
clear	clear	#	101



68264

**Panorama full-view safety goggles ultravision 9301**

**uvex®**

**Type**

Unrestricted side view thanks to super-panorama lens with 180° field of vision, absolutely sealed and pressure-free seat. Optimum fit and higher wear comfort thanks to soft face and special nose piece. Ventilation system, anti-fog-lens.

Ideal for people wearing glasses.  
**Tested in compliance with EN 166-168, EN 170.**

68264

**68264 102**  
**Spare lens, clear.**  
 Polycarbonate, high mechanical strength.



Lens	Frame	68264	...
clear	grey-transparent	#	101
Spare lens	-	#	102

68265

**Full-view safety goggles ultrasonic 9302**

**uvex®**

**Type**

Extraordinary wear comfort: Thanks to the combination of two different materials (hard component/soft component) even permanent wear does not cause pressure marks. The flexible soft component adjusts itself to the face and protects the lateral area around the eyes, even for people wearing glasses.

A comfortable and irritation-free climate and feeling around the eyes is guaranteed by the extraordinary ventilation. Wide panoramic field of vision and quick and easy exchange of the lenses thanks to the novel clip system.

**Tested in compliance with EN 166-168, EN 170.**

68265 101



68265 102



Lens	Frame	68265	...
clear	orange-grey	#	101
clear	grey-black	#	102
Spare lens	-	#	103

68289

**Glasses cleaning wipes**

**uvex®**

**Type**

Wet wipes, silicone-free, individually packed.  
**In cardboard box, 100 pcs.**

**Use**  
 Suitable for all lenses.

68289



		68289	...
			101

68290

**Safety Goggles Boxes**

**ATORN®**

**Type**

Made of ABS plastics, blue, dust-protected and splash-proof. The box is equipped with two mounting holes and should be mounted in places where eyes are endangered by sparks, chips, flashes etc. Incl. Fastening material.

**Use**  
 Perfect for space-saving and clean storage of safety goggles. Easy-to-reach near the workstation, at entrances, laboratories, e.g. for visitors.

68290 201



68290 202

68290 203



Dimensions cm	for protective goggles pcs.	68290	...
23,6 x 12,0 x 12,0	1	#	201
23,6 x 22,5 x 12,5	4	#	202
23,6 x 31,5 x 20,0	12	#	203



68300

## Industrial Safety Helmets



## Type

Tested in compliance with EN 397. Helmet shell made of PE, resistant against solvents, light acids and alkaline solutions, rain groove, good ventilation,

6-point textile headband, very low weight - **only 340 g**, sidewise relief shape allows the use of ear protectors.  
**Also approved as hard hat.**

68300



Colour	68300	...
white	#	201
blue	#	202
yellow	#	203

68330

## Bump Caps First Base 3 Classic and Elite



## Type

- The newly developed, flexible inner shell with micro-perforated sides and indirect ventilation in the crown area guarantees maximum air circulation
- The moulded shell design optimally adapts to different head sizes and shapes, sits securely and comfortably
- The machine-washable microfibre material with lateral generously dimensioned ventilation nets and the absorbent sweat band significantly reduce moisture and heat in the interior of the bump cap
- Over the ear and also improve the individual seat and the compatibility with other PSA
- **Tested in accordance with EN 812 A1**

68330 201-204

## First Base 3 Classic

## Type

- The third generation of the SCOTT bump cap

68330 201-204



68330 301-302

## First Base 3 Elite

## Type

- The new First Base 3 Elite in bi-colour-design for a modern look
- With an additional ventilation net in the crown area
- Reflective circumferential edging ensures visibility at night and for inadequate lighting conditions

68330 301-302



Colour	Type	68330	...
black	Classic	#	201
marine blue	Classic	#	202
royal blue	Classic	#	203
grey	Classic	#	204
black/grey	Elite	#	301
marine blue/grey	Elite	#	302

68134

## Back belt MAX



## Type

Sources of danger for back injuries are e. g. monotonous production line work, frequent standing, and lifting of heavy loads. In conjunction with the right lifting technique, the belt minimises the risk of back injuries. The conical shape, which adapts to

the body shape, is comfortable in wearing. Additional wearing comfort comes from the special hip and rib contours. Furthermore, the waisted shape ensures a good fit. The **one-way hook-and-loop system** and the slid'n grip lock not only guarantee more safety, but also **very easy handling**.

68134



Size	Length cm	68134	...
S	69-81	#	101
M	79-91	#	102
L	89-104	#	103
XL	101-114	#	104
XXL	112-124	#	105



**Information for the use of PSE for the protection against fall and for restraint and rescue.**

All rules and regulations of the employers' liability insurance companies in compliance with BGR 198 and BGR 199 in effect as well as all accident prevention regulations in effect must be followed.

Fall arrest devices must be in place (excerpt):

- in workplaces or traffic routes, at and above water or other materials, in which it is possible to drown in, this is independent of the fall height
- at a fall height of more than 1,0 m near stairs and staircases without railings, wall openings, operating platforms of machines; furthermore at openings (skylights, air vents ...), which are not covered with a supporting, held-in-place cover
- For a fall height of more than 2.0 m on all 2 workstations and traffic routes.

Deviant rules and regulations:

- For workstations and traffic paths on roofs, starting from a fall height of 3.0 m
- For walls and tasks on windows from a fall height of 5.0 m.

**The fall arrest system**

The fall arrest system is comprised of various individual components that can be combined depending on the area of implementation and requirement.

**The attachment point**

- In accordance with EN 795
- For example, tripod, crossbars, webbing loop, Minifix, permanent systems.

**Lanyards**

- In accordance with EN 353-2, EN 354/355, EN 360 oder EN 358
- e.g. fall-arrest device, Shockyard, energy absorbing element, Retractable type fall arrester.

**The sling**

- In accordance with EN 364, EN 358 or EN 813
- For example, fall arrest and rescue harness, work position harness, sitting harness.



**The standards**

Personal fall projection equipment items are subject to different standards depending on area of implementation and purpose:



**EN 358 Work position harness**

For holding in the work position and for restraint in areas where there is danger of falling, (e.g. for tasks on flat roofs). As a rule, the holding eyelets are on the side in the area of the pelvic bone.



**EN 361.**

For use in climbing protection in conjunction with fall-arrest harnesses on a fixed guide. Climbing protection (e.g. on towers, masts). As a rule, the climbing protection eyelets are located on the waist strap, centred in front of the body.



**EN 361 Fall-arrest harness**

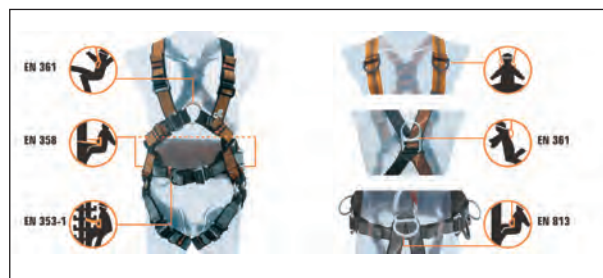
For securing in areas where there is danger of falling, for arresting falls (e.g. for tasks on towers, masts, projects on buildings). The fall arrest eyelets are in the back between the shoulder blades (dorsal) or in the chest area (sternal).



**Rescue eyelet**

**Additional components/selection:**

- EN 341** Descender devices
- EN 353-1** Guided type fall arresters including a rigid anchor line
- EN 353-2** Guided type fall arresters including a flexible anchor line
- EN 354** Lanyards
- EN 355** Energy absorbers
- EN 360** Retractable type fall arresters
- EN 363** Fall arrest system
- EN 795** Attachment point



**Application:**

- |  |   |  |                      |
|--|---|--|----------------------|
|  | Industrial use                          |  | Structural steelwork |
|  | Catenary/transmission line construction |  | Construction         |
|  | Wind turbines                           |  | Fire brigade         |
|  | Telecommunication                       |  | Event                |
|  | Maintenance                             |  |                      |



68340

Fall arrest systems



Set consists of:

Full body harness EN 361, type CS 2 with front and back fall arrest eyelet. Band sling EN 354 and EN 795, type LOOP 22kN, length 2 m. Active fall arrester in compliance with EN 353-2, type SKN, length 10 m. Kern mantle rope with carabiner FS 51, in carrying case.

Note:

Technical specifications of full body harnesses and fall arrest systems see cat.-no. 68350 cont.

68340	...
#	301



68340

68350

Full Body Harnesses



68350 401-402

ARG 30

Type

High-performance fall arrest harness for industry and trade. Individually adjustable slotted buckles in the shoulder and leg area ensure that the harness can be put on taken off more quickly. The central steel chest eyelet is **approved as a full body harness** in accordance with EN 361.

68350 401



68350 402

ARG 30 HRS

Type

Lateral holding eyelets in accordance with EN 358, climbing protection eyelet in accordance with EN 361 in conjunction with EN 352-1, back supports.

68350 402



68350 403

ARG 31 Skyfizz Lifter Click

Type

The individually adjustable harness is ideal for tasks without positioning ropes or other aids. Extremely stressable front and rear steel fall arrest eyelet in accordance with EN 361. The comfortable back pad uniformly distributes the load. Click locks simplify handling and putting on the equipment.

68350 403



Type	Weight approx. kg	68350	...
ARG 30	1,1	#	401
ARG 30 HRS	1,6	#	402
ARG 31	1,6	#	403

68357

Lanyards

68357 101-102

BFD SK 12

Type

Lanyard with kernmantel rope, can withstand extreme edge loads and with long service life EN 354, EN 355.

68357 103

BFD Y SK 12

Type

Lanyard with kernmantel rope, can withstand extreme edge loads and with long service life Alternating anchor points with two carabiners possible. EN 354, EN 355.

68357 104-105

Shockyard Flex

Type

The shock-absorber is distributed over the entire length; this limits the fall energy in case of a fall to significantly under 6 kN. The elastic tube prevents slack formation and reduces the danger of stumbling. Integrated rescue loops enables a rescue device to be directly hooked in. The simplifies and accelerates a possible rescue. EN 354, EN 355.

Type	Length m	68357	...
BFD SK 12	1,5	#	101
BFD SK 12	2,0	#	102
BFD Y SK 12	1,5	#	103
Shockyard Flex	1,5	#	104
Shockyard Flex	1,8	#	105



68357 101-102

68357 103

68357 104-105

68351 - 68353 Guided type fall arresters EN 353-2



68351 Pole restraint rope

**Type**  
Ergogrip SK 12 in accordance with EN 358, carabiner Ovaloy Tri and FS 51. Rope diameter 12 mm. For use in the lateral holding eyelets in accordance with EN 358.  
The Ergogrip runner is extremely small, light and ergonomic. It is infinitely adjustable on the rope.

68353 Ergogrip SK 16  
**Type**  
The Ergogrip is a length-adjustable fall arrest device and is used for safe and flexible work positioning. It can be used as a guided fall arrester or restraint rope. The special edge-loading 16 mm core-mantel rope also withstands heavy loads. EN 353-2, EN 358.



**Note:**  
The restraining ropes only serve as workplace positioning devices.

68352  
**Type**  
Active fall arrester made of steel, including a flexible anchor line. Incl. automatic carabiner hook type FS 51. The energy is absorbed by sliding on a kernmantel rope Ø 11 mm. As soon as the fall arrest device brakes, it stops the secured rope access technician in an extremely short response time, without unpleasant ripping open noises. This significantly reduces the first shock of falling. The worker feels safe. The impact is reduced.



Fall arrest device Rope length m	Adjustable		with guide		Adjustable	
	68351	...	68352	...	68353	...
2	#	101				
5			#	301	#	301
10			#	302	#	302
15			#	303	#	303
20			#	304		

68355 Loops



**Type**  
Can withstand extreme edge loads, strength 35 kN. EN 354, EN 795.

Length m	68355	...
1	#	101
2	#	102

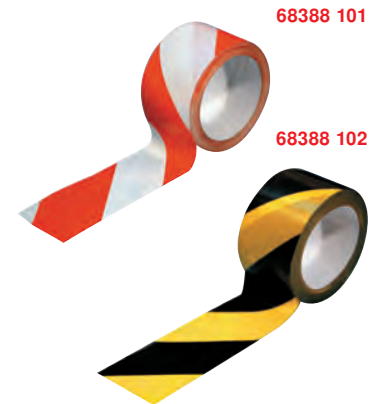


68388 Barrier tape, self-adhesive

**Type**  
Waterproof, high wear-resistance, very strong adhesion, can be applied manually or by means of machines, can be walked on immediately.

**Use**  
For marking width, height, moving gear, obstacles, flammable substances, etc.

Colour	Width mm	Length m	68388	...
red/white	60	66		101
black/yellow	60	66		102



68390 Warning Tape

**Type**  
Polyethylene foil, tear-resistant, lightfast, red-white, in stable dispenser box.

Colour	Width mm	Length m	68390	...
red/white	80	500		101



Special Tools / PPE

## Info

### Excerpt from the accident prevention regulations:

The new German work place regulation ASR A4.3 "First aid rooms, equipment and fittings for first aid" provides uniform, legally binding guidelines for all workplaces in heavy industry, workshops, small companies, public sector and education facilities:

**– in administration and trading companies**

up to 50 employees 1 x DIN 13157 small,  
> 50 employees 1 x DIN 13169 large,  
> 300 employees 1 x DIN 13169 per 300 employees.

**– in production and processing facilities:**

up to 20 employees 1 x DIN 13157 small,  
> 20 employees 1 x DIN 13169 large,  
> 100 employees 1 x DIN 13169 per 100 employees.

**– for construction sites:**

up to 10 employees 1 x DIN 13157 small,  
> 10 employees 1 x DIN 13169 large,  
> 50 employees 1 x DIN 13169 per 50 employees.

1 first aid box, large, DIN 13169 can be replaced with  
2 first aid boxes, small, DIN 13157

68400

### Large first aid boxes in compliance with DIN 13169

**SÖHNGEN®**

68400 201

**First aid kit MT-CD**

**Type**

ABS plastic, orange, wall holder with 90° stop arrest, stable handle and turning locks, two equally-sized case halves, perimeter rubber seal, transparent covering plates, adjustable interior division, sealing device, security seal.

**Inclusive of contents DIN 13169.**

68400 202

**Wall-mounted first aid box Rom**

**Type**

Sheet steel, white, two doors, lockable, two adjustable shelves, two drawers, doors with three trays each, folding placement tray.

**Inclusive of contents DIN 13169.**

68400 203

**First aid box Oslo**

**Type**

Sheet steel box, white, frame and lid drawn each drawn from a single piece, rounded edges, profile seal, two movable handles, two locking clamps

**Inclusive of contents DIN 13169.**

68400 211

**Refill**

**Type**

Contents in compliance with DIN 13169 for filling and refilling of existing first aid kits.



68400 201



68400 203



68400 202



68400 211



Type	Size mm	DIN 13169	
		68400	...
First aid kit	400 x 300 x 150	#	201
Wall-mounted first aid box	404 x 462 x 170	#	202
First aid box	350 x 250 x 100	#	203
Refill	-	#	211

68401

### Small first aid kit in accordance with DIN 13157.

**SÖHNGEN®**

68401 201

**First aid kit Quick-CD**

**Type**

ABS plastic, orange, wall holder with 90° stop arrest, stable handle and turning locks, two equally-sized case halves, perimeter rubber seal, transparent covering plates, Adjustable interior division, sealing device, security seal.

**Inclusive of contents DIN 13157.**

68401 202

**Wall-mounted first aid box Heidelberg**

**Type**

Sheet steel, white lacquered, one door, lockable, one adjustable shelf, door with seal.

**Inclusive of contents DIN 13157.**

68401 203

**First aid box Kiel**

**Type**

Made of high impact resistant plastic, white, with hinge and locking clamps.

**Inclusive of contents DIN 13157.**

68401 211

**Refill**

**Type**

Contents in compliance with DIN 13157 for filling and refilling of existing first aid kits.



68401 201



68401 203



68401 202



68401 211



Type	Size mm	DIN 13157	
		68401	...
First aid kit	260 x 170 x 110	#	201
Wall-mounted first aid box	302 x 362 x 140	#	202
First aid box	260 x 160 x 80	#	203
Refill	-	#	211



# First Aid Equipment | Disposable overalls

## 68402 Vehicle first aid box DIN 13164

**SÖHNGEN®**

**Type**

Of high impact resistant plastic with hinge and locking clamps. Black inclusive of contents DIN 13164.

		DIN 13164	
Size mm		68402	...
260 x 160 x 80		#	101



68402



## 68403 First aid kit SPEZIAL

**SÖHNGEN®**

**Type**

With basic equipment DIN 13157 plus extensions. Orange. Size 400 x 300 x 150 mm. Supplemental contents, including increased proportion of bandages, universal dressings, oculavNIT® emergency eye rinsing solution, hand and wound cleaning cloths, sliver tweezers, pressure bandage packs, aluderm®-aluplast dressings.

**Use**

Repair and maintenance shops, technical workshops.

**Note:**

First aid kits for other professions available on request.

		DIN 13157 plus extensions	
First aid kit for professions		68403	...
Workshop		#	102



68403



## 68406 QuickFix bandage dispenser

**Type**

The lockable QuickFix dispenser is only 23 cm wide and 13.5 cm high, and in spite of the small size it can be filled with 90 bandages. The bandages are immediately available and **unpack themselves when pulled out**. Consequently the system can be operated with one hand without contaminating other bandages. QuickFix - fast, easy, and hygienic aid for minor injuries.

**68406 101 Bandage Dispenser Water Resistant**

**Type**

Watertight, especially suited for wet work environments. **Filled with 2 x 45 bandages.**

**68406 102 Refill Set Water Resistant**

**Type**

6 packs, 45 bandages each.

**68406 201**

**Bandage dispenser Elastic**

**Type**

Particularly breathable and elastic textile fabric bandages that adapt to the movement of the skin. **Filled with 2 x 45 bandages.**

**68406 202**

**Refill Set Elastic**

**Type**

6 packs, 45 bandages each.

**68406 301**

**Bandage dispenser Detectable**

**Type**

Elastic, easy to see blue bandages with integrated metal area for detection via metal detectors. Suitable for the food industry. **Filled with 2 x 45 bandages.**

**68406 302**

**Refill set Detectable**

**Type**

6 packs, 45 bandages each.

Type	Bandage dispenser		Refill set	
	68406	...	68406	...
Water Resistant	#	101	#	102
Elastic	#	201	#	202
Detectable	#	301	#	302



68406 101



68406 102

## 68407 aluderm®-aluplast plaster dispenser

**SÖHNGEN®**

**Type**

Practical dispenser of ABS plastic with wall holder and fastening set, orange. Three compartment divisions, transparent hinged lid with tunnel compartment

**Contents:**

- 30 aluderm®-aluplast strips 7,2 x 1,9 cm,
- 30 aluderm®-aluplast strips 7,2 x 2,5 cm,
- 25 aluderm®-aluplast finger tip bandages,
- 20 aluderm®-aluplast finger bandages 12 x 2 cm,
- 10 aluderm®-aluplast knuckle dressings,
- 1 emergency treatment verification pad with 40 sheets.

All adhesive plasters are wrapped individually and hygienically.

**Note:**

aluderm® adhesive plasters do not stick to the wound, do not lose fibres, are breathable, strongly absorbent, they promote skin formation and the healing process, they are hypo-allergenic, physiologically safe, without optical brighteners and are free of chemical binding agents.

Dispenser H x W x D mm		68407	
160 x 122 x 57		#	101



68407



Special Tools / PPE

**SCHNIGEN®**

68408 101

**Set of additional adhesive plasters****Type**

**Altogether, 116** aluderm® aluplast plasters with aluminiumised wound pad, plasters individually wrapped, including finger bandages, finger tip and joint bandages, adhesive strips, coloured children's plasters, Silk adhesive plaster strips. In plastic case 161 x 118 x 50 mm, with hinged transparent lid, blue.

**Use**

Addition to wall-mounted first aid kit or as first aid kit for the office or the workplace.

68408 102-103

**oculavNIT® emergency eye-rinsing solution**

Ready-to-use, sterile solution for emergency rinsing of eyes and conjunctive, especially after contact with acids, alkaline solutions, pepper spray and tear gas. Contents 250 ml per bottle, maintenance-free, service life 3 years. Safety lock.

68408 102

**oculavNIT® box****Type**

**Contents:** 4 oculavNIT® emergency eye-rinsing bottles, immediate set for eye injuries.

In plastic box, size 260 x 160 x 80 mm, with practical wall holder, orange.

68408 103

Single bottle with 250 ml sterile solution.



68408 101



68408 102

68408 103



Type	Contents pcs.	Contents ml	68408	...
Extraset plasters	116	-		101
Emergency eye-rinsing solution, box	-	4 x 250	#	102
Emergency eye-rinsing solution, single	-	250	#	103

## 68500 - 68503

## Disposable Overalls (Protective Clothing)



68500

**Secutex Pro 5/6****Type**

Dust-tight and limited spray-tight, anti-static chemical protection overall. Hood with elastic band, zipper cover as well as back, arm, and leg elastic elements. The overall protects against splashes of aggressive chemical liquids. The combined polypropylene carrier spun fleece and polyethylene laminate combine optimal protection with abrasion resistance.

**Protection class: Cat. III, Type 5, 6.**

**Virus protection tested in accordance with EN 14126.**

**Use**

Areas of implementation include Production and filling in the food, pharmaceutical, and cosmetics industry, production in the chemicals industry, veterinary protection.

68501

**Tritex Pro blue****Type**

Dust-tight and limited spray-tight. Anti-static equipped. Breathable through 3-ply SMS material. Even for longer periods of wear, the robust overall prevents heat and moisture accumulation. Hood with elastic band, double-running zipper, zipper cover strip, as well as waist, arm, and leg elastic elements.

**Protection class: Cat. III, Type 5, 6.**

**Use**

Disposal of asbestos, processing of material that contains glass fibre, for maintenance and rehabilitation tasks.

68502

**Painttex-Plus**

Protects against hazardous fine dusts. This durable overall is anti-static, abrasion-resistant, and non-linting. Breathable through 3-ply SMS material. Hood with elastic band, double-running zipper, zipper cover strip, waist, arm, and leg elastic elements.

**Protection class: Cat. III, Type 5.**

**Use**

Industrial and vehicle painters, renovation work, waste and asbestos removal, etc.

68503

**Tritex Pro white****Type**

Dust-tight overall of 3-ply SMS material, breathable, anti-static. Light grammage. Hood with elastic band, double-running zipper, zipper cover strip, waist, arm, and leg elastic elements.

**Protection class: Cat. III, Type 5, 6.**

**Use**

Disposal of asbestos, processing of material that contains glass fibre, for maintenance and rehabilitation tasks, in the food industry.



68500



68501



68502



68503

Size	68500	...	68501	...	68502	...	68503	...
XL	#	101	#	101	#	101	#	101
XXL	#	102	#	102	#	102	#	102



**68555 PVC warning vests**

**Type**  
 Made of PVC-coated knitted fabrics. Made in compliance with EN 471 class 2. One size fits all. With double loop breech and reflective strips. Packed in poly bag.



Colour	68555	...
orange-rot fluorescent	#	101
yellow fluorescent	#	201

**68563 Trucker waistcoat**

**Type**  
 High collar, **kidney protection**, several outside pockets, 1 inside pocket, zipper with covering strip, red/black chequered cotton lining. Upper material: 65% polyester, 35% cotton.

Lining: 100% polyester. Lining: 100% cotton-fleece, colour: black.



Size	68563	...
M	#	101
L	#	102
XL	#	103
XXL	#	104
XXXL	#	105

**Info Safety shoes in compliance with EN ISO 20345**

The European standards (EN) for shoes in industrial areas.  
 EN ISO 20345 - test energy toe cap 200 joules,  
 EN ISO 20346 - test energy toe cap 100 joules,  
 EN ISO 20347 - without toe cap

EN ISO 20345	Use areas
SB	Fulfils all EN ISO 20345 basic requirements. Open heel area, toe cap with 200 Joule resistance.
S1	Full or cracked leather. Besides the basic requirements: closed heel area, energy-absorbent, antistatic, toe cap with a resistance of 200 Joule. Application: Industry, trade / dry area.
S1P	Similar to S1, but additionally with a continuously puncture-resistant midsole.
S2	Similar to S1, suitable for working on moist grounds, therefore water-resistant, and vapour-absorbent. Application: Dry areas, indoors and outdoors.
S3	Fulfils all requirements of S2, in addition to that, with continuously puncture-resistant midsole. Application: Dry and wet areas, indoors and outdoors, on construction sites and when there is a danger of nails.

**68710 Safety low shoe S1P**

**Model 64.272.0 S1P**  
**Type**  
 - **Upper:** Suede  
 - **Lining:** BreatheActive function liner  
 - **Footbed:** evercushion® pro  
 - **Sole:** TPU sole metro protect with torsion control system

- **Protection:** Aluminium cap and flexible L-protection® anti-perforation protection
- **Width:** 11
- **EN ISO 20345 S1P SRC**



German Size	68710	...
39	#	101
40	#	102
41	#	103
42	#	104
43	#	105

German Size	68710	...
44	#	106
45	#	107
46	#	108
47	#	109



68711

## Safety low shoe S1P

Model 64.273.0 S1P

## Type

- **Upper:** Suede and breathable sandwich mesh
- **Lining:** BreatheActive function liner
- **Footbed:** evercushion® pro
- **Sole:** TPU sole metro protect with torsion control system

- **Protection:** Aluminium cap and flexible L-protection® anti-perforation protection
- **Width:** 11
- **EN ISO 20345 S1P SRC.**

68711



German Size	68711	...
39	#	101
40	#	102
41	#	103
42	#	104
43		105

German Size	68711	...
44	#	106
45	#	107
46	#	108
47	#	109

68712

## Safety low shoe S3

Model 64.271.0 S3

## Type

- **Upper:** Nubuck leather
- **Lining:** BreatheActive function liner
- **Footbed:** evercushion® pro
- **Sole:** TPU sole metro protect with torsion control system

- **Protection:** Aluminium cap and flexible L-protection® anti-perforation protection
- **Width:** 11
- **EN ISO 20345 S3 SRC.**

68712



German Size	68712	...
39	#	101
40	#	102
41		103
42		104
43		105

German Size	68712	...
44	#	106
45	#	107
46		108
47	#	109

68720

## Safety low shoe S1



Gemacht aus Leidenschaft.

Model Racer S1

## Type

- **Upper:** Textile material and reflecting material inserts
- **Lining:** Breathable textile lining
- **Footbed:** Full surface insert, anti-static soft-fleece insole

- **Outsole:** Rubber/EVA sole Vibram®, heat resistant to approx. 130°, anti-static, non-slip, oil-resistant and fuel-resistant
- **Protective cap:** Plastic
- **Width:** Regular width
- **EN ISO 20345 S1**

## Note:

Reflective inserts for good visibility, low weight.

NEW

68720



German Size	68720	...
39		101
40		102
41		103
42		104
43		105

German Size	68720	...
44		106
45		107
46	#	108
47	#	109



68722 Safety low shoe S1



Model ruNNex® S1 SRC

Type

- **Upper material:** high-quality micro-fibre material combined with breathable textile inserts, toe protection material, reflective upper applications
- **Lining:** breathable ruNNex® AIRSTREAM Tec-functional lining, soft heel lining made of ruNNex® SOFTtouch

- **Sole:** Rubber sole with an EVA insole for optimal cushioning, resistant to oil, petrol and acid, high abrasion resistance, heat resistance to approx. 200 °C, cut-resistant, non-slip to SCR
- **Footbed:** breathable, insole over whole surface can be replaced
- **Protective cap:** ruNNex® Alu-protection
- **EN ISO 20345 S1 SRC.**

68722



German Size	68722	...
36	#	101
37	#	102
38	#	103
39	#	104

German Size	68722	...
40		105
41		106
42		107
43		108

German Size	68722	...
44		109
45		110
46	#	111
47	#	112

68723 Safety low shoe S3



Model ruNNex® S3 SRC

Type

- **Upper material:** Hydrophobised full-grained smooth leather, top shoe material, coloured upper applications
- **Lining:** breathable ruNNex® AIRSTREAM Tec-functional lining, soft heel lining made of ruNNex® SOFTtouch

- **Sole:** Rubber sole with an EVA insole for optimal cushioning, resistant to oil, petrol and acid, high abrasion resistance, heat resistance to approx. 200 °C, cut-resistant, non-slip to SCR
- **Footbed:** breathable, insole over whole surface can be replaced
- **Protective cap:** ruNNex® Alu-protection
- **Pierce-proof insert:** L-Protection® from Lenzi
- **EN ISO 20345 S3 SRC.**

68723



German Size	68723	...
36	#	101
37	#	102
38	#	103
39	#	104

German Size	68723	...
40	#	105
41	#	106
42		107
43		108

German Size	68723	...
44	#	109
45	#	110
46	#	111
47	#	112

68726 Safety work sandals S1P

Model Davenport S1P

Type

- **Upper:** Perforated leather
- **Lining:** SANY-DRY® - breathable, abrasion-resistant, absorbs and release moisture.
- **Outsole:** PU/TPU
- **Middle sole:** APT plate, metal-free
- **Footbed:** COFRA-Soft - anatomic, soft polyurethane with shock-absorbing effect and high slip-resistance

- **Protective cap:** Aluminium
- **Width:** 11 Mondopoint
- Extremely light and flat outsole
- Robust Velcro fastener
- **EN 20345 S1P.**

68726



German Size	68726	...
39	#	101
40	#	102
41	#	103

German Size	68726	...
42	#	104
43	#	105
44	#	106

German Size	68726	...
45	#	107
46	#	108
47	#	109

68727 Safety low shoe S3

Model Zatopek S3

Type

- **Upper:** Water-repellent leather
- **Lining:** SANY-DRY® - breathable, abrasion-resistant, absorbs and release moisture.
- **Footbed:** COFRA-Soft - anatomic, soft polyurethane with shock-absorbing effect and high slip-resistance
- **Outsole:** PU/TPU
- **Middle sole:** APT plate, metal-free

- **Protective cap:** Aluminium
- **Width:** 11 Mondopoint
- Extremely light and flat outsole
- **EN ISO 20345 S3 SRC.**

68727



German Size	68727	...
36	#	101
37	#	102
38	#	103
39	#	104

German Size	68727	...
40	#	105
41	#	106
42	#	107
43	#	108

German Size	68727	...
44	#	109
45	#	110
46	#	111
47	#	112



Special Tools / PPE