

27625 - 27627

Machine bench vises

RÖHM

27625

Type

Made of special cast iron, top pressure clamp, **long flat guide** of the movable jaws, spindle dressed to size, jaws reversible, smooth and grooved.

27627

Standard swivel base

Type

With ground bearing edge for additional support of the bench vise (for cat.-no. 27625 105 with additional clamping keyways).



27625



27627

Jaws-Width mm	Clamping-wide mm	Jaws-Height mm	Overall Height mm	Clamping-Nominal Width mm	Base plate L x W mm	Clamping force kN	Weight approx. kg	Bench vise		Swivel base	
								27625	...	27627	...
113	105	31.6	90	14	300 x 160	25	13.5		102		102
135	125	39.6	104	14	365 x 200	35	25.0		103		103
160	145	49.6	120	18	410 x 240	45	40.0		104		104
200	185	62.6	145	22	460 x 280	55	65.0		105		105

27628

Machine vises Type MSR

RÖHM

Type

Clamping system mechanical. Body made of hardened steel 60 HRC. Clamping repeating accuracy 0.02 mm.

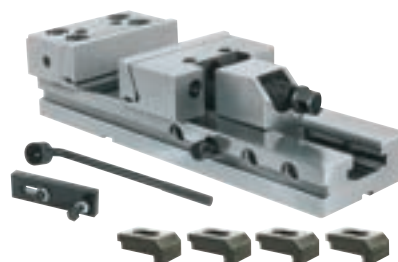
Scope of supply:

Complete with clamping wrench, workpiece limit stop and 4 clamping brackets (without T-keyway screws).

Use

For milling machines and machining centres.

Chucks-width mm	clamping-width mm	chucks-height mm	clamping keyways-width mm	baseplate L x W mm	clamping-force kN	weight ca. kg	27628	...
125	150	40	20	345 x 95	30	12.7		101
150	200	50	20	420 x 125	50	25.6		102
150	300	50	20	520 x 125	50	29.5		103
175	400	58	20	655 x 145	60	51.2		104



27628

27629

Clamping Claws for Bench Visers Type MSR

RÖHM

Type

Assembly, for mounting vises on the base. Single

Use

For cat.-no. 27628.

Note:

For professional clamping you need to have four clamps.

for For T-keyway	for BB 125		for BB 150/175	
	27629	...	27629	...
12		101		201
14		102		202
16		103		203
18		104		204



27629

27631

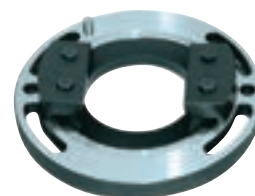
Swivel base for bench vise Type MSR

RÖHM

Use

Swivel base for machine vises Type MSR, see cat.-no. 27628.

for jaw width mm	a mm	b mm	c mm	d mm	27631	...
125	226	23	47	95		101
150	290	28	58	125		102
175	320	28	58	145		103



27631

27632 - 27635

Special jaws for bench vise type MSR

RÖHMType
Single.

Use

For cat.-no. 27628.

27632

Stepped jaws

Use

For fixed jaws.

27633

Stepped jaws

Use

For movable jaws.

27634

Prism jaws with clamping ledge

Use

For movable jaws.

27635

Centre jaw

Use

For movable jaws (for round parts).



27632



27633



27634



27635

for jaw width mm	27632	...	27633	...	27634	...	27635	...
125		101		101		101		101
150		102		102		102		102
175		103		103		103		103



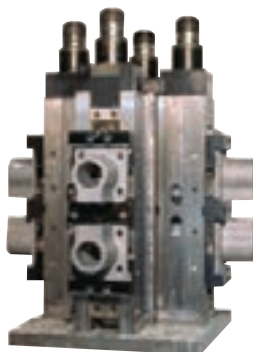
High holding force thanks to finely-serrated clamping jaws.

Precise Workpiece clamping



Flexibility with Röhmm jaws

Usable on NC compact tensioners and machine bench vises



QUATRO Clamping Tower
with four RKD NC compact tensioners arranged in a star shape



5-side machining:
Multi-clamping (unfinished parts) in RKD 125 with hold-down pronged inserts



Jaws with 4 compensating supports corrugated; Compensation $\pm 9^\circ$, movable jaws floating, without hold-down for clamping of forgings

27654

Three-Jaw Lathe Chucks



Type

Mounted on **base plate**. With one set of boring jaws stepped down towards rim and one set of turning jaws stepped down towards centre and wrench.

Use

Functions as vertical clamping fixture for large diameters. Mainly suitable for milling and boring machines.

Chuck Ø mm	Borehole mm	Base plate L x W x H mm	Keyway width mm	Weight kg	27654	...
160	42	238 x 215 x 27	14	12.7		101
200	55	278 x 255 x 27	14	20.6		102
250	76	335 x 300 x 31	18	35.5		103



27654

