

27505 - 27508

Vee-Block Machine Vises

Type

Made of special cast iron. Steel jaws with prism apertures for clamping round parts, with locating faces for flat workpieces.

Use

For use with drill stands, table and column drilling machines.

27505

Type

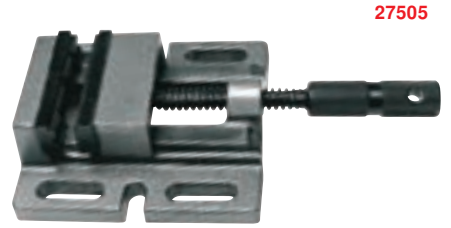
With one clamping surface and 4 longitudinal keyways.

27508

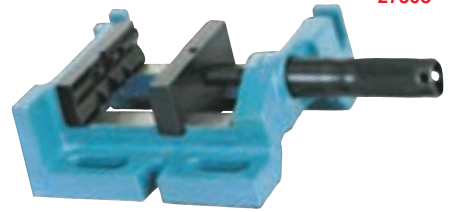


Type

With additional bearing surfaces at right angles. This permits the vise to be turned over to its right and front sides so that the workpiece can be machined on several sides without reclamping.



27505



27508

Jaw width mm	Waf mm	Jaw height mm	27505	...	27508	...
85	70	28.0		201		
100	90	28.0		202		
100	93	15.0				102
120	110	35.0		203		
150	150	13.5		104		

27510 - 27511

Prism bench vises

CEKABA

27510

Prism bench vises

Type

With offset, replaceable prism jaws. For clamping round, hexagonal and flat workpieces. Extended, hollow base for clear-through clamping and drilling of any workpieces. **Long guides across the full clamping range.** All chucks with horizontal prisms. Size 1 additional 1 vertical prism. Size 2 / 3 / 4 with 2 different sizes of vertical prism.

27511

Spare jaws

Type

Pairs.



27510



27511

Size	Jaw width mm	Clamping width mm	Overall height mm	Base plate L x W mm	Keyway width mm	Weight approx. kg	Bench vise		Spare jaws	
							27510	...	27511	...
1	80	70	62	150 x 140	12	4		101		101
2	100	115	74	280 x 180	14	9		102		102
3	125	130	85	350 x 205	14	15		103		103
4	160	225	102	460 x 255	18	29		104		104

27530

Drilling vises with quick adjustment

ATORN®

Type

Flat and sturdy, max. clamping force 10 kN, incl. of guiding machine.

Use

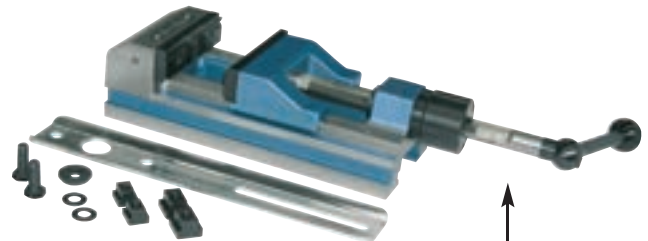
For quick and secure clamping. Usable with guiding slide, **lateral and on-the-base clamping**, one-hand operation with only one handle.

27530 101

jaw width 110 mm.

27530 102

jaw width 135 mm.



27530

Quick adjustment

Jaw width mm	Clamping width mm	Weight approx. kg	27530	...
110	130	12.5		101
135	160	19.0		102

27534 - 27536 Machine Vises/Quick-Action Vises



27534 - 27535

Type

With **large chucking capacity**. One clamping surface, **long flat guides**. **High clamping force** and clamping security. The rear jaw also has horizontal and vertical prism apertures.

27534

Type

Adjustment by means of **screw spindle**.

27535

Type

**One-hand rapid clamping** with serrated push bar. Without screw spindle.

27536

Spare jaws

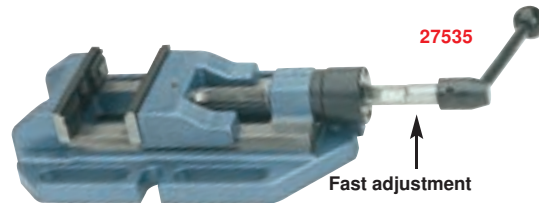
Type

Prism jaws and normal jaw with workpiece mounting, soft and burnished, in pairs.

27534

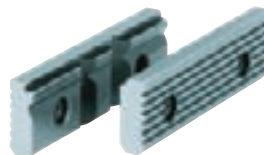


27535



Fast adjustment

27536



Jaws-Width mm	Clamping-wide mm	Jaws-Height mm	Overall Height mm	Clamping-Nominal Width mm	Base plate L x W mm	Weight approx. kg	Bench vise		Spare jaws	
							27534	27535	27536	...
90	90	25	60.0	14	195 x 145	5.5	☒ 101		☒ 101	☒ 101
110	130	32	72.5	17	315 x 175	9.5	☒ 102	☒ 101	☒ 102	☒ 102
135	160	40	80.5	17	365 x 205	13.5	☒ 103	☒ 102	☒ 103	☒ 103
160	220	50	95.5	17	445 x 245	25.0	☒ 104		☒ 104	☒ 104

27537 Vee-Block Machine Vises

Type

Multi-purpose use. **large clamping width**, flat type. The **reversible jaws** are **hardened and ground**. One jaw with horizontal and vertical prism for round material. The other jaw is grooved. Both **jaws** with one smooth face and can be **reversed**. For clamping flat parts **both jaws are recessed on the top**. Open base plate with 8 cutting flutes.

Quality

Base and moving parts made of special cast iron.

27537



Jaw width mm	Clamping width mm	Jaw height mm	Overall height mm	Weight kg	27537	...
110	130	32	72.5	9.5	☒ 101	
135	160	40	80.5	14.0	☒ 102	
160	220	50	95.5	25.5	☒ 103	

27540 - 27541 Machine bench vises

27540

Machine bench vises

Type

Made of grey cast iron, **heavy-duty type**, with **dust cover** for protection against dirt and metal chips.

27541

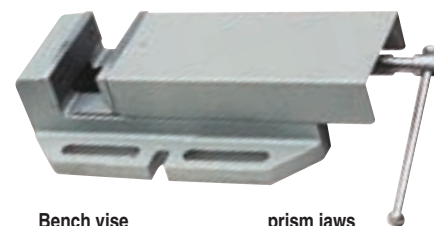
Combined stepped prism jaws

Pairs.

27541



27540



Jaw width mm	Clamping width mm	Jaw height mm	Overall height mm	Base plate L x W mm	Weight approx. kg	Bench vise		prism jaws	
						27540	...	27541	...
90	150	38	80	285 x 170	10	☒ 101		☒ 101	☒ 101
110	160	45	95	325 x 170	17	☒ 102		☒ 102	☒ 102
130	190	52	105	365 x 230	22	☒ 103		☒ 103	☒ 103
160	220	56	120	420 x 260	36	☒ 104		☒ 104	☒ 104

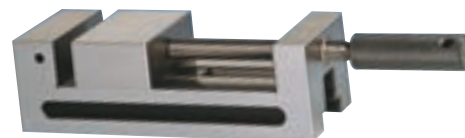
27605 Master Precision Vises

Type

Manufactured with **high precision**. Made of one piece, **hardened, parallel and true to angles**

(3 μ across all dimensions) ground on 5 sides.

27605



Size	Jaw width mm	Clamping wide mm	L x W x H mm	Jaw height mm	Weight approx. kg	27605	...
0	50	0 - 50	125 x 50 x 40	20	1.7	☒ 201	
1	65	0 - 80	180 x 65 x 65	30	4.7	☒ 202	
2	100	0 - 125	266 x 100 x 82	40	12.2	☒ 203	

