

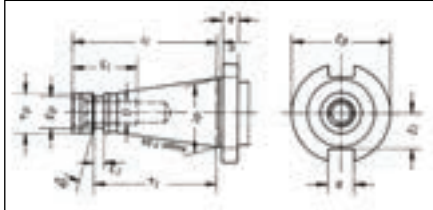
Info

Tool holding fixtures in accordance with DIN 2080

Steep taper shanks ST 30 - ST 50 with female tightening thread, manual clamping and ring nut for automatic clamping DIN 2080.

Type

Alloyed case-hardened steel, min. tensile strength 950 N/mm².
Taper angle tolerance more accurate than AT3.
Case-hardened 60-2 HRC.
Functional surfaces ground.



ST	d1 mm	a mm	b mm	k mm	G	d2 mm	d3 mm	d4 mm	l1 mm	l2 mm	l3 mm	l4 mm	l5 mm
30	31,75	1,6	16,1	8	M 12	50,0	-	17,1	68,4	16,2	-	-	24
40	44,45	1,6	16,1	10	M 16	63,0	21,1	25,0	93,4	22,5	7	82	32
50	69,85	3,2	25,7	12	M 24	97,5	32,0	39,3	126,8	35,3	13	115	47

21184

Short chucks AKL 1-16 mm

DIN 2080

Vorgew. 7000 1/min



ALBRECHT

Type

- 100% concentricity-checked, based on DIN ISO 10888
- Worm drives for high holding forces

Scope of supply:

Incl. of wrench with T-handle for high power.

Use

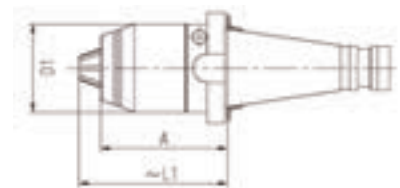
For clockwise and counterclockwise operation and quick-breaking spindles.

Note:

Other balancing grades available on request.



21184



Taper ST	Clamping range mm	A mm	D1 mm	L1 mm	21184	...
40	1 - 16	73	50	85		301

21205

Short drill chuck

DIN 2080



Type

- Short, stable and slim design
- High clamping forces caused by transmission ratio
- High precision and concentricity precision

Scope of supply:

Incl. of wrench with T-handle for high power.

Use

For clockwise and counterclockwise operation.



21205



Taper ST	Clamping range mm	l ₁ mm	d ₁ mm	l ₂ mm	21205	...
40	1.0 - 13	80.0	43	88.0		101
40	2.5 - 16	97.0	56	102.0		102

21455

Quick-Change Tapping Chucks

DIN 2080



Type

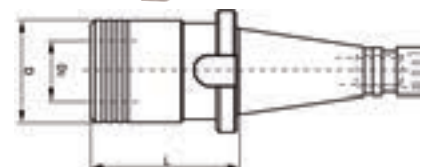
- With length compensation in response to compression and tension.

Note:

Quick-change sleeves see cat.-no. 21459 - 21460.
Draw-in bolts see cat.-no. 21733 - 21740.



21455



Taper ST	for Thread drill	Suitable inserts/size	Length compensation compr./tension mm	L mm	D mm	D ₂ mm	21455	...
40	M 3 - M 12	1	9.0/9.0	53	38	19		201
40	M 6 - M 20	2	15.0/15.0	77	55	31		202
50	M 6 - M 20	2	15.0/15.0	79	55	31		205

21510

ER collet chucks set



21510 101



Set contents	
1	High-performance drilling and milling chuck, type ER 40 clamping range 3 - 26 mm
13	Collets, type 472 E, slotted down both sides, Ø 4 / 5 / 6 / 8 / 10 / 12 / 14 / 16 / 18 / 20 / 22 / 24 / 25 mm
1	Clamping wrench

Set content	Shank	Type	21510	...
Collet set	15-part	SK 40	in plastic crate	101
Plastic crate	-	-	without content	107



21511

ER collet chucks

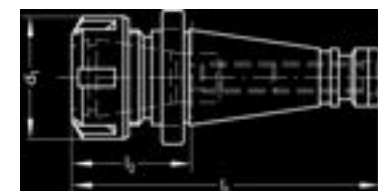


21511



Type
Precision type. High concentricity precision
Use
For clamping tools with straight shank in collets
DIN 6499-shape A and B.

Note:
Collet sets see cat.-no. 21519.
Collets see cat.-no. 21520 - 21525
and 21534 - 21539.



Taper	Clamping range	Size	Collets	l_2	l_1	d_1	21511	...
ST	mm		type	mm	mm	mm		
30	2 - 20	ER 32	ER 32/470 E	50	118.4	50		102
40	2 - 20	ER 32	ER 32/470 E	50	143.4	50		107
40	4 - 26	ER 40	ER 40/472 E	80	173.4	63		108

21542

OZ collet chucks

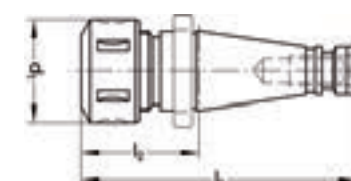


21542



Type
With ball-bearing mounted union nut.
Scope of supply:
Incl. of clamping nut.
Use
For the clamping of tools with straight
shank in collets DIN 6388.

Note:
Collets see cat.-no. 21552 - 21554.



Taper	Clamping range	for collets	l_2	d_1	21542	...
ST	mm	type	mm	mm		
30	2 - 16	415 E	50	43		101
40	2 - 25	462 E	66	60		103
40	4 - 32	467 E	95	72		104
50	2 - 25	462 E	71	60		105
50	4 - 32	467 E	73	72		106

LARGE SELECTION – EASY SEARCH

Don't forget! CATALOGUE VOLUME [2]
The universal catalogue for tools and machines.

Experience the comprehensive product selection of our
quality tools from **ATORN**

ATORN® Performance requires quality.



21600

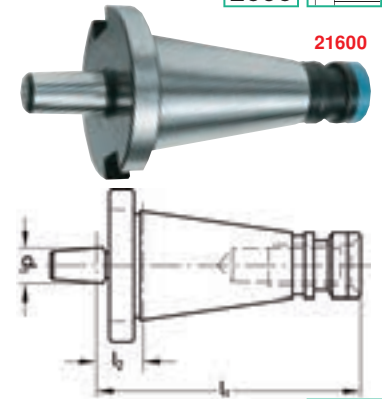
Tool adapters for drill chucks



Type
- Precision type

Use
For mounting drill chucks in milling machines.

Taper ST	Mount d ₁ DIN 238	l ₂ mm	l ₁ mm	21600	...
40	B 16	17	110.4		101
50	B 16	20	146.8		103



21600

21606

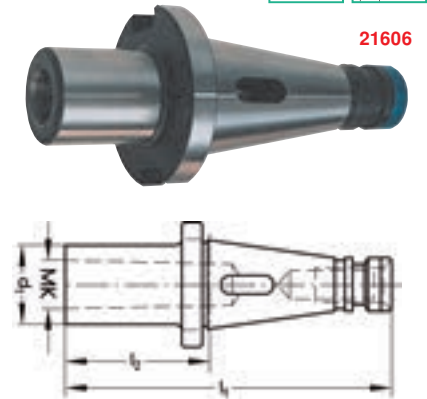
Taper sleeves



Type
- Precision type

Use
For mounting tools with MT shank and drive tang.

External taper ST	Internal taper MT	l ₂ mm	l ₁ mm	d ₁ mm	21606	...
30	2	50	118.4	32		101
40	1	50	143.4	25		102
40	2	50	143.4	32		103
40	3	65	158.4	40		105
40	4	95	188.4	48		107
50	1	45	171.8	25		109
50	2	60	186.8	32		110
50	3	65	191.8	40		112
50	4	70	196.8	48		114
50	5	105	231.8	63		116



21606

21612

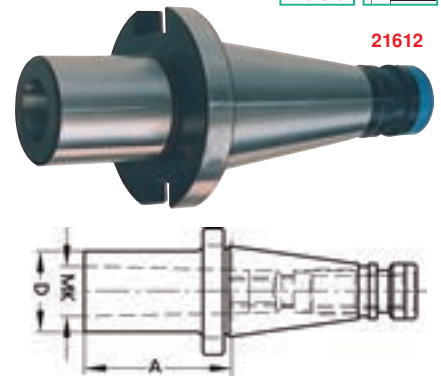
Milling sleeves



Type
- Precision type
- With installed draw-in screw

Use
For mounting tools with MT shank and draw-in thread.

External taper ST	Internal taper MT	Draw-in thread Internal	A mm	D mm	21612	...
40	2	M 10	50	32		102
40	3	M 12	65	40		103
40	4	M 16	95	48		104



21612

21617

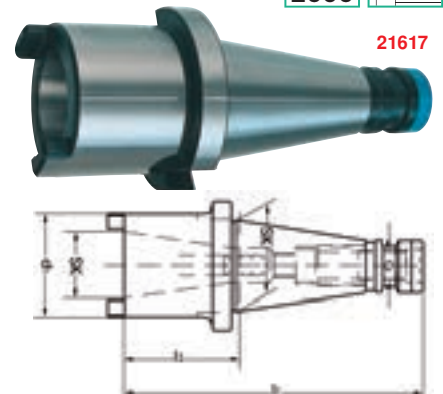
Adapter sleeve



Type
- Precision type
- With installed draw-in screw

Use
For mounting and extending ST shanks.

External taper ST	Internal taper ST	Draw-in thread external	Draw-in thread internal	l ₂ mm	l ₁ mm	d ₁ mm	21617	...
50	40	M 24	M 16	50	176.8	70		203



21617

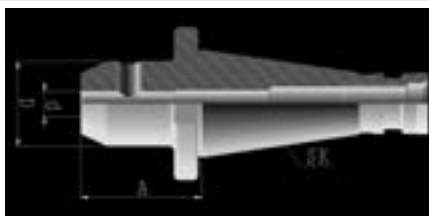
21630

Milling cutter mounts



Type
- Precision type
- Bore tolerance < 0.004 mm

Use
For clamping tools with lateral Driving face in compliance with DIN 1835 B and DIN 6535 HB.



21630

Taper	for milling cutter shank Ø d	A	D	21630	...
ST	mm	mm	mm		
40	6	50	25		201
40	8	50	28		202
40	10	50	35		203
40	12	50	42		204
40	14	50	44		205
40	16	63	48		206
40	18	63	50		207
40	20	63	52		208
40	25	80	63		210
40	32	80	72		211

Taper	for milling cutter shank Ø d	A	D	21630	...
ST	mm	mm	mm		
50	6	63	25		401
50	8	63	28		402
50	10	63	35		403
50	12	63	42		404
50	14	63	44		405
50	16	63	48		406
50	18	63	50		407
50	20	63	52		408
50	25	80	63		410
50	32	80	72		411
50	40	90	80		412

21649

Combination milling cutter arbors



Type
- Precision type
- Flat-ground supporting surfaces (precision < 0.003 mm)

Scope of supply:
Incl. of feather key, driving ring and draw-in screw.

Use
With feather key for milling cutters with longitudinal keyway e.g. DIN 841 and driving ring for milling cutters with transverse slot DIN 1880 and milling heads DIN 1830.

Note:
Driver rings, see cat.-no. 21655.
Draw-in screws, see cat.-no. 21656 and 21659.
Draw-in screw wrench, see cat.-no. 21657.



21649



Taper	d	A	D	l	21649	...
ST	mm	mm	mm	mm		
30	16	34.6	32	17		302
30	22	34.6	40	19		303
30	27	34.6	48	21		304
40	16	51.6	32	17		307
40	22	51.6	40	19		308
40	27	51.6	48	21		309
40	32	51.6	58	24		310

Taper	d	A	D	l	21649	...
ST	mm	mm	mm	mm		
40	40	51.6	70	27		311
50	16	55.2	32	17		402
50	22	55.2	40	19		403
50	27	55.2	48	21		404
50	32	55.2	58	24		405
50	40	55.2	70	27		406

21670

Milling head mounts



Type
- Precision type with enlarged and surface-ground supporting surface
- Brief unload for greater stability

Scope of supply:
Incl. of draw-in screws.

Use
For Shell End Milling Cutters and Milling Cutters with Transverse Keyway.

Note:
d = 40 mm additionally with 4 threaded holes for direct mounting.
Draw-in screws, see cat.-no. 21656 and 21659.
Draw-in screw wrench, see cat.-no. 21657.



21670



Taper	d	A	D	l	21670	...
ST	mm	mm	mm	mm		
40	22	30	48	19		305
40	27	30	58	21		306
40	32	30	78	24		307
40	40	30	88	27		308

Taper	d	A	D	l	21670	...
ST	mm	mm	mm	mm		
50	27	35	58	21		403
50	32	40	78	24		404
50	40	33	88	27		405