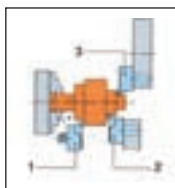


# Square-section supports

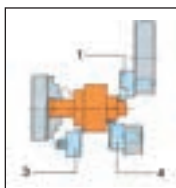
## Info

## VDI tool supports acc. to DIN 69880

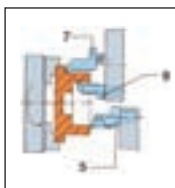
20 MnCr5 hardened to 60 +/- 2 HRC. Working surfaces ground.  
With point ball nozzle and thread nipple for pipe fittings.



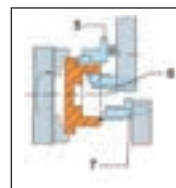
1 shape B1 and B5  
2 shape B2 and B6



3 shape B3 and B7  
4 shape B4 and B8



5 shape C1  
6 shape C2



7 shape C3  
8 shape C4



### 21903 - 21904

### Square transverse mounts shape B1/B2

DIN  
69880



#### Type

Short type.

#### Use

For external machining. For square tools.

#### 21903

#### Type

Shape B1, radial, clockwise.

#### 21904

#### Type

Shape B2, radial, counterclockwise.



21903

Shank d mm	b mm	b <sub>1</sub> mm	b <sub>2</sub> mm	h <sub>1</sub> mm	h <sub>2</sub> mm	h <sub>3</sub> mm	h <sub>4</sub> mm	l mm	l <sub>1</sub> mm	21903	...	21904	...
20	55	7.0	30.0	16	12	25.0	30	30	16	310		110	
30	70	10.0	35.0	20	16	28.0	38	40	22	311		111	
40	85	12.5	42.5	25	20	32.5	48	44	22	312		112	
50	100	16.0	50.0	32	25	35.0	60	55	30	313		113	

### 21908 - 21909

### Square transverse mounts shape B3/B4

DIN  
69880



#### Type

Short type.

#### Use

For overhead work. For square tools.

#### 21908

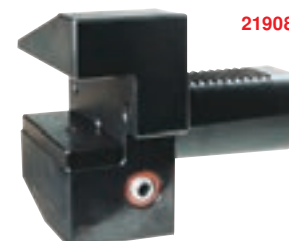
#### Type

Shape B3, radial, clockwise.

#### 21909

#### Type

Shape B4, radial, counterclockwise.



21908

Shank d mm	b mm	b <sub>1</sub> mm	b <sub>2</sub> mm	h <sub>1</sub> mm	h <sub>2</sub> mm	h <sub>3</sub> mm	h <sub>4</sub> mm	l mm	l <sub>1</sub> mm	21908	...	21909	...
20	55	7.0	30.0	16	12	30	25.0	30	16	310		110	
30	70	10.0	35.0	20	16	38	35.0	40	22	311		111	
40	85	12.5	42.5	25	20	48	42.5	44	22	312		112	
50	100	16.0	50.0	32	25	60	50.0	55	30	313		113	

### 21905 - 21906

### Square transverse mounts shape B5/B6

DIN  
69880



#### Type

Long type.

#### Use

For external machining. For square tools.

#### 21905

#### Type

Shape B5, radial, clockwise.

#### 21906

#### Type

Shape B6, radial, counterclockwise.



21905

Shank d mm	b mm	b <sub>1</sub> mm	b <sub>2</sub> mm	h <sub>1</sub> mm	h <sub>2</sub> mm	h <sub>3</sub> mm	h <sub>4</sub> mm	l mm	l <sub>1</sub> mm	21905	...	21906	...
30	100	15.0	65.0	20	16	28.0	38	40	22	311		111	
40	118	12.5	65.5	25	20	32.5	48	44	22	312		112	
50	130	16.0	80.0	32	25	35.0	60	55	30	313		113	

21911 - 21912

Square transverse mounts shape B7/B8

DIN  
69880



**Type**  
Long type.  
**Use**  
For overhead work. For square tools.

**21911**  
**Type**  
Shape B7, radial, clockwise.

**21912**  
**Type**  
Shape B8, radial, counterclockwise.



21911

Shank d mm	b mm	b <sub>1</sub> mm	b <sub>2</sub> mm	h <sub>1</sub> mm	h <sub>2</sub> mm	h <sub>3</sub> mm	h <sub>4</sub> mm	l mm	l <sub>1</sub> mm	21911	...	21912	...
30	100	15.0	65.0	20	16	38	35.0	40	22		311		111
40	118	12.5	65.5	25	20	48	42.5	44	22		312		112
50	130	16.0	80.0	32	25	60	50.0	55	30		313		113

21915

Square longitudinal mounts shape C1

DIN  
69880



**Type**  
Short type, shape C1, axial, clockwise.  
**Use**  
For face recessing. For square steel bars



21915

Shank d mm	b mm	b <sub>1</sub> mm	h <sub>1</sub> mm	h <sub>2</sub> mm	h <sub>3</sub> mm	h <sub>4</sub> mm	l mm	l <sub>1</sub> mm	l <sub>2</sub> mm	21915	...
20	52	25.5	16	12	25.0	30	50	-	30		310
30	70	17.0	20	16	28.0	38	70	10.0	30		311
40	85	20.5	25	20	32.5	48	85	12.5	30		312
50	100	25.5	32	25	35.0	60	100	16.0	40		313

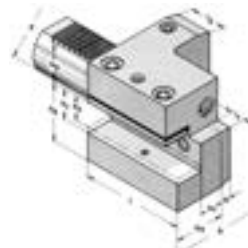
21916

Square longitudinal mounts shape C2

DIN  
69880



**Type**  
Short type, shape C2, axial, counterclockwise.  
**Use**  
For face recessing. For square tools.



21916

Shank d mm	b mm	b <sub>1</sub> mm	b <sub>2</sub> mm	h <sub>1</sub> mm	h <sub>2</sub> mm	h <sub>3</sub> mm	h <sub>4</sub> mm	l mm	l <sub>1</sub> mm	l <sub>2</sub> mm	21916	...
20	65	26.0	40.0	16	12	25.0	30	50	-	30		110
30	76	23.0	41.0	20	16	28.0	38	70	10.0	30		111
40	90	25.5	47.5	25	20	32.5	48	85	12.5	30		112
50	105	30.5	55.0	32	25	36.0	60	100	16.0	40		113

21918

Square longitudinal mounts shape C3

DIN  
69880



**Type**  
Short type, shape C3, axial, clockwise.  
**Use**  
For overhead face recessing. For square tools.



21918

Shank d mm	b mm	b <sub>1</sub> mm	h <sub>1</sub> mm	h <sub>2</sub> mm	h <sub>3</sub> mm	h <sub>4</sub> mm	l mm	l <sub>1</sub> mm	21918	...
20	52	13	16	12	30	25.0	50	-		310
30	70	17	20	16	38	35.0	70	10.0		311
40	85	21	25	20	48	42.5	85	12.5		312
50	100	26	32	25	60	50.0	100	16.0		313

Clamping Technology

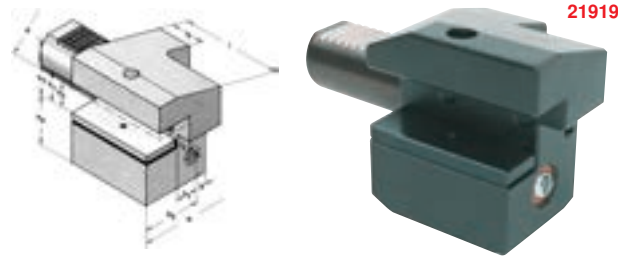
21919

Square longitudinal mounts shape C4

DIN  
69880



**Type**  
Short type, **shape C4**, axial, counterclockwise.  
**Use**  
For overhead face recessing. For square tools.



21919

Shank d mm	b mm	b <sub>1</sub> mm	b <sub>2</sub> mm	h <sub>1</sub> mm	h <sub>2</sub> mm	h <sub>3</sub> mm	h <sub>4</sub> mm	l mm	l <sub>1</sub> mm	l <sub>2</sub> mm	21919	...
20	65	26.0	43.0	16	12	30	25.0	50	-	30		110
30	76	23.0	41.0	20	16	38	35.0	70	10.0	30		111
40	90	25.5	47.5	25	20	48	42.5	85	12.5	30		112
50	105	30.5	50.0	32	25	60	50.0	100	16.0	40		113

21920

Mounts for twist drills for reversible cutting inserts shape E1

DIN  
69880



**Type**  
With internal coolant feed, **shape E1**, axial.

**Use**  
For mounting drilling tool tips.

Shank d mm	d <sub>1</sub> mm	D mm	D <sub>1</sub> mm	h mm	l mm	l <sub>1</sub> mm	Boring depth mm	21920	...
20	20	50	40	22.0	60	18	54		201
20	25	50	45	22.0	66	18	59		202
30	20	68	40	28.0	66	22	54		203
30	25	68	45	28.0	71	22	59		204
30	32	68	52	28.0	75	22	63		205
40	20	83	40	32.5	66	22	54		206
40	25	83	45	32.5	71	22	59		207
40	32	83	52	32.5	75	22	63		208
40	40	83	60	32.5	85	22	73		209
50	20	98	40	35.0	66	30	54		210
50	25	98	45	35.0	71	30	59		211
50	32	98	52	35.0	75	30	63		212
50	40	98	60	35.0	85	30	73		213



21920

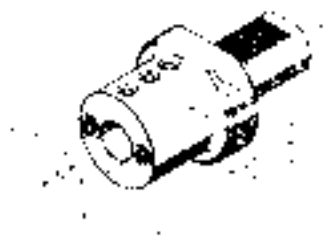
21922

Boring bar mounts shape E2

DIN  
69880



**Type**  
With coolant feed via spray nozzles, **shape E2**, axial.  
**Use**  
For mounting boring bars.



21922

Shank d mm	d <sub>1</sub> mm	D mm	D <sub>1</sub> mm	h mm	l mm	l <sub>1</sub> mm	21922	...
20	8	50	40	25.0	50	15		101
20	10	50	40	25.0	50	15		102
20	12	50	40	25.0	50	15		103
20	16	50	44	25.0	50	15		104
20	20	50	49	25.0	50	-		105
20	25	50	54	25.0	50	-		106
30	8	68	50	28.0	60	21		107
30	10	68	50	28.0	60	21		108
30	12	68	50	28.0	60	21		109
30	16	68	55	28.0	60	21		110
30	20	68	55	28.0	60	21		111
30	25	68	55	28.0	60	21		112
30	32	68	68	28.0	75	-		113
40	8	83	50	32.5	75	21		114

Shank d mm	d <sub>1</sub> mm	D mm	D <sub>1</sub> mm	h mm	l mm	l <sub>1</sub> mm	21922	...
40	10	83	50	32.5	75	21		115
40	12	83	50	32.5	75	21		116
40	16	83	55	32.5	75	21		117
40	20	83	55	32.5	75	21		118
40	25	83	60	32.5	75	21		119
40	32	83	72	32.5	75	21		120
40	40	83	83	32.5	85	-		121
50	12	98	56	35.0	90	25		122
50	16	98	56	35.0	90	25		123
50	20	98	56	35.0	90	25		124
50	25	98	65	35.0	90	25		125
50	32	98	68	35.0	90	25		126
50	40	98	80	35.0	90	25		127



21924

## OZ collet chuck E3

DIN  
69880**HHW**

## Type

Coolant feed via collet,  
shape E3, axial.

## Use

For centring and drilling.



21924

## Note:

OZ collets see cat.-no. 21552 - 21554.

Shank d mm	D mm	D <sub>1</sub> mm	h mm	l mm	l <sub>1</sub> mm	Clamping range Ø mm	for collets type	21924	...
20	50	43	22.0	55	18	2 - 16	410 E/415 E		101
30	68	60	28.0	75	30	2 - 25	444 E/462 E		102
40	83	60	32.5	75	22	2 - 25	444 E/462 E		103
40	83	72	32.5	90	22	4 - 32	450 E/467 E		104
50	98	72	35.0	90	30	4 - 32	450 E/467 E		106

21926

## ER collet chuck E4

DIN  
69880**HHW**

## Type

Coolant feed via the collet,  
shape E4, axial.

## Use

For centring and drilling.



21926

## Note:

ER collets see cat.-no. 21519 - 21528.

Shank d mm	D mm	D <sub>1</sub> mm	h mm	l mm	l <sub>1</sub> mm	Clamping range Ø mm	for collets type	21926	...
20	50	42	25.0	55	18	1 - 16	ER/ESX 25/430 E		201
30	68	42	28.0	55	22	1 - 16	ER/ESX 25/430 E		203
30	68	50	28.0	55	22	2 - 20	ER/ESX 32/470 E		204
40	83	50	32.5	75	22	2 - 20	ER/ESX 32/470 E		205
40	83	63	32.5	75	22	3 - 26	ER/ESX 40/472 E		206

21929

## Short drill chuck

DIN  
69880**ATORN®**

## Type

Short type, wear parts hardened and ground,  
high true-running accuracy.

## Scope of supply:

Incl. of wrench with T-handle for high power.



21929

Shank d1 mm	Clamping range Ø mm	D mm	A mm	21929	...
30	1 - 16	50	87		102
40	1 - 16	50	87		103

21930

## Morse taper shank mounts shape F1

DIN  
69880**HHW**

## Type

Shape F1, axial.

## Use

For mounting tools with MT shank.

Shank d mm	MT	D mm	D <sub>1</sub> mm	h mm	l mm	l <sub>1</sub> mm	21930	...
20	1	50	50	25.0	22	-		201
30	1	68	52	28.0	25	25		203
30	2	68	58	28.0	42	25		204
30	3	68	68	28.0	66	-		205
40	2	83	58	32.5	34	25		206
40	3	83	64	32.5	58	25		207
40	4	83	72	32.5	86	25		208
50	2	98	-	35.0	25	-		209
50	3	98	64	35.0	42	25		210
50	4	98	72	35.0	71	25		211



21930



21935

Feed, tapping chuck

DIN 69880



Type

With Length compensation in response to compression and tension.

Use

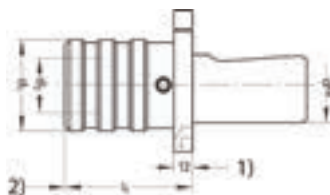
For mounting quick-change tapping chuck sleeves.

Note:

Quick-change sleeves see cat.-no. 21459 - 21460.

1) Clamping ring,

2) Insert mount.



21935

Size	Shank d h <sub>6</sub> mm	for taps	l <sub>1</sub> mm	d <sub>1</sub> mm	d <sub>2</sub> mm	Length compensation compr./tension mm	21935	...
1	20	M 3 - 12	55	38	19	9/9		201
1	30	M 3 - 12	55	38	19	9/9		202
2	30	M 6 - 20	77	55	31	15/15		203
1	40	M 3 - 12	55	38	19	9/9		204
2	40	M 6 - 20	77	55	31	15/15		205

21937

Feed, tapping chuck

DIN 69880



Type

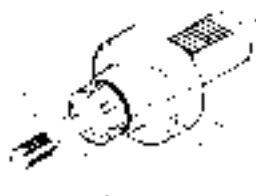
With Length compensation in response to compression and tension.

Use

For mounting collets with inner square.

Note:

Collets see cat.-no. 21527.



21937

Shank d mm	D mm	D <sub>1</sub> mm	h <sub>3</sub> mm	l mm	d <sub>1</sub> mm	Taps	Length compensation mm	21937	...
30	68	42	28.0	75	1 - 16	M 4 - M 20	15		201
40	83	42	32.5	75	1 - 16	M 4 - M 20	15		202

21940

Cutting-Off Tool holders

DIN 69880

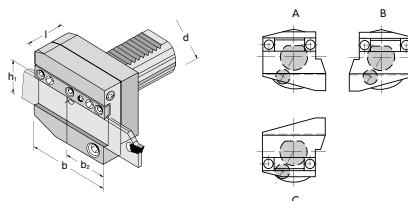


Type

With mount for cut-off blades.

Note:

Cut-off blades see cat.-no. 18672 and 18680.



21940

Shank d mm	b mm	b <sub>2</sub> mm	h <sub>1</sub> mm	l mm	Diagram	21940	...
30	70	35.0	26.0	50	A = clockwise		101
30	70	35.0	26.0	50	B = counterclockwise		102
30	70	35.0	26.0	50	C = overhead		103
40	85	42.5	32.0	50	A = clockwise		105
40	85	42.5	32.0	50	B = counterclockwise		106
40	85	42.5	32.0	50	C = overhead		107

21942

Workpiece stops

DIN 69880

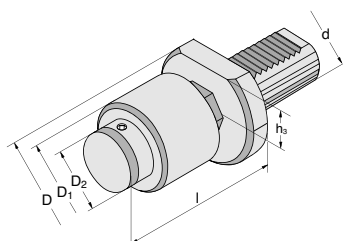


Type

Live exchangeable stop surface with length adjustment.

Use

For the exact positioning of workpieces.



21942

Shank d mm	D mm	D <sub>1</sub> mm	D <sub>2</sub> mm	h <sub>3</sub> mm	l mm	21942	...
30	68	38	25	28.0	65 - 100		101
40	83	60	40/80	32.5	80 - 150		102

21947

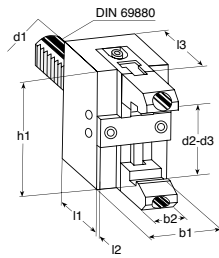
Rod gripper chucks

DIN 69880



**Type**  
Complete with 2 sets of gripper jaws.

**Use**  
The bar gripper is used primarily as a gripper chuck for advancing bars. This eliminates the use of a bar feed unit and workpiece stop.



21947

Shank VDI d1 mm	Clamping range 1 d2 mm	Clamping range 2 d3 mm	b1 mm	b2 mm	h1 mm	l1 mm	l2 (stroke) mm	l3 mm	21947	...
20	6 - 56	54 - 110	50	28	72	46	4	51		201
30	6 - 56	54 - 110	50	28	72	46	4	51		202
40	10 - 60	54 - 110	60	28	110	48	4	53		203

21923

Reduction sleeves



**Type**  
Suitable for Tool holders Form E2, see Cat. No. 21922. Suitable for internal cooling.

**Use**  
For reduction of tools with straight shank e.g. boring bars and fine turning tools.



21923

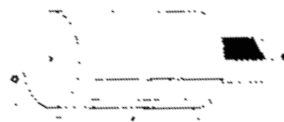
d1 mm	d mm	L mm	21923	...	d1 mm	d mm	L mm	21923	...
25	6	50		101	32	16	70		113
25	8	50		102	32	20	70		114
25	10	50		103	32	25	80		115
25	12	50		104	40	6	80		116
25	14	50		105	40	8	80		117
25	16	50		106	40	10	80		118
25	20	70		107	40	12	80		119
32	6	70		108	40	14	80		120
32	8	70		109	40	16	80		121
32	10	70		110	40	20	80		122
32	12	70		111	40	25	80		123
32	14	70		112	40	32	80		124

21901

Unfinished parts A2

DIN 69880

**Type**  
Round, unhardened, but with hardened and ground shank, dimensions in compliance with DIN 69880 -part 2- shape A2.



21901

Shank d mm	D mm	l mm	21901	...
20	50	70		201
30	68	240		202
40	83	320		203
50	98	400		204

21943 - 21944

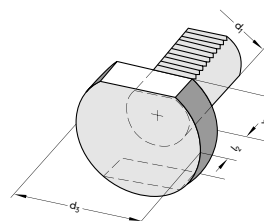
Protective plugs

DIN 69880

**Use**  
To protect empty mounts in the revolving head.

**21943**  
**Type**  
Made of plastics.

**21944**  
**Type**  
Made of steel.



21943

21944

Shank d1 mm	d3 mm	h1 mm	l2 mm	21943	...	21944	...
30	68	28.0	16		101		101
40	83	32.5	20		102		102