

21541

OZ collet chucks

DIN
228

A

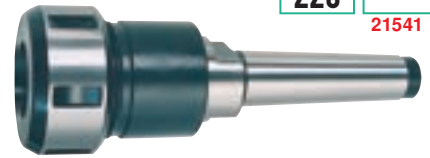
21541

Type

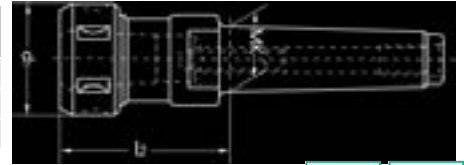
Morse taper shank with internal draw-in thread.
With clamping nut.

Note:

Collets see cat.-no. 21552 - 21554.



Taper MT / draw-in thread	Clamping range mm	for collets Type	l ₂ mm	d ₁ mm	21541	...
2 / M 10	2 - 16	415 E	62	43		100
3 / M 12	2 - 25	462 E	70	60		101
4 / M 16	2 - 25	462 E	70	60		102



21648

Combination milling cutter arbors

DIN
228

A

21648

Type

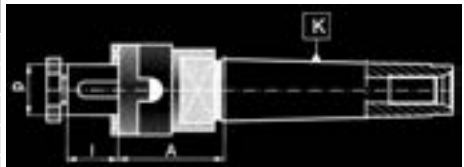
Morse taper shank with internal draw-in thread.

Use

With feather key for milling cutters with longitudinal keyway e.g. DIN 841 and driving ring for milling cutters with transverse slot DIN 1880 and milling heads DIN 1830.



Taper MT	d mm	A mm	l mm	21648	...
3	16	48	17		101
3	22	48	19		102
3	27	48	21		103
4	22	55	19		106
4	27	55	21		107



Info

Tool supports acc. to DIN 69893

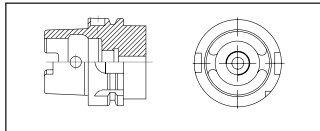
Type

Alloyed case-hardened steel, min. tensile strength 950 N/mm². Taper tolerance less than AT3 acc. to DIN 7187 and DIN 2080.
The case hardness and case depth are adapted to suit each support.
In order to avoid breakage or cracks, the thin-walled HSK chucks are not full-hardened.

The different shapes of the hollow shank taper DIN 69893:

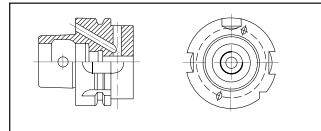
Hollow shank taper HSK for automatic tool exchange with gripper groove

Shape A



- For machining centres with automatic tool changing.
- Central coolant supply through coolant tube.

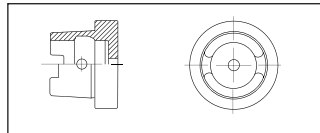
Shape B



- For machining centres and turning machines with automatic tool changing.
- Enlarged contact.
- Coolant through flange or central with coolant tube.

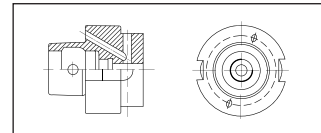
Hollow shank taper HSK for manual tool changing without gripper groove

Shape C



- Preferred type in transfer lines and special machines with manual tool exchange.
- Central coolant supply.

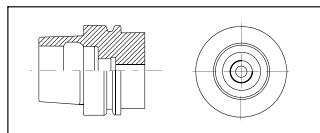
Shape D



- For applications requiring good support through face rest.
- Manual tool exchange.
- Enlarged contact.
- Coolant through flange or central with coolant tube.

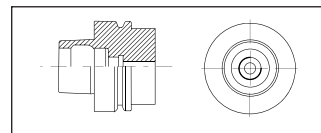
Hollow shank taper HSK for high rotational speed applications during high speed machining (HSC) with gripper groove

Shape E



- Preferred for high-speed machining.
- Symmetric without driver slots.
- Central coolant supply possible through coolant tube.

Shape F



- Enlarged contact.
- Central coolant supply possible through coolant tube.



Shrinking chucks

21597

Shrinking chucks

DIN
69893

A



G 2.5
24000
1/min



HSC

HPC

diebold

Type

- Maximum concentricity precision and taper tolerance
- Manufactured in an air-conditioned production facility

Advantages:

- High holding forces and long service life through use of **high-quality hot-working steels** and specialist heat treatment processes

- Patented pre-width enables automatic shrink-fit process and simplified handling

Use

Suitable for clamping carbide, HSS, and steel shanks with a tolerance of h6.

Note:

Coolant tube see cat.-no. 21864.

Wrench for coolant tube see cat.-no. 21865.

Shrink-fit positions see cat.-no. 21588 - 21595.

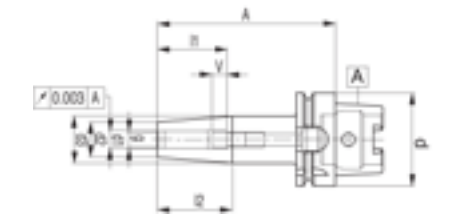
21597 501-525

- Slim, coated in stainless material

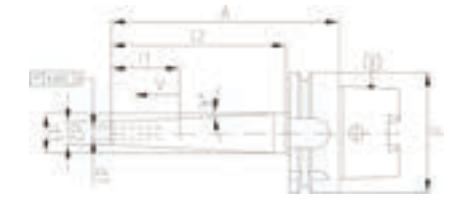


HSK	d1 mm	d2 mm	d3 mm	l1 mm	l2 mm	A mm	V mm	g	21597	...
63	3	15	20	20	30	90	5	M 6	101	
63	4	15	20	20	30	90	5	M 6	102	
63	5	15	20	25	30	90	5	M 6	103	
63	6	21	27	36	45	80	10	M 5	104	
63	8	21	27	36	45	80	10	M 6	105	
63	10	24	32	42	50	85	10	M 8 x 1	106	
63	12	24	32	47	50	90	10	M 10 x 1	107	
63	14	27	34	47	50	90	10	M 10 x 1	108	
63	16	27	34	50	50	95	10	M 12 x 1	109	
63	18	33	42	50	57	95	10	M 12 x 1	110	
63	20	33	42	52	57	100	10	M 16 x 1	111	
63	25	44	53	58	57	115	10	M 16 x 1	112	
63	32	44	53	62	57	120	10	M 16 x 1	113	
63 L	6	21	27	36	45	120	10	M 5	201	
63 L	8	21	27	36	45	120	10	M 6	202	
63 L	10	24	32	42	50	120	10	M 8 x 1	203	
63 L	12	24	32	47	50	120	10	M 10 x 1	204	
63 L	14	27	34	47	50	120	10	M 10 x 1	205	
63 L	16	27	34	50	50	120	10	M 12 x 1	206	
63 L	18	33	42	50	57	120	10	M 12 x 1	207	
63 L	20	33	42	52	57	120	10	M 16 x 1	208	
63 XL	6	21	32	36	45	160	10	M 5	301	
63 XL	8	21	32	36	45	160	10	M 6	302	
63 XL	10	24	34	42	50	160	10	M 8 x 1	303	
63 XL	12	24	34	47	50	160	10	M 10 x 1	304	
63 XL	14	27	42	47	50	160	10	M 10 x 1	305	
63 XL	16	27	42	50	50	160	10	M 12 x 1	306	
63 XL	18	33	51	50	57	160	10	M 12 x 1	307	
63 XL	20	33	51	52	57	160	10	M 16 x 1	308	
63 XL	25	44	53	58	57	160	10	M 16 x 1	309	
63 XL	32	44	53	62	57	160	10	M 16 x 1	310	

21597 101-310



21597 501-525



HSK	d1 mm	d2 mm	d3 mm	l1 mm	l2 mm	A mm	V mm	g	slim 21597	...
63	3	9	13	20	40	70	5	M 6	501	
63	4	10	14	20	40	70	5	M 6	502	
63	6	12	18	36	60	90	5	M 5	503	
63	8	14	20	36	60	90	5	M 6	504	
63	10	16	22	42	60	90	5	M 8 x 1	505	
63	12	18	24	47	60	90	5	M 10 x 1	506	
63	16	22	28	50	60	90	5	M 12 x 1	507	
63 L	3	9	16	20	70	100	5	M 6	510	
63 L	4	10	17	20	70	100	5	M 6	511	
63 L	6	12	21	36	90	120	5	M 5	512	
63 L	8	14	23	36	90	120	5	M 6	513	
63 L	10	16	25	42	90	120	5	M 8 x 1	514	
63 L	12	18	27	47	90	120	5	M 10 x 1	515	
63 L	16	22	31	50	90	120	5	M 12 x 1	516	
63 XL	3	9	19	20	100	130	5	M 6	519	
63 XL	4	10	20	20	100	130	5	M 6	520	
63 XL	6	12	24	36	120	150	5	M 5	521	
63 XL	8	14	26	36	120	150	5	M 6	522	
63 XL	10	16	28	42	120	150	5	M 8 x 1	523	
63 XL	12	18	30	47	120	150	5	M 10 x 1	524	
63 XL	16	22	34	50	120	150	5	M 12 x 1	525	

Clamping Technology



diebold**Type**

- Maximum concentricity precision and taper tolerance
- Manufactured in an air-conditioned production facility

Advantages:

- High holding force and long service life through use of **high-quality hot-working steels** and specific heat treatment processes
- **Patented pre-width** facilitates automatic shrink process and simplified handling

Use

Suitable for clamping carbide, HSS, and steel shanks with a tolerance of h6.

Note:

Shrink-fit positions see Cat. Nos. 21588 to 21595.

21599 201-223**Type**

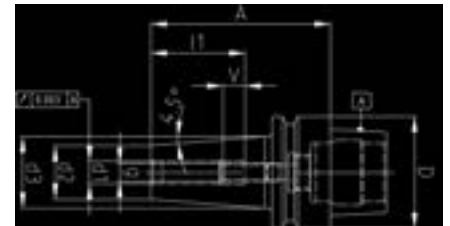
- Slim, **coated in stainless material**

HSK	d1 mm	d2 mm	d3 mm	l1 mm	A mm	V mm	g	21599	...
40	3	15	20	20	60	5	M 6		101
40	4	15	20	20	60	5	M 6		102
40	5	15	20	25	60	5	M 6		103
40	6	21	27	36	65	-	-		104
40	8	21	27	36	65	-	-		105
40	10	24	30	42	65	-	-		106
40	12	24	30	47	65	-	-		107
40	14	27	34	47	65	-	-		108
40	16	27	34	50	65	-	-		109
40 L	3	15	20	20	80	5	M 6		110
40 L	4	15	20	20	80	5	M 6		111
40 L	5	15	20	25	80	5	M 6		112
40 L	6	21	27	36	80	10	M 5		113
40 L	8	21	27	36	80	10	M 6		114
40 L	10	24	32	42	80	10	M 8 x 1		115
40 L	12	24	32	47	90	10	M 10 x 1		116
40 L	14	27	34	47	90	10	M 10 x 1		118
40 L	16	27	34	50	90	10	M 12 x 1		119
40 XL	3	15	20	20	120	5	M 6		120
40 XL	4	15	20	20	120	5	M 6		121
40 XL	5	15	20	25	120	5	M 6		122
40 XL	6	21	27	36	120	10	M 5		123
40 XL	8	21	27	36	120	10	M 6		124
40 XL	10	24	32	42	120	10	M 8 x 1		125
40 XL	12	24	32	47	120	10	M 10 x 1		126
40 XL	14	27	34	47	120	10	M 10 x 1		127
40 XL	16	27	34	44	120	10	M 12 x 1		128

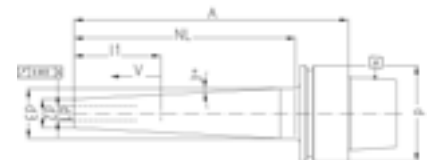
HSK	d1 mm	d2 mm	d3 mm	l1 mm	NL mm	A mm	V mm	g	slim	
									21599	...
40	3	9	12	20	24	50	5	M 6		201
40	4	10	13	20	24	50	5	M 6		202
40	6	12	15	34	24	50	-	-		203
40	6	12	16	36	38	60	-	-		204
40	8	14	18	36	38	60	-	-		205
40	10	16	20	42	38	60	-	-		206
40	12	18	22	42	38	60	-	-		207
40 L	3	9	13	20	40	64	5	M 6		208
40 L	4	10	14	20	40	64	5	M 6		209
40 L	6	12	18	36	60	84	5	M 5		210
40 L	8	14	20	36	60	84	5	M 6		211
40 L	10	16	22	42	60	84	5	M 8 x 1		212
40 L	12	18	24	47	60	84	5	M 10 x 1		213
40 XL	3	9	16	20	70	94	5	M 6		214
40 XL	4	10	17	20	70	94	5	M 6		215
40 XL	6	12	21	36	90	114	5	M 5		216
40 XL	8	14	23	36	90	114	5	M 6		217
40 XL	10	16	25	42	90	114	5	M 8 x 1		218
40 XL	12	18	27	47	90	114	5	M 10 x 1		219
40 XXL	6	12	24	36	120	114	5	M 5		220
40 XXL	8	14	26	36	120	114	5	M 6		221
40 XXL	10	16	28	42	120	114	5	M 8 x 1		222
40 XXL	12	18	30	47	120	114	5	M 10 x 1		223



21599 101-128



21599 201-223



21807 - 21808 Shrinking chucks

DIN 69893

A



G 2.5
25000
1/min

≤ 3µm



Type

- Slim design.
- Made of specialist temperature-resistant hot-working steel
- With additional threads around circumference
- For subsequent balancing
- With Balluf chip bore
- Made in Germany

Scope of supply:

- With installed detent screw

Use

For inductive shrink-fitting HSS and HM tools with a shank tolerance of h6 and better.

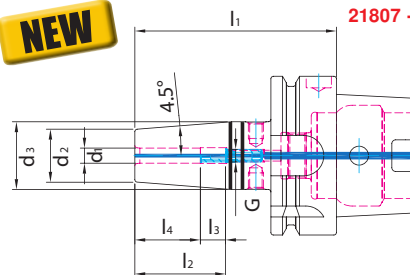
21807

- Without coolant duct bores (KKB)

21808

- With resealable cooling duct bores (KKB)

NEW



21807 - 21808

short		without KKB							with KKB			
Taper HSK	d ₁ mm	l ₁ mm	d ₂ mm	d ₃ mm	l ₂ mm	l ₃ mm	l ₄ mm	G	21807	...	21808	...
63	3	80	10	15	28	16	12	M 6		101		101
63	4	80	15	22	28	12	16	M 6		102		102
63	5	80	15	22	30	10	20	M 6		103		103
63	6	80	21	27	36	10	26	M 5		104		104
63	8	80	21	27	36	10	26	M 6		105		105
63	10	85	24	32	41	10	31	M 8 x 1		106		106
63	12	90	24	32	47	10	37	M 10 x 1		107		107
63	14	90	27	34	47	10	37	M 10 x 1		108		108
63	16	90	27	34	50	10	40	M 12 x 1		109		109
63	18	95	33	42	50	10	40	M 12 x 1		110		110
63	20	100	33	42	52	10	42	M 16 x 1		111		111
63	25	115	44	53	58	10	48	M 16 x 1		112		112

21807 101-112



medium length		without KKB							with KKB			
Taper HSK	d ₁ mm	l ₁ mm	d ₂ mm	d ₃ mm	l ₂ mm	l ₃ mm	l ₄ mm	G	21807	...	21808	...
63	3	120	10	20	-	-	12	-		201		201
63	4	120	15	22	-	-	16	-		202		202
63	5	120	15	22	-	-	20	-		203		203
63	6	120	21	27	36	10	26	M 5		204		204
63	8	120	21	27	36	10	26	M 6		205		205
63	10	120	24	32	41	10	31	M 8 x 1		206		206
63	12	120	24	32	47	10	37	M 10 x 1		207		207
63	14	120	27	34	47	10	37	M 10 x 1		208		208
63	16	120	27	34	50	10	40	M 12 x 1		209		209
63	18	120	33	42	50	10	40	M 12 x 1		210		210
63	20	120	33	42	52	10	42	M 16 x 1		211		211

21807 201-211



long		without KKB								
Taper HSK	d ₁ mm	l ₁ mm	d ₂ mm	d ₃ mm	l ₂ mm	l ₃ mm	l ₄ mm	G	21807	...
63	3	160	10	20	-	-	12	-		301
63	4	160	15	22	-	-	16	-		302
63	5	160	15	22	-	-	20	-		303
63	6	160	21	27	36	10	26	M 5		304
63	8	160	21	27	36	10	26	M 6		305
63	10	160	24	32	41	10	31	M 8 x 1		306
63	12	160	24	32	47	10	37	M 10 x 1		307
63	14	160	27	34	47	10	37	M 10 x 1		308
63	16	160	27	34	50	10	40	M 12 x 1		309
63	18	160	33	42	50	10	40	M 12 x 1		310
63	20	160	33	42	52	10	42	M 16 x 1		311

21807 301-311



extra long		without KKB								
Taper HSK	d ₁ mm	l ₁ mm	d ₂ mm	d ₃ mm	l ₂ mm	l ₃ mm	l ₄ mm	G	21807	...
63	6	200	21	27	36	10	26	M 5		404
63	8	200	21	27	36	10	26	M 6		405
63	10	200	24	32	41	10	31	M 8 x 1		406
63	12	200	24	32	47	10	37	M 10 x 1		407
63	14	200	27	34	47	10	37	M 10 x 1		408
63	16	200	27	34	50	10	40	M 12 x 1		409
63	18	200	33	42	50	10	40	M 12 x 1		410
63	20	200	33	42	52	10	42	M 16 x 1		411

21807 404-411



21829

Short drill chuck

DIN
69893

A

G 6.3
12000
1/min**ATORN®**

Type

- Short design
- Wearing parts hardened and ground

Scope of supply:

Incl. of wrench with T-handle for high power.

Use

For clockwise and counterclockwise operation.

Note:

Coolant tube see cat.-no. 21864.

Wrench for coolant tube see cat.-no. 21865.

21829



HSK	Clamping range mm	A mm	D mm	21829	...
63	1 - 16	100	50		201

21838

Quick-Change Tapping Chucks

DIN
69893

A

**HHW**

Type

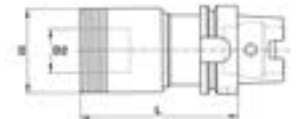
- Precision type with length compensation in response to compression and tension

Note:

Quick-change sleeves see

cat.-no. 21459 - 21460.

21838



HSK	for taps drill	Suitable inserts/size	Length compensation compr./tension mm	L mm	D Ø mm	D ₂ Ø mm	21838	...
63	M 3 - M 12	1	7.5/7.5	72	41	19		101
63	M 6 - M 20	2	10/10	110	60	31		102

21837

Quick-change tapping chuck for synchronous spindles

DIN
69893

A

**ATORN®**

Type

- Minimal length compensation applied by damping element
- Safe clamping in fast-release inserts for ER collets
- Clamping screws as torsion failsafe for clamping tap drill.

Use

For use on drilling rigs and machining centres with synchronous spindles.

Note:

Quick-change sleeves see cat.-no. 21465.

21837



HSK-A	d mm	D mm	A mm	Length compensation compr./tension mm	for thread- drill	21837	...
63	20	43	64	0.2/1.0	M 3 - M 12		101
63	32	60	97	0.2/1.0	M 6 - M 20		102

21840

Hydro-expansion collet, short, heavy

DIN
69893

A

G 2.5
25000
1/min**ATORN®**

Type

- High concentricity precision and maximum torque transmission
- Vibration-damping tool clamping
- Easy to operate
- High positioning and repeat precision
- Made in Germany

Scope of supply:

Incl. of Hexagon cross-grip wrench

Use

For rough milling, drilling and reaming.
All standard shanks can be clamped.

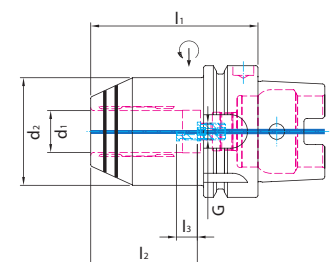
Note:

Reducing sleeves, see cat.-no. 21581.

Draw-in bolts see cat.-no. 21733 - 21740.

Wrench for coolant tube see cat.-no. 21865.

21840

NEW

HSK	d ₁ mm	d ₂ mm	l ₁ mm	l ₂ mm	l ₃ mm	G	waf mm	21840	...
63	20	52	80	51	10	M 8 x 1	3		050

21847

HHD roughing chuck

DIN 69893

A



G 2.5
25000
1/min



ATORN®

Type

- Further development of the standard expansion chuck
- Best torque transmission
- High damping properties
- High temperature resistance

Advantage:

- All standard shafts can be clamped

Use

For heavy-duty machining in respect of HSC, HPC and TF milling.

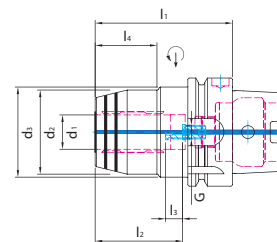
Note:

Reduction sleeves see cat.-no. 21581.

NEW



21847



HSK	d ₁ mm	d ₂ mm	d ₃ mm	l ₁ mm	l ₂ mm	l ₃ mm	l ₄ mm	g mm	waf mm	21847	...
63	12	42	52.5	80	46	10	34	M 8 x 1	3		101
63	20	49	52.5	80	51	10	36	M 8 x 1	3		102

21841

Arbors for milling cutters with draw-in thread

DIN 69893

A



G 6.3
15000
1/min



HSC

HHW

Type

- Precision type.
- Outer taper and interference fit ground

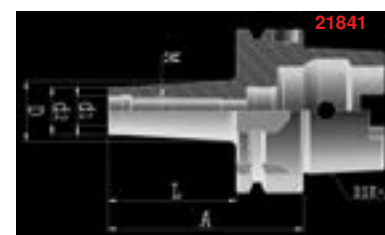
Use

For mounting screw-in milling cutters with thread.

Note:

Coolant tube see cat.-no. 21864.

Wrench for coolant tube see cat.-no. 21865.



21841

HSK	d1 mm	d2 mm	D mm	A mm	L mm	M	extra short	
							21841	...
63	6.5	10	13	51	25	6		101
63	8.5	13	15	51	25	8		102
63	10.5	18	20	51	25	10		105
63	12.5	21	24	51	25	12		109
63	17.0	29	29	51	25	16		114

HSK	d1 mm	d2 mm	D mm	A mm	L mm	M	short	
							21841	...
63	8.5	13	23	76	50	8		103
63	10.5	18	23	76	50	10		106
63	12.5	21	24	76	50	12		110
63	17.0	29	34	76	50	16		115

HSK	d1 mm	d2 mm	D mm	A mm	L mm	M	medium length	
							21841	...
63	8.5	13	23	101	75	8		104
63	12.5	21	31	101	75	12		111
63	17.0	29	34	101	75	16		116

HSK	d1 mm	d2 mm	D mm	A mm	L mm	M	long	
							21841	...
63	10.5	18	32	126	100	10		107
63	12.5	21	33	126	100	12		112
63	17.0	29	36	126	100	16		117

HSK	d1 mm	d2 mm	D mm	A mm	L mm	M	extra long	
							21841	...
63	10.5	18	36.5	176	150	10		108
63	12.5	21	40	176	150	12		113
63	17.0	29	42.5	176	150	16		118



Clamping Technology



21843

ER collet chucks

DIN 69893 A  G 2.5 25000 1/min 



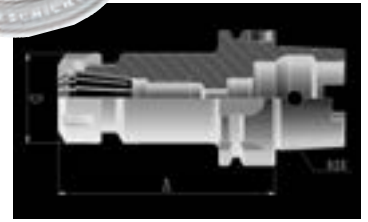
Type
- Precision type.
- High concentricity precision

Use
For clamping tools with straight shank in collets
DIN 6499-shape A and B.

Note:
Collet sets see cat.-no. 21519.
Collets see cat.-no. 21520 - 21525 and 21534 - 21539.
Coolant tube see cat.-no. 21864.
Wrench for coolant tube see cat.-no. 21865.



21843



medium length

HSK - ER	Clamping range mm	Collets type	A mm	D Ø mm	21843	...
63 - 16	1 - 10	ER 16	100	32		301
63 - 25	2 - 16	ER 25	100	42		303
63 - 32	2 - 20	ER 32	100	50		305
63 - 40	3 - 26	ER 40	120	63		307



long

HSK - ER	Clamping range mm	Collets type	A mm	D Ø mm	21843	...
63 - 16	1 - 10	ER 16	160	32		302
63 - 25	2 - 16	ER 25	160	42		304
63 - 32	2 - 20	ER 32	160	50		306
63 - 40	3 - 26	ER 40	160	63		308

21845

ER collet chucks slim

DIN 69893 A  G 2.5 25000 1/min  HSC



Type
- Clamping nut precision-balanced for HSC
- ER11 through-bore drilled out
- Shank hard surface-turned for quieter operation
- With Balluf chip bore

Use
For clamping tools with straight shank in collets
DIN 6499-shape A and B.

Note:
Collet sets see cat.-no. 21519.
Collets see cat.-no. 21520 - 21525 and 21534 - 21539.
Coolant tube see cat.-no. 21864.
Wrench for coolant tube see cat.-no. 21865.

21845



medium length

HSK - ER	Clamping range mm	Collets type	A mm	D Ø mm	21845	...
63 - 11	1 - 7	ER 11	100	16		101
63 - 16	1 - 10	ER 16	100	22		103
63 - 25	1 - 16	ER 25	100	35		105



long

HSK - ER	Clamping range mm	Collets type	A mm	D Ø mm	21845	...
63 - 11	1 - 7	ER 11	160	16		102
63 - 16	1 - 10	ER 16	160	22		104
63 - 25	1 - 16	ER 25	160	35		106

LARGE SELECTION – EASY SEARCH

Don't forget! CATALOGUE VOLUME [2]
The universal catalogue for tools and machines.

Experience the comprehensive product selection of our quality tools from ATORN

ATORN® Performance requires quality.



Collet chucks

21842

Precision collet



ATORN®

Type

- Ultra-precise, **patented** precision collet with maximum concentricity and repeat precision
- High holding forces
- High rigidity
- Enormously stable
- With large tool aperture

Scope of supply:

Incl. clamping nut.

Use

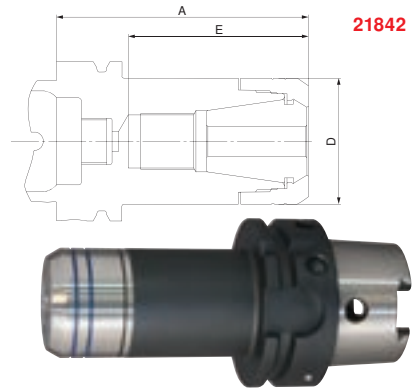
For ultra-precise clamping during roughing and finish-milling, drilling, reaming, countersinking, thread tapping etc.

Warning:

Also suitable for HPC/HSC milling up to approx. 200°C.

Note:

Clamping wrench see cat.-no. 21509.
 GER-HP collets see cat.-no. 21546 - 21551.
 GER-B collets see cat.-no. 21534 - 21539.
 Replacement clamping nut see cat.-no. 21518.



21842

Taper HSK	Clamping range mm	Collets type	Dimension D mm	Dimension A mm	max. insertion depth E without limit stop mm	Suitable clamping nut	Tightening torque of clamping nut Nm	short 21842	...
63	1 - 10	GER 16	30	55	32	AER 16	55		101
63	2 - 20	GER 32	50	70	46	AER 32	55		109



medium length

Taper HSK	Clamping range mm	Collets type	Dimension D mm	Dimension A mm	max. insertion depth E without limit stop mm	Suitable clamping nut	Tightening torque of clamping nut Nm	medium length 21842	...
63	1 - 10	GER 16	30	100	71	AER 16	85		102
63	1 - 16	GER 25	40	100	70	AER 25	85		106
63	2 - 20	GER 32	50	100	71	AER 32	85		110

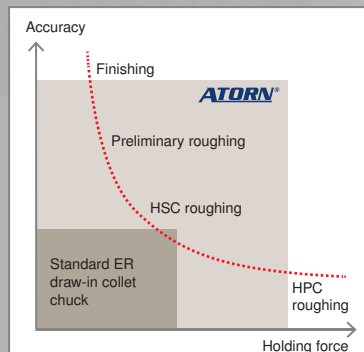


long

Taper HSK	Clamping range mm	Collets Typ	Dimension D mm	Dimension A mm	max. insertion depth E without limit stop mm	Suitable clamping nut	Tightening torque of clamping nut Nm	long 21842	...
63	1 - 10	GER 16	30	160	106	AER 16	140		103
63	1 - 16	GER 25	40	160	128	AER 25	140		107
63	2 - 20	GER 32	50	160	129	AER 32	140		111

The new ATORN precision draw-in collet chuck

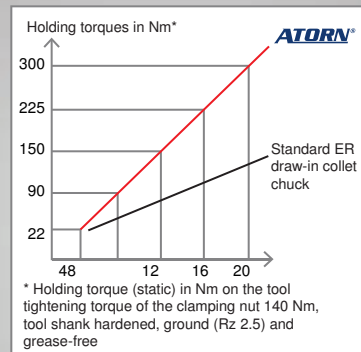
Maximum true running accuracy



= Accuracy

Through unique, patented design features, the ATORN precision draw-in collet chuck offers significantly higher accuracy than is offered by a conventional ER draw-in collet chuck.

Principle-based force development



= Incredible stability

Through the design of the ATORN precision draw-in collet chuck the clamping forces are distributed uniformly over the entire cylindrical lateral surface area of the tool shank. Radial forces are optimally accommodated - perfect surfaces are produced when milling.

ATORN®



21844

Precision collet Centro P Mini and Konisch



Type

- Outer and inner taper ground
- Concentricity and repeat precision 0.003 mm (with GER-HP collets)

- Supply without clamping nut

Use

For high-precision clamping of tools with straight shank, without concentricity and clamping force loss, up to shank tolerance h10.

Note:

Collets with square drive are not suitable for taps.

Clamping nuts and wrench see cat.-no. 21509.

GER-HP/-HPD collets see cat.-no. 21546 up to 21566.

Coolant tube see cat.-no. 21864.

Wrench for coolant tube see cat.-no. 21865.

DIN 69893

A

G 2.5
25000
1/min



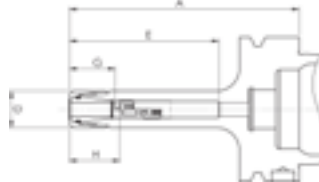
HSC

HPC

21844 101-102

Type

Extremely slim design.



slim

HSK	Clamping range mm	Size	Collets type	Dim. D mm	Dim. A mm	Insertion depth E mm	21844	...
63	1 - 7	CP 11 M	ER 11/4008 E	16	100	68		101
63	1 - 7	CP 11 M	ER 11/4008 E	16	160	135		102

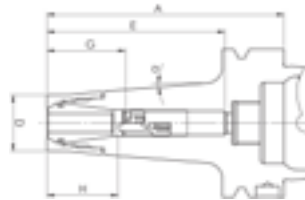
21844 101-102



21844 201-202

Type

Tapered design.



tapered

HSK	Clamping range mm	Size	Collets type	Dim. D mm	Dim. A mm	Insertion depth E mm	21844	...
63	1 - 10	CPC16	ER 16/426 E	24	100	74		201
63	1 - 10	CPC16	ER 16/426 E	24	160	106		202

21844 201-202



21862

Precision collet Centro|P



Type

- Outer and inner taper ground
- Concentricity and repeat precision 0.003 mm (with GER-HP collets)

- Supply without clamping nut.

Use

For high-precision clamping of tools with straight shank, without concentricity and clamping force loss, up to shank tolerance h10.

Note:

Collets with square drive are not suitable for taps.

Clamping nuts and wrench see cat.-no. 21509.

Sealing disc see cat.-no. 21513.

GER-HP/-HPD/-HPDD collets see cat.-no. 21546 - 21569.

Coolant tube see cat.-no. 21864.

Wrench for coolant tube see cat.-no. 21865.

DIN 69893

A

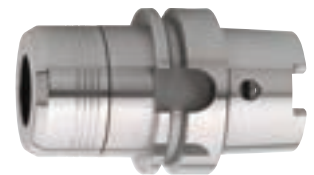
G 2.5
25000
1/min



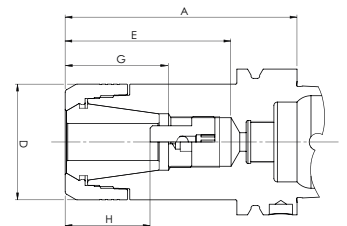
HSC

HPC

21862



HSK	Clamping range mm	Size	Collets type	Dim. D mm	Dim. A mm	Insertion depth E mm	21862	...
63	1 - 10	CP 16	ER 16/426 E	30	100	71		101
63	1 - 10	CP 16	ER 16/426 E	30	160	106		102
63	2 - 16	CP 25	ER 25/430 E	40	100	70		104
63	2 - 16	CP 25	ER 25/430 E	40	160	128		105
63	2 - 20	CP 32	ER 32/470 E	50	70	46		107
63	2 - 20	CP 32	ER 32/470 E	50	100	71		108
63	2 - 20	CP 32	ER 32/470 E	50	160	129		109



21846

Taper sleeves



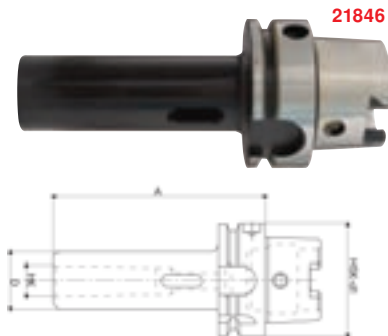
Type
- Precision type.

Use
For mounting tools with MT shank and drive tang.

Note:
Coolant tube see cat.-no. 21864.
Wrench for coolant tube see cat.-no. 21865.

HSK	MT	A mm	D Ø mm	21846	...
63	1	100	25		101
63	2	120	32		102
63	3	140	40		103
63	4	160	48		104

DIN 69893 A G 6.3 15000 1/min $\leq 8\mu\text{m}$



21848

HG collet chucks

Haimer

Type
- High-precision and accurate collet
- Stable clamping
- High concentricity precision

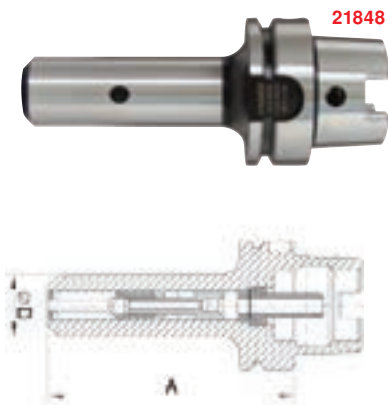
Scope of supply:
Incl. of draw-in screws and extraction hook.

Use
Very suitable for high-speed machining.
For clamping tools with straight shank.

Note:
HG collets, see Cat. No. 21627.
Coolant tube see cat.-no. 21864.
Wrench for coolant tube see cat.-no. 21865.

HSK	Size	A mm	Ø D mm	for clamping Ø mm	21848	...
63	1	120	30	2 / 3 / 4 / 5 / 6 / 8		201
63	2	120	35	10 / 12 / 14		202
63	3	120	48	16 / 18 / 20		203

DIN 69893 A G 6.3 15000 1/min $\leq 3\mu\text{m}$ HSC



DATA MATRIX //DMC ... scan and be done!

■ Select articles

Select your articles from the catalogue in the customary manner, find the associated Data Matrix code in the table.

■ Shopping cart

The data will be automatically transferred into the shopping cart. Close your order by pressing the confirm key.

■ Scan

Scan in the desired article. Entry is confirmed and concluded by the peep tone.

■ OCI / ePos / etc.

Naturally the purchase orders can also be transferred into your OCI-capable enterprise resource planning system. For this additional settings may be required.

■ Interface

Connect the scanner to a computer and the Internet via the provided docking station. Then confirm the webshop access with your password.

■ Curious?

Schedule a meeting with our regional sales manager.



21849

Milling cutter mounts

DIN 69893

A



G 2.5
25000
1/min



Type

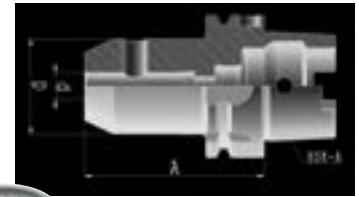
- Precision type.
- Bore tolerance < 0.004 mm
- Precision-balanced G 2.5 - 25,000 rpm
- Coated in stainless material
- With Balluf chip bore

Use

For clamping tools with lateral Driving face in compliance with DIN 1835 B and DIN 6535 HB.

Note:

Coolant tube see cat.-no. 21864.
Wrench for coolant tube see cat.-no. 21865.
Spare screw see cat.-no. 21635.



21849 312

short

HSK	d mm	D mm	A mm	21849	...
63	6	25	65		301
63	8	28	65		304
63	10	35	65		307
63	12	42	80		310
63	14	44	80		312
63	16	48	80		314
63	18	50	80		316
63	20	52	80		318
63	25	63	110		320
63	32	72	110		322
63	40	80	125		324

medium length

HSK	d mm	D mm	A mm	21849	...
63	6	25	100		302
63	8	28	100		305
63	10	35	100		308

long

HSK	d mm	D mm	A mm	21849	...
63	6	25	160		303
63	8	28	160		306
63	10	35	160		309
63	12	42	160		311
63	14	44	160		313
63	16	48	160		315
63	18	50	160		317
63	20	52	160		319

21851

Miller supports with KKB

DIN 69893

A



G 2.5
25000
1/min

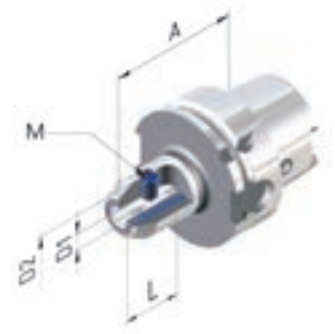


HSC

HPC

Type

- Shank hard surface-turned
- With Balluf chip bore
- With 2 coolant duct bores (KKB)
- With clamping screw and screws for sealing the coolant duct bores (KKB) when required



21851 101-111



short

Taper HSK	D1 mm	A mm	D2 mm	L mm	M	21851	...
63	6	65	25	35	M 6		101
63	8	65	28	35	M 8		102
63	10	65	35	41	M 10		103
63	12	80	42	48	M 12		104
63	14	80	42	48	M 12		105
63	16	80	48	51	M 14		106
63	18	80	48	51	M 14		108
63	20	80	52	53	M 16		109
63	25	110	65	60	M 18 x 2		110
63	32	110	72	64	M 20 x 2		111

long

Taper HSK	D1 mm	A mm	D2 mm	L mm	M	21851	...
63	6	120	25	35	M 6		201
63	8	120	28	35	M 8		202
63	10	120	35	41	M 10		203
63	12	120	42	48	M 12		204
63	14	120	42	48	M 12		205
63	16	120	48	51	M 14		206
63	18	120	48	51	M 14		207
63	20	120	52	53	M 16		208

21851 201-208



Clamping Technology

21850 Milling cutter mounts slim



Type

- Extended, slim type
- Bore tolerance < 0.004 mm
- Shank hard surface-turned for quieter operation
- With ball joint clamping screw for Weldon and Whistle-Notch system
- With Balluf chip bore as standard

Scope of supply:

With through-hole stop screw.

Use

For clamping tools with lateral Driving face in compliance with DIN 1835 B and DIN 6535 HB.

Note:

Coolant tube see cat.-no. 21864.
Wrench for coolant tube see cat.-no. 21865.
Spare screw see cat.-no. 21635.

HSK	D1 mm	A mm	D2 mm	D3 mm	D4 mm	21850	...
63	6	100	13	18	28		101
63	8	100	15	20	30		103
63	10	100	16	21	32		105
63	12	120	17	22	34		107
63	14	120	19	24	36		109
63	16	120	21	26	38		111
63	18	120	23	28	40		113
63	20	120	25	30	42		115



21850



21855 Combination milling cutter arbors



Type

- Precision type.
- Flat-ground supporting surface (precision < 0.003 mm)
- Precision-balanced G 2.5 - 25,000 rpm
- Coated in stainless material
- With Balluf chip bore

Scope of supply:

Incl. of feather key, driving ring and draw-in screw.

Use

With feather key for milling cutters with longitudinal keyway e.g. DIN 841 and driving ring for milling cutters with transverse slot DIN 1880 and milling heads DIN 1830.

Note:

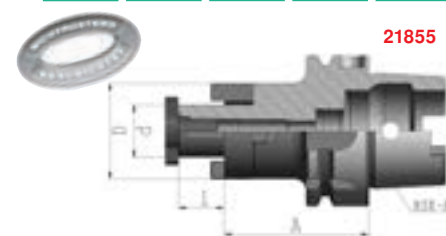
Driver rings, see cat.-no. 21655.
Draw-in screws, see cat.-no. 21656 and 21659.
Draw-in screw wrench, see cat.-no. 21657.
Coolant tube see cat.-no. 21864.
Wrench for coolant tube see cat.-no. 21865.

short

HSK	d mm	D mm	A mm	l mm	21855	...
63	16	32	60	17		201
63	22	40	60	19		203
63	27	48	60	21		205
63	32	58	60	24		207
63	40	70	70	27		209

medium length

HSK	d mm	D mm	A mm	l mm	21855	...
63	16	32	100	17		202
63	22	40	100	19		204
63	27	48	100	21		206
63	32	58	100	24		208
63	40	70	100	27		210



21855



21858 Milling head mounts



Type

- Precision type with enlarged and surface-ground supporting surface
- Brief unload for greater stability
- Precision-balanced G 2.5 - 25,000 rpm
- Coated in stainless material
- With Balluf chip bore

Scope of supply:

Incl. of draw-in screws.

Use

For Shell End Milling Cutters and Milling Cutters with Transverse Keyway.

Note:

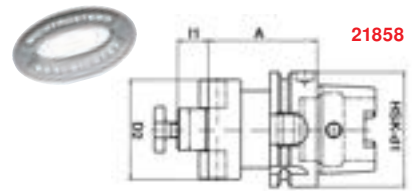
Draw-in bolts see cat.-no. 21656 and 21659. Draw-in screw wrench, see Cat. No. 21657. Coolant tube see cat.-no. 21864. Wrench for coolant tube see cat.-no. 21865.

short

HSK	D1 mm	A mm	D2 mm	l1 mm	21858	...
63	16	50	38	17		201
63	22	50	48	19		203
63	27	60	58	21		205
63	32	60	78	24		207
63	40	60	88	27		209

medium length

HSK	D1 mm	A mm	D2 mm	l1 mm	21858	...
63	16	100	38	17		202
63	22	100	48	19		204
63	27	100	58	21		206
63	32	100	78	24		208



21858



Clamping Technology



21859

Blade head supports with KKB

DIN
69893

A

G 2.5
25000
1/min

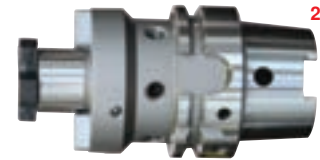
HPC

Type

- Taper shank, locating journal and supporting surface all ground
- Shank hard surface-turned
- With Balluf chip bore
- With coolant duct bores (KKB)

Scope of supply:

With miller draw-in screw.



21859

Taper	D1	A	D2	L1	21859	...
HSK	mm	mm	mm	mm		
63	16	50	38	17		101
63	22	50	48	19		102
63	27	60	60	21		103
63	32	60	78	24		104



21864

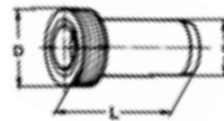
Coolant tube

DIN
69893

H+W

Use

For optimising the central coolant feed of hollow shank tapers in compliance with DIN 69893-HSK-A.



21864

HSK	D	d	L	21864	...
	mm	mm	mm		
63	M18 x 1	12	34.5		104

21865

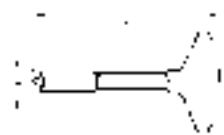
Wrench for coolant tube

DIN
69893

H+W

Use

For coolant tube cat.-no. 21864.



21865

HSK	D	L	21865	...
	mm	mm		
63	16.5	136		104

Info

Multi spindle heads for drilling, tapping, countersinking, reaming, milling, turning etc.

Multi spindle heads with fixed drilling picture for machining centres with or without automatic tool exchange, for using solid carbide tools with a rotational speed of up to 12,000 rpm. With or without coolant feed.



Type SMSK 6/15

with 6 spindles and a maximum drilling capacity of 15 mm per spindle. Spindle head acc. to DIN 55058 for actuator sleeve size 20. Special holder with collet support for high speeds when using solid hard-metal drills and/or VHM tools. Multi spindle head mount ST 50 with gripper lock for machining centres.

Type SMSK 2/15

ST-taper 40 with continuous coolant-feed, tapping chuck with Length compensation in response to compression and tension.



Type SMSK 4/15

With 4 spindles and max. drilling power of 15 mm per spindles and/or tapping power of M 12, spindle head acc. to DIN 55058 for actuator sleeve size 20. Tapping quick-change chuck with tension and compression balancing and spring-mounted countersink sleeve for chamfering the bore. Multi spindle head mount ST 50 with gripper lock for machining centres. Multi spindle head, single adjustable with 2, 3 or 4 spindles available, max. drilling capacity per each spindle, depending on type, from 3 mm up to 32 mm.



Type KE

for easy and quick adjustable handling. Very sturdy construction, large adjusting range, narrow spindle distances, low weight, high service life, also suitable for small series with medium tolerance range. Multi spindle heads with adjustable drilling picture by exchanging spindle mount plate, so called the matrix.



Type KR

with joint spindles of high true-running accuracy and good bearing stability at most narrow spindle distance. Easy reverse of drilling pictures and absolute true size of drilling picture thanks to spindle mount plates (matrixe) which are produced by using coordinate machining system, large adjusting range of single types up to 530 mm, max. drilling capacity up to 40 mm in steel.

Please get in touch with us!

Please include a detailed drawing with measures of the drilling pictures in order to insure a good information.