

TOOLS FOR THREADED FASTENERS FOR TRADE AND INDUSTRY.

Troughout the world, AMF is a hallmark for high-quality screwdriving tools for tradespeople and industry.

Our products prove themselves millions of times every day.

FROM DIN TO COMPANY STANDARDS.

Technical perfection is our standard. The results of this quality: a long working-life, precise transmission of force and thus the greatest possible safety, and user-friendliness in every detail. From socket wrenches to hook wrenches, from pin wrenches to open-ended spanners, from drill drift to fire hydrant key, we have a broad and balanced program of screwdriving tools. Made of alloy steels with appropriate plated finishes for all applications. The following pages will give you an overview of this wide spectrum.

MADE-TO-MEASURE, FROM SMALL TO ENORMOUS.

One of our specialities is the manufacturer of special tools to customers' individual requirements. Special tools can also be made from existing ones but modified to meet your requirements. A drawing or sketch and the quantity required are all the information we need to quote.



APPLICATIONS AND SIZE RANGES HOOK WRENCHES DIN 1810A (CAT.-P. 44)

Size	DIN1804	M	DIN981		KMT	DIN70852	DIN1851-F
	M		KM	KML			
12 - 14	-	-	-	-	-	-	-
16 - 20	6 8	-	-	-	-	10	-
25 - 28	10 12	15 17	2 3	-	0	16	-
30 - 32	14 16	- 20	- 4	-	1	18 20	-
34 - 36	18 20	-	-	-	-	22	-
38 - 45	26	25 30	5 6	-	-	24	10 15
40 - 42	22 24	-	-	-	4	26 28	-
45 - 50	26 28 - 30	30	6	-	-	35	-
52 - 55	32 35	35	7	-	-	-	20
58 - 62	38 40 - 42	40	8	-	-	45	- 25
65 - 70	-	45 50	9 10	-	- 9	48 52	- 32
68 - 75	45 48 - 50	- 55	- 11	-	- 10	50 55	-
80 - 90	52 - 55 58 - 60	60	12	-	- 12	60 70	-
85 - 92	-	65 70	13 14	-	-	65	- 50
95 - 100	62 - 65 68 - 70	-	-	-	13 14	75 80	-
98 - 105	-	75 80	15 16	-	- 15	-	-

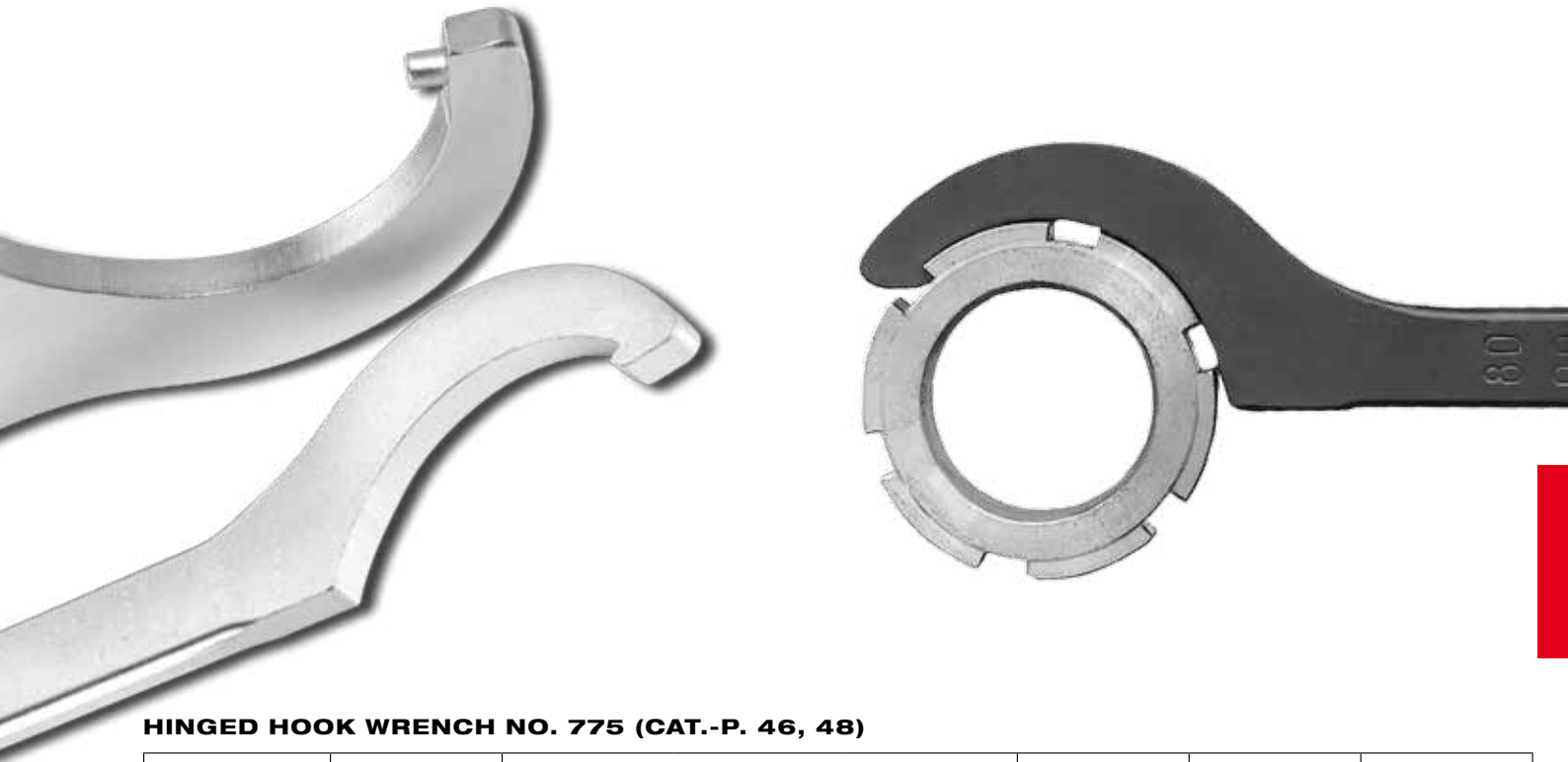
Size	DIN1804	M	DIN981		KMT	DIN70852	DIN1851-F
	M		KM	KML			
110 - 115	72 - 75 80	85	17	-	16	-	65
120 - 130	85 90	90 100	18 20	-	17 19	- 105	-
135 - 145	95 100	110 120	22	- 24	20 22	- 115	-
155 - 165	105 - 110 115 - 120	120 - 130 130 - 140	24 26	26 28	24 26	125 135	-
180 - 195	125 - 130 140	140 - 150 150	28 30	30	- 32	150	-
205 - 220	150 160	- 170 - 190	- 34	- 38	34	175 180	-
230 - 245	170 180	180	36	-	-	190	-

Size	DIN1804	DIN981					
		M	Tr				
260 - 270	190 200	220x4 210x4	3044 42 T	-	-	-	-
280 - 300	-	220x4 240x4	44 T 48 T	-	-	-	-
300 - 320	-	240x4 250x4	48 T 50 T	-	-	-	-
320 - 345	-	250x4	50 T	-	-	-	-
350 - 375	-	-	-	-	-	-	-
380 - 400	-	-	-	-	-	-	-
480 - 500	-	-	-	-	-	-	-

Subject to technical alterations.

ADJUSTABLE HOOK WRENCHES WITH NOSE NO. 771C AND NO. 771MD (CAT.-P. 50)

Size	DIN 1804 M	DIN 981			DIN 11851-F DN
		M	KM	KML	
20 - 42	8 - 24	12 - 25	1 - 5	-	10
45 - 90	26 - 60	30 - 65	6 - 13	-	15 - 50
95 - 165	62 - 120	75 - 140	15 - 26	24 - 28	65 - 100



HINGED HOOK WRENCH NO. 775 (CAT.-P. 46, 48)

Size	DIN 1804 M	M	DIN 981		KMT	DIN 11851-F DN	DIN 70852 M
			KM	KML			
20 - 35	8 - 18	12 - 20	1 - 4	-	0 - 2	-	10 - 20
35 - 60	20 - 38	25 - 40	5 - 8	-	3 - 7	10 - 20	22 - 42
60 - 90	40 - 60	45 - 65	9 - 13	-	8 - 12	25 - 40	42 - 70
90 - 155	58 - 110	70 - 130	14 - 24	24, 26	13 - 24	50 - 100	70 - 125
155 - 230	105 - 170	120 - 190	24 - 36	26 - 38	24 - 38	125 - 150	125 - 190

HOOK WRENCH DIN 1810B AND NO. 776 (CAT.-P. 45, 47, 49, 50)

1810B Size	DIN 1816 M	776 Size	1810B Size	DIN 1816 M	776 Size	1810B Size	DIN 1816 M	776 Size
16 - 18	6	16 - 22	58 - 62	42	60 - 90	135 - 145	95	95 - 155
20 - 22	8	22 - 35	68 - 75	45			100	
25 - 28	10			48			155 - 165	
	12			50		110		
30 - 32	14		80 - 90	52		180 - 195	115	
	16			55			120	
34 - 36	18	95 - 100	58	205 - 220		125		
	20		60			180 - 195	130	
40 - 42	22		62				230 - 245	140
	24		65	150				
45 - 50	26		110 - 115	68	205 - 220	160		
	28			70		230 - 245	170	
	30			72	180			
52 - 55	32	120 - 130	75	260 - 270	180	-		
	35		80		190	-		
58 - 62	38	60 - 90	85		200	-		
	40		90					

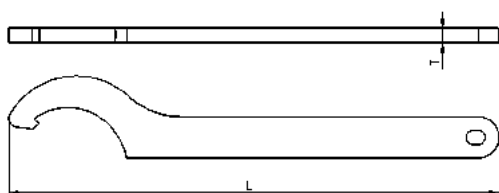
Subject to technical alterations.

DIN 1810A

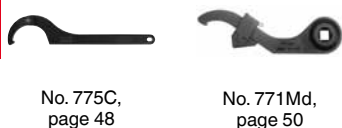
Hook wrench with nose

for grooved nuts to DIN 1804 and bearing nuts to DIN 981.
Special steel, machined nose, edges ground, hardened and blued.

Rounded edges for better handling.



Recommendations



No. 775C,
page 48

No. 771Md,
page 50

Order no.	Size	L	T	Weight [g]
54585	12- 14	110	3	25
54593	16- 20	110	3	25
54601	25- 28	136	4	45
54619	30- 32	136	4	50
54627	34- 36	170	5	90
54387	(38- 45)	170	5	95
54635	40- 42	170	5	90
54643	45- 50	206	6	155
54650	52- 55	206	6	160
54668	58- 62	240	7	260
54403	(65- 70)	240	7	255
54676	68- 75	240	7	255
54684	80- 90	280	8	410
54429	(85- 92)	280	8	410
54692	95-100	280	8	405
54445	(98-105)	290	8	405
54700	110-115	335	10	745
54718	120-130	335	10	720
54726	135-145	385	10*	1000
54734	155-165	385	10*	965
54742	180-195	470	10*	1500
54759	205-220	470	10*	1580
54767	230-245	568	10*	2250
54775	260-270	568	10*	2250
54783	280-300	680	15	5150
54841	300-320	695	15	5100
54791	320-345	695	15	5200
54809	350-375	735	15	5200
54817	380-400	770	15	6700
54825	480-500	988	20	13000

* Thickness not to DIN () DIN extended

On request:

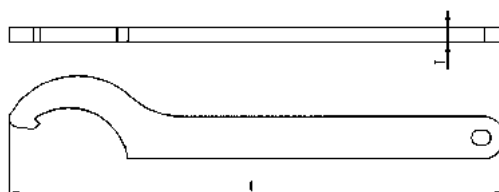
Intermediate sizes and other material thicknesses for quantities above 100 on request. Available in stainless steel on request (up to 6 mm thick).

DIN 1810AD

Hook wrench with nose

for grooved nuts to DIN 1804 and bearing nuts to DIN 981.
Special steel, machined nose, edges ground, hardened and high-grade zinc-plated.

Rounded edges for better handling.



Order no.	Size	L	T	Weight [g]
55103	16- 20	110	3	25
55111	25- 28	136	4	45
55129	30- 32	136	4	50
55137	34- 36	170	5	90
55152	40- 42	170	5	90
55160	45- 50	206	6	155
55178	52- 55	206	6	160
55186	58- 62	240	7	260
55202	68- 75	240	7	255
55210	80- 90	280	8	410
55236	95-100	280	8	405
55251	110-115	335	10	745
55269	120-130	335	10	720
55277	135-145	385	10*	1000
55285	155-165	385	10*	965

* Thickness not to DIN

Recommendations



No. 775NI,
page 48

Subject to technical alterations.

DIN 1810B

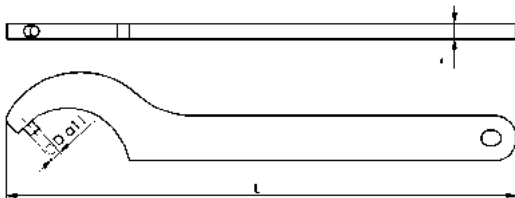
Hook wrench with pin

for nuts with radial holes to DIN 1816.
Special steel, hardened and **blued**.
Rounded edges for better handling.



Order no.	Size	dia. D	L	T	Weight [g]
54874	12- 14	2,0	110	3	25
54882	16- 18	2,5	110	3	25
54890	20- 22	2,5	110	3	25
54908	25- 28	3	136	4	55
54916	30- 32	4	136	4	55
54924	34- 36	4	170	5	100
54932	40- 42	4	170	5	100
54940	45- 50	5	206	6	165
54957	52- 55	5	206	6	165
54965	58- 62	5	240	7	270
54973	68- 75	6	240	7	270
54981	80- 90	6	280	8	410
54999	95-100	8	280	8	410
55004	110-115	8	335	8*	610
55012	120-130	8	335	8*	610
55020	135-145	8	380	8*	790
55038	155-165	8	380	8*	790
55046	180-195	10	470	10*	1500
55053	205-220	10	470	10*	1580
55061	230-245	10	568	10*	2250
55079	260-270	10	568	10*	2250

* Thickness not to DIN (..) similar DIN.



On request:

Intermediate sizes or other pin diameters for quantities above 100 on request. Available in stainless steel on request (up to 6 mm thick).

Recommendations



No. 776C,
page 49

No. 776Md,
page 50

DIN 1810BD

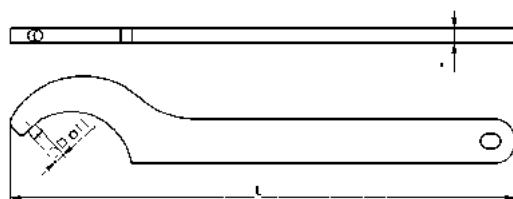
Hook wrench with pin

for nuts with radial holes to DIN 1816.
Special steel, hardened and **high-grade zinc-plated**.
Rounded edges for better handling.



Order no.	Size	dia. D	L	T	Weight [g]
55400	16- 18	2,5	110	3	25
55418	20- 22	2,5	110	3	25
55426	25- 28	3	136	4	55
55434	30- 32	4	136	4	55
55442	34- 36	4	170	5	100
55459	40- 42	4	170	5	100
55467	45- 50	5	206	6	165
55475	52- 55	5	206	6	165
55483	58- 62	5	240	7	270
55491	68- 75	6	240	7	270
55509	80- 90	6	280	8	410
55517	95-100	8	280	8	410
55525	110-115	8	335	8*	630
55533	120-130	8	335	8*	630
55541	135-145	8	380	8*	800
55558	155-165	8	380	8*	800

* Thickness not to DIN



Recommendations



No. 758S,
page 52

ASSEMBLY VERSION

Advantages:

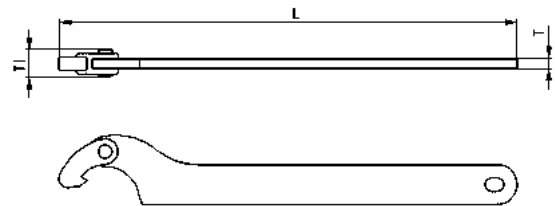
- > **Lightweight** keys, for frequent actuation, reduced fatigue
- > **Short** version, fits into every pocket and toolbox

No. 775SC

Hinged hook wrench with nose, assembly version

for grooved nuts to DIN 1804 and bearing nuts to DIN 981.
Special steel, hardened and **blued**.
Rounded edges for better handling.

Order no.	Size	L	T	T1	Weight [g]
56697	20-35	135	3	8	40
56705	35-60	175	4	11	85
56713	60-90	240	6	13	250
56721	90-155	300	7	15	425
56739	155-230	420	8	18	1015



Recommendations



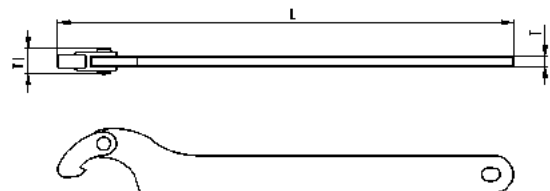
No. 771C,
page 50

No. 775SNI

Hinged hook wrench with nose, assembly version, stainless steel

for grooved nuts to DIN 1804, bearing nuts to DIN 981
and for couplings and fittings to DIN 11851.
Stainless steel.
Rounded edges for better handling.

Order no.	Size	L	T	T1	Weight [g]
56796	20-35	135	3	8	35
56804	35-60	175	4	11	75
56812	60-90	240	5	13	185
56820	90-155	300	6	15	320
56838	155-230	420	8	18	860



Recommendations



No. 771Md,
page 50

Subject to technical alterations.

ASSEMBLY VERSION

Advantages:

- > **Lightweight** keys, for frequent actuation, reduced fatigue
- > **Short** version, fits into every pocket and toolbox
- > All common pin diameters available.

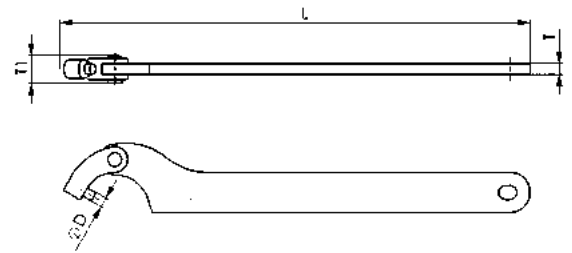
No. 776SC

Hinged hook wrench with pin, assembly version

for nuts with radial holes to DIN 1816.
Special steel, hardened and **blued**.
Rounded edges for better handling.

Order no.	Size	dia. D	L	T	T1	Weight [g]
51821	20-35	2,5*	135	3	8	40
51839	20-35	3,0	135	3	8	40
51847	20-35	4,0	135	3	8	40
51854	35-60	4,0*	175	4	11	85
51862	35-60	5,0	175	4	11	85
51870	60-90	5,0*	245	6	13	250
51888	60-90	6,0	245	6	13	250
51896	90-155	6,0*	300	7	15	425
51904	90-155	8,0	300	7	15	425
51912	155-230	8,0	420	8	18	1015

* If no pin diameter is given in the order, we supply the pin diameter marked with a *.



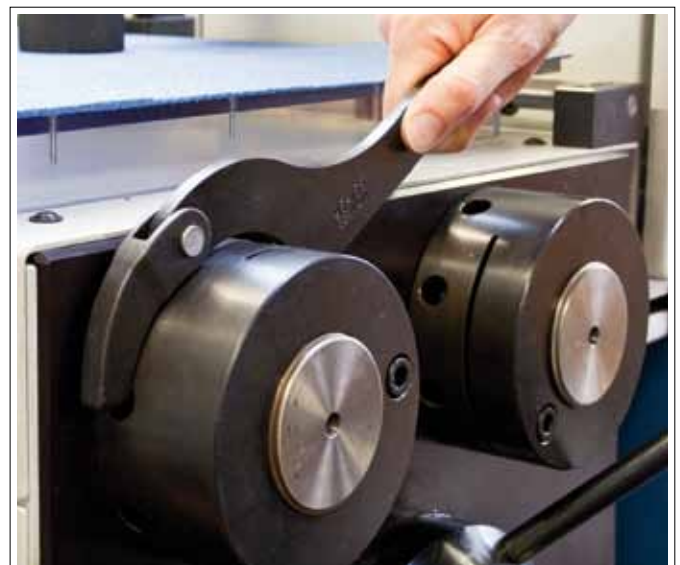
Recommendations



No. 776C,
page 49



No. 776Md,
page 50



Subject to technical alterations.

INDUSTRIAL VERSION

Advantages:

- > Longer shank for increased torque
- > Extended hook for greater contact and safer use
- > Strengthened rivet increases working life and permits transmission of greater forces, especially with smaller sizes
- > Even movement due to additional spring washer, one-handed operation possible

No. 775C

Hinged hook wrench with nose, industrial version

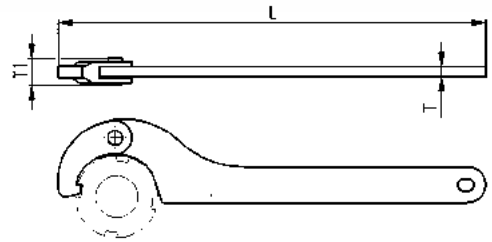
for grooved nuts to DIN 1804 and bearing nuts to DIN 981.

Special steel, hardened and **blued**.

With hole for hanging up. Extended hook and shank, strengthened rivet, spring washer.

Rounded edges for better handling.

Order no.	Size	L	T	T1	Weight [g]
51649	20- 35	165	4	10,5	85
51656	35- 60	210	5	12,5	170
51664	60- 90	280	6	14,5	360
51672	90- 155	335	7	17,5	610
51680	155-230	460	8	17,5	1200



No. 775D

Hinged hook wrench with nose, industrial version

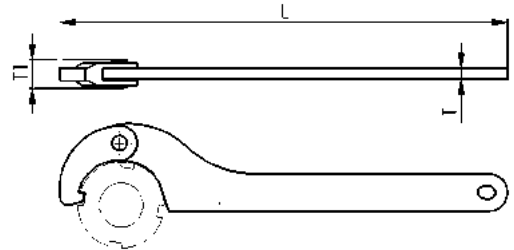
for grooved nuts to DIN 1804 and bearing nuts to DIN 981.

Special steel, edges ground, hardened and **nickel-plated**.

With hole for hanging up. Extended hook and shank, strengthened rivet, spring washer.

Rounded edges for better handling.

Order no.	Size	L	T	T1	Weight [g]
51730	20 - 35	165	4	10,5	85
51748	35 - 60	210	5	12,5	170
51755	60 - 90	280	6	14,5	360
51763	90 -155	335	7	17,5	610
51771	155-230	460	8	17,5	1200



No. 775NI

Hinged hook wrench with nose, industrial version, stainless steel

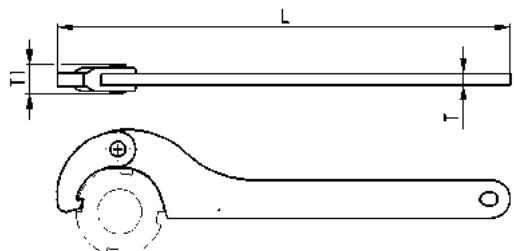
for grooved nuts to DIN 1804, bearing nuts to DIN 981 and for couplings and fittings to DIN 11851.

Stainless steel. With hole for hanging up.

Extended hook and shank, strengthened rivet, spring washer.

Rounded edges for better handling.

Order no.	Size	L	T	T1	Weight [g]
52183	20- 35	165	4	10,5	85
52191	35- 60	210	5	12,5	170
52209	60- 90	280	6	14,5	360
52217	90- 155	335	6	17,5	580
52225	155-230	460	8	17,5	1200



Subject to technical alterations.

INDUSTRIAL VERSION

Advantages:

- > Longer shank for increased torque
- > Extended hook for greater contact and safer use
- > Strengthened rivet increases working life and permits transmission of greater forces, especially with smaller sizes
- > Even movement due to additional spring washer, one-handed operation possible
- > Improved ratio of pin diameter to nut diameters

No. 776C

Hinged hook wrench with pin, industrial version

for nuts with radial holes to DIN 1816.

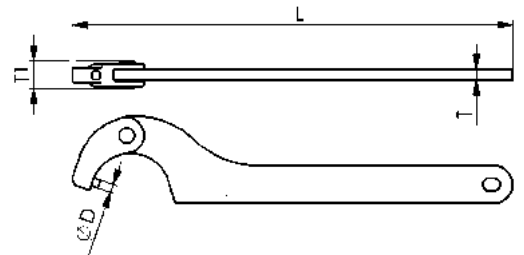
Special steel, hardened and **blued**.

With hole for hanging up. Extended hook and shank, strengthened rivet, spring washer and optimised radial areas.

Rounded edges for better handling.

Order no.	Size	dia. D	L	T	T1	Weight [g]
53058	16-22	2,5	135	3	7,5	50
53066	22-35	3,0	165	4	10,5	85
53074	35-60	4,0	205	5	12,5	170
53181	60-90	5,0*	280	6	14,5	380
53082	60-90	6,0	280	6	14,5	380
53090	95-155	6,0*	335	7	17,5	610
53199	95-155	8,0	335	7	17,5	610
53173	165-230	8,0	460	8	17,5	1200
53108	165-230	10,0*	460	8	17,5	1200

* If no pin diameter is given in the order, we supply the pin diameter marked with a *.
 Sizes 16-22 without retaining ring.



Recommendations



No. 776Md,
page 50



DIN 1810B,
page 45

No. 776D

Hinged hook wrench with pin, industrial version

for grooved nuts to DIN 1816.

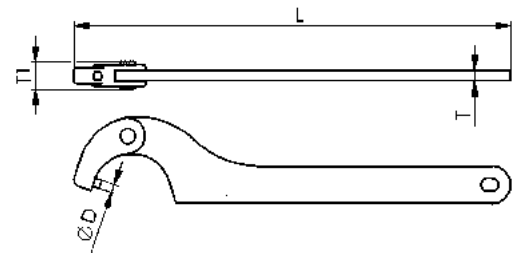
Special steel, hardened and **nickel-plated**. With hole for hanging up.

Extended hook and shank, strengthened rivet, spring washer and optimised radial areas.

Rounded edges for better handling.

Order no.	Size	dia. D	L	T	T1	Weight [g]
53116	16-22	2,5	135	3	7,5	50
53124	22-35	3,0	165	4	10,5	85
53132	35-60	4,0	205	5	12,5	170
53140	60-90	6,0	280	6	14,5	380
53157	95-155	6,0	335	7	17,5	610
53165	165-230	10,0	460	8	17,5	1200

Sizes 16-22 without retaining ring.



Recommendations



DIN 1810BD,
page 45



No. 250,
page 57

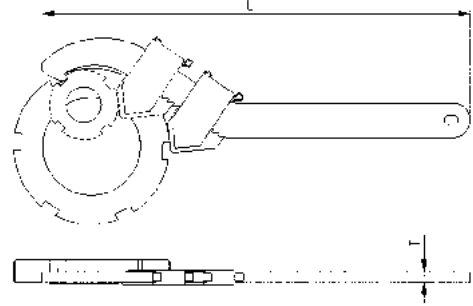
No. 771C

Adjustable hook wrench with nose

for grooved nuts to DIN 1804 and bearing nuts to DIN 981.
Special steel, hardened and **blued**.
Rounded edges for better handling.



Order no.	Size	L	T	Weight [g]
51201	20 - 42	180	4	100
51219	45 - 90	250	6	250
51227	95 - 165	335	10	710



No. 771Md

Adjustable hook wrench with nose and torque wrench socket

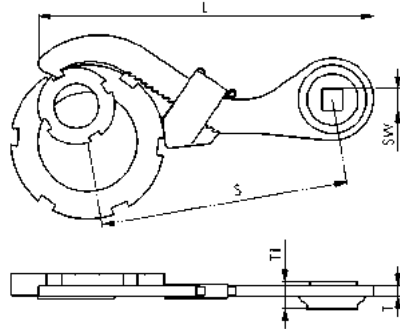
for grooved nuts to DIN 1804 and bearing nuts to DIN 981.
Special steel, hardened and **blued**.
Drive: square socket



Order no.	Size	Drive SW [Zoll]	L	S	T	T1	Weight [g]
51516	20 - 42	1/2	135	100	4	16,0	165
51532	45 - 90	1/2	192	150	6	16,0	310
51557	95 - 165	3/4	298	220	10	20,5	910

Note:

The set value for the torque wrench is dependant on insertion dimension „S“.
The operating manual provided with your torque wrench contains the requisite information and calculation formulae.



No. 776Md

Hinged hook wrench with pin and torque wrench socket

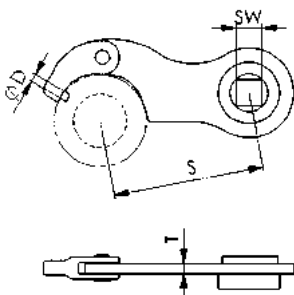
For nuts with radial holes to DIN 1816.
Special steel, hardened and **blued**.
Drive: square socket



Order no.	Size	Drive SW [Zoll]	dia. D	S	T	Weight [g]
52753	35-60	1/2	4	75	5	185
52761	60-90	1/2	6	100	6	320

Note:

The set value for the torque wrench is dependant on insertion dimension „S“.
The operating manual provided with your torque wrench contains the requisite information and calculation formulae.



Recommendations



No. 771Md,
page 50



No. 902Md,
page 58



No. 250Md,
page 58



Subject to technical alterations.